



# Rector on House for Duty terms

## The Dever Benefice

In the deanery of Winchester



# INDEX

Page	Title
3-4	Welcome
5-7	Introduction
8	Our Vision
9-13	Our Church Life
14-16	Our Team
17-18	Our Organisation
19	The House
20-21	Role Description
22	Appendix



## WELCOME

Welcome to this benefice profile and role description ... and welcome to the Diocese of Winchester!

At the heart of our life here is a desire to be always Living the Mission of Jesus. We are engaged in a strategic process to deliver a mission-shaped Diocese, in which parochial, pastoral, and new forms of pioneering and radical ministry all flourish. Infused with God's missionary Spirit we want three character traits to be clearly visible in how we live:

- ✦ Passionate personal spirituality
- ✦ Pioneering faith communities
- ✦ Prophetic global citizens

We pray that, if God is calling you to join us in his mission in this part of the world, he will make his will abundantly clear to you.

*'As the Father sent me so I send you ... Receive the Spirit.'* John 20:21

Read more about [Winchester Mission Action Planning](#) here.



David Williams  
Bishop of Basingstoke



# WINCHESTER DEANERY

Welcome to Winchester Deanery. Centred on an historic cathedral and University City, this is a diverse and lively Deanery that has communities ranging from rural hamlets to urban post-war estates and new developments. We are passionate about living the mission of Jesus and engaging effectively with people of all ages and backgrounds. To do this our Deanery Mission Action Plan focusses on the Diocesan strategic priorities of growth and reimagining the church, and we work together so that resources can be shared, and all forms of authorised ministry are valued and nurtured. If God is calling you to live and work here, we look forward to welcoming you, and in the meantime please be assured of our prayers for this time of discernment.



Karen Kousseff  
Area Dean



Philip Krinks  
Assistant Area Dean



Ruth Guy  
Lay Chair



# INTRODUCTION

The Dever Benefice will be a new Benefice, covering the villages of:

- East Stratton;
- Hunton;
- Micheldever;
- Micheldever Station;
- South Wonston;
- Stoke Charity;
- Sutton Scotney;
- Woodmancott;
- Wonston.

The benefice will be formed by the Parish of South Wonston joining what was formerly the Upper Dever Benefice.



The role is offered on a House for Duty basis with the incumbent devoting 2.5 days to the work of the benefice.

This is an opportunity to lead the people of a largely rural benefice (with some larger villages) in the next stages of their Christian journey.

As a Benefice, we are committed to working more closely together. The team of churchwardens (which are a younger group than most), not only serve their own communities, but also support each other and the Dever Benefice as a whole. A number of churchwardens, along with others, form part of what is a well-established and respected Lay Leader team and it is here that we support each other's churches, practically, across the Dever – by leading Mattins and Evensong, Café Church and family services. For some churches, this is a recent development.

The new Benefice consists of 6 rural parishes (including 2 larger villages) and 7 churches to the north of Winchester – one of the churches was built in the last 25 years, shares a site and facilities with the village primary school. It contrasts sharply with the other churches which are many centuries old.

The benefice Rector will:

- lead the clergy and lay team;
- develop the vision for the benefice; and
- have a day-to-day ministry focus on the residents of the beautiful Hampshire villages that are within the Benefice boundary.
- manage and work with the Parish Coordinator, who provides secretarial and administrative support for 10 hours per week.

There are 2 primary schools in the Benefice, one of which is a CofE primary school with a committed Christian head teacher. In addition, there are 3 nurseries for preschool children. There is also a nursing home providing care for our aging population when it is needed. Village Halls, a Doctors' surgery, 2 village shops and a post office, along with several pubs and a petrol station mean that we are well provided for in every way! The City of Winchester is in easy reach, just a few miles to the south, and Basingstoke is also within easy reach. Both have an abundance of attractions. As you can see from the map, transport links by road and rail are easily accessed, meaning people can get to the Dever Benefice from all parts of the country.

It is impossible to escape the charms of the countryside and nature in this lovely part of Hampshire, whether driving through, following the river Dever, walking footpaths or cycling along its lanes.

Our communities are changing and changing fast. The days where our villages were dominated by the retired or elderly are going; our demographic is mixed, with new neighbours likely to be younger professionals with and without children. This diversity gives us a richness, where talent and experience are matched by dedication and commitment, but where new forms of engagement need to be found.



As a family, we also know that there are people that we have yet to reach. There are two significant population centres that continue to grow but where there is no provision for regular worship and little participation in their parish churches. Sutton Scotney, part of the Wonston Parish and Micheldever Station, part of the Micheldever Parish offer us the opportunity to share the Christian message to whole new communities, where a re-imagining of mission has the potential to change lives.

As our Rector you and your family will be loved. We fully recognise that the fashioning of our new Benefice means that the day to day practicalities will be different and that our relationship with you, other supporting clergy and the lay leadership team will develop, but this excites us.



# OUR VISION & PRIORITIES

Our vision is to:

- Help more people to know Jesus;
- Deepen our knowledge of, and relationship with, God and develop authentic discipleship;
- Increase the number and variety of authorised ministries in the Benefice;
- Provide opportunities for everyone in our villages to get involved in building a stronger and more Christ-like community.

Our priorities are to:

- Re-imagine church, with a focus on families and young people. We will re-ignite the work we were doing before the Pandemic (regular family services; tea-time service) as well as look for new expressions and opportunities to make the church relevant and exciting to those who currently have no connection or commitment;
- Find ways to engage with those who do not know Jesus, to talk about and explore matters of faith and unbelief;
- Create strong church-based networks to provide pastoral support for those who are lonely or need support in a time of crisis;
- Continue to honour and support existing models of churchmanship;
- Have prayer as the crucial underpinning of all we do.





## OUR CHURCH LIFE

The Benefice combines both traditional and more modern forms of worship. There are some who value and enjoy BCP forms of service and we honour this. There is also a desire in our church to attract new people to know Jesus and our regular pattern of worship includes informal, family-focused and contemporary worship.

We have grown a church life beyond Sundays which can be seen in the growth of well-attended projects such as:

- The Alpha Course;
- Men's breakfasts;
- The Prayer Course;
- Mid-week Bible study groups.

We have a dedicated and experienced group of lay leaders and musicians who are core to the work of the Benefice, alongside our ordained clergy. A group of 10 lay leaders meet on Zoom every Monday evening to pray for mission and growth in the benefice.

### East Stratton (All Saints)

All Saints Parish Church sits at the heart of the community of East Stratton. The church itself, which has recently benefited from some substantial investment, is loved by the people in the village who support it brilliantly with time and money, no more so than with the Church Fete. With two regular services a month, the average size of our committed congregation is small, but starting to show signs of growth. Annual events such as Easter, Harvest, Christmas and Remembrance Sunday are very well attended. We are a collegiate church and have recently started to work with St Marys' Micheldever, who support our Holy Communion Service with a choir.

As a church community, we want to re-establish the Christian message of hospitality, charity and friendship, practically, through the villages of East and West Stratton. Our short-term aim is to establish a visiting group, offering company and support to those who are ill, lonely or housebound and further down the line, to employ a parish nurse to support villagers with immediate, regular and familiar health care.





## Micheldever (St Mary the Virgin)

St Mary's church, Micheldever, positioned in the centre of the village, consists of an attractive stone tower, built in 1544 and an unusual Victorian octagonal nave and chancel.

St Mary's has a seating capacity for 150 in traditional wooden pews. There is a kitchenette, bio-toilet, audio visual system, an excellent organ (refurbished in 2005) and a piano. The octagonal nave has good acoustics and is an excellent environment for musical events and dramatic performances. A local choir, the Dever Singers, holds 2 concerts a year in St Mary's and occasional small concerts and plays have been performed.

St Mary's offers 3 services a month in a mix of traditional and contemporary worship. Before the pandemic there was a monthly informal service called Café Church with bacon baps, croissants, cake and coffee served from 10am, followed by a short informal service at 11am. This was very popular with between 20 and 30 attendees. It is hoped that Café Church will be able to recommence in 2022. 'Kids Church' services have been trialed. Church attendances each Sunday are around 10 to 20 with some services attracting more and some less. High days and holidays are very well supported.

The Church sponsors a monthly Lunch Club for the older generation for a nominal charge. This is very popular and is an excellent way for the church to be seen to be doing something positive in the community. In addition, the Church under the banner of The Friends of St Mary's, sponsors coffee mornings which are well supported. An annual fete in July is a great community event, very well supported, and an important source of revenue for the church.

The village has a vibrant pub where carol singing was held last year. The Primary School has a strong link with the Church and regularly use the building. The church is keen to build on its relationship with the school with a view to increasing attendance at Family Services.

Pastoral care in the community is important and we are keen to set up a Pastoral Support Group within the village. One of our church members has recently completed training to become a Bereavement Support Visitor and it is hoped that others will be interested in joining a team of bereavement/pastoral support visitors.

## Stoke Charity (St Mary & St Michael) with Hunton (St James)

The two churches in Stoke Charity and Hunton offer a mix of BCP services (much enjoyed by the long-term congregation who generously fund the majority of our activities) and informal contemporary worship designed for those less familiar with church.

The active lay leadership team is involved in running the benefice Zoom study groups and online midweek courses....currently 'The Bible Course'. These aim to bring those on the edges of church life into a full relationship with Jesus Christ.

Family Services have resumed since lockdown and the number of children attending is beginning to grow again.

We have two beautiful, old buildings which though lacking facilities are very well cared for and supported by the local communities around them, who enjoy our regular village events.

## South Wonston (St Margaret's)

As we join with the six other Dever Valley parishes to make a new Benefice, St Margaret's is ready to face the future and embrace a shared vision with our new partner churches.

The church in South Wonston is very much the youngest in the Dever Benefice as the village itself has only existed for around 120 years. Our church is at the heart of South Wonston, both geographically and by its unique relationship with the County primary school to which it is attached and with which it shares facilities. We have a good working relationship with the school overuse of, and care for, the shared spaces. The headteacher has welcomed our offer of help with assemblies and RE, and this is something we would like to pursue in the future.

The Church is welcoming, light and comfortable, with a respectful feeling for worship and prayer. We benefit from excellent modern amenities thanks to the shared arrangement with the school. The open, airy space lends itself well to all types of service as well as social events.

The modern building has had a positive effect on the life of the church in South Wonston. We are modern in our worship, our services and our outlook. We have an ageing but loyal congregation who all play an active part in church life and are generous with their time, talents and gifts. Five of us regularly lead services. We hope that in the future we will be able to attract some of the younger families in the village to St Margaret's by offering a mix



of more informal/all age services and discipleship courses, and we have had some success with this in the last few months. We regularly offer Holy Communion, Morning Prayer and Praise services using Common Worship, as well as a mid-week Compline service on Zoom.

St Margaret's has always had a ministry of compassion for the elderly and the lonely in South Wonston and we are committed to preserving this. Going forward, our prayer is that we can grow closer to the hearts of more village residents, and also play an active part in the life of our new combined Dever Benefice.

There are 5 lay leaders who have many years of experience in running a variety of services.

### Wonston (Holy Trinity)



Wonston Parish is centred around Holy Trinity Church and encompasses the rural villages of Sutton Scotney, Wonston and part of Norton. The church and its peaceful churchyard are well cared for by our parishioners, and visited frequently by those tending graves, walking dogs or enjoying the countryside. We are lucky to have an experienced team of bell ringers who aim to return to their practice of ringing before most Sunday services, and for Weddings when requested.

The parish community is geographically divided into the villages of Wonston and Sutton Scotney, where there has been a significant increase in housing in the last decade and where most local amenities are situated, including the village shop, village hall, pub, surgery and community sports field. We are actively embracing the challenge and opportunity of working to blur the subconscious boundaries between the two villages, which may inhibit some from joining us in worship. We look forward to restarting the monthly family service in the Village Hall which though in its infancy as the pandemic started, was proving a popular alternative to our church-based services

We have a committed core of regular worshippers, loyal to the BCP form of service, but there is growing interest in our more informal monthly Family service. There is great support from the wider community at the principal festivals of Christmas, Easter, Remembrance and harvest. We are mindful that while the current balance of services is valued, we would like to broaden our appeal to welcome and encourage new members, to bring increased strength and vigour to the church. We look forward to working with a new priest in charge and with the inspiring lay team across the Benefice in order to build on this and take forward our objectives.

We consider that the pastoral care of those in need of support is an important aspect of ministry, which benefits hugely from clergy presence in the community, but to which a growing number of parishioners are regularly contributing.

One of the highlights of our year is the Church fete, which is a celebration of community teamwork, and raises funds for the church. This is a very public way in which the parish church and wider community come together. We have also been running a monthly coffee morning in Sutton Scotney's Victoria Hall, where we aim to reach out to the local community, develop relationships and grow in strength.

### Woodmancote with Popham (St James)

St James is a small rural church but draws its congregation from a wide area. Popham and Woodmancote are both hamlets surrounded by farms and woodland with cars whizzing past on the M3 and the A33, but no pub, shop, school or village hall within the parish, so the church is the central hub for the whole community.

The church celebrates the agricultural year with Plough Service, Rogation Walk and a Harvest Festival service followed by a harvest lunch. We also have a Patronal Festival, Mothering Sunday, All Souls and Carol services. All of these special services draw in people from other Upper Dever parishes too. The Rogation Walk with its legendary tea en route is especially well loved. Generally, there are one or two services a month, Evensong (first Sunday) and Holy Communion (third Sunday).

We have a telephone kiosk, which is used as a "church space", open when the church is not. We are conscious that many people walk and cycle past the church, and we see the telephone kiosk as a way to give a flavour of what our church is like and what goes on there.

Our emphasis is on hospitality to draw people into the church and services always conclude with refreshments. We maintain contact with many who have moved away from our little parish but still like to hear news from St James and return occasionally to worship here.

There is a strong informal support system in the community to ensure that those who need help/visits/transport etc receive it.

Our aim is to engage more with younger families. Though most have outgrown the family sports day we used to run, we are trying to find a way to maintain a church connection with the teenagers. We aim to make use of social media, to connect with people who would enjoy the rural and traditional aspect of our pretty country church.



## OURTEAM

We have one SSM, Rev Robert Rees who will be ordained priest in the summer of 2022. We also have a dedicated and very hard-working team of lay leaders and churchwardens, as well as active PCCs. Many of our services are lay led and our lay people also run small groups and courses across the Benefice.

We are given considerable support on Sundays from retired clergy (Rev Neil Britton), as well as a lay reader (Peter Russell) who supports us from Christ Church Winchester.

Juliet Pattinson provides bereavement visitor support in the Micheldever area.

### **Revd Robert Rees – Assistant Curate, Self-Supporting Minister**

I was ordained deacon in July 2021 and will be ordained priest in July this year and I am serving my curacy in the Upper Dever Benefice. I have a focal ministry for the churches and communities of Micheldever and East Stratton, although I lead services and occasional offices at the other churches (I live in Micheldever and previously lived in East Stratton). I am an Honorary Chaplain at Winchester Hospital, covering a half-shift per week and I have recently been appointed by the Acting Bishop of Winchester as an Assistant Diocesan Director of Ordinands – with a focus on further and higher education chaplaincy and rural ministry.

Before ordination, I had the privilege of being part of the benefice lay leadership team with Ruth, Roland and Campbell and I was also Churchwarden at All Saints' East Stratton

Outside of church life I jointly own an educational consultancy with offices in Winchester and London and I have had, and continue to have, a successful career as a senior manager in the further and higher education sectors.

My time 'in parish' currently consists of up to three Sundays plus three other days per month. However, I am highly flexible, balancing the work/parish diary during the week as the need (especially for occasional offices) demands.

## **Campbell Dye**

By day, I am a partner in a large international law firm and am married to Rachel, a teacher of year 4. We have 3 children – Eleanor, a Daily Mail Journalist, Robert who is studying history at St Andrews and Rosalind who is completing her A levels this summer. I grew up in a Christian family, but my faith has become ever more important as I have matured. I have been a churchwarden at Stoke Charity with Hunton for over 20 years. I lead family and traditional services in Stoke Charity, Hunton and Wonston but am happy to help wherever I can. I am passionate about apologetics and authentic Bible-based teaching. I have been in a rock band with a former Moderator of the Church of Scotland for more decades than I care to remember so I love strumming my guitar to lead worship – combining Delirious with the Book of Common Prayer seems to go down surprisingly well with our folk!

## **Roland Guy**

I am a Consultant Physician, working part time and hold a Bishops Commission for Worship, taking regular services.

I was involved with Christian Unions at university and medical school, undertook missions with YWAM, helped with Crusader groups, Alpha courses and with my wife I lead family houseparties. I was a founding trustee of the Warham Trust, a charity aiming to bring renewal to local rural churches.

## **Ruth Guy**

Brought up in a strong Christian home and a nurse by career, I love teaching and helping people to know Jesus Christ better.

I'm a Church Warden and Lay Chair of the Deanery, but informal things are much more my scene.

I run small groups during the week and enjoy planning and speaking both at small rural church services and at large New Wine seminars.

I'm a worship leader, happy to sing and play the keyboard at informal services and the organ at formal weddings.

Twice a year I organise a large Christian event for Hampshire women.

I'm wonderfully supported by a doctor husband and together we run Stewards' Trust houseparties.

## **Sarah Hobhouse**

I am a retired GP, living in Norton, part of which is in the Wonston parish, where I am the churchwarden.

## **Melinda Samms**

I have been a member of the church in South Wonston for about 20 years where I have found spiritual support, and also the joy of a church family. Over the years I have got involved in various roles - reading, prayers, Sunday school teaching and PCC. Five years ago I completed the BCM Worship program run by Winchester Diocese School of Mission; this coincided with a scaling back of my working life to a part-time WFH position which has allowed me to give more time to my various church roles. I am one of two churchwardens at St Margaret's, as well as PCC secretary and part of the lay worship team of five.

Between us we have covered morning prayer and praise services in South Wonston twice a month for some years, and I have done so at other churches on occasion. Three of the other team members have recently completed BCM Worship too, and along with a wider group of church volunteers, we all regularly support clergy-led services.



# OUR ORGANISATION

## Governance

Each of the parishes has its own PCC which each meet at least three times a year.

Each PCC has the responsibility of co-operating with the incumbent and ministry team in promoting the whole mission of the Church, pastoral, evangelistic, social and ecumenical. They endeavour to join and liaise with the other churches in the deanery in the pursuance of these objectives. Each PCC has maintenance responsibilities for the church fabric and churchyard.



## Church Activity

Parish	Electoral roll	Worshipping Community	Baptisms average/yr	Weddings average/yr	Funerals average/yr
S Wonston	55	28	1	0	0
Wonston	55	41	3	4	4
Stoke Charity w Hunton	50	25	2	2	1
Micheldever	43	23	2	1	3
East Stratton	22	17	2	1	2
Woodmancott	39	12	1	0	1

## Finances

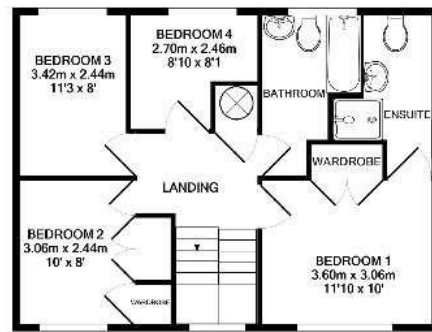
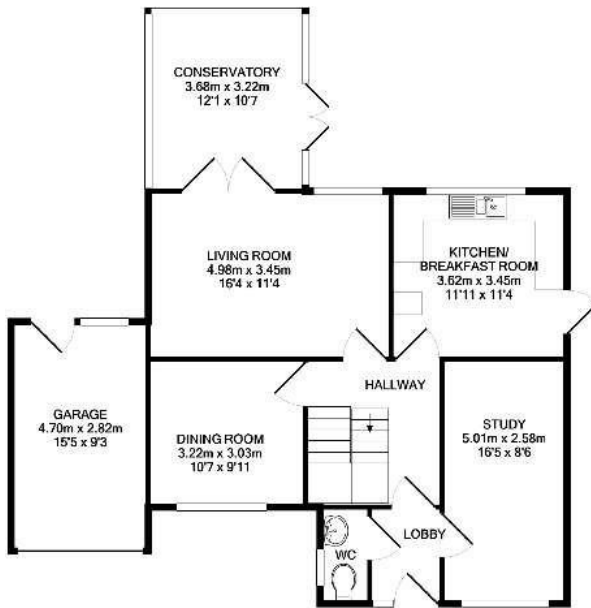
Each of the parishes has its own PCC and manages its own financial affairs.

The table below summarises the financial situation of each parish:

	Financial Metrics from last accounts	Money held on deposit or invested	Parish Giving Scheme (no. of givers)	Parish Share Met?	Known future capital commitments
<b>East Stratton</b>	Income: £12,549.21 Expenditure: £13,395.83 Surplus/Deficit: -£846.62 NatWest and CCLA accounts: £53,005.01	Unrestricted £19,293.20 Designated: £486.64 Restricted: <ul style="list-style-type: none"> <li>• Churchyard maintenance £1,250.00</li> <li>• Fixtures &amp; fittings £854.00</li> <li>• Restoration &amp; major repairs £2,488.00</li> <li>• Quinquennial capital fund £25,653.17</li> <li>• Friends of All Saints (2017-2020) £2,980.00</li> </ul>		£6,538	
<b>Micheldever 31/12/20</b>	General Fund Income: £24,604 Expenditure: £22,738 Surplus/Deficit: £1,866  Total Funds Income: £43,318 Expenditure: £26,665 Surplus/Deficit: £16,653	Deposit accounts : 36K Investments : 20K	PGS : 9 Standing orders : 32	Not fully met. Paid £13,608	No firm commitments
<b>South Wonston</b>	Income: £26,125 Expenditure: £26,419 Surplus/Deficit: -£294	Unrestricted £3,592 Restricted: £37,271	25 (PGS plus BACS)	£23,668 No £16,200 paid	None
<b>Stoke Charity with Hunton</b>	Income: £24,023 Expenditure: £22,860 Surplus/Deficit: £1,183	Bank Current Account: £63,187 CBF Deposit Fund: £20,181	Yes currently 11	£14,919 Met in full	No major works planned. General care and maintenance as identified in the Quinquennial Report – all work is already funded.
<b>Wonston</b>	Income: £41,118 Expenditure: £30,037 Surplus/Deficit: £11,081	Current account £23117 Deposit £48323	Yes currently 14	£16,249 met in full	Church floorboards as per quinquennial inspection, plus Lychgate repairs, church drive repairs.
<b>Woodmancott with Popham</b>	Income: £9,530 Expenditure: £12,180 Surplus/Deficit: -£2,450	£10,650	Yes	£7,067	
				TOTAL: £74,581	

# THE HOUSE

A traditionally constructed 4 bedroom property. The property comprises of entrance hall, this leads to the study, cloakroom, kitchen, lounge and dining room. At the rear of the property, a large conservatory can be accessed from the lounge. On the first floor are 4 bedrooms and a family bathroom. The large master bedroom benefits from an ensuite. The property also has a garage with external vehicle charging point. The rear garden is mature with minimal planting, parking is located to the front of the property.



TOTAL APPROX. FLOOR AREA 146.6 SQ.M. (1578 SQ.FT.)  
Whilst every attempt has been made to ensure the accuracy of the floor plans contained here, measurements of doors, windows, rooms and/or other areas are approximate and it is not responsible to be taken for any error, omission, or misstatement. This plan is for illustrative purposes only and should be used as such by any prospective purchaser. The services, systems and appliances shown here have not been tested and no guarantee as to their availability or efficiency can be given.  
Made with: Matplan ©2022



## ROLE DESCRIPTION

This Role Description should be read in conjunction with the vision, aims and priorities set out in this profile. The role is for a priest who will lead, support and nurture the inhabitants of these diverse parishes and build on recent achievements to develop the mission of the Church in the community and ensure pastoral needs are met. It is for an experienced leader who will carry significant oversight and strategic development responsibilities. As our Rector we are seeking someone who:

### Spirituality

- Follows an ordered personal, spiritual life of daily prayer and Bible study and shares the fruits of their own discipleship with others.
- Seeks to follow the model given us by Jesus Christ of active ministry and time out for reflection and prayer in quiet days and retreats.
- Balances time with family and friends with the demands of parish life.

### Worship and Preaching

- Is comfortable leading and participating in the current diversity of our parish services, and will enrich them.
- Supports and encourages a Bible-based ministry, including that of lay people in leading services.
- In preaching and other communication, presents and interprets the Christian message in authentic, orthodox, relevant and inspiring ways that encourage us to live and witness as Christians in the 21st century.

### Leadership and Collaboration

- Is a servant leader and proven team player, committed to working collaboratively with the various parishes, and can lead or be a team member, as appropriate.
- Is an effective delegator and decision maker, able to manage their workload and capable under pressure.
- Is a capable chair of meetings who will ensure that voices are heard and valued and also clear decisions are reached and implemented.



#### Discipleship, Learning and Nurture

- Is open and creative in their approach to Christian discipleship and spiritual growth, strongly committed to seeing God's people grow and mature in faith and use their gifts in God's service.
- Will actively encourage our home groups and others in their discipleship.
- Is prepared to lead or co-lead discipleship, nurture courses and is committed to the growth of small groups.

#### Evangelism and engagement with social justice

- Is proactive and persuasive in sharing their faith with others and can enable others to gain confidence to do the same.
- Understands the imperative and breadth of parish outreach and mission, and will work and encourage others in mission, fair trade and outreach activities.
- Is experienced in working with schools and is committed to further develop our relationships with local schools and with young people beyond schools.

#### Pastoral Care

- Is approachable and sensitive to varied pastoral needs of our church family and wider community and willing to share pastoral care with our team of lay pastors.

#### Stewardship and Parish Organisation

- Exhibits and proactively encourages generosity in the discipleship of church members, in the giving of their time, talents and money.
- Brings and displays the proven ability to plan, organise, manage, chair meetings and communicate effectively with the clergy team, Churchwardens and Parish Office.

The role description should always be read in conjunction with the [Guidelines for the Professional Conduct of the Clergy](#).

## HOW TO APPLY



A full application pack, along with Terms & Conditions, is available from the Diocesan website, [here](#).

For an informal conversation about vacancies in the Winchester Archdeaconry please contact:

The Right Reverend David Williams  
Bishop of Basingstoke 01962 737330  
[bishop.david@winchester.anglican.org](mailto:bishop.david@winchester.anglican.org)

Jane Hammond  
Clergy Appointments Assistant  
[clergy.appointments@winchester.anglican.org](mailto:clergy.appointments@winchester.anglican.org)

# Appendix

## Sample Pattern of services

	East Stratton	Hunton	Micheldever	South Wonston	Stoke Charity	Wonston	Woodmancote
<b>1<sup>st</sup> Sunday</b>			6pm Evening Prayer (Curate)	9:30 Morning Prayer Lay Led	10am Holy Communion (Retired Clergy)	11am Morning Prayer (Lay led)	
<b>2<sup>nd</sup> Sunday</b>	10am Family Service Lay Led	10am Morning Prayer (Lay Led)		9:30am Holy Communion (Incumbent)			
<b>3<sup>rd</sup> Sunday</b>			10am Holy Communion (Incumbent)	9:30am Family Service (Lay Led)		11am Morning Prayer (Lay Reader)	6pm Evensong
<b>4<sup>th</sup> Sunday</b>			10am Family Service (Curate)	9:30 Morning Praise (Retired Clergy/Incumbent/lay led)	6pm Evening Prayer Lay Led	11am Holy Communion (Incumbent)	
<b>5<sup>th</sup> Sunday</b>	Benefice Service						

The above is a sample of the current pattern of services, based on February 2022. We would expect our new incumbent to review the pattern and work with the worship team to develop a new pattern of services which:

- Meets the need for traditional forms of worship and more contemporary services;
- Is sustainable;
- Ensures a fair distribution of services across the many churches in the Benefice;
- Has space to allow new events and styles of worship to emerge; and
- Reverts to a predictable pattern, month by month.

Church Services - The Dever Benefice – February 2022 – Final v3

Date	All Saints East Stratton	St James Hunton	St Mary the Virgin Micheldever	St Margaret's South Wonston	St Mary & St Michael Stoke Charity	Holy Trinity Wonston	St James Woodmancote	Readings Year C
6 <sup>th</sup> February 5 <sup>th</sup> Sunday of Epiphany			6pm Evening Prayer	9.30am Morning Prayer	10am Holy Communion	11am Morning Prayer		Isaiah 6.1-8[9-13] Psalm 138 1 Corinthians 15.1-11 Luke 5.1-11
			Rev'd Rob Rees	John Walsh	Rev'd Neil Britton	Roland Guy		
13 <sup>th</sup> February 6 <sup>th</sup> Sunday of Epiphany	10am Family Service with Baptism	10am Morning Prayer		9.30am Holy Communion				Jeremiah 17.5-10 Psalm 1 1 Corinthians 15.12-20 Luke 6.17-26
	Rev'd Rob Rees	Campbell Dye		Rev'd Dave Mapes				
20 <sup>th</sup> February 7 <sup>th</sup> Sunday of Epiphany			10am Holy Communion	9.30am Family Service		11am Morning Prayer		Genesis 45.3-11,15 Psalm 37.1-11,40,41 1 Corinthians 15.35-38, 42-50 Luke 6.27-38
			Rev'd Neil Britton	Ruth Guy / Iain Henderson		Peter Russell		
27 <sup>th</sup> February Last Sunday before Lent			10am Morning Prayer	9.30am Morning Praise	6pm Evening Prayer	11am Holy Communion	10am Morning Prayer	Exodus 34.29-35 Psalm 99 2 Corinthians 3.12 - 4.2 Luke 9.28-36[37-43a]
			Rev'd Rob Rees	Melinda Samms	Campbell Dye / James Gray	Rev'd Neil Britton	Roland Guy	

- For further information, please contact the Parish Coordinator, email: [coordinator.upperdever@hotmail.com](mailto:coordinator.upperdever@hotmail.com)

**Church Services - The Dever Benefice – July 2022 – Final**

<b>Date</b>	<b>All Saints East Stratton</b>	<b>St James Hunton</b>	<b>St Mary the Virgin Micheldever</b>	<b>St Margaret's South Wonston</b>	<b>St Mary &amp; St Michael Stoke Charity</b>	<b>Holy Trinity Wonston</b>	<b>St James Woodmancote</b>	<b>Readings Year C</b>
3 <sup>rd</sup> July Third Sunday after Trinity	5pm Celebration of Holy Communion			10am Morning Prayer		11am Holy Communion		2 Kings 5.1-14 Psalm 30 Galatians 6.[1- 6]7-16 Luke 10.1- 11,16-20
	Rev'd Rob Rees			tbc		Rev'd Neil Britton		
10 <sup>th</sup> July Fourth Sunday after Trinity	10am Holy Communion		6pm Evening Prayer	10am Holy Communion	6pm Evening Prayer	11am Family Service		Amos 7.7-17 Psalm 82 Colossians 1.1- 14 Luke 10.25-37
	Rev'd Rob Rees		Rev'd Rob Rees	Tbc – Clerical Registry	Roland Guy	Ruth Guy		
17 <sup>th</sup> July Fifth Sunday after Trinity		10am Morning Prayer	10am Café Church	11am Praise Service for Patronal Festival		11am Morning Prayer	6pm Patronal Service with Holy Communion	Amos 8.1-12 Psalm 52 Colossians 1.15-28 Luke 10.38-42
		Campbell Dye	Rev'd Rob Rees	tbc		Peter Russell	Rev'd Rob Rees	
24 <sup>th</sup> July Sixth Sunday after Trinity				10am Informal Family Service	10am Holy Communion	11am Morning Prayer		Hosea 1.2-10 Psalm 85 Colossians 2.6- 15[16-19] Luke 11.1-13
				Ruth Guy	Rev'd Neil Britton	Campbell Dye		
31 <sup>st</sup> July Seventh Sunday after Trinity	10am Holy Communion Benefice Service at Micheldever Rev'd Rob Rees							Hosea 11.1-11 Psalm 107.1- 9,43* Colossians 3.1- 11 Luke 12.13-21

- For further information, please contact the Parish Coordinator, email: [coordinator.upperdever@hotmail.com](mailto:coordinator.upperdever@hotmail.com)



'From his fullness we have all received, grace upon grace.'  
John 1:16

Diocesan Office, Wolvesey, Winchester SO23 9ND

t: 01962 737310 [www.winchester.anglican.org](http://www.winchester.anglican.org)



@CofEWinchester



[www.facebook.com/CofEWinchester](http://www.facebook.com/CofEWinchester)