



RINGWOOD
BENEFICE

Discover life, make a difference



Vicar

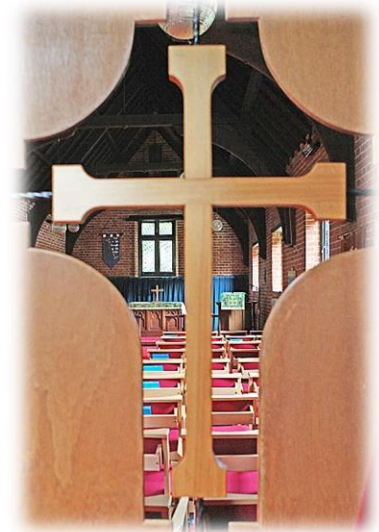
The Benefice of Ringwood with Ellingham & Harbridge and St Leonards & St Ives



DIOCESE of
WINCHESTER

INDEX

Page	Title
3-4	<i>Welcome</i>
5 - 7	<i>Introduction</i>
8	<i>Benefice Map</i>
9	<i>Our Vision</i>
10 - 14	<i>Our Church Life</i>
15	<i>Our Team</i>
16	<i>Finance</i>
17	<i>Governance</i>
18	<i>The House</i>
19	<i>Benefice Office</i>
19	<i>Role Description</i>
21 - 23	<i>Appendices</i>



WELCOME

Thank you for your interest in coming to work in the diocese of Winchester where we are committed to serving people and communities across Hampshire and East Dorset. Our vision is to 'Live the Mission of Jesus' and in doing so we want to make a difference and see lives transformed through the love of God.

We serve a range of diverse communities, from rural to urban, with our Cathedral being sited in the historic city of Winchester. From coastal Bournemouth to Andover, Southampton to the villages around Basingstoke, ministry takes place through our churches, chaplaincies and schools and we are delighted to encourage lay ministry in all its varied forms.

We are committed to being a truly representative diocese and we recognise our need to develop in diversity. The Diocese of Winchester is an exciting place to be and we look forward to receiving your application.



The Rt Revd Debbie Sellin, Bishop of Southampton

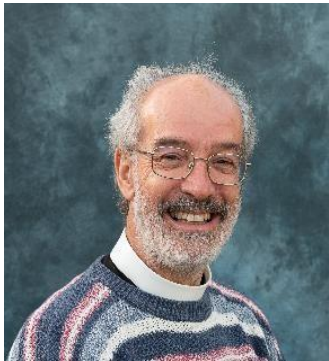
CHRISTCHURCH DEANERY

We are a very mixed deanery with 7 benefices and 26 churches. These range from suburban, through small town and large village to tiny hamlets. There is a variety of theology, spirituality and ways of being Church and we value and respect this.

The Synod is active and focussed on supporting the mission of the Parishes. And the Chapter is friendly and supportive. A Deanery Mission Action Plan is in place and we will shortly review and enhance it. We encourage all of our clergy to play an active role in the life of the Deanery.

We know that Christchurch Deanery is a great place to live and minister as together we seek to join with our Bishop in 'Living the Mission of Jesus'.

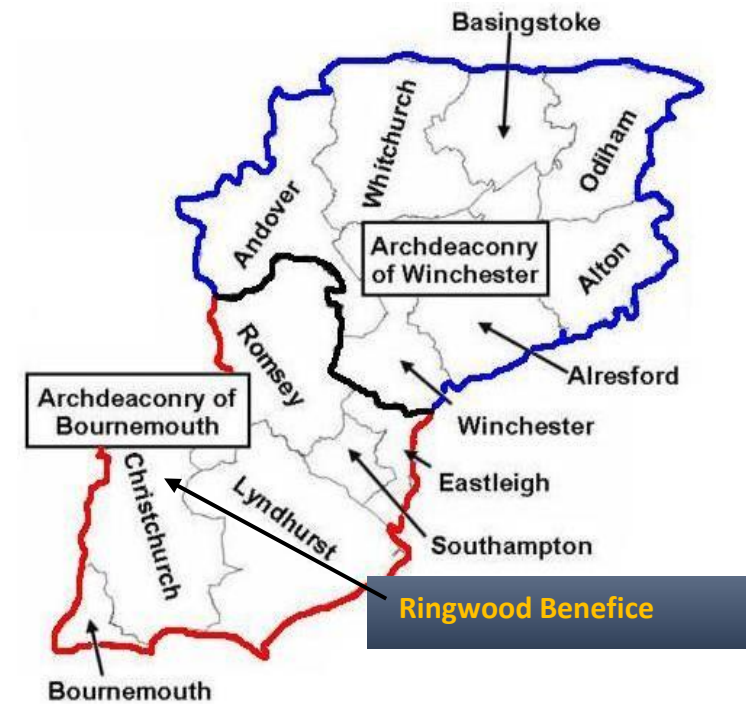
Revd Canon Gary Philbrick
Area Dean



Revd Canon Charles Stewart
Assistant Area Dean



Susan Lyonette
Lay Chair



INTRODUCTION

We are seeking a Vicar for the Benefice of Ringwood with Ellingham & Harbridge and St Leonards & St Ives in the Christchurch Deanery.

The Benefice represents an outstanding opportunity for an Incumbent to strengthen and encourage the existing faith communities and to extend the work of the Church in this part of Hampshire and Dorset.

We are delighted the Benefice has secured a house-for-duty post to support ministry across the Benefice. Our new incumbent, once installed, will have a pivotal role in making this appointment as soon as possible.

Ringwood is a fully inclusive Benefice and all applicants are welcomed.

The Benefice is geographically centred on the picturesque and historic market town of Ringwood on the banks of the river Avon but also includes suburban and rural areas in the Avon Valley on the western edge of the beautiful New Forest. The total population of the Benefice is approximately 21,000 and continues to grow.

The Benefice consists of two parishes.

The Parish of Ringwood with Ellingham and Harbridge consists of five churches :-

St Peter and St Paul, Ringwood

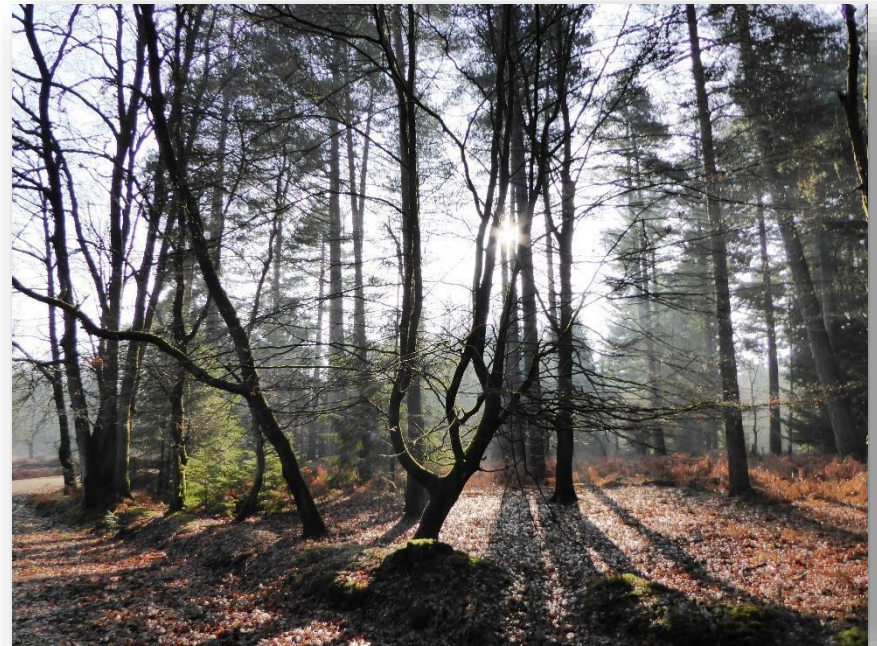
St John the Baptist, Poulner

St Paul's, Bisterne

St Mary and All Saints, Ellingham

All Saints, Harbridge.

The Parish of St Leonards & St Ives is a single church - All Saints.



Ringwood is the New Forest's main market town, with the Market Charter dating back to 1226. This very pretty town sits on the western edge of the Forest at a crossing point of the River Avon where the main road network intersects, going north to Salisbury and south to Bournemouth on the A338, and east - west on the major trunk road of the A31. A recently completed project by National Highways has widened the A31 to remove the familiar Ringwood bottlenecks. The road is now full open and traffic flows smoothly. The A31 connects with the M27 coast road to Portsmouth and beyond, and the M3 to Winchester and London.

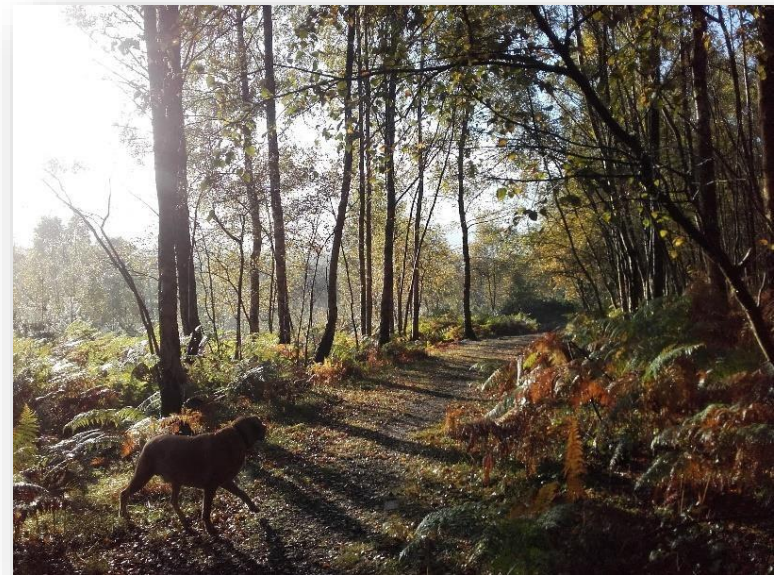
There are a number of railway stations within reasonable access and a good bus network in Ringwood itself, including National Express coaches to London as well as to Heathrow and Gatwick airports. Bournemouth and Southampton airports provide regular services to many European destinations.

The area is very well served by a number of state schools including an infants' school and a junior school at Poulner; a Church of England infants' school and a junior school in Ringwood itself; and a co-educational secondary school, Ringwood School which is a National Teaching Academy with approximately 1500 students within a few minutes' walk of the vicarage. St Leonards and St Ives has a primary and nursery school. There are also a number of independent schools including a large private nursery immediately adjacent to Ellingham Church.

The glory of this area is its proximity to the New Forest and to the Hampshire and Dorset coasts. The New Forest is a unique environment in Europe, including one of the largest remaining tracts of unenclosed pastureland, heathland and forest in south east England. There are miles of open country to be explored on foot, on horseback or by bike on designated cycle routes. The north of the Forest tends to be less crowded than the south in the tourist season and there are a number of excellent pubs to be discovered.

Close by are further open spaces of Moors Valley Country Park, a vast open space with a Play Trail, narrow-gauge steam railway, Go Ape tree top adventure, golf course, country shop, restaurant and more, and Avon Heath Country Park, a Green Flag-awarded park dominated by acres of lowland and wetland heath, grassland and heather, with pine and birch woodlands.

Our area is blessed with great leisure activities including outstanding cycling and horse riding, swimming, boating in the sea only six miles away, fishing, cinemas and theatres in Bournemouth and Salisbury and many very fine affordable eating places. It is a walker's paradise with not only the Forest and country parks, but also the Avon Valley Footpath.



Ringwood has its market once a week on Wednesdays along with monthly farmers' markets and occasional European markets. It has remained a delightful, unspoilt historic town with many independent shops, restaurants, pubs and cafes.



There is a swimming pool and leisure centre in Ringwood as well as a David Lloyd Club. There is a good public library which has a local studies centre, and a range of evening classes and leisure activities are on offer at the Greyfriars Centre in town. Bournemouth and Southampton are important cultural centres including a world-class orchestra and an international centre for dance, as well as art galleries and museums.

Ringwood has a very distinct community spirit. The whole community loves to come together at key events such as Ringwood Carnival in September each year, the biennial Pedal Car Grand Prix, Bonfire Night and Fireworks, and meeting Father Christmas on Christmas Eve. The whole town gathers in the Market Place to sing carols and drink mulled wine, and to give gifts to Father Christmas which are then distributed to children in need. It really is a wonderful place to live.



Benefice Map



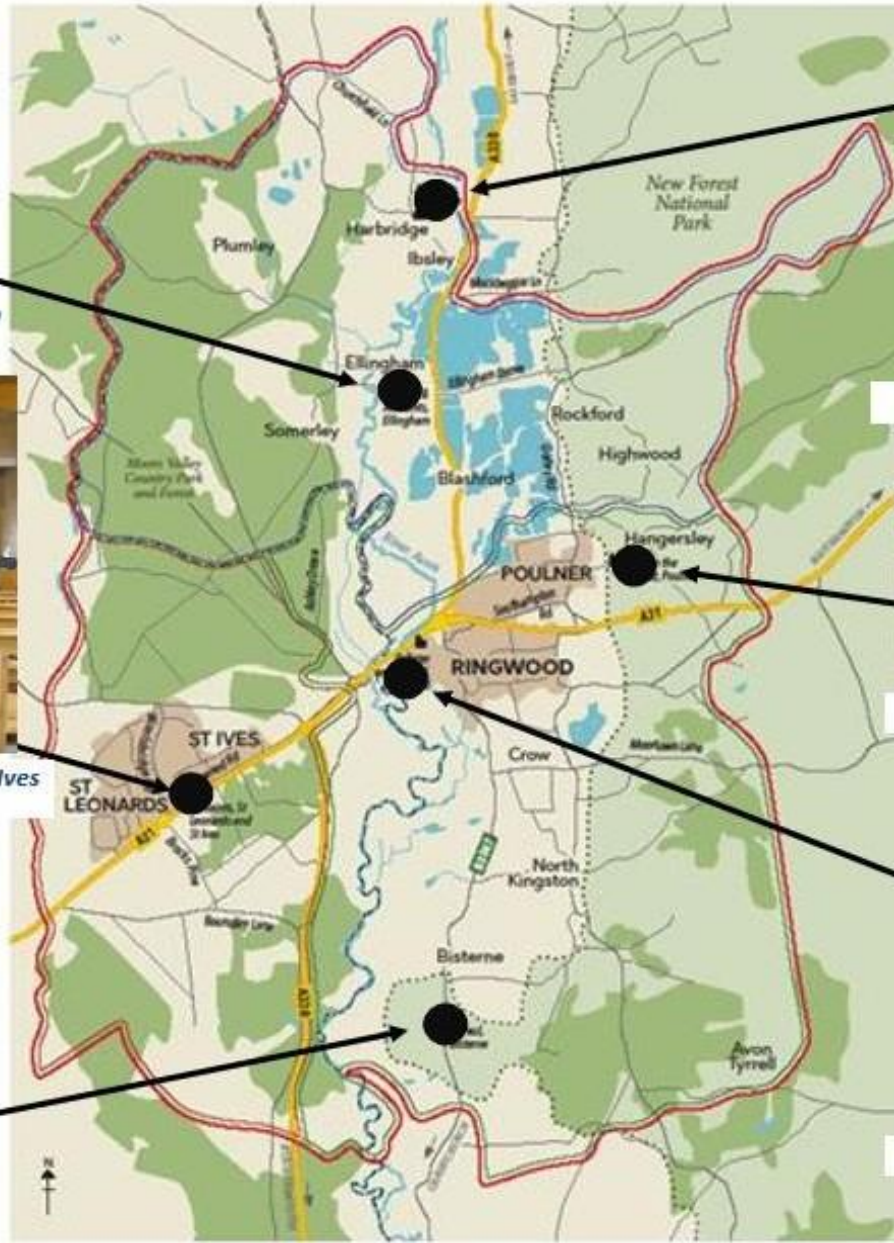
St Mary & All Saints Ellingham



All Saints St Leonards & St Ives



St Paul's Bisterne



All Saints Harbridge



St John's Poulner



St Peter & St Paul Ringwood

OUR VISION

Our vision for the future is to bring more people to know God's love and to deepen and strengthen the discipleship of those who are already part of our church family. We also want to continue to value and nurture the good things we already have and do. We long to be better at reaching out to our communities and to become more integrated in them. We also wish to enhance our support for the deanery, diocese, national church and our brothers and sisters in other countries, including building on our existing links with Kinkiizi, Uganda and Jaffa, Israel.

We are eager to increase our activity to protect the environment and God's wonderful creation.

The Benefice has faced challenges in recent years but we are recovering and believe there is tremendous opportunity to grow God's kingdom here.

The two parishes have produced a combined Benefice Mission Action Plan (Appendix 2). This was drafted in 2019 but has been recently updated and reflects the impacts of the pandemic and changing lifestyles.

Looking to the future, we wish to:

- Develop and embed pastoral care in all of our communities.
- Be innovative and enthusiastic for new styles of worship whilst still nurturing and encouraging our traditions.
- Continue to cherish and care for our much-loved churches, so that we might use them both to help people worship God and also for the wider benefit of others.
- Return the Parish of Ringwood to paying its full contribution to the Common Mission Fund as soon as we can.

And we wish to progress the Four Big Goals in our bMAP:

- To advance our Families Ministry journey with a new vision for YCF work.
- To continue the development of new worshipping communities.
- To extend our community involvement by making our resources available for community use, initiatives, and support, and by supporting community projects including those connected to the climate emergency.
- To revitalise, reimagine and re-establish ministry which has declined significantly in our churches since the pandemic and especially our three rural churches.



OUR CHURCH LIFE

Young People and Families Ministry

We have two Parent and Toddler Groups, held weekly, and two monthly Messy Churches. At All Saints St Leonards & St Ives, the Parent and Toddler Group is doing really well and is full. Messy Church has largely recovered from the effects of the pandemic, with some very enthusiastic families attending. At St John's, Diddy Dunkers is also thriving and continues to grow. Messy Church has consistently healthy numbers and is attracting new families, some of whom also attend a monthly cafe-style service.

Meet and Eat is a support group for several families, identified by Ringwood Infant School, held fortnightly at St Peter & St Paul's church. They enjoy a variety of play activities and share a meal together.

The Benefice serves the needs of young people aged 12 – 18, through IMPACT, a weekly youth group. Its main goal is to help the young people grow in their faith, with a short bible study, discussion time, games and an activity related to the topic. Social activities are also held throughout the year.

We are committed to increasing outreach to families and young people. We are looking for our new incumbent to support the church in achieving its vision, as detailed in our bMAP objective1. (see Appendix 2)



Pastoral

We value the importance of pastoral support and have people who operate across the Benefice alongside the ministry team. We provide many of the Pastoral Rites including Baptism, Marriage, Funeral Rites, Holy Communion for the housebound, Reconciliation and Ministry to the seriously ill and dying. We are currently in the process of reviewing pastoral support, developing our teams, and how we coordinate our efforts. We would like to reintroduce our healing ministry. We are looking forward to our new incumbent taking a lead in all pastoral matters.

Discipleship & Spiritual Development

Across the Benefice we offer a range of support groups which aim to encourage individuals in the development of their own spirituality and discipleship. Pre covid we had many groups meeting regularly but the pandemic has had an effect on the continuity of some of these activities. However, there are a number of groups that meet both face to face and also on zoom to look at scripture and to discuss in groups and share. We also have prayer groups that meet on a weekly basis. As part of our mid-week communion services we have opportunities for discussion and sharing of ideas as well as in our informal evening services which happen across the Benefice.

There are different groups that meet and there are informal times of prayer and discussion, E.g. Vintage Messy.

There are also small groups of people who meet to regularly pray together. During Advent and Lent we run Sacred Space which is a time where a group of people meet for contemplative prayer.

As a Benefice we also run Alpha courses which provide support in development of discipleship and when the course has finished, we encourage folk to join one of our home groups. We also have Impact, a group which supports the younger members of our communities.

We will be offering a warm space with soup and rolls to the whole community for the first 3 months of 2023 as a way of encouraging the local community to meet and share social time together.

Across the Benefice we have a diverse range of services aimed at meeting people where they are and encouraging them to develop their relationships with God.

Social & Wider Community Engagement

Across the Benefice we undertake a wide range of activities which strengthen friendship bonds, enable us to reach out to and engage with the wider community and raise funds to support our mission and ministry. Some are regular events such as coffee mornings, soup lunches and bring and share lunches. Others are one offs such as flower festivals, concerts, auctions and the Ellingham Show Tea Tent, all of which enable us to be a strong, visible presence to thousands of people a year.



Our Churches

Our six churches are very different and we love that! We embrace the wide variety of styles of worship we can offer and aim to have something for everyone, wherever they are on their Christian journey, and especially if they haven't yet begun. Our services range from Book of Common Prayer, through Common Worship to less formal and fully informal. We conduct large numbers of occasional offices and value these connections with the people in our communities. We have four retired clergy with PTO and six licensed lay ministers. Five lay people now hold Bishop's Commission for Mission.

Each church has a dedicated local church committee organising everything day-to-day. We are very active in fund-raising and social events.

We aim to be fully embedded in our communities and to use our church resources, principally our buildings, to benefit others.

We have recently hosted among others:

- an addiction support group
- a bereavement group
- support for those struggling with mental health issues
- a safe place for meals and play for vulnerable families
- facilities for Ukrainian guests

Our churches play lead roles in civic events, especially Remembrance Sunday, Armed Forces Day, Royal occasions, Christmas, and Easter.

St Peter & St Paul

The Ringwood Parish Church is at the heart of the town in many ways – geographically, emotionally, and spiritually. Townspeople see it as their church, and we conduct many baptisms, weddings & funerals, and civic events. The congregations enjoy a broad range of worship styles. We are very active in repairing and refurbishing our beautiful church.

St Mary & All Saints

Ellingham is a Norman church whose congregation enjoy mainly traditional Prayer Book services, enhanced by our enthusiastic choir. However, we also hold monthly modern family services. We have strong links with the nursery school next door, local scouts and with Moyles Court, a local boarding school



St John's

The worshipping community at St John's says, "We love St. John's, we want to worship there. It is not too big or too small. It is a real family: caring, family friendly, peaceful, informal, honest, open, welcoming, and kind.

Spiritual gifts are allowed to thrive. It has 'unstuffiness'. The LLMs are delightful and gifted."

We have a busy weekly Toddler group, monthly Messy Church and monthly café-style Family Service. The Benefice also holds a contemporary, evening worship service 'The Well' in the church twice monthly.

St. John's has a spacious church hall with well equipped kitchen and a smaller room with a kitchenette. Both are used by the church, local community groups and a business.



St Paul's

St. Paul's Bisterne is one of the Benefice's rural churches representing the countryside and our connection with nature. It is embedded in a large mixed farming estate, which hosts the Barn Dance, Benefice Harvest Festival, Ride and Stride, Scarecrow Competition, Open Farm Sunday for 4,000 people and a National Garden Scheme opening.

All Saints Harbridge

Our church has 15th century origins and was rebuilt in 1838. Harbridge is a small rural hamlet of about 25 houses with the church as the focal point. Alongside services it is a community space for meetings and concerts. We hold a Carol service every Christmas with Hyde Brass Band and traditional services on Easter Sunday and Christmas Day.



All Saints St Leonards & St Ives

All Saints Parish Church is a modern style building. Here you will find a warm, supportive church family. Our services range from a BCP service, Holy Communion, Service of the Word and an Informal service. We run a toddler group, Messy Church and periodically Vintage Messy. A well-equipped modern Church Hall is adjacent which is currently providing a venue for a 'Warm Spaces' time every Tuesday during the winter.



Churches Together

Churches Together In Ringwood and District actively engages in sharing the love of God through outreach and community life. They regularly run Lent groups and a Walk of Witness on Good Friday. Under the banner of 'Love Ringwood' CTIRD has supported town events like the Jubilee celebrations, the lockdown 'Drive Through Carol Service', 'Angels of HOPE' with schools and the 'HOPE 22' survey earlier this year. CTIRD has also been instrumental in holding our local authorities to account on their response to refugees and the homeless, and has recently run the Recovery Course for those challenged by addiction. Most recently CTIRD led the formation of 'Love Ukraine' supporting Ukrainian refugees, matching them with local families and providing ongoing help.

OUR TEAM

We are immensely blessed with a wonderful and gifted team of experienced retired priests and licenced lay ministers who give generously of their time and talents to support churches across the Benefice, and are ably supported by our churchwardens in both parishes. In the past we have received Curates in training and we enjoy a close relationship with Moorlands College located on the edge of the Benefice, to which we offer placement opportunities for students.



House for Duty Minister

Richard Powell LLM
Steve Wood LLM
Ruth Freeman LLM



not pictured
Derick Potter LLM
Peter Jackson LLM
Elizabeth Halford LLM



Rev Canon Michael Anderson
Rev Terry Roberts
Rev Canon Richard Emblin
Rev Canon Peter Vargeson



Lynne Wilson CW SLSI
Frankie Hester CW SLSI
Matthew Steele CW Ringwood
Jacqueline Brown CW Ringwood

FINANCE

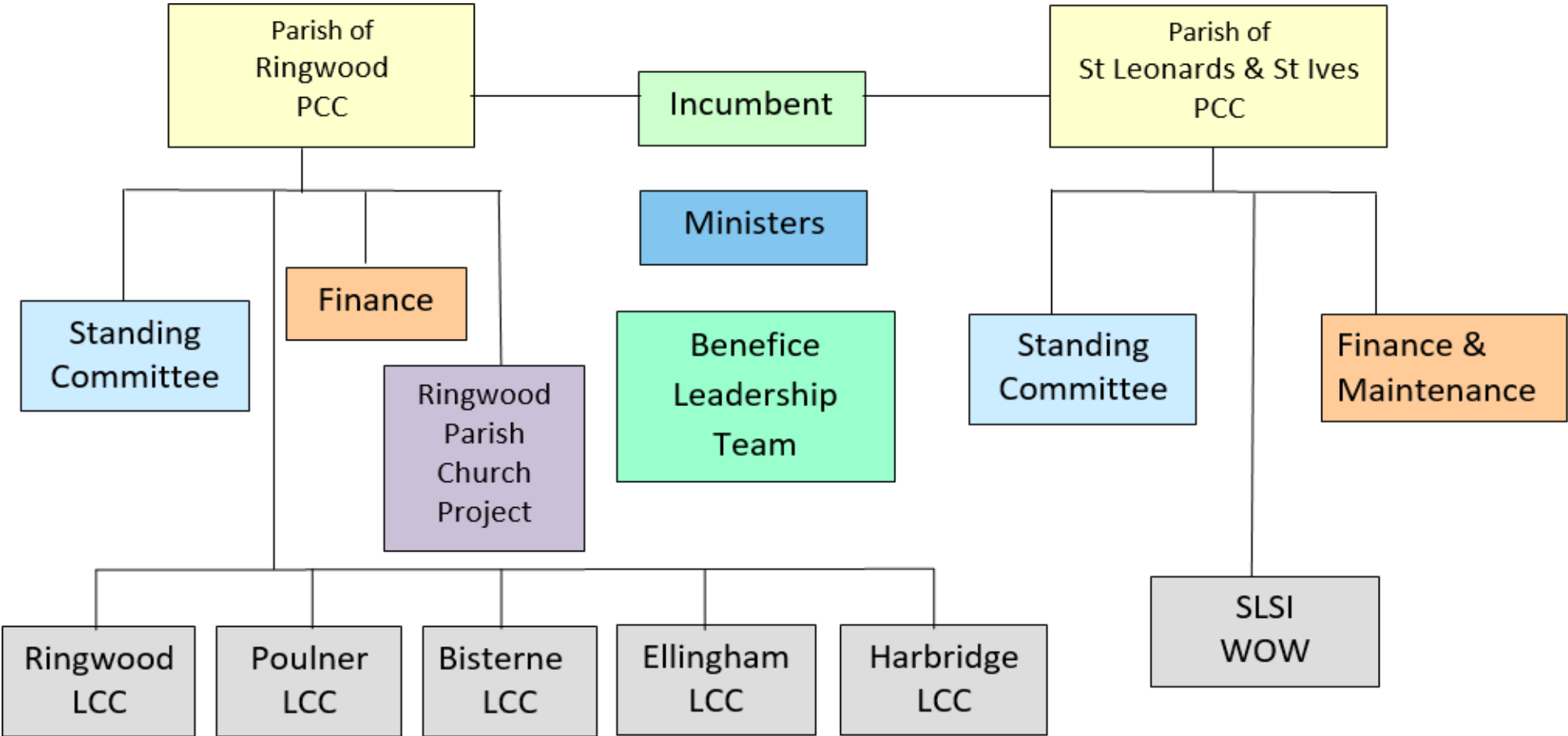
The two Parishes operate their finances separately under the control of their respective PCC Treasurers. Both Parishes' financial reports for 2021 can be reviewed on the Benefice website here <https://www.ringwoodbenefice.org.uk/about-us/our-mission/>

Both Parishes are committed to the idea of sacrificial giving to fund our mission and ministry and are seeing increasing uptake of the Parish Giving Scheme. While, as with most parishes, we have been hard hit by the pandemic and resulting loss of income and declining congregations, we have experienced Finance Committees in both Parishes who are eager to work with our new incumbent to embed the idea of the joy of giving across the Benefice. Ringwood Parish is particularly keen to return to paying its CMF contributions in full as soon as possible. The Parish of St Leonards & St Ives continues to pay its contribution in full.

The Parish of Ringwood employs a bookkeeper to help with the preparation of the accounts and pay the monthly salaries of our employees. St Leonards and St Ives employs a part-time Parish Administrator to assist with the accounts. Across the Benefice, all costs and expenses are split between the two Parishes and six churches according to their worshipping community numbers.



GOVERNANCE



Key: LCC = Local Church Committee WOW = Worship, Outreach, and Wardens Committee

Ringwood Benefice subscribes to the safeguarding policies and guidelines of the Church of England and is committed to safeguarding as an integral part of the life and ministry of the Church.

<https://www.ringwoodbenefice.org.uk/safeguarding/>

THE HOUSE

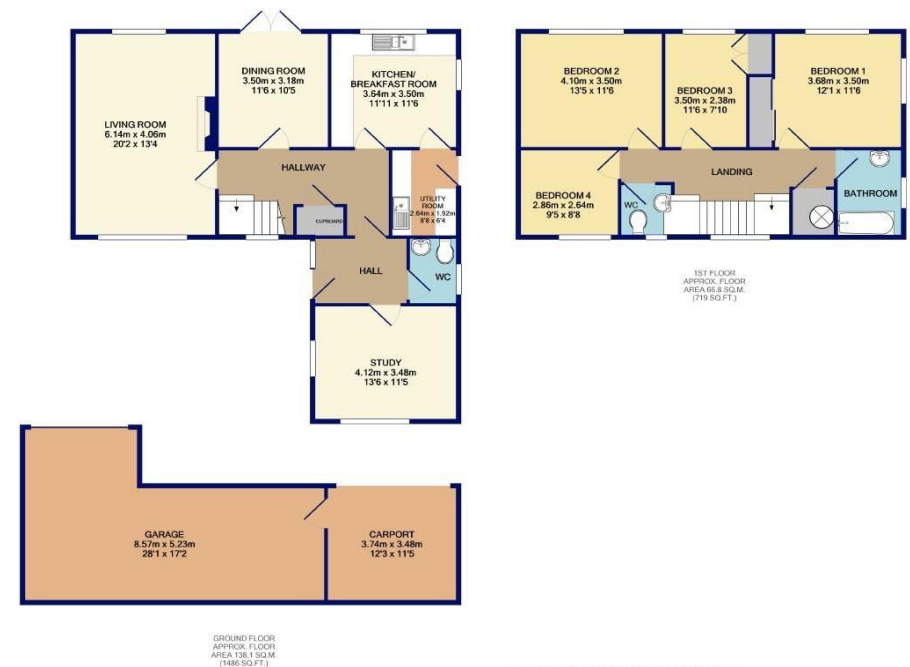
The present vicarage was built in the 1970s and is situated close to the centre of Ringwood approximately 150 metres to the south of the A31 within walking distance of all major facilities in the town including schools and a doctor's surgery. It is an attractive brick-built structure set back from the road and sheltered from passing traffic. It faces north/south and has gas central heating.

The accommodation consists of the following:

- Ground floor: entrance hall, study, wc and cloakroom, sitting room (with working fireplace), dining room which opens on the garden, fitted kitchen and utility room.
- First floor: four bedrooms, family bathroom.

At the rear of the house to the north there is a good-sized enclosed garden. In the front there is parking for approximately four cars. There are two good outbuildings together with one garage. The outer wall of the outbuildings is listed.

The house has been well maintained. The windows have recently been replaced with double-glazed units and wooden flooring has been installed throughout the ground floor. The house is currently let. The Benefice has undertaken to ensure that the house is handed over to the new incumbent in a good condition.



TOTAL APPROX. FLOOR AREA 204.9 SQ.M. (2208 SQ.FT.)
While every effort has been made to ensure the accuracy of the floor plan contained herein, measurements of doors, windows, rooms and any other items are approximate and no responsibility is taken for any error, omission, or misstatement. This offer is for illustrative purposes only and should be used as such by any prospective purchaser. The services, systems and appliances shown herein have not been tested and no guarantee can be given regarding their operation or efficiency.

THE BENEFICE OFFICE

In 2018, the small church hall at St Peter & St Paul was converted into a suite of offices. The facilities include a kitchen, waiting room and w.c. Behind a security door are three offices or meeting rooms, a storage cupboard, space for the printers and an open area for small and informal meetings. The Parish of Ringwood's Office & Communications Manager works from the Benefice Office.

Expenses are shared between the two parishes.

There is a further office at St Leonards & St Ives, and the Administrator of that Parish works from there.

ROLE DESCRIPTION

This Role Description should be read in conjunction with the vision, aims and priorities set out in this profile.

We are looking for someone who

- Has a real pastoral heart, understanding the importance of nurture and pastoral care. You will need to be approachable and engaging to our church families and the wider community.
- Has proven experience of collaborative leadership in a large diverse team of lay and ordained people.
- Respects and follows the different traditions of all our churches, while being innovative, dynamic, and imaginative in introducing new styles of worship where appropriate.
- Has a strong personal faith with a daily routine of prayer and reflection.
- Delivers sermons which challenge and engage us in a relatable and understandable way.
- Will be a visible, encouraging, and supportive presence within our communities, both representing the church and helping us to truly serve those around us.
- Has a proven experience of growing and developing church families ministry across all age groups.
- Has strong organisational skills, sound financial management ability.
- Has an up to date understanding of and commitment to safeguarding issues and principles and will support all church officers in this.
- Is a strategic thinker who can plan ahead and communicate effectively.

The role description should always be read in conjunction with the [Guidelines for the Professional Conduct of the Clergy](#).



HOW TO APPLY

A full application pack, along with Terms & Conditions, is available from the Diocesan website, [here](#).
For an informal conversation about vacancies in the Winchester Archdeaconry please contact:

The Right Reverend Debbie Sellin
Bishop of Southampton 01962 737315 bishop.debbie@winchester.anglican.org

Jane Hammond
Clergy Appointments Assistant 01962 737310 clergy.appointments@winchester.anglican.org



‘From his fullness we have all received, grace upon grace.’
John 1:16

Diocesan Office, Wolvesey,
Winchester SO23 9ND t:
01962 737310 w:

www.winchester.anglican.org



@CofEWinchester



www.facebook.com/CofEWinchester

Appendix 1

Present pattern of services Jan 23 (average attendance 2021/22)

	St Peter & St Paul Ringwood	All Saints St Leonards & St Ives	St John the Baptist Poulner	St Paul Bisterne	St Mary & All Saints Ellingham	All Saints Harbridge
1 st Sunday	08:00 BCP HC (15) 09:30 The Gathering (14) 11:00 HC (40)	10:00 HC (30)	10:30 SOTW (25)	18:00 Evensong with HC (10)	11:15 HC (25)	
2 nd Sunday	11:00 HC (40) 09:30 The Gathering (14)	08:00 BCP HC (15) 10:00 SOTW (26)	10:30 'Soft Start' service in Church Hall (25) 18:30 The Well (28)		11:15 Matins (12) or family service with local school (30)	
3 rd Sunday	11:00 Morning Prayer with Baptism (65)	10:00 HC (30) 18:00 Reflections@6 (6)	08:00 BCP HC (15) 10:30 HC (25)	10:30 BCP Matins (10)	11:15 Matins (12)	
4 th Sunday	08:00 BCP HC (15) 09:30 The Gathering (14) 11:00 HC (40)	10:00 SOTW (26)	10:30 SOTW (25) 18:30 The Well (28)		11:15 Matins (12) or family service with local school (30)	10:00 Matins (Quarterly HC) (8)
5 th Sunday	08:00 BCP HC at St John's (15) and 10:30 Benefice Service at one of our churches (70)					
Wednesday	10:30 HC (12)					
Thursday		10:00 HC (12)				
Messy Church		2 nd Wednesdays 3.30pm	3 rd or 4 th Sundays 3pm			
IMPACT Benefice Youth Group	Wednesday 19:15 (term time only)				Electoral Roll 2022	
Toddler Groups (term time only)		Wednesday 09:30 Toddler Group	Monday 09:15 Diddy Dunkers		Parish of Ringwood	215
					Parish of St Leonards & St Ives	71

Occasional Offices

	St Peter & St Paul Ringwood	All Saints St Leonards & St Ives	St John the Baptist Poulner	St Paul Bisterne	St Mary & All Saints Ellingham	All Saints Harbridge
Baptisms	24	2	0	1	4	0
Weddings	16	1	0	0	10	2
Funerals	22	6	3	4	2	1

Appendix 2

bMAP19 - Summary Plan from 2019 with August 2022 update comments

Our Objective	Objective Description: What do we want to <i>achieve</i> ?	Impact: How will this make a <i>difference</i> to your parish? We look for this to happen under God.	August 2022: Is this objective still relevant? Has it been achieved; has it changed?
1	<p>Advance the 'Families Ministry Journey' at St Peter & St Paul, Ringwood, St John's Poulner and All Saints St Leonards & St Ives.</p> <p><i>The Families Ministry Journey builds on the relationships built via occasional offices and schools ministry and ensure that in each Church positioned for ministry to families there is a Toddler Group, Messy Church and Accessible Service to which people can be intentionally invited.</i></p>	<ol style="list-style-type: none"> 1. Missing generations, including the 45-60 age group, become represented in the life of the Church. 2. Core worshipping pattern spread across the week rather than wholly focused on Sundays 3. Provides events that unchurched and de-churched people can be confidently invited to. 4. Offers the basis for an ongoing relationship with baptism families. 	<ul style="list-style-type: none"> • Just prior to the COVID lockdown our Children's and Families minister was made redundant, this and the pandemic had a significant impact on our plans. Despite this, our amazing lay leaders have continued both toddler groups and Messy Churches in two of our three town churches. Our Benefice YCF group has been developing vision to support this work and reach further into our community. In the last year a new group for families started, in collaboration with the school, supporting some vulnerable families • Nothing being done to attract missing generation 45 – 60 age group, and should be addressed
2	Grow three new worshipping communities	<ol style="list-style-type: none"> 1. Allows for the possibility that outreach activities e.g. Toddler Groups might become worshipping communities in and of themselves. 2. Improves the accessibility and presence of the Church on New Housing Developments in the Benefice. 3. Develops our understanding and experience of Church beyond 'established' congregations. 4. Facilitates diversity in worship. 	<ul style="list-style-type: none"> • During lockdown, a new missional worshipping community formed around the Sunday 9.30am time slot at SPSP. While still in the forming stages, this community is both gathered and scattered throughout the week, not just a Sunday service. Its intention is to be contextual, missional, ecclesial, and formational, building community through social groups, small groups and gathered services/events. The Community is distinctive from the established church community but draws from these and includes other members who do not identify with the existing worshipping communities.

3	Launch two mission-led social enterprises - a community café and indoor play centre.	<ol style="list-style-type: none"> 1. Builds the 'common good' through Church providing facilities that support members of the community. 2. Promotes needs-based evangelism. 3. Allows for missional 'spin-offs' e.g. well-being sessions (café) and Godly-Play (indoor play centre). 4. Offers the Parish sustainable income streams that resource our MAP. 5. Develop new worshipping communities out of the social enterprises. 	<ul style="list-style-type: none"> • We haven't been able to achieve this objective and have realised launching two social enterprises is too ambitious at present • We want to have a community focus, be a missional presence in the community offering space and support, using the buildings for community enhancing activities such as The Recovery Course, Meet & Eat, The Bereavement Group, hospitality for Ukrainian guests • Our work in developing eco-church and creation care also fits with community environmental projects such as RACE (Ringwood Action for the Climate Emergency)
4	Revitalise, re-imagine, and re-establish rural ministry.	<ol style="list-style-type: none"> 1. Rural churches become focal points for the whole communities into which they are deeply integrated. 2. Build a culture of discipleship appropriate to a rural context 3. Increase the number of occasional offices held by engaging with local communities 4. Ensure our buildings are welcoming to the local community, tourists, passers-by, or those seeking a quiet space 	<ul style="list-style-type: none"> • This is still a very relevant goal but has obviously been impacted by the pandemic. • Rural congregations have declined significantly since Coronavirus so the need to re-imagine and revitalise our rural churches is more vital than ever