



The Parish of Hordle and Tiptoe
In the deanery of Lyndhurst

INDEX

Page	Title
3	Introduction
4 - 5	Welcome from the Diocese
6	Our vision
7 – 9	Our Church Life
10 – 12	Our team
13 – 14	Our Organisation
15	Church Cottage
16 - 17	Role Description and person specification
18	How to apply
19 – 22	Appendices



INTRODUCTION

We are seeking a House for Duty Minister to share in the incumbent's ministry to the whole parish, who can lead the church family forward on a focal area of ministry, according to the successful candidate's gifting and passion. Examples of areas this might include are pastoral care, community outreach or evangelism, amongst others.

The role has a long history of focus at St Andrew's, Tiptoe, by dint of the house's location adjacent to that church; it is anticipated that the incoming minister will continue to oversee and care for that church and wider village community as a priority, but with a clear ethos of sharing ministry with the incumbent across the parish that involves regular involvement in all areas of parish life.

Hordle is located in the S.W. corner of Hampshire on the fringe of the New Forest. Hordle has 1700 dwellings, with plans for extensive new development within the village, a C of E Primary school adjacent to the church and a limited range of shops. Tiptoe is a small village with St. Andrew's church, River of life church, a pub, a Primary school and approximately 160 dwellings.

New Milton and Lymington are nearby and offer a wide range of shopping facilities, street markets, a hospital and surgeries.



Lymington, from where there is a ferry to the Isle of Wight, and Milford on Sea are popular holiday centres. There is a direct rail link to Bournemouth, Southampton and London nearby.

This appointment is on a locally supported ministry basis.

WELCOME TO WINCHESTER DIOCESE

Thank you for your interest in coming to work in the diocese of Winchester where we are committed to serving people and communities across Hampshire and East Dorset. Our vision is to 'Live the Mission of Jesus' and in doing so we want to make a difference and see lives transformed through the love of God.

We serve a range of diverse communities, from rural to urban, with our Cathedral being sited in the historic city of Winchester. From coastal Bournemouth to Andover, Southampton to the villages around Basingstoke, ministry takes place through our churches, chaplaincies and schools and we are delighted to encourage lay ministry in all its varied forms.

We are committed to being a truly representative diocese and we recognise our need to develop in diversity.

The Diocese of Winchester is an exciting place to be and we look forward to receiving your application.



The Rt Revd Debbie Sellin, Bishop of Southampton and Acting Bishop of Winchester

LYNDHURST DEANERY

The deanery has a mix of suburban, market town and village parishes and is located in the south of the diocese, within the archdeaconry of Bournemouth. The life of the deanery includes an active Synod and a friendly and supportive Chapter. We work together to find ways to enable all the people of our parishes to live out their calling in our shared mission and ministry and encourage all our stipendiary clergy to be active within the deanery so that their skills and gifts can be used to build up the whole deanery.



Simon Newham
Area Dean



Alison Bennett
Assistant Area Dean



Bill Andrews
Lay Chair



OUR VISION

We are a strong parish with a clergy and lay team that is mutually supportive, believing in unity without uniformity.

Our vision is to be a welcoming, thriving and growing Christian family that is fully integrated into the wider community of which we are part, but evolving to reflect the changes in society, while fully supporting the Deanery, Diocese and needs of the wider world.

Our parish has a current Parish Mission Action Plan (pMAP) that documents planned growth in the life of the church and continued outreach into the community.

Looking to the future, we wish to:

- Be open to new initiatives, led by the Holy Spirit, to encourage people on their Christian journey.
- Make our church more relevant to daily life through involvement in and with our wider village communities.
- Develop further the pastoral care within the church so that all may feel included.
- Develop our vision to reach the under 35s with the gospel, beginning with the appointment of a Children's/Youth Worker.
- Capitalise on the skills and experience of our church members to share in the ministry of the church.
- Nourish, encourage and increase contact with all age groups across the parish with the aim of welcoming them into the church family.



OUR CHURCH LIFE

Extending a hand in friendship and offering a warm welcome to all is very important to us in the life and mission of our parish. Our services seek to cater for a wide variety of preferences with Parish Communion, Morning Prayer, Contemporary Family Worship and All Age Worship. Our 10:30 service is available to view online. On Sunday evenings we run a monthly youth group for school years 5 & 6, and occasional Prayer and Praise Services.

The priorities identified in our pMAP, are central to the worship and life of our parish, so developing discipleship, small groups, young people's work and deepening our prayer life are key to our forward thinking. We are blessed by the volunteers who support our ministry. Four retired clergy, two Licensed Lay Ministers, three BCM Leaders, three Service leaders and several Lay Pastoral Assistants provide invaluable help across the many areas of Church Life.

Our Church website address is: <http://www.hordleandtiptoechurch.org.uk/>

Our Church Facebook Page is: <https://www.facebook.com/HordleParishChurch/>

Our Church You tube channel is: <https://www.youtube.com/channel/UCnxKqnDJOnV9iDCOPixjFVA>

ALL SAINTS' AND ST. ANDREW'S

The Incumbent is Vicar of the Parish of Hordle and Tiptoe. The two churches occasionally have joint services and the congregations enjoy social events together. The Ministry team serve in both churches.

We are thankful that 2021/2022 saw our worshipping community replenished with new participants and the flourishing development of the Church, All Age Worship and Online service initiatives. We have run successful Alpha courses and will do so again. A church prayer meeting is held weekly online and every 1st Monday together in the hall.



Around two thirds of the worshipping community is actively involved in the ministry of the Church and its many activities. Engaging the talents and time of working parents and retaining youngsters through their teenage years remain as notable challenges.

Discipleship and Spiritual Development

Small Groups provide a place where people can share their lives, receive and give pastoral support, grow as disciples and encourage each other to live as Christians in our rapidly changing world. There are 8 small groups across the parish, mainly meeting in the evening. We also have a Quiet Garden offered monthly for reflection and meditative prayer. A Men's Breakfast takes place four times a year.

Church members are encouraged to read the Bible regularly and the 'Bible in a Year' App has been well received.

The Parish is committed to mission work both at home and overseas which includes: Butare Diocese in Rwanda, The Leprosy Mission, Tearfund, The Bible Society, Mission Aviation Fellowship, Hordle C of E Primary School, Samaritan's Purse Children's Christmas Shoebox Appeal and the Basics Bank in Lymington.

Young People

The 10.30 service at All Saints' includes groups for children up to Primary age. All Age Worship (1st Sundays at 10.30) brings the whole congregation together for an informal service in the Memorial Hall. During the week, 'Little Angels' welcomes pre-school children (approx. 50) and their parents and carers, on Tuesday mornings and afternoons.

In April 2023 a new youth group for school years 5-6 was launched, called Rooted. Meeting monthly, this has been a great success, and the current question is how to grow the group to serve new children without losing the children we currently welcome.

We have recently successfully recruited a Children's and Youth Worker, and we look forward to welcoming her into the parish and setting her loose!



Schools

A key area of our ministry is working in close partnership with our local Voluntary Aided Primary School at Hordle which have recently retained their top gradings of 'Outstanding' by Ofsted (2022) and 'Excellent' by SIAMS (2023). The SIAMS report, in particular, praised the remarkable way the school integrates its Christian ethos throughout the school, and the strong partnership they maintain with the incumbent and the church more widely.

In the autumn of 2023 the headteacher of 16 years, Mrs Fiona Adams, will be succeeded by Miss Lou Trim, the school's Deputy Head of 14 years. The new Head and the (relatively) new Incumbent are looking forward to further developing the strong and mutually rewarding bonds between church and school that have been fostered by Fiona and the previous Vicar. The Incumbent takes regular assemblies and the school uses All Saints' Church and Hall for services and celebrations. Several members of the church family, including the Incumbent, sit as Foundation Governors on the school's governing body.

This strong tie means that we have consistently filled our new youth group to capacity with Hordle pupils alone. This is a happy problem to have! Nevertheless, we do want to find ways to expand our ministry to this age group across the whole parish and beyond, and we hope our new Associate Vicar, alongside our incoming Children's and Youth Worker, will be able to contribute positively towards this.

Tiptoe (126 pupils) school welcomes an Open the Book team each week in term time, lead by St Andrews congregants and supported by other local Christians; this link has been clearly appreciated by the school and in the last year the school have shown interest in doing more together. This has included a visit by one class to see All Saints church as part of an RE lesson and a visit to the school from our mission partner, MAF, with their demo plane and flight simulator, which was initiated by one of our church family.

At the end of each year the leavers at both schools are presented with a Youth Bible.

Social Life

A wide range of social events occur across the parish which also provide opportunities to invite friends. These include: Luncheon Club and Tea for older members, coffee at the 'Potting Shed' Café, Wednesday coffee morning at Tiptoe, Men's Breakfasts, Churchyard work parties, Church tent at the Hordle Summer Fair, an annual Quiz night, Village Voices Choir, Christmas Community Choir, Bell Ringing, Handbell Ringing and Hordle Community Association Café on a Saturday. We also support the warm spaces initiative.



OUR TEAM

As well as those listed below we have a team of retired clergy, LLM's, trained laity, and over 100 volunteers who serve the church in all the activities organised by the church. (See Appendix 3)

Vicar – Revd. Phil Mullins

Phil has been Vicar at Hordle and Tiptoe since January 2022. He is married to Chloe and they have two daughters and a son who attend Hordle Primary School. Phil is passionate about opening the scriptures to share his faith and help others come to know Christ better for themselves, and loves a good deep philosophical discussion with anyone. In his spare time he enjoys complicated boardgames, movies, and getting out to the beach or the Forest.



House for duty - Vacant

Gill Morris - Churchwarden

Since early days Christian activities have been a huge part of Gill's life and her service has been mostly with children. She is a retired head teacher, having taught in East London, Kenya and locally. She has worshipped at Hordle for 45 years. Her spare time is spent travelling, walking and painting.



Duncan Argyle – Churchwarden

Greatly blessed by having Christian parents, Duncan's fledgling faith found its firm foundation whilst on Christian summer holiday camps. Retired after 40 years teaching, being Churchwarden, responsible for fabric, offers further opportunity to serve God. Duncan enjoys family life (4 children and 6 grandchildren), gardening, hand-bell ringing and golf to keep him busy.



Andrew Franklin – Treasurer

After qualifying as a chartered accountant, Andrew worked in the industrial sector and enjoyed managing people and finances. His last job for the Anglican Communion based in London was the most rewarding. Andrew is married to Leanne with four grown up children and two grandchildren. Andrew moved to the area in 2015. He loves sport, playing golf and going for walks.



Ed Hood – Deputy Churchwarden (Hordle) Ed retired from patternmaking in 2010 and moved to Hordle from Wokingham in 2014. He and his wife Pat have attended All Saints' and been active members in the life of the church since then. He has been deputy churchwarden for several years and along with Pat run a fortnightly small group. He enjoys playing golf, reading and woodturning.



Mary Moynagh – PCC Secretary

Mary and her husband David moved to Sway in 1999, Mary with a life-threatening illness. God worked a healing miracle and following her recovery she is glad to serve God using her gift of Administration in various roles in the Church. In her spare time she enjoys sewing and other crafts, decorating, gardening, handbell ringing and singing.



Peter Reece – Parish Administrator

Peter is the Parish Administrator, he also occasionally preaches and leads worship. Peter lives in New Milton, is married to Alex and has three teenage girls. Peter enjoys writing novels, cycling, and long walks on the beach. He also advocates on mental health issues.



OUR ORGANISATION

Governance is provided by the PCC which meets six times a year. As well as the PCC there are a number of Committees that look after the different areas of Ministry. The PCC has the responsibility of co-operating with the incumbent in promoting the whole mission of the church, pastoral, evangelistic, social and ecumenical. The PCC has maintenance responsibilities for both churches and halls.

There are 149 parishioners on the Electoral Roll across the whole parish (30 attend St. Andrew's Tiptoe)
The average weekly attendance is 25 at St. Andrew's and 75 + 10 children at All Saints' but this number increases considerably at festivals.

Report on finance:

The total Income of the PCC was £193,374 in 2022. This included donations of £26k for the employment of a children's and Youth worker.

We have just over 80 regular givers (some are couples). The regular giving in 2022 with Gift Aid was £136K. Income from lettings at the two church Halls was £15K. and a further £15k from letting Church Cottage. The remainder of our income came from fees, giving to our Mission Partners, Plate collections, donations, legacies and grants.

We understand the value of the Common Mission Fund. In 2022 we have paid in full our request from the Diocese to Common Mission Fund in the sum of £88k.

Total expenditure in 2022 was £154,485. Clergy expenses are met in full. The financial state of affairs at the close of 2022 was regarded as satisfactory.

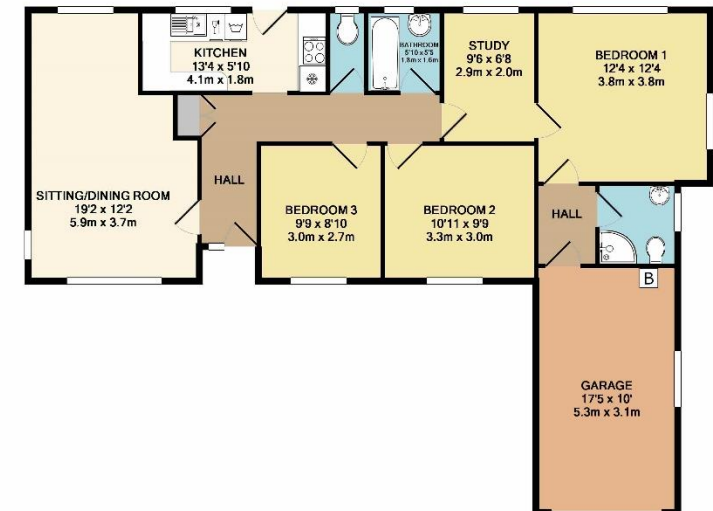




CHURCH COTTAGE TIPTOE SO41 6FR



Church Cottage is a delightful 2/3 bedroom brick built bungalow in a rural setting on the edge of the New Forest National Park. Located in the southern part of Tiptoe village, it faces north/south, and is set back from the B3058 directly across from St Andrew's Church and Church Hall. The accommodation consists of the following: a large living room, a kitchen, a study/second bedroom, an ensuite bathroom to the master bedroom, a separate WC and bathroom and dining room/third bedroom. It also has: a spacious garden chalet office, gas fired central heating, UPVC double glazed windows, an integral garage, a car port, ample external parking for 6 cars and an easy-to-care-for garden with greenhouse



TOTAL APPROX. FLOOR AREA 1214 SQ.FT. (112.8 SQ.M.)
While every attempt has been made to ensure the accuracy of the floor plan contained here, measurements of doors, windows, rooms and any other items are approximate and no responsibility is taken for any error, omission, or misstatement. This plan is for illustrative purposes only and should be used as such by any prospective purchaser. The services, systems and appliances shown have not been tested and no guarantee as to their operability or efficiency can be given.
Made with Microplan 56219

ROLE DESCRIPTION AND PERSONAL SPECIFICATION

This should be read in conjunction with Our Vision, set out in this profile.

A House for Duty Minister will share in the incumbent's ministry to the whole parish, helping to lead the church family forward. Their wider role will be dictated by their gifting and passion in a more specific area of ministry. Examples of areas this might include would be pastoral care, community outreach or evangelism, amongst others.

The role has a long history of focus at St Andrew's, Tiptoe, by dint of the house's location adjacent to that church; it is anticipated that the incoming minister will continue to oversee and care for that church and wider village community as a priority, but with a clear ethos of sharing ministry with the incumbent across the parish that involves regular involvement in all areas of parish life.

Our prayer is that God will provide an Associate Minister who:

Spirituality

Is a person who shares our evangelical ethos, whose life is shaped by obedience to the Father's will revealed in the Bible, resting in the grace of Christ's salvation won on the cross, confident in the transformative power of the Holy Spirit dwelling in them. This faith shows itself in the candidate's commitment to prayer and scriptural study, both in private life and public ministry.

Worship and preaching

Is a person with a heart for outreach and evangelism.

Is a faithful and inspiring Bible teacher.

Is a pastor who can relate well to the church family and the wider community.

Respects the range of worship in the parish from traditional to contemporary, with an appreciation of how different 'styles' can be employed to draw in newcomers and encourage regular worshipers.

Collaboration

Has good communication skills and is able to work with the incumbent and the team of existing retired clergy and laity encouraging their gifts for service.

Can effectively manage their time and priorities and realistically manages expectations.

Discipleship, Learning and Nurture

Is committed and gifted in helping God's people grow in faith and use their gifts in God's service.

Will actively encourage home groups and others in their discipleship.

Evangelism and engagement with social justice

Is proactive and persuasive in sharing their faith with others and can enable others to gain confidence to do the same.

Will encourage the existing relationship between the church and local schools.

Pastoral Care

Is approachable and sensitive to the varied pastoral needs of our church family and wider community, sharing the responsibility of care with our pastoral team.

Stewardship and Parish Organisation

Encourages generosity of church members, in the giving of their time, talents and money, as a core aspect of discipleship.

Brings and displays the proven ability to plan, organise, manage, and communicate effectively with the clergy team, lay leadership, Churchwardens, PCC and Parish Office.

Personality

Is a person with a sense of humour, is approachable, and empathises with both young and old.

The role description should always be read in conjunction with the [Guidelines for the Professional Conduct of the Clergy](#).

HOW TO APPLY



A full application pack, along with Terms & Conditions, is available from the Diocesan website, [here](#).

For an informal conversation about this vacancy contact

The Rev. Phil Mullins

vicar@hordleandtiptoechurch.org.uk

The Rt Revd Debbie Sellin

Bishop of Southampton 01962 737315

Bishop.Debbie@winchester.anglican.org

Jane Hammond

Clergy Appointments Assistant 01962 737310

Clergy.appointments@winchester.anglican.org

Appendix 1

Pattern of services

St. Andrew's

1st Sunday

10.00 Morning Prayer

2nd Sunday

10.00 Morning Prayer + HC

3rd Sunday

10.00 Morning Prayer

4th Sunday

10.00 Morning Prayer +HC

5th Sunday

United service



All Saints'

1st Sunday

9.00 Morning Prayer + HC

10.30 All age worship

2nd Sunday

10.30 Contemporary worship

3rd Sunday

9.00 Morning prayer + HC

10.30 Contemporary worship

4th Sunday

10.30 Contemporary worship

5th Sunday

United service

A Parish online service is also available every week

All Saints'...A worship band made up of singers and instrumentalists lead the Contemporary Service. The organ or keyboard accompany hymns for the 9:00 service

St Andrew's.....The worship is led by an organist and choir

Every year one of the Sundays is dedicated to each of the 4 Mission Societies we support

Maundy Thursday – we have a parish meal.

Good Friday – 10:00 am All age event at All Saints
12:00 a Service of Meditation at St. Andrew's

Remembrance Sunday – A village Act of Remembrance at the Hordle war memorial follows a church service at All Saints.
A Remembrance service is also held at St. Andrew's Tiptoe.

Advent Sunday – St Andrew's hold a service of Light

Christingle – held at All Saints'

Celebration of Life – an annual service of remembrance is held to remember those we have lost

Appendix 2

Church Halls

All Saints'

The Memorial Hall was built in 2005. It has a large hall that holds 170 seated or 108 with tables, kitchen and offices on the ground floor and a smaller hall that holds 60 seated and kitchen upstairs.

It is used daily for activities organised by the Church and the local Community.

The Parish office is located in this hall.

St Andrew's

The hall was built in 1996 and holds 40 adults + 20 children seated. It has a hall, kitchen and office.



Appendix 3

Current areas of Ministry

Lent talks
Small groups
Quiet Garden
Prayer Ministry

Little Angels (parent and toddler group)
Kid's club (Sunday morning at All Saints')
Rooted Youth club (years 5 & 6)
Luncheon Club and Tea@3 (for older folk)
Men's Breakfast
Churchyard working parties
Walking and golfing groups

Administrative team
PCC
Standing Committee
Worship band at All Saints
Choir at St. Andrews
Hall management committee
Mission committee
Finance committee
Eco church
Pastoral team – visiting, funeral teas
Bell ringing
Links with Hordle Community Association
Church involvement at Hordle summer festival
LINK magazine

Church members are involved in many aspects of village and community life.

