



# Associate Priest

The Benefice of Thorngate and Blackwater

In the deanery of Romsey



## INDEX

Page	Title
3-4	Welcome
5	Introduction
5	Our Vision
6-9	Our Church Life
10-11	Our Team
12	Our Organisation
13	The House
14	Role Description
16	Appendix



## WELCOME

Thank you for your interest in coming to work in the Diocese of Winchester where we are committed to serving people and communities across Hampshire and East Dorset. Our vision is to 'Live the Mission of Jesus' and in doing so we want to make a difference and see lives transformed through the love of God.

We serve a range of diverse communities, from rural to urban, with our Cathedral being sited in the historic city of Winchester. From coastal Bournemouth to Andover, Southampton to the villages around Basingstoke, ministry takes place through our churches, chaplaincies and schools and we are delighted to encourage lay ministry in all its varied forms.

We are also committed to being a truly representative diocese and we recognise our need to develop in diversity. We welcome applications from the full range of those under-represented amongst us.

The Diocese of Winchester is an exciting place to be and we look forward to receiving your application.



Debbie Sellin  
Bishop of Southampton





**Welcome to Romsey Deanery!**  
***Sharing God's Life across the communities of mid-Test Valley***

Romsey Deanery is in the Bournemouth Archdeaconry. The Deanery connects the Southampton area, with the Andover area and runs along the Test Valley which includes the Waitrose farms, trout farming, mixed farming and a brewery! The Deanery mainly comprises multi-parish rural benefices, with one suburban parish (on the outskirts of Southampton) and the market town of Romsey with its historic Abbey.

We are a friendly and active Deanery. The clergy meet monthly for prayer and discussion. We have strong overseas links – especially in South Rwanda and Burundi. Synod and Chapter work together and are galvanised around delivering the Diocesan Strategy – working together where we can with each other and supporting each other. We run courses together, for all the Deanery. You can find a bit more out from our developing website [www.romseydeanery.org](http://www.romseydeanery.org)



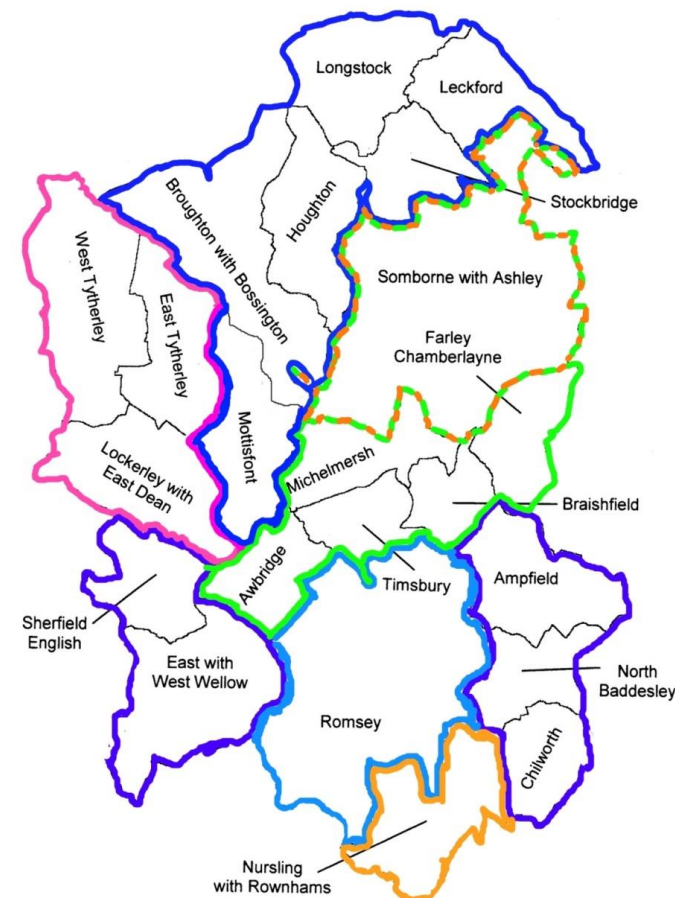
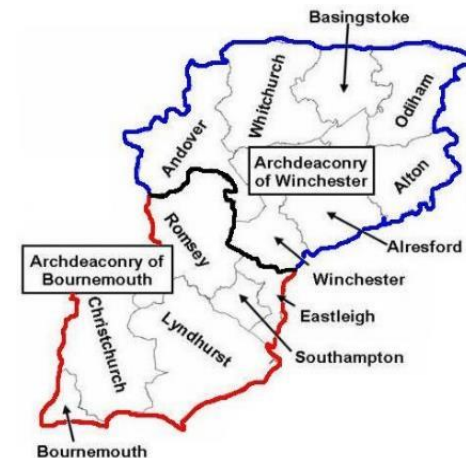
**Revd James Pitkin**  
**Area Dean of Romsey**



**Revd Vanessa Lawrence**  
**Assistant Area Dean of Romsey**



**Sarah Boothman**  
**Lay Chair of Romsey**



## INTRODUCTION

The Thorngate and Blackwater Benefice was formed in 2023 under a Pastoral Scheme bringing together the two benefices of 'Thorngate' and 'East with West Wellow & Sherfield English'.

Through the new Mission Action Plan, the people of the parishes seek to:

- Develop an understanding of 'every person ministry'
- Develop a co-ordinated Pastoral Care Programme across the new Benefice
- Develop the effective engagement with children and youth
- Develop and implement a co-ordinated Mission and Evangelism programme across the Benefice
- Develop and implement a Christian Stewardship programme
- Develop an effective Benefice co-ordination model to share best practice across the Benefice



Little Fishes – a “Fresh Expression”

## OUR VISION

All of the parishes share a common vision: to Share God’s Life across all of our communities. For several years we have been praying:

*Loving God, we give you thanks for our parishes – for their diversity and richness. We thank you for faithful people who have built, sustained and shared the faith over the centuries. Grant us your wisdom to share your gospel with all who live in these parishes. Give us grace, and help us to seek you, that all we do will be for your kingdom and your Glory. We ask this through Jesus Christ our Lord. Amen*





## OUR CHURCH LIFE

**St Leonard's Church** is one of the main hubs of village life in **Sherfield English**, since the village itself is geographically spread out and lacks a central focal point. The village (population 600) is traditionally a farming community but supports several long-standing businesses including a garden centre, a caravan park and Well-Being centre, a petrol station, two tearooms and a thriving pub (next to the church!). Community is very important within the village and especially to the church, where the congregation generally welcomes a more relaxed but still traditional form of worship. Alongside its regular worshipping community, St Leonard's welcomes a good number of occasional visitors to its celebration services, especially at Christmas and Easter. Monthly coffee mornings help to keep in touch with the less regular visitors, and the church is fortunate to be supported in a number of larger fundraising enterprises. In the past these have included Wartime concerts, Strawberry Teas in local gardens, Craft Fairs and 'Woollen Woods', which showcased the talents of the village's many knitters. Performative elements have recently been introduced to regular services, which emphasise the congregation's relaxed and fun-loving attitude to worship. While the lack of a village school has made it harder to attract young members of the congregation, families are always welcomed and several of the younger adults now attending church have been coming since their school days. We are blessed with an active church choir and music is very important within our services and much appreciated by our congregation (or so they tell us!). As one of few parish churches to have a full peal of eight bells, we are also fortunate to have an active bell-ringing team and to attract visiting bell-ringers from across the area.

As St Leonard's joins the new Thorngate and Blackwater benefice, we hope to continue to support our village community and to provide happy and uplifting services to our regular worshippers. We look forward to working with the ministry team (which includes our two churchwardens, recently trained) to keep the church alive as a focus of God and family life within our village.



**West Tytherley** is an ancient rural village which has been an important settlement within a single land-holding, dating back to medieval times, but more recently defined as the Norman Court Estate. The population is 600.

The self-supporting small rural community, distant from towns, was linked by droves, byways, and navigable waterways. Today, the road infrastructure connecting the villages and surrounding areas consists of unclassified, unnumbered roads with limited capacity. Dean railway station, located in the neighbouring village of West Dean, provides a regular local service between Salisbury, Romsey, Southampton Central, Southampton Airport (Parkway), and Chandlers Ford.

Almost 50% of the neighbourhood area is agricultural land and approximately 30% (800 ha) consists of protected woodland. Social amenities include a CofE Voluntary Aided Primary School, a parish church, a village hall, a recreation ground, a village shop, and a pub. **St Peter's Church**, sits on a hill giving commanding views of the beautiful surrounding countryside. West Tytherley is a true village community and many people come to the church for community events - as well as Church Services. The Church has the Oldest Bell in the World (for full circle ringing) - recently restored to working order. Offering a mixture of modern and traditional services, West Tytherley Church is a great place for all.



The **Parish of Lockerley** has a population of about 1000. The village is centred on the two communities around Butts Green and Lockerley Green and has several outlying hamlets; St John's church lies between the two main communities. The housing in Lockerley is mixed with both low cost rented accommodation and more expensive dwellings. The modern vicarage, in this geographically central parish, is situated in the heart of the Butts Green community. Lockerley Church of England Voluntary Aided Primary School, the Village Hall and garage are on Butts Green while the shop, Baptist Chapel and Greenview Rest Home are on Lockerley Green. Lockerley is an active and friendly village with many organisations including Scouts, Guides, a Lunch Club, a preschool playgroup and a Silver Band that supports the Remembrance and Harvest services with their music. The village hall is very well used – and not long ago the Church led in establishing a twice a week Coffee Shop (coinciding with the Outreach Post Office). Lockerley also led the way in the area with establishing a First Responders unit. Lockerley plays an active part in the Thorngate Villages Care Group (covering the Thorngate parishes).





Lockerley has a good mixture of services – a Midweek Communion and a service every Sunday at 1030am. Half of these services are Eucharists with a robed choir and half are Services of the Word - led by members of the Benefice Ministry Team along with a 'Band' once a month. Lockerley (CofE) Primary School use the church for termly services (which the children lead) and consider it 'their church'. **St John's Church** is late Victorian and has enough space to cater for the most popular services. It is well maintained and there is an enthusiastic (and good!) band of bell ringers who ring before the main Sunday services. The church's finances are sound with many of the congregation paying through planned giving. The CMF/Parish Share has consistently been paid in full. At the end of 2021 Lockerley PCC recombined with East Dean PCC



**East Dean** is a very small village with a population of about 200 and a worshipping community of 13.4! The church (**St Winfrith's**) is late Saxon and has recently benefited from a substantial refurbishment with the intention that it should be 50 years before any major work is needed. The services are weekly and traditional (Book of Common Prayer), which seems to attract some worshippers from outside the village. The Church is a Corporate Member of the Prayer Book Society.



The churches in the Thorngate benefice are reasonably close-knit, probably to the credit of James Pitkin, so we do join various benefice activities including: Lent lunches; helping in the Lockerley Coffee Shop and distributing the Benefice Newsletter and Welcome Packs for new arrivals.

The church is quite small but is the only public building in the village. It does host other activities including Parish Council Meetings, a Community Council Carol service (in addition to our own) and we regularly have a cultural event linked to the Romsey Festival. We have in the past had Flower Festivals, History Exhibitions, and concerts – sometimes as part of the Romsey Festival. The churchyard is managed to green initiatives and has noticeable wildflowers (registered with 'Grow Wild'). At the end of 2021 East Dean PCC recombined with Lockerley PCC.



**St Peter's Church, East Tytherley**, is the 'church in the field' and has been the centre of the community (population 200) for hundreds of years. It is an interesting building, showing the influence of many periods. There is a real community feel to all of the services here - and the Summer Fete. Come to join, or be part of, East Tytherley - you would be most welcome. In 2012 a restoration of the organ was completed and gave a new 'lease of life'.





**Wellow** is a thriving village with a population of nearly 3,500 – a population larger than all the other parishes in the Benefice put together. There is a good range of shops, a primary school, many village societies, and two sports grounds. There are bus links to Southampton, Salisbury and Romsey. Part of the parish sits in the New Forest National Park and it is a popular area for dog walkers and horse riders. Most of the population live in West Wellow, where the modern Vicarage is located close to shops and bus routes. The residential areas are largely inhabited by professional and managerial folk working in the Southampton-Winchester economic area.

St Margaret's Church, in East Wellow, established in 1215, the year of the signing of Magna Carta, has been a place of worship and pilgrimage for over 800 years. It is a Grade 1 listed building and is famed not just for its medieval wall paintings but also as burial place of Florence Nightingale. Embley Park (now a private school, for 2-18yr olds) is the former family home of Florence Nightingale. The Florence Nightingale link attracts many visitors from all over the world. The annual celebration of Florence Nightingale's birthday honouring her Christian life and service is held at St Margaret's each May and is attended by military and civilian nursing groups. The church has an excellent organ and small but committed choir. We maintain a conventional pattern of services with a regular Holy Communion each Sunday. Each year special services include All Souls, a Community Carol Service and seasonal festival services supplementing the traditional pattern of Anglican worship in the parish. There are 5 non-conformist chapels in the Parish with whom there are cordial relations.

St Margaret's is an active church and has a central role in the community of Wellow. Members of the congregation are involved in many village societies including the village Monday Lunch club in the village hall, the HELP group, (providing transport for medical visits). There is an active Church Flower Group which organises occasional Flower Festivals. St Margaret's itself organises Lunches every Tuesday and Coffee and Chat each Thursday morning in the relatively modern church rooms close to the church, as part of the church's service to the community. The church has good potential to expand its activities and to grow the congregation, including building on the links with the local LEA primary school and developing the relationship with Embley School. There is a good regularly updated website.

Like most Cof E congregations the average age of congregation has advanced but a regular weekly congregation of 30-40 has potential to expand with God's help especially with a House for Duty priest ready to help demonstrate the church remains committed to the village.



## OUR TEAM

### Rector – Revd James Pitkin

James has been the Incumbent of the Thorngate Benefice since June 2003. Formerly an Engineer in the Royal Air Force, he has enjoyed the variety of worship across many churches and work with the local schools. He is looking forward to the arrival of a new Associate Priest with the energy, vision, challenge and experience that comes with a new colleague



### Associate Priest (House for Duty) – You!

### Associate Priests (Volunteers) – Revd Joanna Percival and Revd Nick Flood



Both Joanna and Nick have spent time as Hospital Chaplains and now live near to, but not in, the Benefice.

*Nick Flood: “My quote to describe the Team and, indeed the wider congregation, is ‘Openness and Acceptance’ which is also an aspiration for the future”.*

*Joanna Percival*



### LLM/Reader – John Niblett

John has lived in the Benefice for a long time (former local Headteacher) and was licensed as a Reader in 2003. John, from time to time, takes non-eucharistic services in all the churches, more often than not, BCP. He enjoys singing tenor in the Lockerley choir and playing guitar in the band (COVID permitting). *“The team is very well organised, expectations are clear and everybody feels valued and supported. The church is a warm community and a ‘second home’.”*



### Lay Worship Leaders (Bishop’s Commission for Mission)

The Lay Worship Leaders take Services of the Word across most of the parishes and most have been in this role since 2005. They are: Andy Holton; Barbara Needham; Clare Durham; Fiona Collier; Greg McCann; Julia Barnett; Julia Noble; and Sally Masters. They bring with them a wide variety of life experience and current and former roles include: Teacher; Midwife; Police Officer; HR Consultant; Farmer; Carer; Chemist; and, ceramics specialist.

*The whole Ministry Team meets at least quarterly and the Priests and Reader also meet monthly.*

*Andy Holton: "I have been in the benefice for 40 years and appreciate that Christian witness within it plays out through a number of unifying activities. These include music at services and choir concerts, Lent courses, and the encouragement of Lay people to take more responsibility in worship and preaching. Outreach is pursued a number of ways, e.g. the visiting group, and the parent/pre-school children informal worship. There is potential for more engagement with younger people through regular and occasional church events."*



*Sally Masters: "Members of the worship team have very different styles of leading services, talks and intercessions. These are often lighter and more informal and that seems to appeal to some worshippers."*

*Julia Noble: "We try to keep St Leonard's as the heart of Sherfield English, to enjoy the community spirit and to give support to those who we live amongst."*



*Clare Durham: "During the vacancy at St Leonard's, Julia and I are supporting the current service pattern by leading services of Modern Morning Prayer - a practice we began in 2020 following the first lockdown. These services follow a relaxed pattern and include elements of community involvement in the sharing of a variety of readings and music alongside the traditional lectionary."*

*Julia Barnett: "Being part of an active, varied and relaxed worship team provides wonderful opportunities to serve the Benefice and wider communities while exploring and developing our own faith and learning from others."*



*Barbara Needham: "Over the years, the team has developed different styles of leading informal worship and talks. The music group (once a month at Lockerley) has been a great asset."*

*Greg McCann "We work together but James gives us a lot of independence within the framework."*



*Fiona Collier – also Churchwarden in West Tytherley*





# OUR ORGANISATION

## Governance

The Thorngate & Blackwater Benefice is a Benefice of 6 churches with 5 PCCs (East Tytherley; Lockerley & East Dean; Sherfield English, Wellow; and, West Tytherley). There is a Joint Council in place which has responsibility for the Benefice's Mission and Ministry. The individual PCCs bear the responsibility for their buildings and payments to the Common Mission Fund (Parish Share).

## Finances

For this role, it is expected that all expenses will be paid by the Thorngate & Blackwater Benefice. For information:

Parish	Worshipping Community (for 2022)	Population Numbers	2021 CMF Request	2021 CMF Paid	2022 CMF Request	Benefice Expenses 2021
East and West Wellow	59	3400	33652	24000	33356	2400
Sherfield English	15	600	9086	4086	9654	600
<b>Benefice Total</b>	<b>74</b>	<b>4000</b>	<b>£42,738</b>	<b>£28,086</b>	<b>£43,010</b>	<b>£3,000</b>
East Dean	14	200	7291	7291	33787	766
Lockerley	45	900	24229	24229		2756
East Tytherley	15	200	6104	6104	7753	766
West Tytherley	33	600	21070	21070	19548	1837
<b>Benefice Total</b>	<b>107</b>	<b>1900</b>	<b>£58,694</b>	<b>£58,694</b>	<b>£61,088</b>	<b>£6,125</b>
<b>Totals</b>	<b>181</b>	<b>5900</b>	<b>£101,428</b>	<b>£86,780</b>	<b>£104,098</b>	<b>£9,125</b>



Sherfield English Kneeler Making



Homeless Charity Fundraising at Wellow

# THE HOUSE

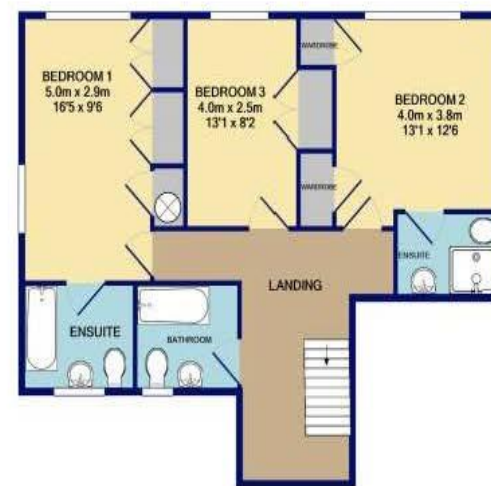
## Where you will be living:

- A modern spacious vicarage in the heart of a thriving village, good transport links, close to excellent range of facilities and schools on the edge of the New Forest with its own Ice Cream Parlour.
- In easy walking distance of three pubs, a pharmacy, two general food stores, a hardware shop, butchers and beauty parlour.
- Open fireplace, secluded tree and shrub lined back garden.
- Front garden with double garage and parking places.
- Sports facilities abound close by too: golf, tennis, fishing, cricket and in Romsey just over 4 miles away swimming.



GRO UND FLOOR  
APBA 136.9 SQ.M.  
(1474SQ.FT.)

(796 SQ.FT.) APPROX. FLOOR



1ST FLOOR  
APPROX.  
FLOOR AREA  
73.9 SQ.M.

TOTAL APPROX. FLOOR AREA 210.8 SQ.M. (2270SQ.FT.)

## ROLE DESCRIPTION

This Role Description should be read in conjunction with the vision, aims and priorities set out in this profile. In this role you will be a contributing and leading figure in the community of Wellow. The role is for a priest who will lead, support and nurture the inhabitants of these diverse parishes and build on recent achievements to develop the mission of the Church in the community and ensure pastoral needs are met, particularly in the Wellow community.

This House for Duty post has been designed to help facilitate the transition from two Benefices to a single Benefice. You will be licensed as Associate Priest to the new Benefice, while the Vicar of the Thorngate Benefice is licensed as Rector/Vicar. The expectation is that you will work closely with Rev James Pitkin, the Rector and Area Dean.

You will focus on the parish of East with West Wellow, leading Sunday worship at St Margaret's, as the benefice evolves its way of working together as a group of churches and communities. The post is predicated on you offering the equivalent of two days plus Sundays. Your residence will be the Vicarage in Wellow. (1 The Beeches, Slab Lane, West Wellow, Romsey SO51 6RN)

We are looking for someone who is:

- A team player and willing to work with colleagues in a collaborative way
- Eager to participate in community life
- Committed to a changing church, the flourishing and development of lay ministry and exploring how traditional patterns of ministry can be reshaped
- Flexible in leading a variety of service styles
- A caring person with good listening skills and pastoral sensitivity
- Content to fit in where needed – especially with Baptisms, Weddings and Funerals
- Happy to be travelling around – lots of driving or cycling! (Wellow is a large parish)

We are looking for a colleague to bring an extra “something” to the life of the Benefice during your season with us, to enrich the life of the Church here. We're open to suggestions! This post will suit someone who is able to give several years to ministry in a beautiful part of Hampshire, bringing a range of expertise, and who rejoices in meeting (not ‘meetings’) and working with diverse rural communities.

The role description should always be read in conjunction with the [Guidelines for the Professional Conduct of the Clergy](#).





## HOW TO APPLY



A full application pack, along with Terms & Conditions, is available from the Diocesan website, [here](#).

For an informal conversation about vacancies in the Winchester Archdeaconry please contact:

The Right Reverend Debbie Sellin  
Bishop of Southampton 01962 737315  
[bishop.debbie@winchester.anglican.org](mailto:bishop.debbie@winchester.anglican.org)

Jane Hammond  
Clergy Appointments Assistant 01962 737310  
[clergy.appointments@winchester.anglican.org](mailto:clergy.appointments@winchester.anglican.org)

# Appendix

## Pattern of Services

### Current Pattern of Services Across the Churches

	Midweek	1 <sup>st</sup> Sunday	2 <sup>nd</sup> Sunday	3 <sup>rd</sup> Sunday	4 <sup>th</sup> Sunday	5 <sup>th</sup> Sunday
<b>East Dean</b>	-	11am BCP Matins	9am BCP Communion	8am BCP Communion	6pm BCP Evensong	1030am Joint CW Eucharist
<b>East Tytherley</b>	-	-	9.30am Short but Sweet (CW)	11am CW Eucharist	-	
<b>Lockerley</b>	Weds 9am CW Eucharist	8am BCP Communion 1030am Service of the Word	1030am CW Eucharist	1030am Service of the Word	1030am CW Eucharist	
<b>West Tytherley</b>	-	10am Service of the Word	8am BCP Communion	9.15am BCP Matins	9.15am CW Eucharist	
<b>Sherfield English</b>	-	11am CW Eucharist	11am Service of the Word	11am Family Service	11am Service of the Word	Joint Service with Methodists
<b>Wellow</b>	-	9.15am CW Eucharist	9.15am CW Eucharist	9.15am CW Eucharist	8.15am BCP Communion 9.15am BCP Matins	-

‘From his fullness we have all received, grace upon grace.’  
John 1:16

Diocesan Office, Wolvesey, Winchester SO23 9ND

t: 01962 737310 w: [www.winchester.anglican.org](http://www.winchester.anglican.org)



@CofEWinchester



[www.facebook.com/CofEWinchester](https://www.facebook.com/CofEWinchester)