

CTiP (Common Tenure interim Post)
The Parish of Pennington
In the Deanery of Lyndhurst



INDEX

Page	Title
4-5	Welcome
6	Introduction
7	Our Vision
8	Our Church Life
9	Our Team
10	Our Organisation
11	The House
12-13	Role Description
14	Appendix



WELCOME TO WINCHESTER DIOCESE

Thank you for your interest in coming to work in the diocese of Winchester where we are committed to serving people and communities across Hampshire and East Dorset. Our vision is to 'Live the Mission of Jesus' and in doing so we want to make a difference and see lives transformed through the love of God.

We serve a range of diverse communities, from rural to urban, with our Cathedral being sited in the historic city of Winchester. From coastal Bournemouth to Andover, Southampton to the villages around Basingstoke, ministry takes place through our churches, chaplaincies and schools and we are delighted to encourage lay ministry in all its varied forms.

We are committed to being a truly representative diocese and we recognise our need to develop in diversity.

The Diocese of Winchester is an exciting place to be and we look forward to receiving your application.



The Rt Revd Debbie Sellin, Bishop of Southampton and Acting Bishop of Winchester



LYNDHURST DEANERY

The deanery has a mix of suburban, market town and village parishes and is located in the south of the diocese, within the archdeaconry of Bournemouth. The life of the deanery includes an active Synod and a friendly and supportive Chapter. We work together to find ways to enable all the people of our parishes to live out their calling in our shared mission and ministry and encourage all our stipendiary clergy to be active within the deanery so that their skills and gifts can be used to build up the whole deanery.



Simon Newham
Area Dean



Alison Bennett
Assistant Area Dean



Bill Andrews
Lay Chair



INTRODUCTION

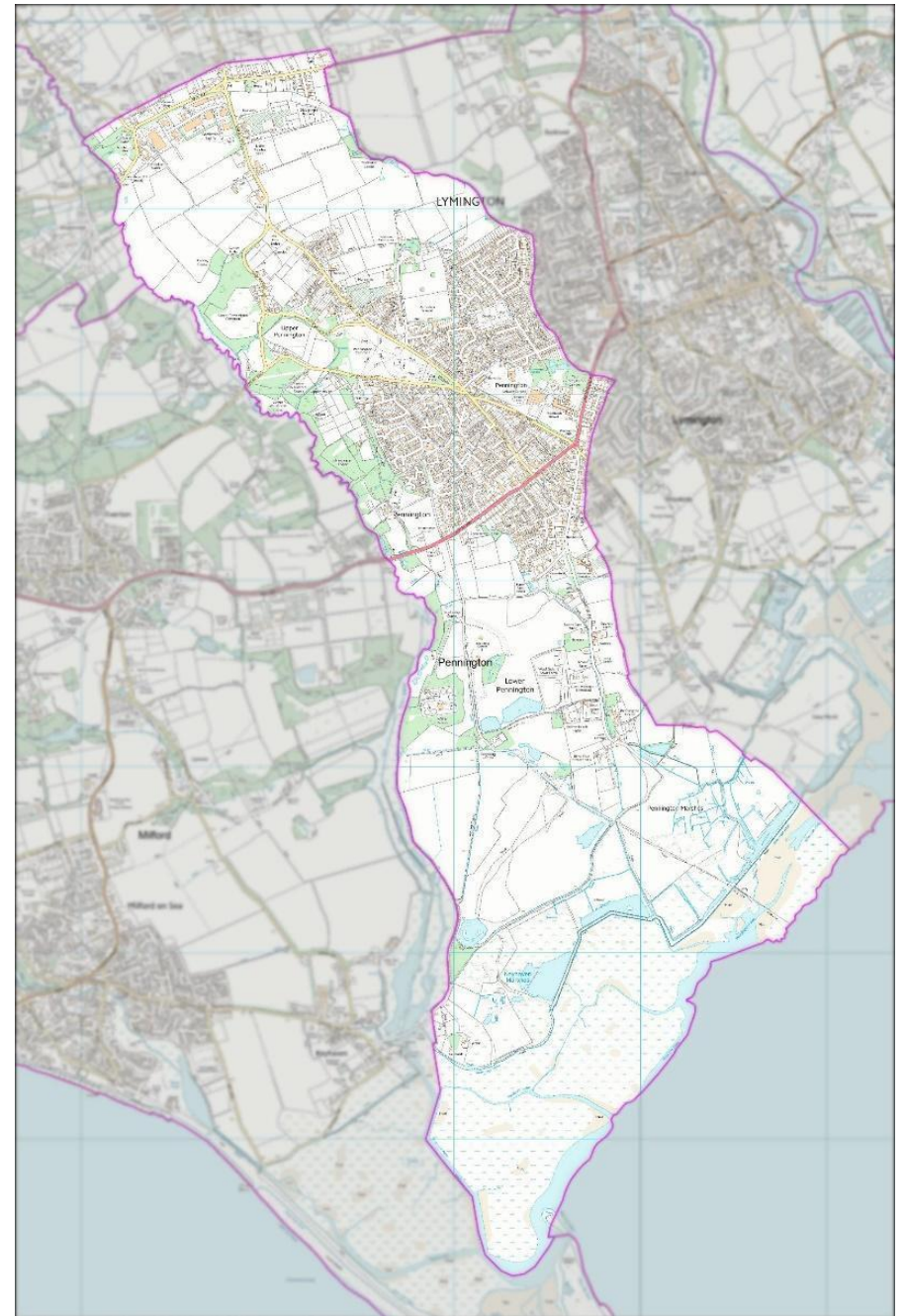
Our Victorian Parish Church of St Mark, Pennington, is a single Parish Benefice, being the only church in the centre of the village of Pennington, serving a small but expanding community of about 6,000 with a Church of England school at its heart. There are two small shopping centres for the convenience of the two areas of high population with many young families living near the centre of the village square.

The parish of Pennington covers rural and urban areas, with one side facing the Solent and the other within the New Forest national park.

The estimated population of the civil parish of Lymington and Pennington in 2020 was 16,303 with 25% over the age of 70 and 57% of working age. The population is predominantly UK-born with 73% of adults identifying as Christian but with 26% professing no religion.

Pennington is a small parish which has the potential to grow and develop with the right leadership and support. It is noted by the New Forest District Council that Pennington has been singled out as one of the deprived areas within the New Forest: despite the fact that we are surrounded by various affluent parishes – including Lymington, Milford, Sway and Brockenhurst. The people of Pennington are very attached to their church which features largely in the momentous events of their lives – especially baptisms and funerals. Many generations of the same families have chosen to stay in the area and can be seen supporting each other.

The PCC has worked hard to encourage development through BCMs and we now have an LLM in training. We are looking for someone who would be able to take our efforts further.



OUR VISION

At St. Mark's church in Pennington Parish, we are passionately committed to fostering an inclusive and nurturing community of faith, rooted in our shared Christian values. Our vision is to be a focus of love, hope, and spiritual growth, actively engaging with our parishioners and the wider community to enrich lives and create lasting connections.

Our key goals include:

- Working increasingly more closely with our neighbours at St Thomas Church in Lymington. Sharing gifts across increasingly blurred borders as Lymington and Pennington expand.
- Collaborating closely with our Church of England school to support the spiritual and moral development of the children, nurturing their innate curiosity and providing them with a strong foundation in faith. With a desire to work hand-in-hand with the school, we aim to create an environment where children are empowered to explore their beliefs and develop a personal relationship with God.
- Building meaningful relationships with baptism families, offering guidance and support both before and after the service. Through ongoing engagement and pastoral care, we seek to foster a strong sense of belonging within our church family, ensuring that each member feels valued, nurtured, and spiritually nourished.
- Focusing on the spiritual growth of our congregation, by providing opportunities for individuals to deepen their understanding of the Christian faith and cultivate a personal relationship with God. Through worship, prayer, education, and fellowship, we strive to create an atmosphere where faith can flourish and members are encouraged to grow in their spiritual journey.

- Encouraging the members of St. Mark's to use their unique gifts and talents to support the growth of the church and engage in outreach initiatives within the community. By equipping our congregation to serve others and share the love of Christ, we aim to extend our impact beyond the walls of our church, fostering a spirit of unity and collaboration in pursuit of our shared mission.
- Together, we envision a vibrant, compassionate, and spiritually thriving parish, where each individual is empowered to live out their faith in meaningful ways, and where our collective efforts serve to create a brighter future for our church, our community, and the world beyond.

St Marks' Pennington and St Thomas Lymington

For some time, the Diocese of Winchester has encouraged collaboration between St. Marks' Pennington and St. Thomas' Lymington. The PCCs of both Churches have voted on whether we would like to pursue closer collaboration with a majority in favour of investigating this further.

St. Marks' PCC is excited by the opportunities that could present in the future through exploring collaboration with St Thomas.

The priest-in-charge for St Mark's would therefore be involved with helping to move this vision forward, with the backing of both PCCs, where the two priests would work together to service both parishes of Lymington and Pennington.

This is not expected to be an immediate requirement as St Thomas find their feet with a new incumbent after many years with their previous vicar – but equally St Marks are keen to ensure these possibilities are explored.

OUR CHURCH LIFE

Being a welcoming Church to everyone is very important to us in the life and mission of our parish and our services try to cater for a wide variety of preferences. We offer a BCP Communion service, followed by a weekly alternating common worship service or an informal Morning Praise.

We have a small team of volunteers supporting our ministry, comprising of a Licensed Lay Minister (LLM) in training and one Lay Worship Leader. However we recognise our limitations and hope to encourage others in our church family to help us offer a wider range of services as we might like.

Discipleship & Spiritual Development

Our trainee LLM leads a weekly small study group, providing a place where people can deepen their faith, receive and give pastoral support, grow as disciples and explore their giftings together -encouraging each other to live as Christians in our rapidly changing world. Church members are encouraged to read the Bible regularly.

Young People

At present, we do not have the resources to offer specific services for younger members of our congregation. However, would like to explore the potential of restarting a Messy Church service within this parish - through continued relationships with St Thomas Church, Lymington.

Social

In the parish, we are proud to offer a diverse and engaging calendar of social events that foster camaraderie, friendship, and spiritual growth among our congregation. Our gatherings not only bring joy and warmth to our parishioners, but also serve to strengthen the bonds within our church family, ensuring that everyone feels connected and supported.

Our Friendship Tea, held once per month, provides a delightful opportunity for members of all ages to come together and enjoy an afternoon of conversation, laughter, and delicious refreshments.

Twice a month, creative souls can unleash their artistic talents at our Strictly Come Crafting sessions. These lively gatherings are the perfect place for craft enthusiasts to share their skills, learn from one another, and create beautiful handmade treasures in a fun and supportive environment.

For those who love the great outdoors and take pride in the beauty of our churchyard, our monthly Churchyard Maintenance Team offers the chance to tend to the grounds and contribute to the upkeep of our sacred space. This dedicated group of volunteers ensures that our churchyard remains a serene, picturesque haven for all to enjoy.

Our weekly Coffee Morning is a welcoming and informal gathering where parishioners can catch up with old friends and make new ones while enjoying a steaming cup of coffee and scrumptious treats. This event promotes fellowship and warmth among our members.

Finally, we invite all to linger after Sunday services for our Coffee and Chat sessions. These relaxed, post-service gatherings offer the perfect opportunity to continue the conversations sparked during worship, deepen connections with fellow churchgoers, and strengthen the bonds of our vibrant church family.

Outreach Programmes

We provide the space and volunteers to the local FareShare larder, on a weekly basis. We also offer home Communion services to local care home, Belmore Lodge.

OUR TEAM

There is a support team of the laity and churchwardens. Our standing committee members who work within and outside of the PCC are:

Teresa Nivison (Churchwarden / Treasurer)

I have lived all my life in Lymington and Pennington and used to work in accountancy – hence the role of treasurer! I've fulfilled this role as well as church warden for over ten years, and am currently vice-chair of the PCC. I've been a part of the St Mark's family for over thirty years and the future of our church is very important to me.



Teresa Nivison

Eve Jolly (Churchwarden / Safeguarding officer)

I am a retired science / dyslexic support teacher, having also been a church warden for a number of years. I have supported St Mark's for over 35 years, joining in Sunday School and later Messy Church, choir, churchyard maintenance and craft groups. Recently I obtained a BCM in Creation Care.



Eve Jolly

Rebecca Rickaby (PCC Secretary / Electoral Roll Officer / Pastoral Support)

I have spent over forty years in the UK, Europe and New Zealand in various administrative roles. Moving to Pennington in 2017, I have been an active member of the church in the choir (soloist for certain pieces) – taking on the role of PCC Secretary shortly after. I completed a BCM in Pastoral Care and spent two years exploring theology with Sarum College. I am also representing St Mark's at Deanery Synod.



Rebecca Rickaby

Paul Young (IT and online / Data Protection Officer)

Coming to faith by accident, having previously been a devout atheist, I joined the St Mark's family as part of being present to hear wedding banns being read. However, something clicked ...and I have played a role in the choir (fellow soloist as Rebecca is), IT support, the PCC and most recently BCM worship and taking this online via the setup of our YouTube streaming!



Paul Young



Leigh Jerwood

Leigh Jerwood is our Director of Music at St Marks and endeavours to provide music on the organ, keyboard & vocally for everyone's taste and enjoyment. Consequently the music at St Marks is a truly eclectic mix of genres. St Marks choir, although small, regularly sings during services and also entertains in the community. Leigh also works with several music groups and choirs who have given concerts in the church.

Our LLM in training, **Jane Nicholson** who has been an active member at St Mark's Church, Pennington for over 5 years – and is currently pursuing Licensed Lay Ministry Training with Winchester Diocese. Besides her dedication to worship and Psalm Drumming, she manages administrative duties at a nearby parish and runs a Zoom study group. While reducing some parish tasks for her studies, she continues serving her community, including her role at Waitrose.



Jane Nicholson

OUR ORGANISATION

Governance

Governance is provided by the PCC which meets several times a year. The PCC is currently made up of nine members, including two Deanery Synod members. The Standing Committee and PCC also take on administrative duties at present, where we do not have the finances to employ a parish administrator. This covers wedding, baptism, funeral and hall management.

The PCC has the responsibility of co-operating with the incumbent and ministry team in promoting the whole mission of the Church, pastoral, evangelistic, social and ecumenical. We endeavour to join and liaise with the other churches in the deanery in the pursuance of these objectives. The PCC has maintenance responsibilities for the church building (a Grade II listed building), as well as the St Mark's Community Hall and our churchyard.

There are 78 parishioners on the Electoral Roll across the parish. The average weekly attendance is between thirty and forty adults, but this number increases at festivals.

Baptisms are a popular offering with a large interest from the local community for their children. Covering key life events, weddings and funerals are likewise popular at St Mark's, with two weddings coming up later in 2023.

Finances

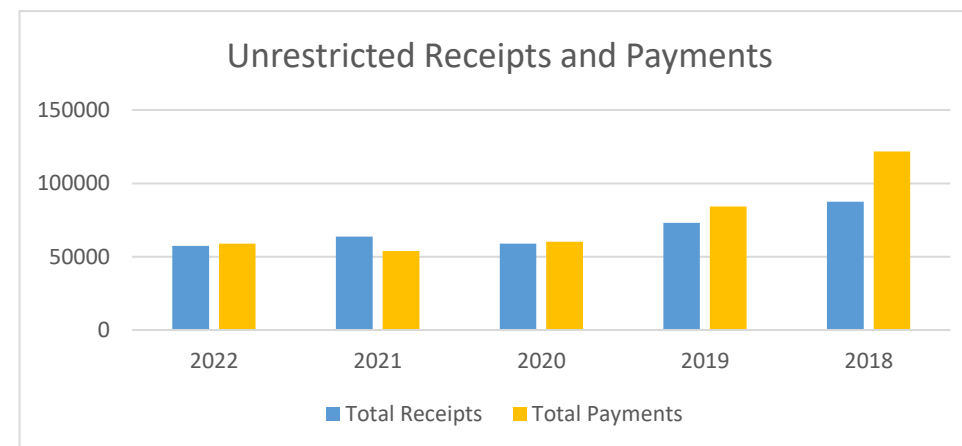
The annual budget is set by the PCC with fees and salaries also being set by the PCC.

The Common Mission Fund contribution is paid in full each year and clergy expenses are reimbursed in full.

The PCC has agreed a reserves policy that is intended to ensure that we can meet our commitments and deal with emergencies and opportunities, rather than build up large balances for unspecified purposes. The parish is supported by a small number of regular givers who provide the financial basis for our work: however, we hope to encourage others in our congregation to donate in this manner.

The buildings are each managed by the PCC with a responsibility for the fabric and management of the buildings and grounds, in order to facilitate outreach. The income from letting our community hall covers the running costs of the whole building.

We are facing a potential deficit in the current year, so are hoping to engage in a stewardship campaign once the new priest is in position. We hope to therefore encourage greater giving towards the work we do and to meet our Common Mission Fund fully in future years.

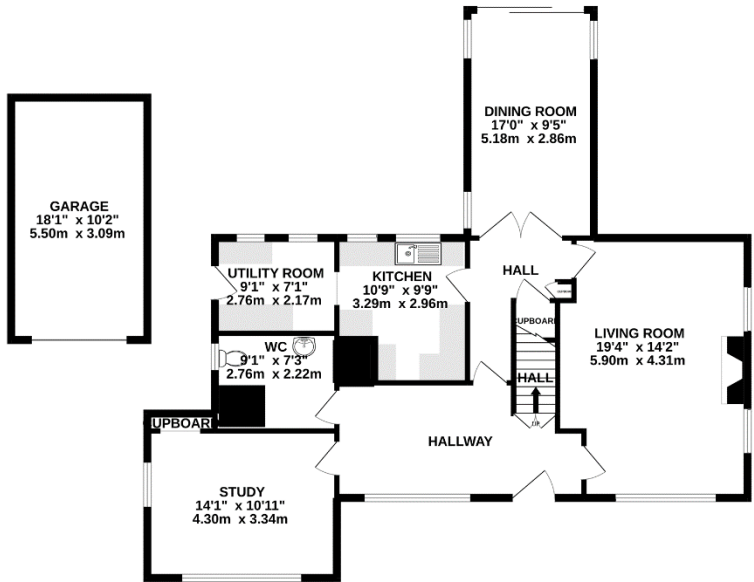


THE HOUSE

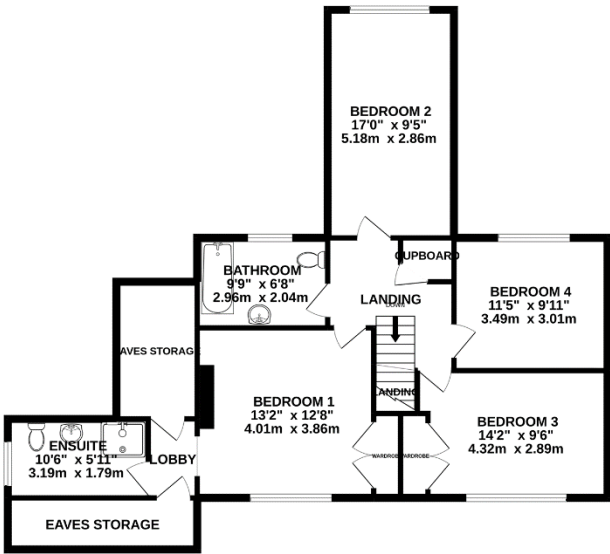
The Vicarage is a two-minute level walk down the road from the church and overlooks Pennington Common. It has a front garden, private rear garden and off-road parking. Inside there are 4 bedrooms (one en-suite), 1 bathroom and solar panels on the roof.



GROUND FLOOR
1198 sq.ft. (111.3 sq.m.) approx.



1ST FLOOR
945 sq.ft. (87.8 sq.m.) approx.



ROLE DESCRIPTION

We are seeking an enthusiastic and outgoing part-time Priest in Charge for a Common Tenure Interim Post (CTiP) at St Mark's Church. This role will be either on a House for Duty or 0.5 Salary basis, to be negotiated with the successful applicant.

Key Responsibilities:

1. Provide spiritual leadership and pastoral care to our congregation, including worship services, sacraments, and preaching.
2. Work closely with children and the elderly, ensuring that our church is inclusive and supportive to all age groups.
3. Engage with the local community, building relationships and fostering a sense of belonging among parishioners and the wider community.
4. Encourage the congregation to be more actively involved in church growth, increasing their support for outreach initiatives and evangelism.
5. Collaborate with the Parochial Church Council (PCC) to develop and implement programs and events that promote spiritual growth and community engagement.
6. Oversee the administration and organization of the parish, ensuring the smooth running of all church activities, including liturgical and pastoral duties.
7. Attend and participate in diocesan meetings and training events, maintaining a strong connection with the wider Church of England.

Key Qualifications and Skills:

1. Proven experience in pastoral care and spiritual leadership, with a strong commitment to serving the congregation and the wider community.
2. Excellent interpersonal skills, with the ability to engage with people of all ages and backgrounds, including the elderly and a focus on children.
3. Strong communication skills, both written and verbal, and the ability to deliver engaging and inspiring sermons.
4. A genuine passion for church growth and a track record of encouraging congregational involvement in outreach initiatives.
5. Ability to work collaboratively with the PCC and volunteers to achieve common goals.
6. A willingness to adapt to the unique needs of our parish and the flexibility to respond to the evolving needs of our congregation.

The role description should always be read in conjunction with the [Guidelines for the Professional Conduct of the Clergy](#).

HOW TO APPLY

A full application pack, along with Terms & Conditions, is available from the Diocesan website, [here](#).



For an informal conversation about vacancies in the Bournemouth Archdeaconry please contact:

The Rt Revd Debbie Sellin
Bishop of Southampton
01962 737315

Bishop.Debbie@winchester.anglican.org

Jane Hammond

Clergy Appointments Assistant *01962 737310*

Clergy.appointments@winchester.anglican.org

Appendix

Pattern of services

1st Sunday	08:00 – BCP Communion 10:00 – Contemporary Communion
2nd Sunday	08:00 – BCP Communion 10:00 – Morning Praise
3rd Sunday	08:00 – BCP Communion 10:00 – Contemporary Communion
3rd Tuesday	14:15 – Home Communions at Belmore Lodge
4th Sunday	08:00 – BCP Communion 10:00 – Morning Praise
5th Sunday	08:00 – BCP Communion 10:00 – Contemporary Communion

‘but speaking the truth in love, we must grow up in every way into him who is the head, into Christ, from whom the whole body, joined and knit together by every ligament with which it is equipped, as each part is working properly, promotes the body’s growth in building itself up in love.’

Ephesians 4:15-16

Diocesan Office, Wolvesey, Winchester

SO23 9ND t: 01962 737310

w: www.winchester.anglican.org



@CofEWinchester



www.facebook.com/CofEWinchester

‘To Love, To Serve, To Give, To All: in Jesus Name’