

Winchester Diocese
January 2024

growing
faith



To come away

- **informed** about Growing Faith
- **gleeful** about God's Spirit at work in Winchester Diocese
- **excited** by the direction of the Church of England
- **inspired** to prioritise cyp in your ministry
- **equipped** to know where to find resources and support
- **keen** to listen to cyp voices



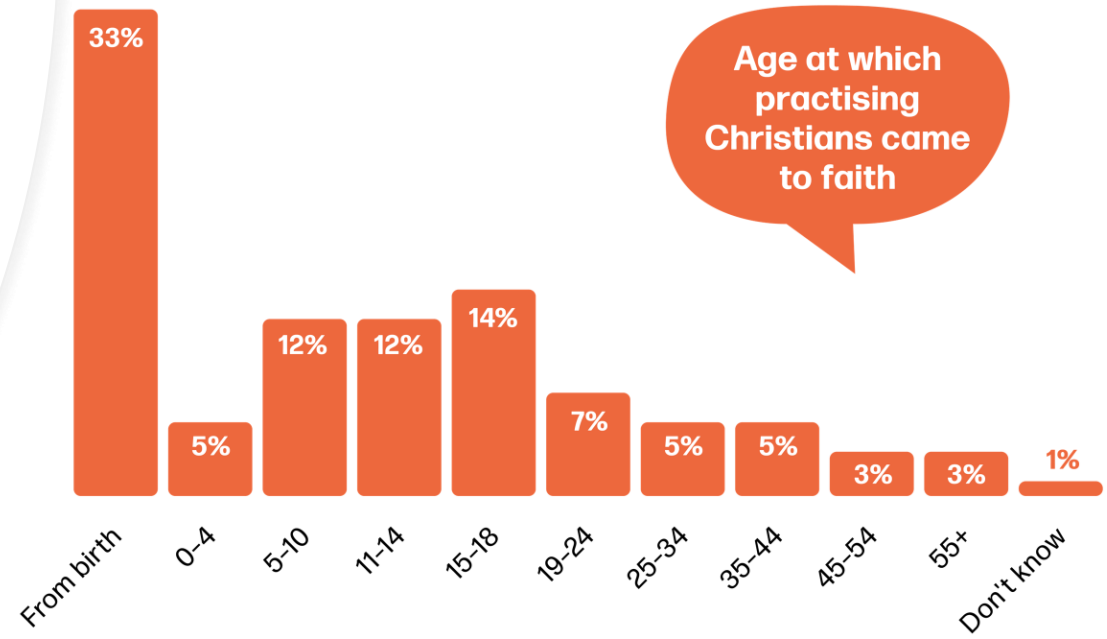


When you were young(er)....

What was your favourite toy when you were about 8?

Did you have a 'special place'?

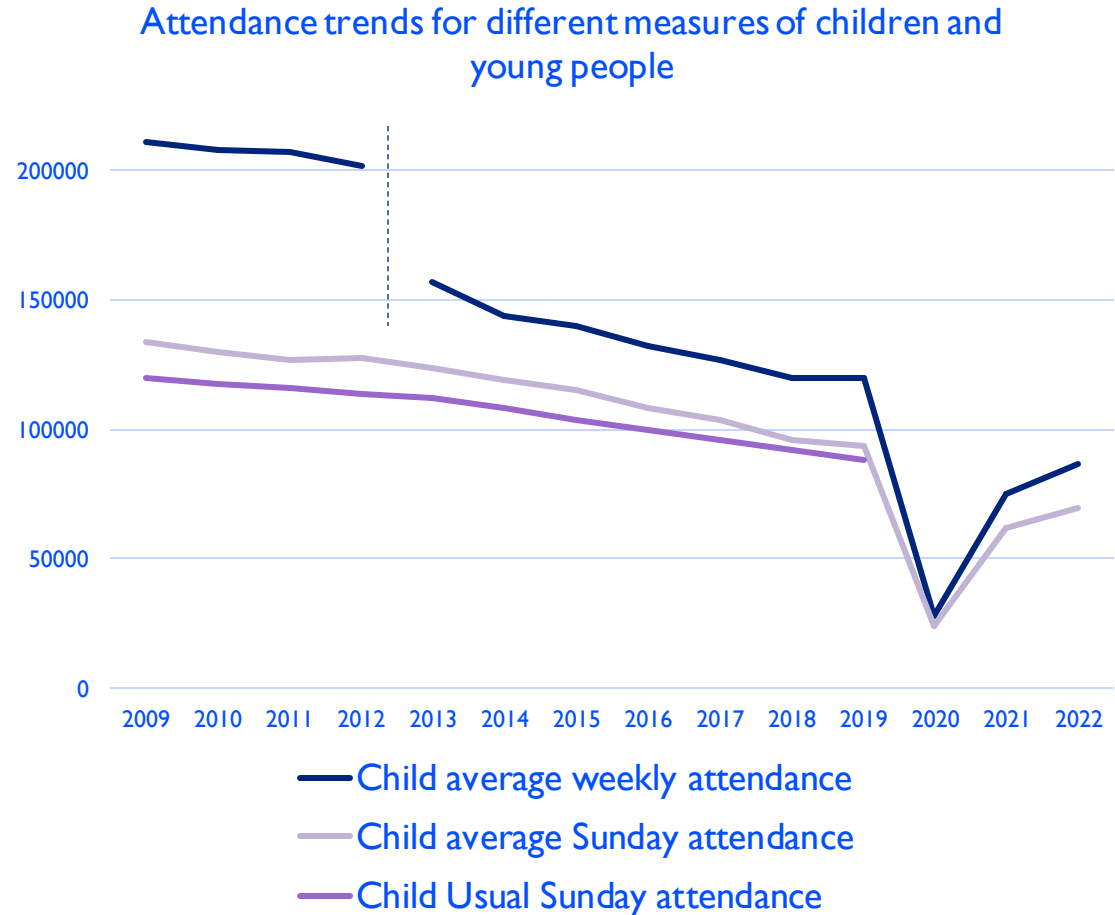
When do you first remember having a sense of the sacred?



growing
faith

The logo consists of three overlapping circles arranged in a triangular pattern. The top circle overlaps the two bottom circles, and the two bottom circles overlap each other. The circles are white outlines on a teal background.

Children and Young People Attendance Data



- Attendance across all measures has fallen starkly since 2014 by 40%
- Around half of the numerical decline has been seen since 2019, the year before the impact of the Covid-19 pandemic

This
machine
is for
grown ups
only

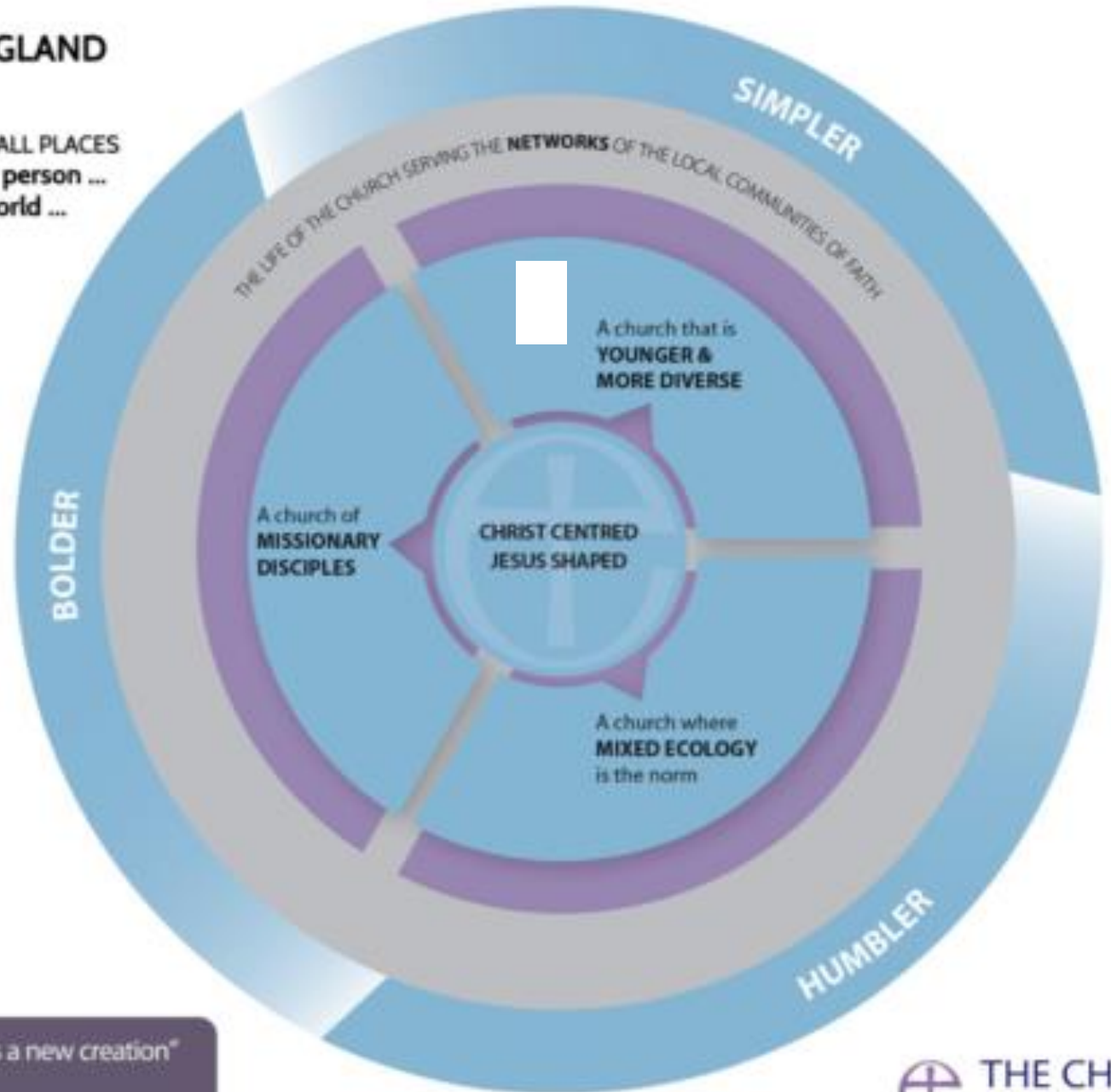


A kairos moment

A VISION FOR THE CHURCH OF ENGLAND IN THE 2020s

A CHURCH FOR ALL PEOPLE IN ALL PLACES
... a Christian vision for every person ...
... a Christian vision for the world ...

A perfect time to be someone who cares about children and young people!



"If anyone is in Christ, there is a new creation"
(2 Corinthians 5:17)



Home - church - school

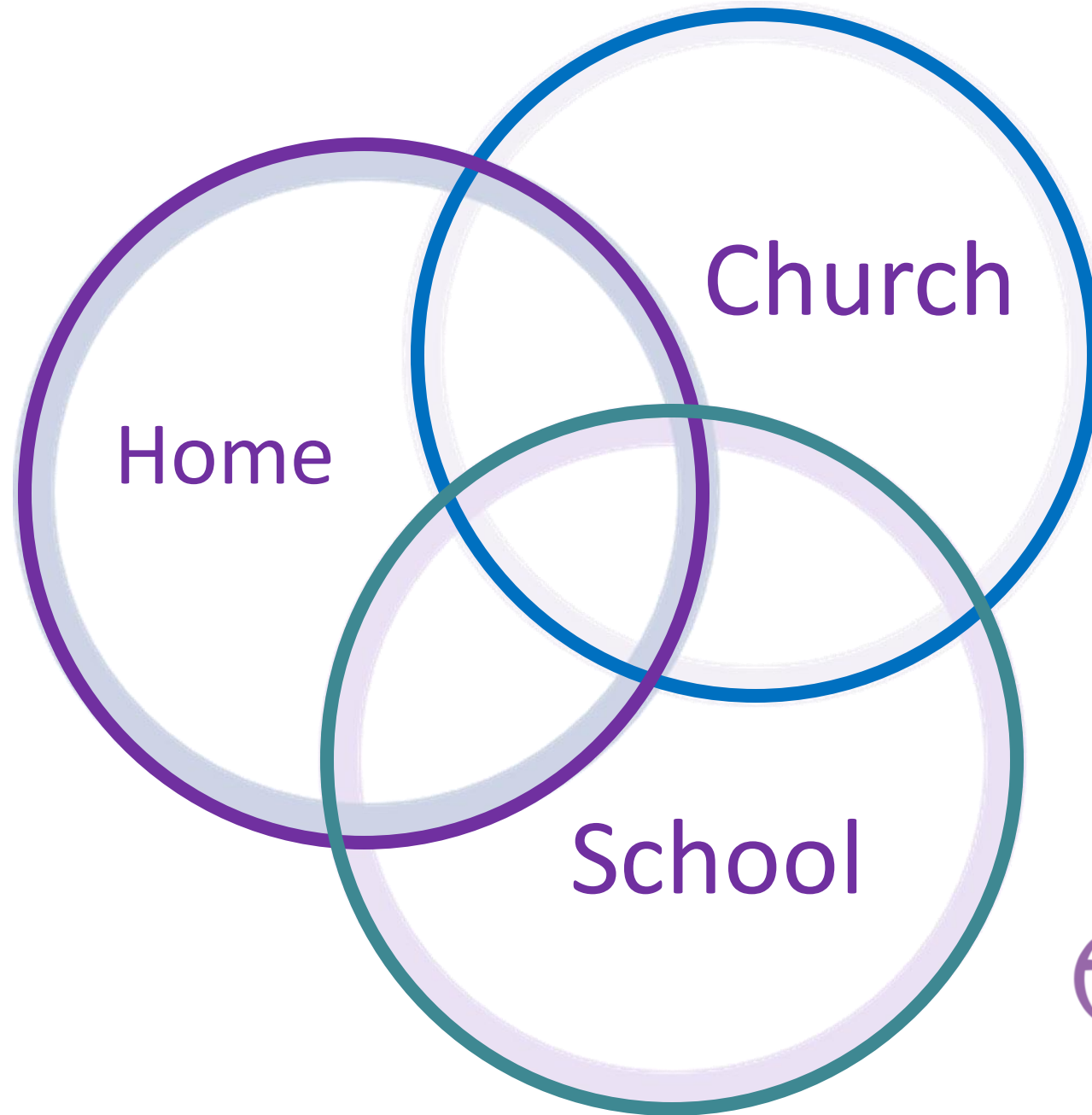
Growing Faith

Growing Faith is the movement that exists to change the culture of the Church of England so that everyone instinctively puts put **children, young people and families** at the heart of all the mission and ministry of the Church.

It involves **churches, schools and households** working **together** to help children, young people and families have life in all its fullness.
(John 10:10)

growing 
faith

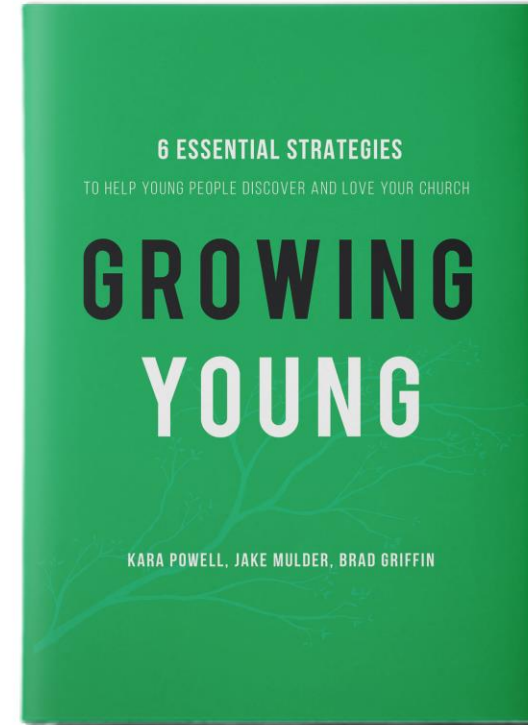
churchofengland.org/growingfaith



THE CHURCH
OF ENGLAND

GROWING FAITH

- Unlock keychain leadership
- Empathize with today's young people
- Take Jesus' message seriously
- Fuel a warm community
- **Prioritize young people everywhere**
- Be the best neighbors



Growing Young

Powell, Mulder, Griffin Bakerbooks 2016

There are around a million under-16s in Church of England schools

Jesus went....

As Jesus went on from there...

Jesus went out to them, walking on the lake...

These twelve Jesus sent out...

Jesus went out and saw a tax collector...

The Lord appointed seventy-two others and sent them two by two...

Jesus and his disciples went out into the Judean countryside...

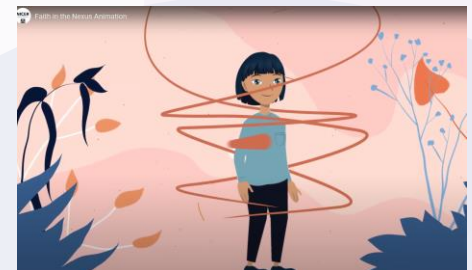
Go and make disciples....

Instead of staying grieving where they're
not, why not go out rejoicing to where
they are?

The research from NICER on which Growing Faith is based concludes that where school, church and home act together, a child's spirituality has the best chance of being nurtured:

- A strong relationship between church and the school has a strong association with attitudes and behaviours which facilitate faith-talk and interactions at home.
- Flourishing connections between school, home and church nurtures relationships between individuals and these institutions.
- Positive relationships between church and school are characterised by invitational worship, the celebration of festivals, the minister's presence, and a sense of belonging and connection to the church community and building.
- The powerful impact these positive relationships have on aspects of family faith life is mostly unseen but is apparent in the significance for church school families of their connection with the local church.

(p11 Faith in the Nexus Final Report 2020 [faith-in-the-nexus-final-report.pdf \(nicer.org.uk\)](https://www.nicer.org.uk/faith-in-the-nexus-final-report.pdf))



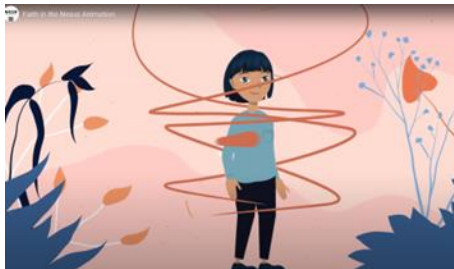
‘Positive relationships between church and school are characterised by

- invitational worship,
- the celebration of festivals,
- the minister’s presence,
- and a sense of belonging and connection to the church community and building.’

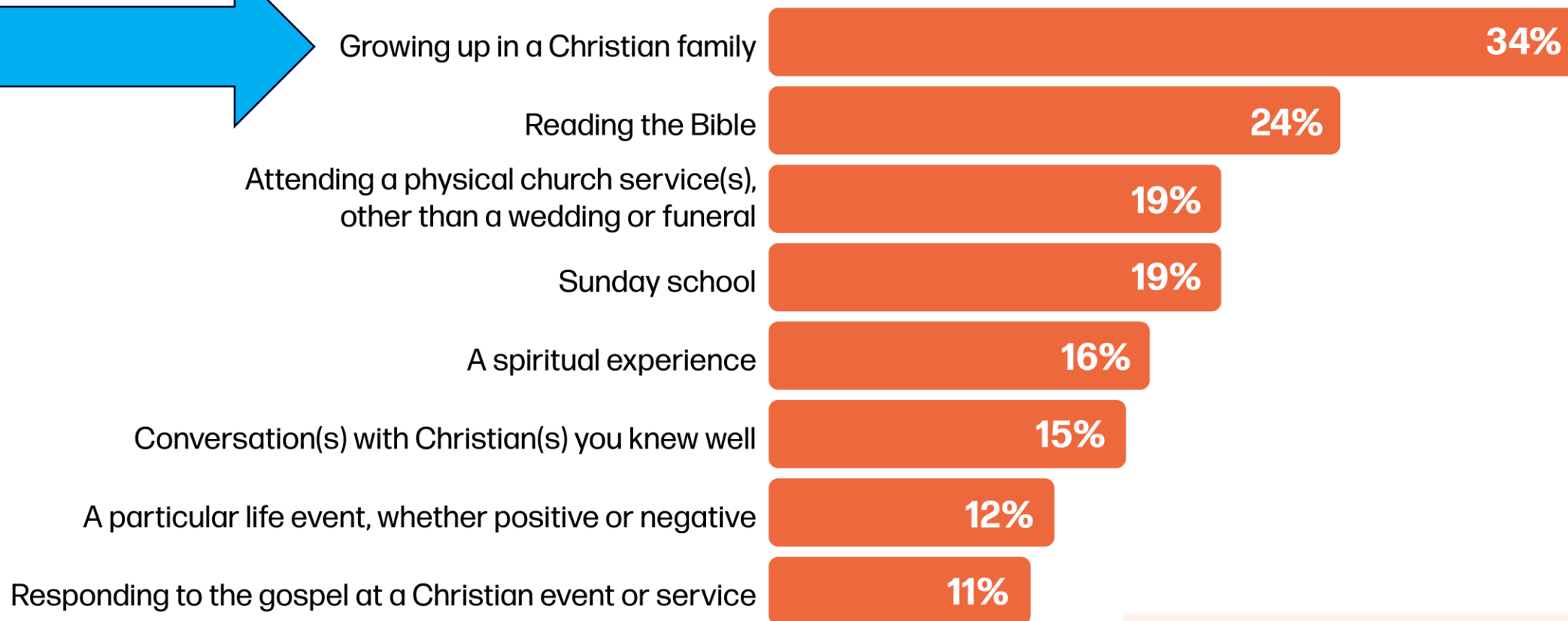
(Faith in the Nexus)

Where do you see any of these happening well in your context and/or elsewhere in the diocese?

What else would you add to the list?



How people come to faith



among practising
Christians

MULTI-NATIONAL
CHILDREN'S
MINISTRY REPORT
2021



DO WE NEED A NEW PLAN FOR CHILDREN'S MINISTRY?

The Multinational Children's Ministry Research indicates that children and young people's spirituality thrives through safe and close **connections with all generations.**

What opportunities do you have in your parish for even greater **intergenerational** relational connection?



The Growing Faith - Connections research suggests four fruitful ways forward to help children and young people's spirituality flourish:

Voices

(making space for the voices of children and young people)

Rhythms

(making the most of festivals and seasons)

Relationships

(creating connections for genuine community across generations)

Purpose

(doing worthwhile activities together)

What do you already do across ch/hh/sch that could be done even more intentionally through the lens of these four suggestions?

In your context, which of these is strongest and which is an area you would like to develop?



What the Growing Faith Foundation is doing 2022-3 to effect culture change

- ❖ Prayer
- ❖ Networks
- ❖ Hubs
- ❖ Programmes
- ❖ Research
- ❖ Church in school
- ❖ Podcasts and videos



Prayer

A short weekly email reminder to pray for children and young people and the work of Growing Faith

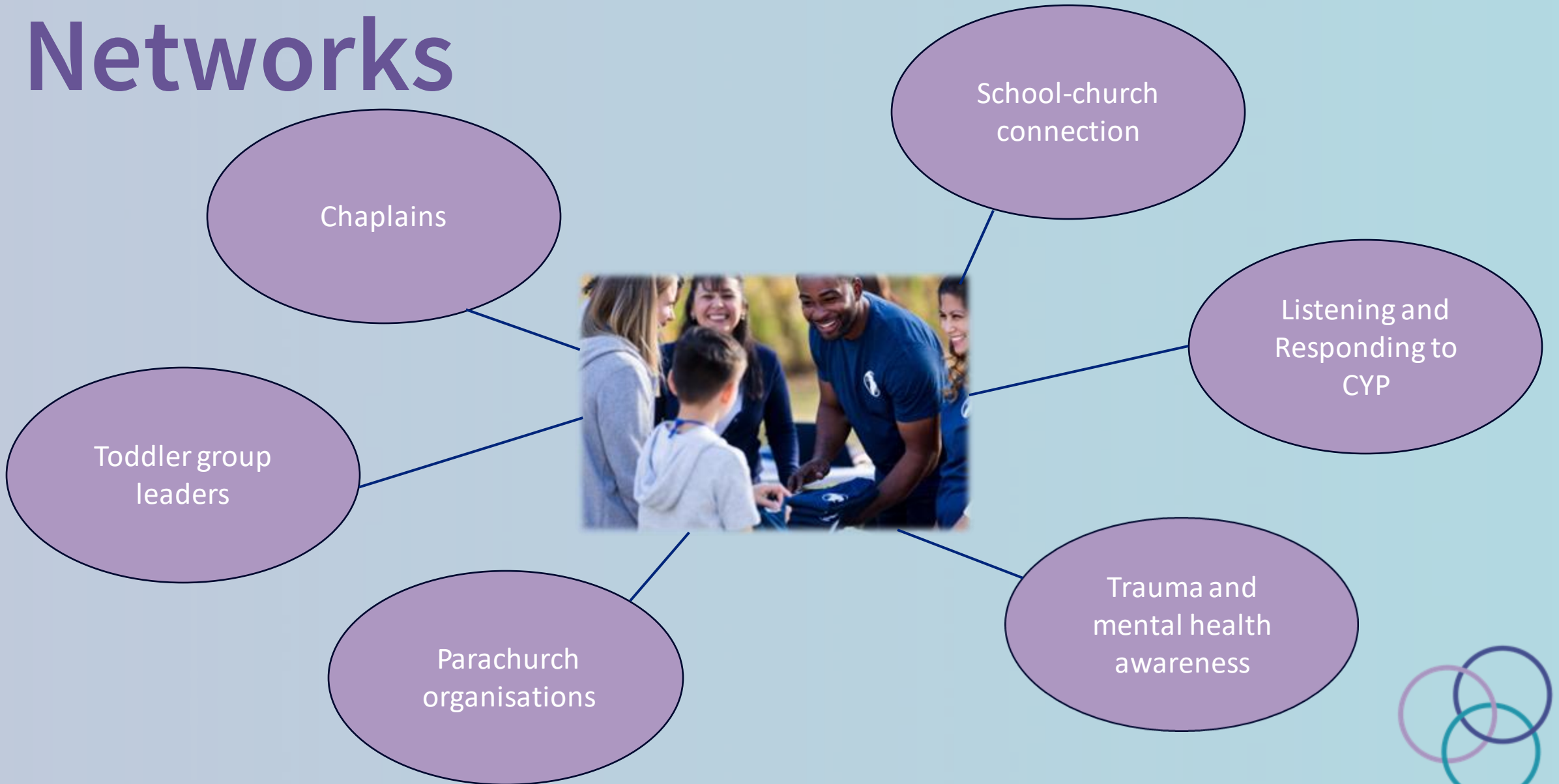
Tuesdays 1.00-1.20 on Zoom

Prayer for doubling the number of children and young people who are active disciples

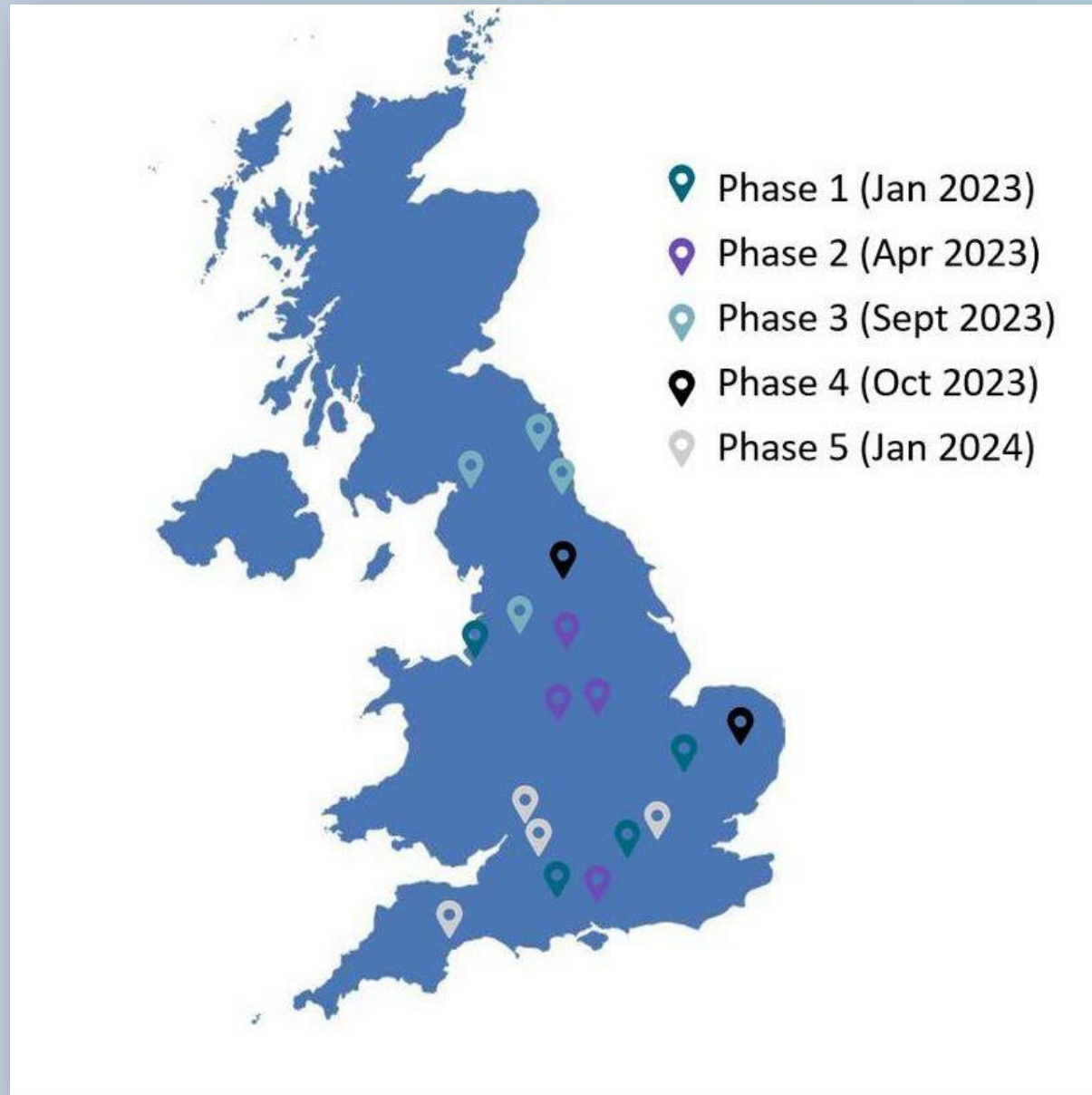
<https://cofe.io/doublecyp>



Networks



Hubs





STRATEGIC LEADERS' PROGRAMME



Any questions?

Email: stephen.beamond@churchopfengland.org

Register your
interest here



Programmes

Growing Faith Strategic Leaders' Programme

- Provide a space for a **collaborative learning community** which models the intersections of Growing Faith
- **Professionally develop leaders**, and aspiring leaders bringing sustained change in a range of contexts
- Have a **transformative impact** on children and young people's **faith formation**.



Research

Children and holiness

Let us pray... anywhere?

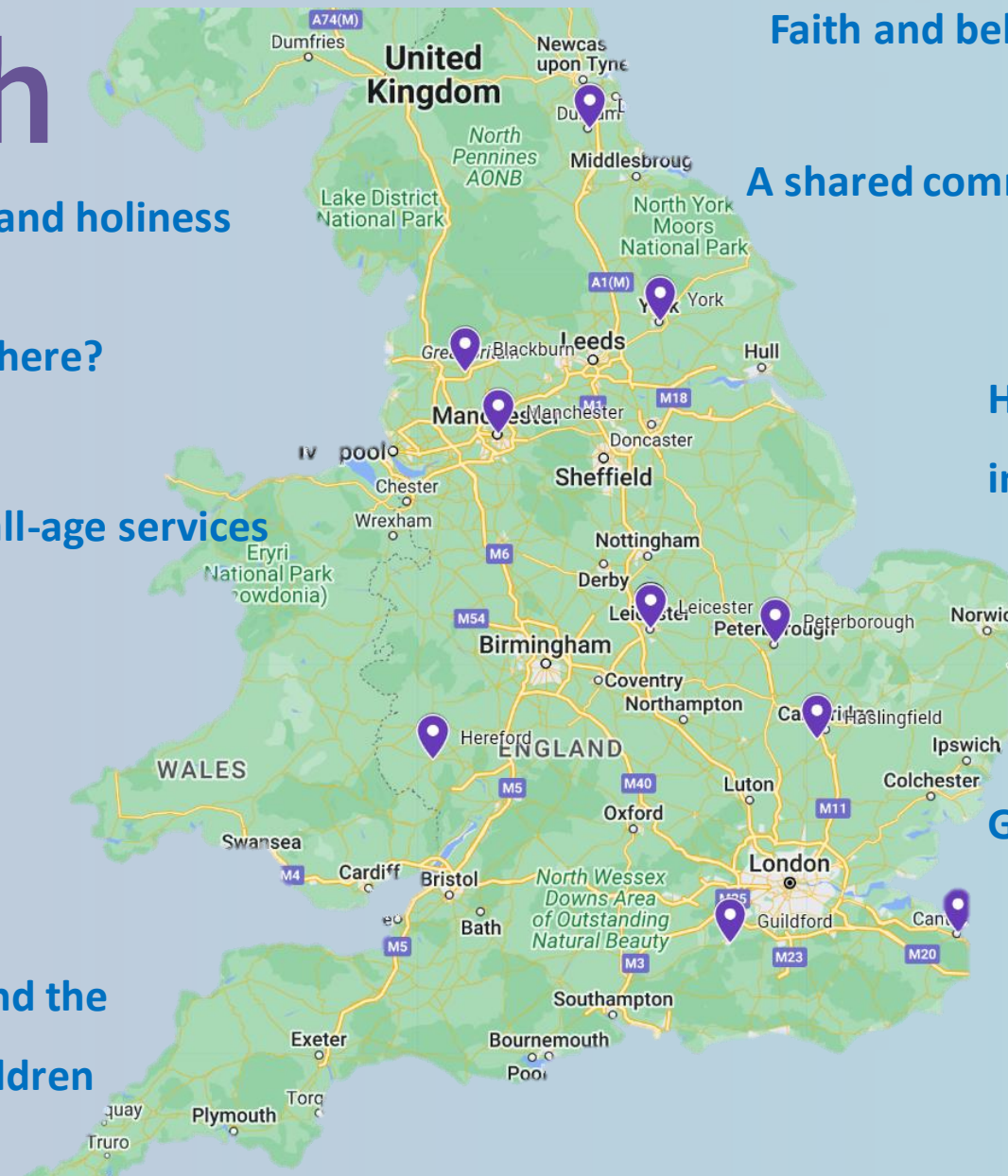
Intergenerational worship at all-age services

The change agents: children in spiritual leadership in schools

Are we listening?

Church/school partnership and the spiritual development of children

Finding and growing in faith: the voices of LGBTQ+ Christians



Faith and belonging in intergenerational church

A shared community of priests and headteachers for mutuality in mission

Happiness Club with church/school intergenerational cohort

Empowering parents

Growing Faith in Minster Communities

Faith in transition



FLOURISH

New worshipping communities in schools

Young people's voices are instinctively at the centre of all leadership decision-making and implementation

Clearly articulated and shared purpose to grow a **younger and more diverse** community of **Christian disciples**

Strategic leadership partnership between school/college and at least one church community (with appropriate long-term governance and resource commitment)

Intergenerational faith development experiences involving children and their families of all ages

Worship that is fully integrated into the regular rhythms, practices, structures and resources of the school/college's vision for flourishing of children and adults

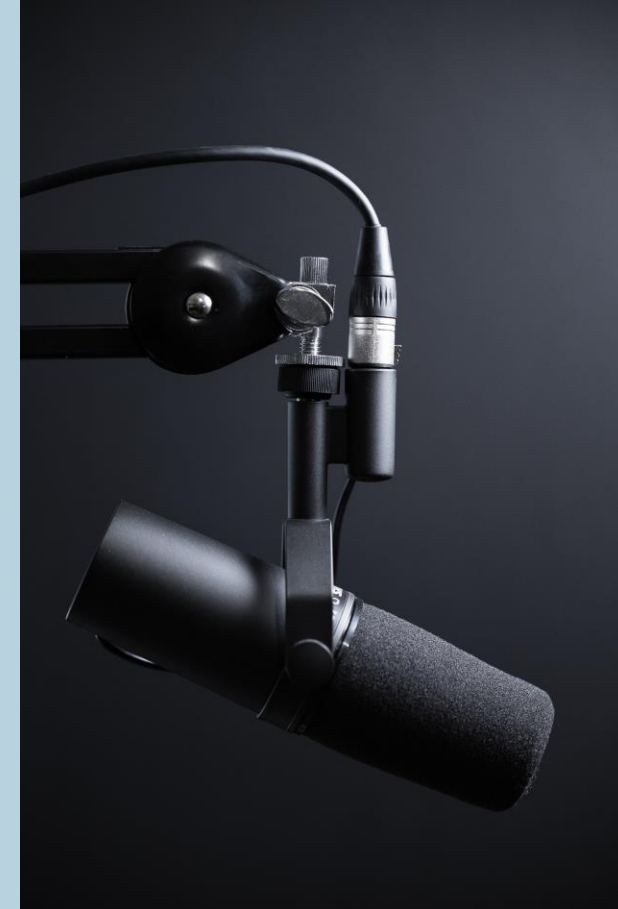


Videos and Podcast



Where do you feel close to God?

Who helps you learn about God?

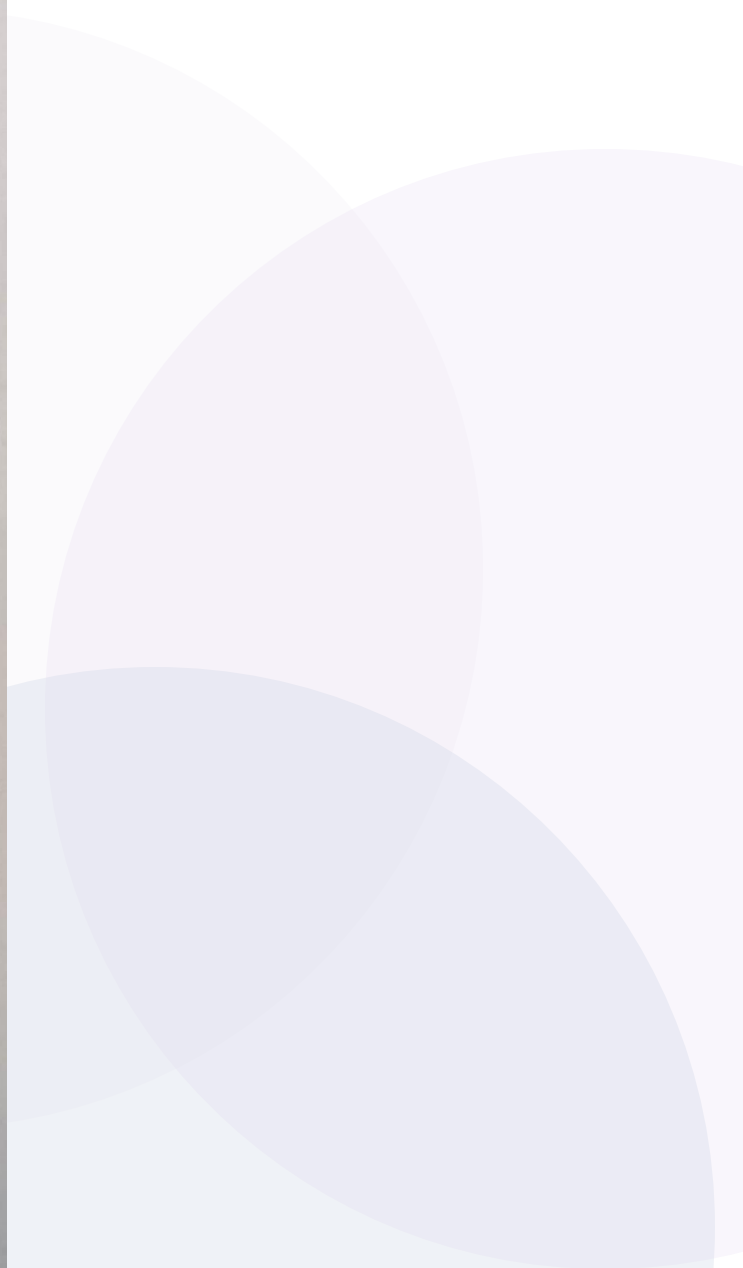
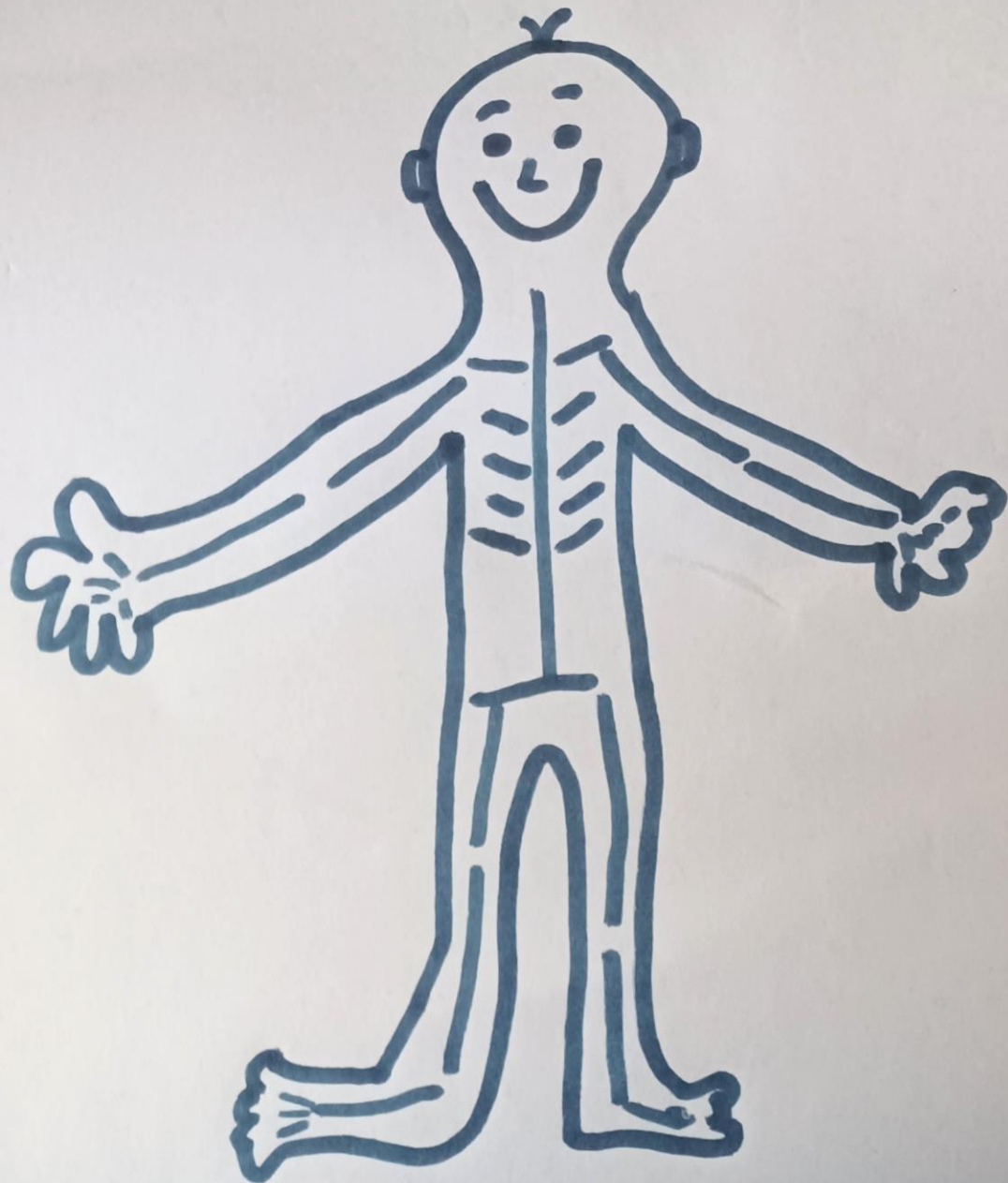


New episodes monthly



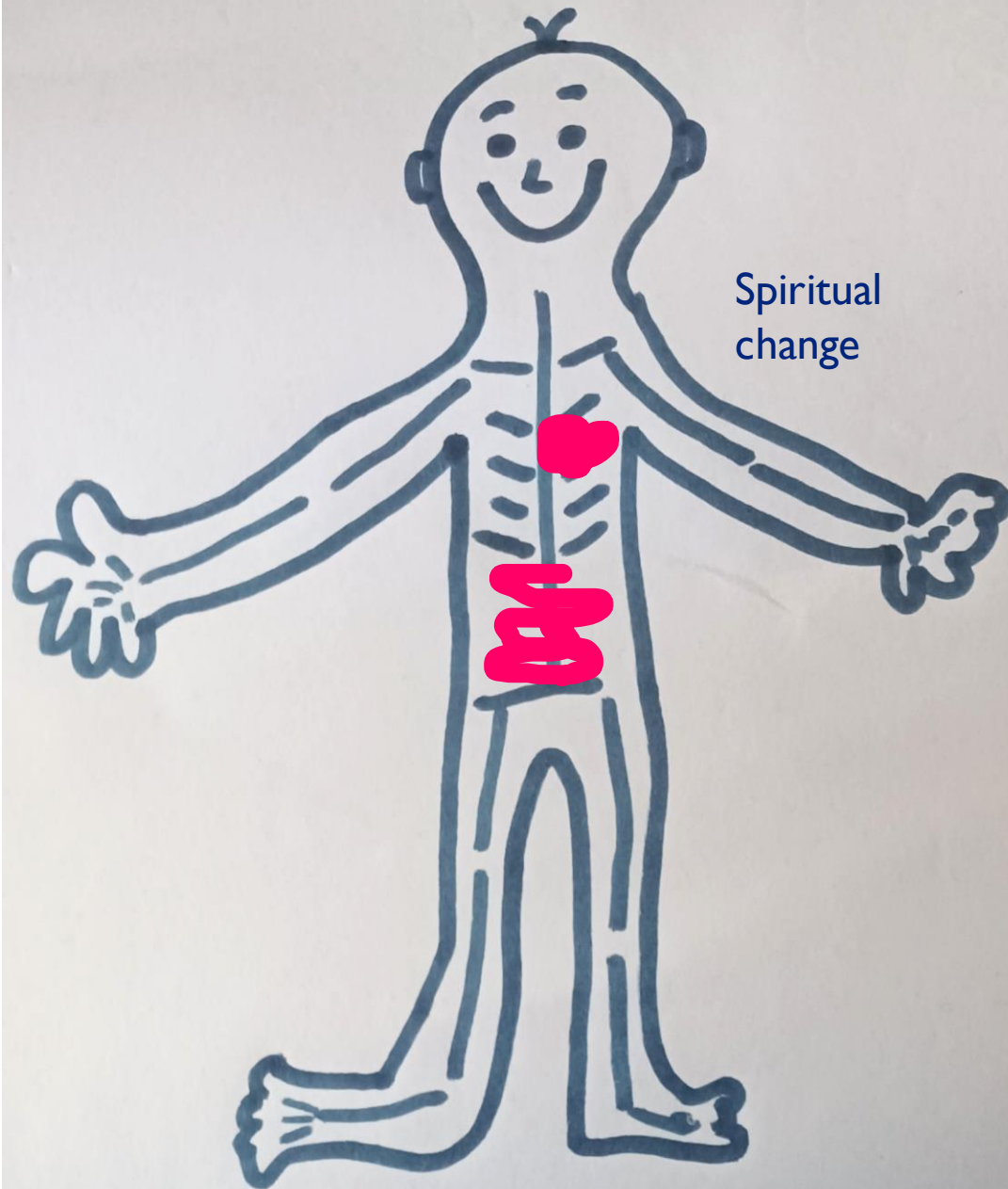


 THE CHURCH
OF ENGLAND
GROWING FAITH

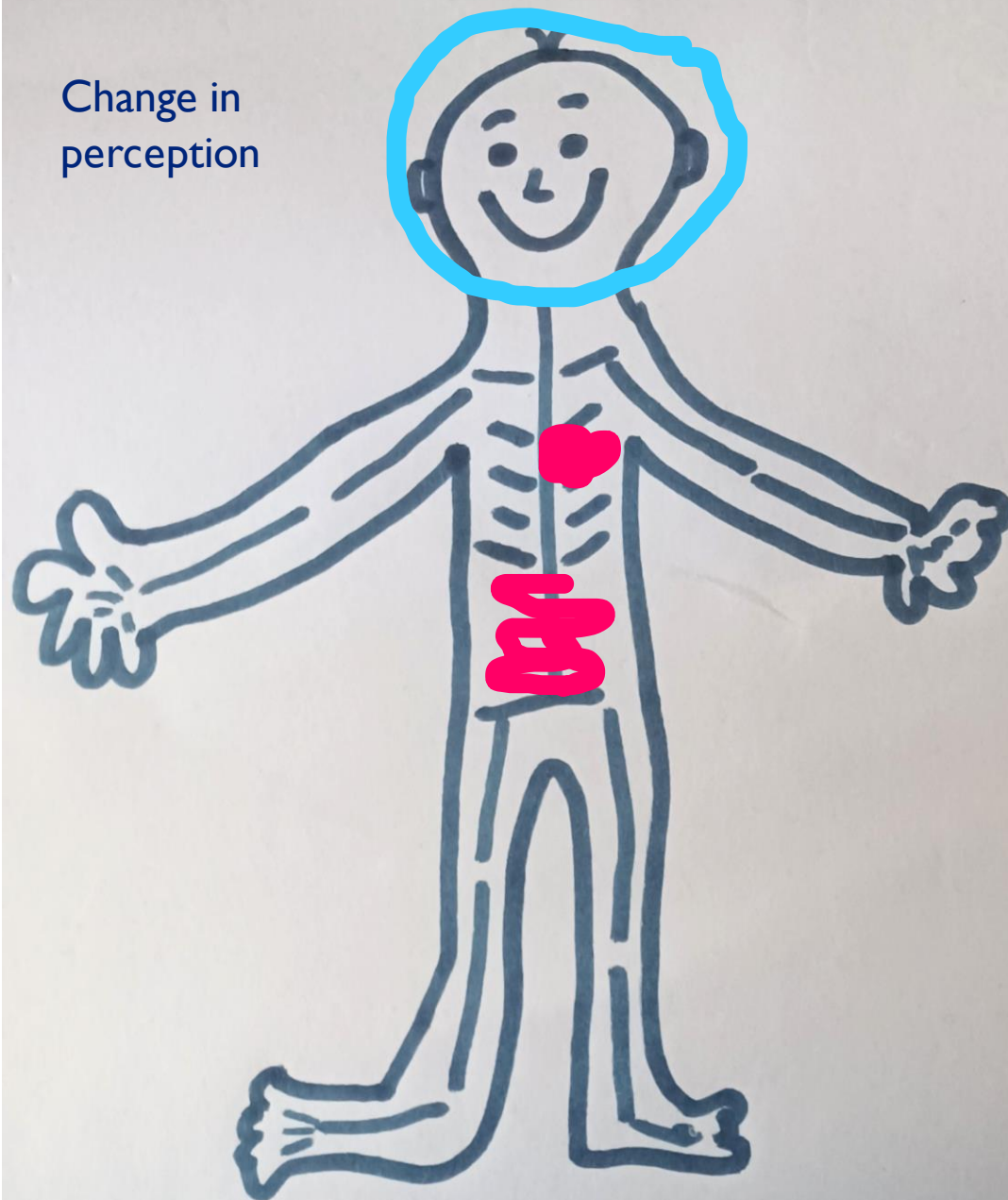




THE CHURCH
OF ENGLAND
GROWING FAITH

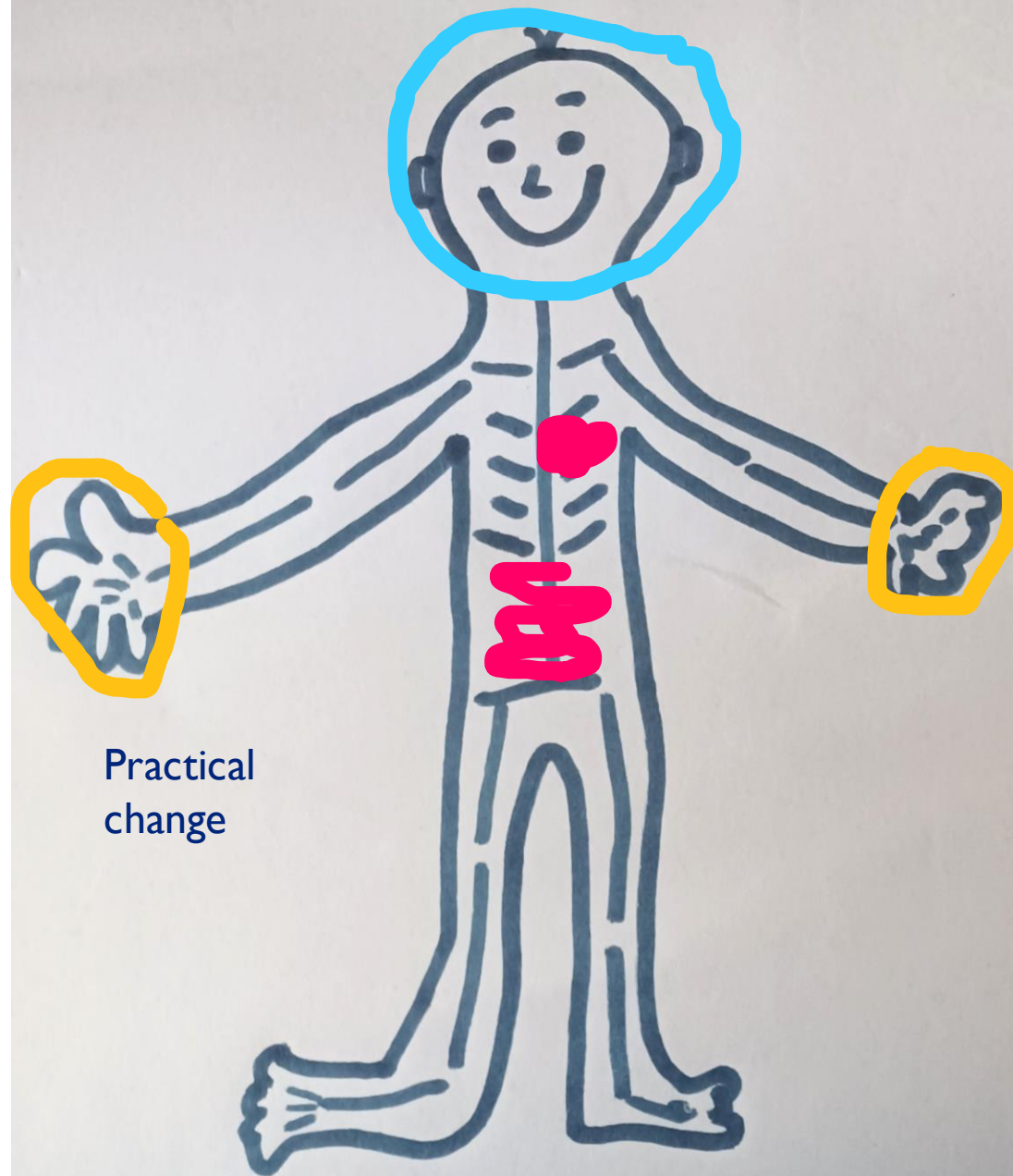


Change in
perception





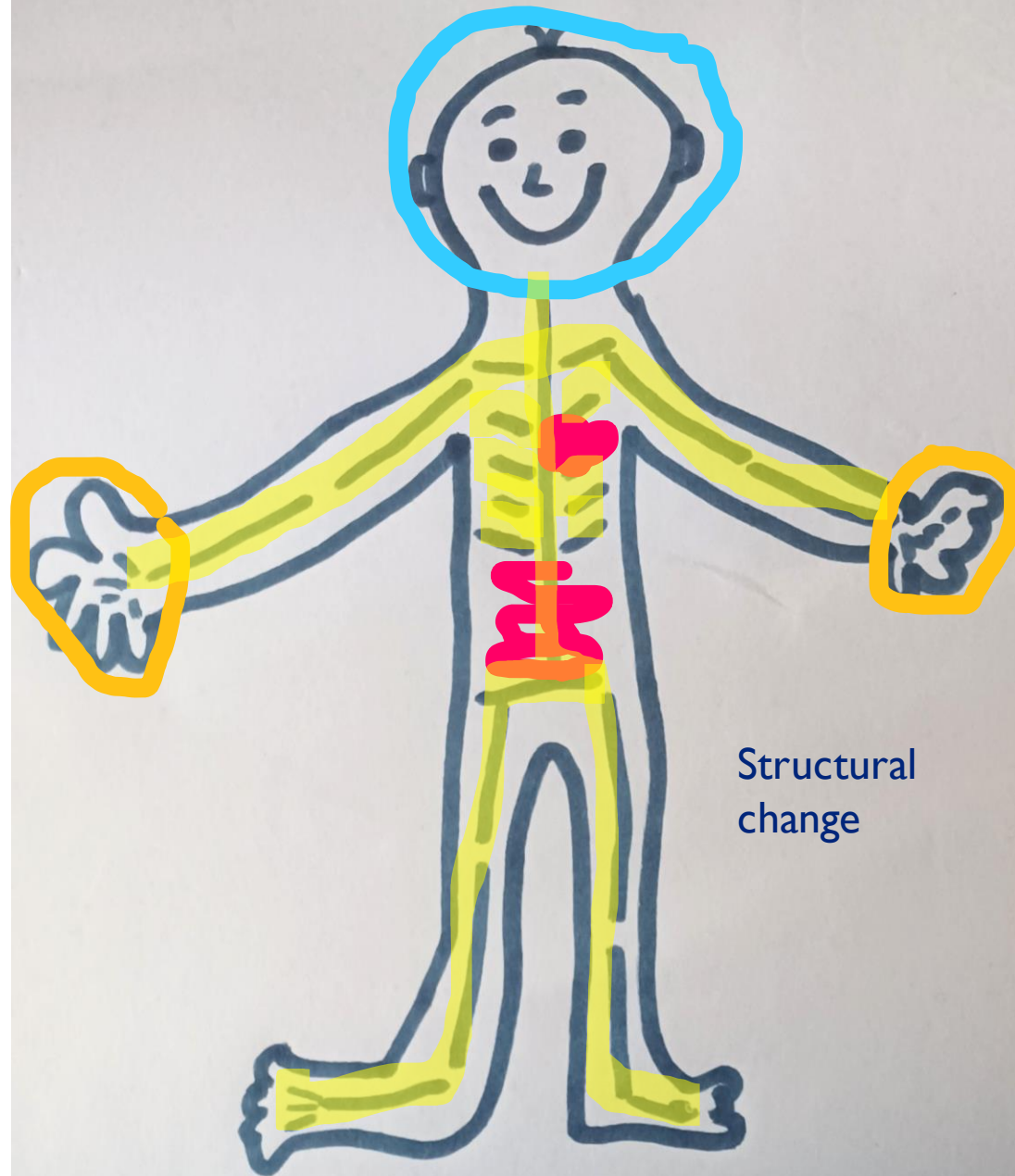
THE CHURCH
OF ENGLAND
GROWING FAITH



Practical
change



THE CHURCH
OF ENGLAND
GROWING FAITH

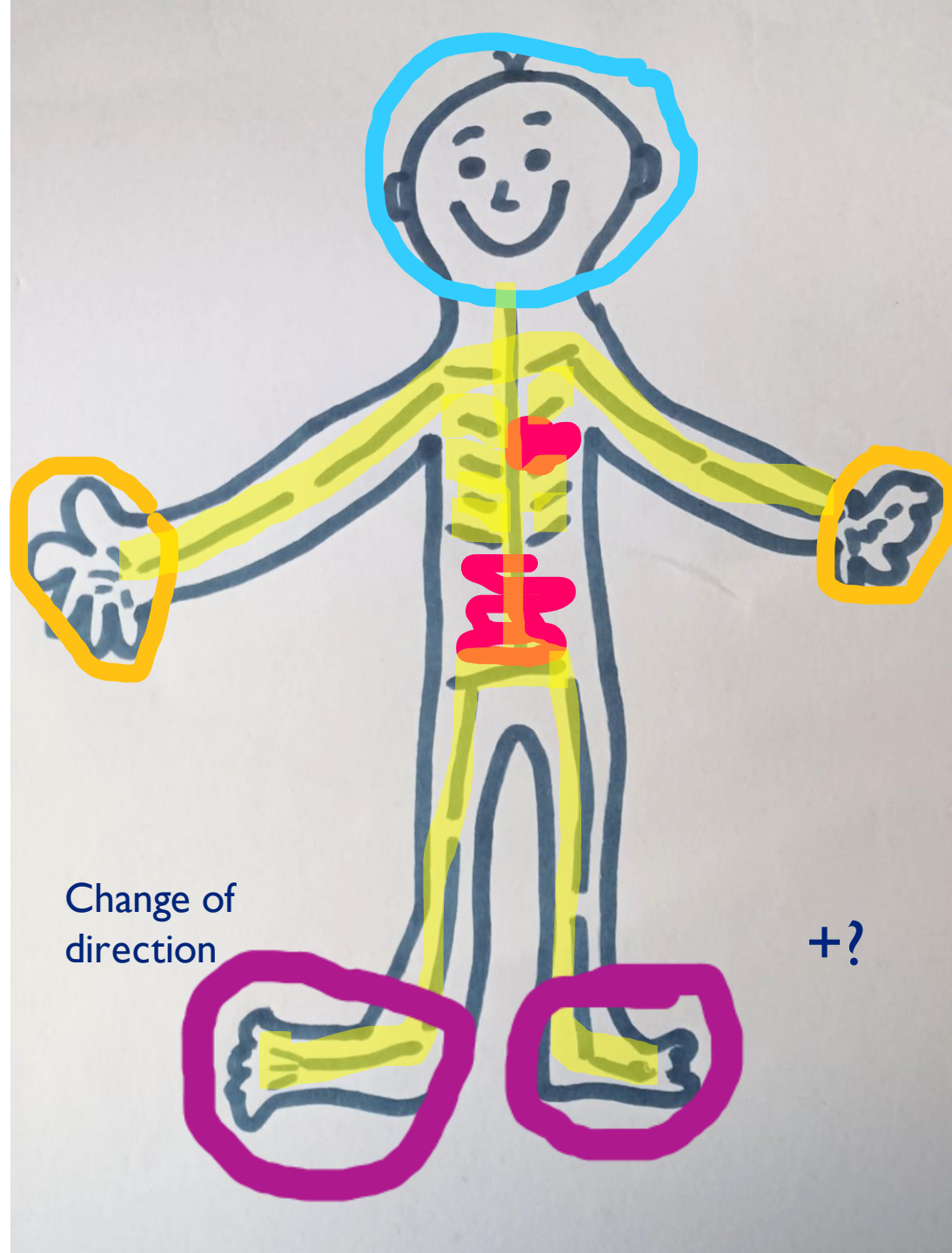


Structural
change





THE CHURCH
OF ENGLAND
GROWING FAITH



Change of
direction

+?



Dreaming dreams....

- *What if* your local church's 'centre of gravity' was in the school rather than in the church building?
- *What if* your diocese asked if you would like a church in your school?
- *What might* be the impact if one of the school staff wore a dog collar to work? A crossing patrol-priest, a SENCO-vicar, an ordained lunchtime supervisor, a teacher-priest... ?

Contact

Growingfaith@churchofengland.org



Our newsletter! Scan to sign up!



One stop shop



Discussion

Which parts of this made your soul sing?

What parts of this resonate with what God is doing in your own context at the moment?

What questions do you need to find answers to?