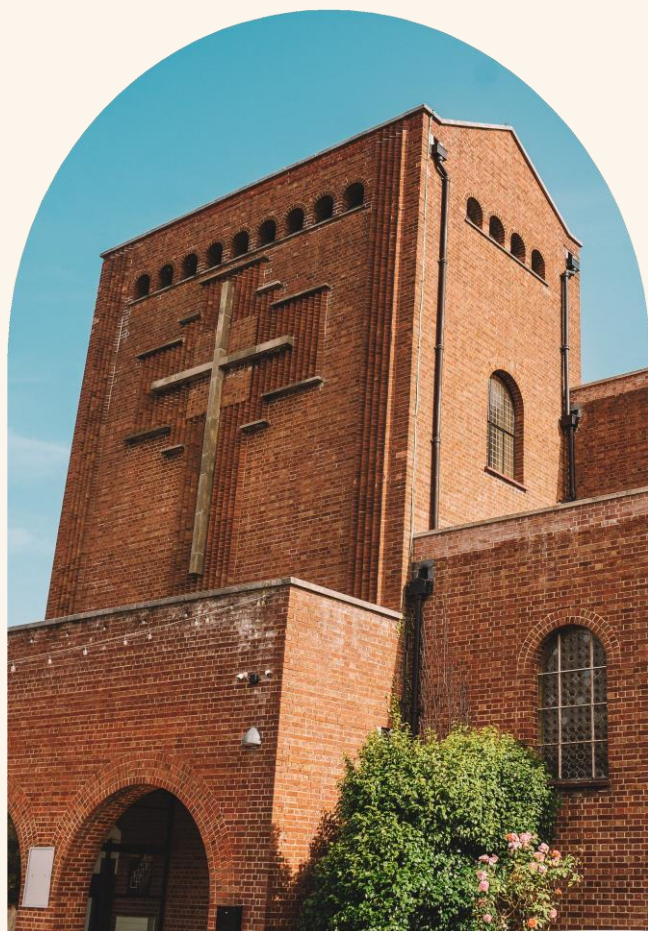




Parish Profile







St. Wins Totton is an evangelical charismatic church in Winchester Diocese on the edge of the New Forest and close to Southampton. We are part of the HTB network of churches.

We have a weekly worshipping community of around 160 adults every Sunday, rising to over 200 thanks to our growing midweek communion service and evening service. Adding in regular children's, youth and community activities, the weekly reach of our gospel ministry is well over 300 people.

St Wins is a diocesan resource church with a remit to encourage, work alongside and equip the churches in and around the local area. We have SDF funding which has enabled rapid church growth and the restoration of this Grade 2 listed building.



St. Anne's Calmore is a much smaller older Victorian building in the Calmore neighbourhood of Totton. Having been in vacancy for the last 3 years, St Anne's became part of the new parish of Totton and Calmore in May 2023. St Anne's offers a traditional Common Worship service which currently runs on a fortnightly basis.

The small but dedicated congregation are welcoming and eager to work together as we discern the midweek missional opportunities that Calmore offers.





Our vision is to see **Lives Transformed, Hope Restored and Freedom Found in Jesus**. We have quickly gained a reputation as a church that welcomes all, providing a secure and inviting environment that encapsulates our fundamental value of **home**. We currently have two ministries centred around mental health care. Coupled with the mainstream needs of a rapidly growing congregation, we are building an excellent pastoral foundation for those who become part of our community.

From the strong and secure value of **Home** we passionately believe that we are called to embody the values of **generosity, courage and fun**. We are a church that trains and equips lay leaders to find their place in the frontline in which God has called them, in leading, praying, interceding, exercising the gifts and power of the Holy Spirit, teaching and encouraging. We also believe that individuals will be called to form teams, which will eventually collaborate with other local churches to foster growth and revitalisation.

We are passionate about evangelism and place our Alpha ministry centrally in the life of the church. So far 177 people have attended Alpha since we relaunched in 2021, with many joining the church community after attending Alpha.

Our social transformation ministry Love Totton encompasses a number of ministries that are generous in their time and love towards those on the margins, who need confidence and decision-making skills needed to live on a low income, and who need support in times of financial need.

We have vibrant and growing families, kids and youth ministries, with great links and relationships made with local schools and colleges.

Our church is serious about what it's called to do, but we want to bring a sense of lightness and fun to the journey. We are informal, Spirit filled, pioneering and courageous.

What we do

Across the Parish we have a number of Sunday Services and Midweek activities where our aim is to connect with our congregation and our community.



Sundays

Morning Service, 11:00am
Evening Service, 6:30pm
(bi-weekly)

Midweek Service

Wednesdays, 3:00pm

The Pillar

Thursdays, 3:00pm

Alpha

Mondays, 7:00pm

Youth

Fridays, 7:00pm
Sundays, 11:00am

Kids

Tots & Toddlers
Wednesdays 9:30am
Sundays, 11:00am

Renew Cafe

Thursdays, 10:00am

LifeGroups

Across the week



Sundays

Morning Service,
10:00am (bi-weekly)

Coffee Morning

Wednesdays, 10:00am

Our Team

We are passionate about mission, planting and healthy church growth.



Ali Hill

Rector

Ali Hill has been involved in church planting for the last 20 years, most recently from Saint Mary's Southampton. She loves to see God revitalise the local church, impacting the local community with the love of Jesus.



Anna Harwood

Operations Manager

Anna has grown up in church, engaging in both missions abroad and at home. Anna was previously a social worker before joining the team in May 2022 as our Operations Manager.

Meet The Team



Dan Gardner
Ordinand / Worship Pastor
Part-Time



Elle Pitt
Pastoral Lead
Part-Time



Georgia Hart
The Pillar Project Lead
Full-Time



Tori Wills
The Pillar Project Co-Lead
Part-Time



Kristina Hollman
The Pillar Project
Coordinator Part-Time



Emma Seebaran
Operations & Admin
Assistant Part-Time



Leah Demirgil
Kids Pastor
Part-Time



Jonathon Canning
Youth Pastor
Part-Time



Jen Carter
Finance Lead
Part-Time



Julie Martin
LLM



Janet Barber
LLM



Tim Taylor
Curate starting June '24



Welcome to Winchester Diocese

Thank you for your interest in coming to work in the Diocese of Winchester where we are committed to serving people and communities across Hampshire and East Dorset. We serve a range of diverse communities, from rural to urban, with our Cathedral being sited in the historic city of Winchester.

From coastal Bournemouth to Andover, Southampton to the villages around Basingstoke, ministry takes place through our churches, chaplaincies and schools and we are delighted to encourage lay ministry in all its varied forms. We are committed to being a truly representative diocese and we recognise our need to develop in diversity.

The Diocese of Winchester is an exciting place to be and we look forward to receiving your Application.

Lyndhurst Deanery

The deanery has a mix of suburban, market town and village parishes and is located in the south of the diocese, within the archdeaconry of Bournemouth. The life of the deanery includes an active Synod and a friendly and supportive Chapter.

We work together to find ways to enable all the people of our parishes to live out their calling in our shared mission and ministry and encourage all our stipendiary clergy to be active within the deanery so that their skills and gifts can be used to build up the whole deanery.





In an exciting new chapter for this revitalisation project in Totton, we are delighted that you are interested in joining us as we transition to a new phase for our parish which lies on the eastern edge of the New Forest and close to the Estuary that separates us from Greater Southampton.

We are offering an Associate Minister full time stipendiary fixed term post for 3 years.

You will work closely with our Rector, a staff team, 2 LLMs and some retired clergy with PTO.



Who are we looking for?

To ensure that the life of the church is healthy, a second experienced clergy person is required to work alongside Ali, our Rector. The associate will ensure that there is stability and strength within the life of the church in order for growth and mission to continue.

How will that work?

- To facilitate our vision, together the clergy team will
- Champion and encourage our vision and values
- Pastor the church and encourage discipleship growth
- Oversee and develop prayer, worship, evangelisation and preaching
- Discern and encourage missional and outward facing ministry into the parish and beyond

The Associate, Rector and Curate will work closely together with the Operations Manager as she oversees operations, facilities, events and safeguarding. Together they will form the Senior Leadership Team.



What will our Associate Minister do?

Rector

- Primary connection and accountability to the Bishops of Winchester and Southampton.
- Clergy representative to the Southampton strategy group.
- Clergy representative to the Diocesan resource church group.
- Supervision of ordinands.
- Oversight of resourcing deanery worship training.
- Articulation of vision, values and strategic direction.
- Development of potential church revitalisation projects.
- Overseeing finance and fundraising.
- Training incumbent and line managing senior staff team.
- Line managing The Pillar Project team.
- Developing ordination discernment and lay leadership.
- External relations with local churches and deanery.
- Chair of PCC.
- Alpha and other evangelistic ministry.
- Oversight of all prayer ministries.
- An evident and prominent leader for the church community.

While these roles have distinct responsibilities, the associate and Rector will collaborate harmoniously as needed.

Associate

- Leads with and is line managed by the Rector
 - Oversight of St Annes Sunday Services which will utilise clergy and Lay leaders
 - Lead St Annes sub committee for PCC
 - Leads discernment of missional ministry in Calmore

Oversight

- for Occasional Offices
- Sunday services teams and rota
- Love Totton social transformation ministries
- Pastoral care alongside a strong lay led team
- Welcome and integration into church life for newcomers
- Midweek service
- Line management of youth and kids pastor

Development

- Adult discipleship including:
 - Life group leaders and material
 - Leader training stream including training days, Emerging preaching team

This is a highly strategic appointment for a hands-on, people-focused pastor. This individual will have the heart and the gifting to make connections between people in our church community and our parish. Following the Holy Spirit's leading, they will take responsibility for connecting people into the regular worshipping life of our church family.

We believe that this post offers an exciting opportunity to someone who wants to exercise ministry with significant responsibility and agency in the pursuit of practising the way of Jesus. It offers a gifted individual with experience, energy and bold faith the chance to come and make a real difference to kingdom growth and maturity.

The associate will be primarily focused on ensuring the flourishing of the church community. They will oversee our pastoral care across every age and stage of our churches, leading a strong lay led team who serve the parish. They will set up great ways to connect and integrate newcomers into the life of the church community.

This person would also coordinate and make the most of occasional offices: funerals, baptisms and weddings. They will ensure that our Sunday services run efficiently, planning rotas on churchsuite and developing teams. They will liaise with Sunday service managers and ensure that everyone on Sunday teams are committed to our vision and values.

They will have a passion and an expertise in encouraging disciples to practise the way of Jesus, overseeing the training and pastoral care for life group leaders and facilitating other ways to encourage discipleship growth.

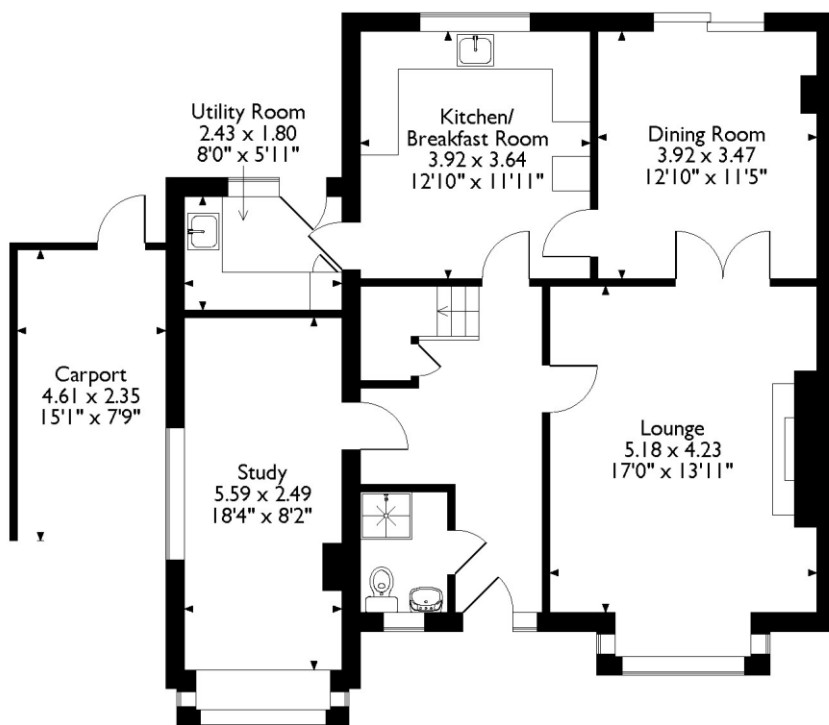
They will line manage our kids and families pastor, and with them explore new ways that we can missionally reach children in our community.

They will oversee the umbrella ministry of Love Totton, which encompasses all of our social outreach ministries, encouraging and equipping them to show the practical love of Jesus to those in our community.

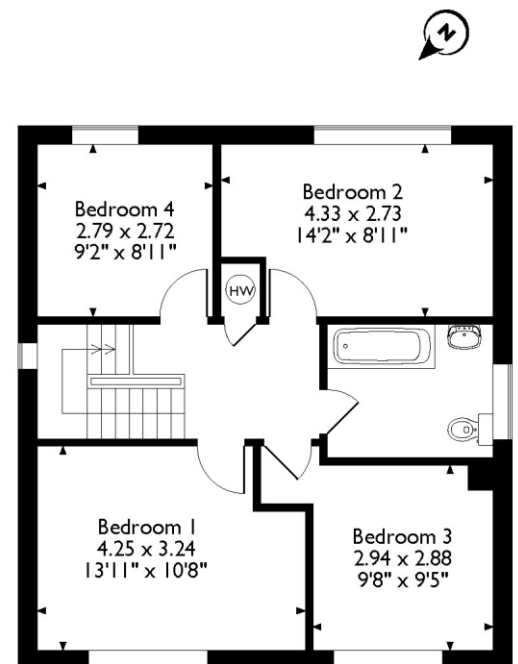
The Vicarage

Set in the beautiful village of Copythorne, with a local pub, petrol station and village shop in walking distance, the Vicarage is just 10 minutes drive from Calmore.

Pine Ridge, Romsey Road, Southampton
Approximate Gross Internal Area
148 Sq M/1596 Sq Ft



Ground Floor



First Floor

Please note that the location of doors, windows and other items are approximate and this floorplan is to be used for illustrative purposes only. Unauthorized reproduction is prohibited.



Finally, this person would be part of the senior team. They would be a trusted confidant, sharing with Ali the joys and sorrows involved with pastoring this growing and diverse church family. They will naturally come with a big vision for what they believe God will do, but they must also carry a big heart for people and capacity to be patient and play the long game as people grow in their faith and discipleship. Most of all, they will know they need to pray big prayers.

Please see the accompanying role description, personal characteristics and specification for more details.

For an informal conversation about the role contact:

Archdeacon of Bournemouth

Jean Burgess
Beverley.Teahan@winchester.anglican.org

Clergy Appointments Assistant

Jane Hammond
clergy.appointments@winchester.anglican.org

Rector

Ali Hill
ali@stwins.org



THE PARISH OF
**TOTTON
& CALMORE**



@stwinstotton