

LENT REFLECTIONS 2024

Over Lent, the Bishop's Staff Team have been reflecting on Lenten themes in short teaching videos which we hope will encourage and challenge individuals and communities this season.

THE LAUNCH OF THE EDGE HUB CAFÉ

EDGE is a Christian community group linked to Ascension Church, based on the Townhill Estate, Southampton, and it has just launched the EDGE Hub Café in a former Council Housing Office, a place for local people to gather and enjoy community with a Christian flavour!

WELCOMING THE NEWLY FORMED RACIAL JUSTICE ADVISORY GROUP

We're delighted to welcome our new Racial Justice Advisory Group! Any tolerance of inequality on grounds of race devalues God's creation, and as a diocese we must be committed to confronting racism. To help develop this work, our Racial Justice Advisory Group, along with Bishop David, will shape a diocesan strategy moving forward.



RESOURCE CHURCHES START 2024 WITH CONFIRMATIONS AND BAPTISMS

What an encouragement to see so many people confirmed and baptised by full immersion at three of our Resource Churches this month! Confirmation and baptism are two important acts of commitment in the life of a Christian when we make promises to follow Jesus, in the presence of our church community as well as friends and family.

NEWSLETTER ROUNDUP

FEBRUARY 2024



ST DENY'S CHURCH SOUTHAMPTON CELEBRATED BY THE NATIONAL CHURCH

We are delighted for Revd Sera Rumble and a team of passionate volunteers at St Deny's Church, Southampton, who have been profiled by the new Carbon Net Zero team at the Church of England. St Denys was chosen as their first ever case study of a church that has made small changes to reduce the church's energy consumption, and saved thousands of pounds on energy bills.

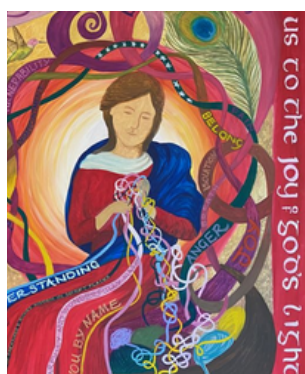


PUTTING YOUNG PEOPLE AT THE HEART OF WORSHIP

With concerns that fewer children and young people than ever coming to church, many churches that have a strong choral tradition are finding that investing in including young people in their choirs is bearing fruit. We spoke to three parish churches in our diocese who are putting children at heart of their choral worship.

BISHOP PHILIP VISITS HAMPSHIRE & ISLE OF WIGHT POLICE CHAPLAINCY

The Hampshire & Isle of Wight Constabulary Chaplaincy was delighted to welcome Bishop Philip for a visit, who wished to recognise those involved in such vital pastoral work and hear more about what police chaplaincy involves.



MAKING PROGRESS IN ENGAGING WITH NEURODIVERSITY

Within our church communities, we are called to think about how we can be as welcoming as possible, celebrating the fact that all our bodies and brains work differently. Revd Rachel Noël, vicar at St James, Pokesdown, has explored the progress the Church and our diocese has made so far in welcoming and engaging with neuro-divergent people.