

Rector

The Benefice of Farleigh, Candover and Wield

In the Deanery of Alresford



INDEX

Page	Title
3	Welcome
4	Alresford Deanery
5	Introduction
6	Our Vision
7	Our Church Life
15	Our Team
16	Our Organisation: Governance; The District Church Councils; Church Wardens; Administrator; Church Bells; Finances.
18	The House
20	Role Description
22	How to apply
23	Appendix



WELCOME

Thank you for your interest in coming to minister here in this Diocese.

We serve a whole range of diverse communities, from the historic city of Winchester with our glorious Cathedral, to the great port city of Southampton, the burgeoning boroughs of Basingstoke, Bournemouth and Christchurch, thriving market towns such as Andover, Alton, Alresford and Romsey, and innumerable picture-perfect Hampshire villages. In all that there is much wealth – but there is also significant deprivation too, especially in our large urban conurbations where our churches are supporting some of the diocese’s poorest communities.

In every context, we are committed to the making the love and life of Jesus Christ known, through our churches, schools and chaplaincies, in a way that makes a tangible difference to those communities and their people.



*The Rt Revd Philip Mounstephen,
The Bishop of Winchester*

In many ways the Diocese of Winchester is in transition, as is the world around us. In parish ministry we seek people who are aware of the challenges that we face, but who are motivated above all by faith, hope and love in addressing them. We welcome those who are committed to help God’s church to be the very best it can be, in the power of the Spirit, releasing all God’s people into the mission and ministry to which they are called. And we recognise too our need to develop in diversity.

We are excited by the opportunities before us, and warmly invite applications from those who want to join us in addressing them.

With the assurance of my prayers as you seek God’s best next step for you.



+ *Philip*

ALRESFORD DEANERY

Close to the historic Cathedral city of Winchester, we are a very rural deanery of five benefices and twenty-six churches with a rich diversity of tradition set in a large area of beautiful Hampshire countryside bordering Basingstoke to its North East and Winchester to the West.

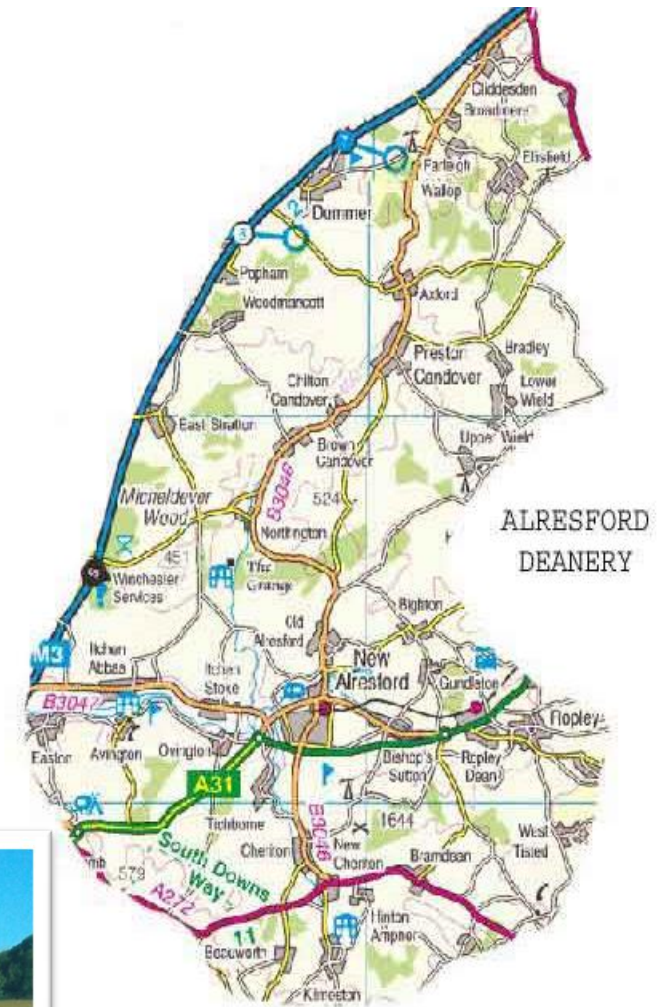
We have a mix of stipendiary clergy, SSMs, LLMs and those who hold the Bishop's Commission for Mission. Recently Alresford Deanery has agreed to be in partnership with its neighbouring Alton Deanery, being held in plurality. We are now holding joint chapter meetings and Deanery Synods working towards common vision and strategy.

We want to build on the practical and positive Deanery Mission Action Plan (dMap) and Pastoral Plan which includes the development of Focal Ministry in the Deanery, with a pilot period as a first step. The Arle Valley currently has two Focal Ministers in the Pilot scheme.

I believe this is an exciting time to be joining us in a strong focussed team.



The Reverend Canon Andrew Micklefield
Acting Area Dean of Alresford Deanery
Area Dean of Alton



INTRODUCTION

We are seeking a Rector for the Benefice of Farleigh, Candovers & Wield.

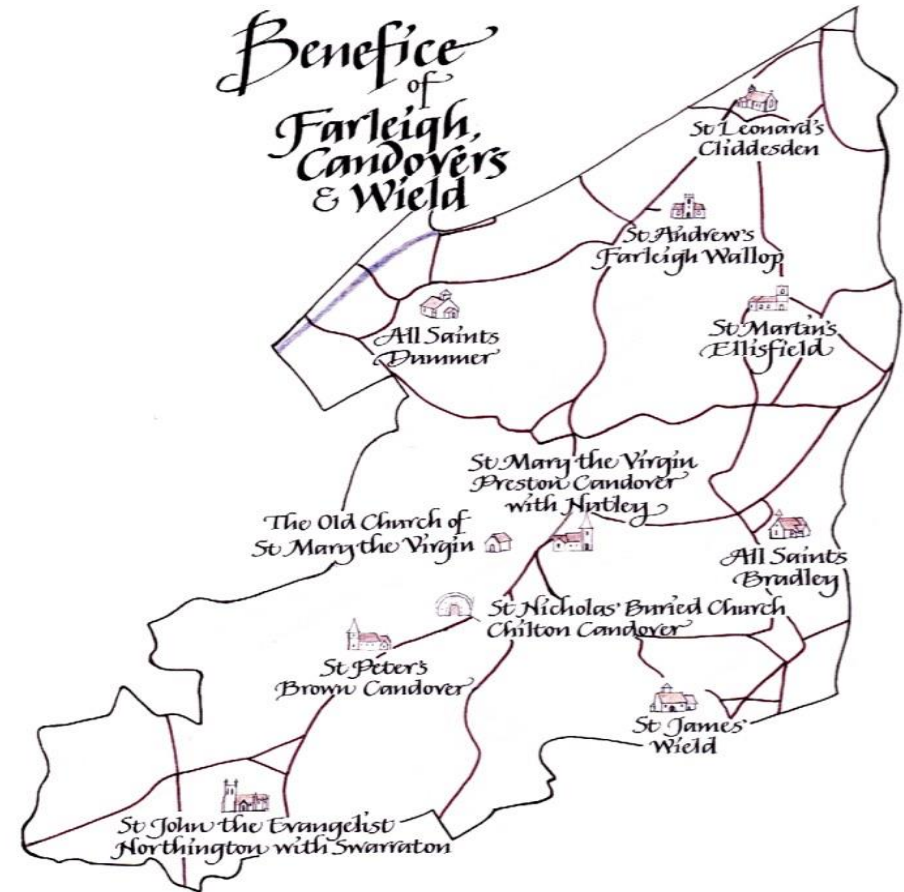
Our Benefice runs from the village of Cliddesden, situated just south of the M3 at Basingstoke, to Northington 10 miles away to the south. London is just 45 minutes from Basingstoke by train.

The Benefice has a population of circa 2700 people and consists of nine churches and four PCCs serving the rural villages and hamlets of Cliddesden, Dummer, Ellisfield, Farleigh Wallop, Preston Candover, Axford and Nutley, Bradley, Brown Candover, Chilton Candover, Totford, Swarraton, Northington and Wield.

All parishes inevitably have their individual characteristics and local loyalties are strong. All the villages have a mix of housing from grand county houses through to housing association housing and former council house estates.

The Rectory is in the centre of the benefice in Preston Candover. On the opposite side is Preston Candover CofE (Controlled) Primary School. We have a good secondary school in Alresford - Perins School - which offers a curriculum rich in the arts and sport. There is a choice of 6th form colleges: Peter Symonds in Winchester, Alton College in Alton, and Queen Mary's College in Basingstoke.

We are surrounded by beautiful countryside with lots of footpaths to explore the county's rich heritage. We also are close to the South Downs National Park and the New Forest.



OUR VISION

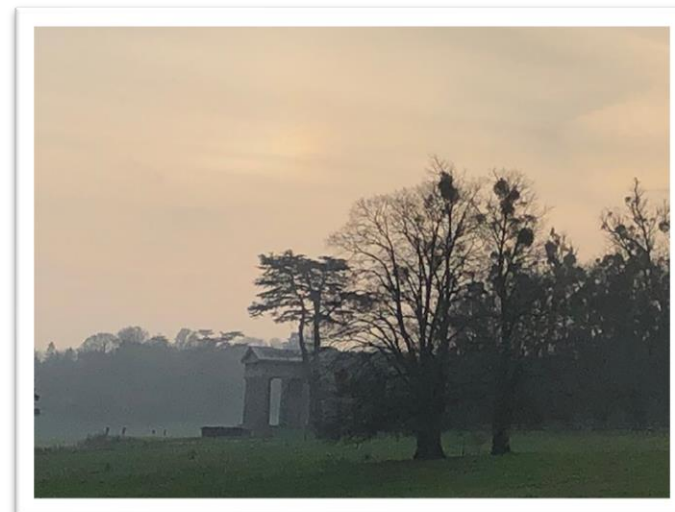
Our vision is to be a welcoming, thriving, and growing Christian family, that is supported by and integrated in the wider community of which we are part. All our main festival services are very well attended.

Looking to the future, we wish to:

- Capitalise on the experience and skills of the new Rector to further our vision.
- Develop further the pastoral care and outreach in our community.
- Nourish, encourage and increase contact with all age groups across the benefice in order to grow Christ's mission here. We are especially keen to develop our Family Services at Cliddesden and Preston Candover.
- Relations with our Church of England Primary School had been strained in recent times, but we are looking forward to building a new relationship going forward.
- Be innovative in the ways and times when people can be reached to take part in the Christian community.
- Grow the Lay-led activities.
- Develop, encourage, and embrace the gifts that people can give – time, practical skills, money, expertise, Lay ministry. Draw more of our gifted people into authorized ministry.
- Try new initiatives to encourage people on their Christian journey.

For previous newsletters and parish magazine articles and other information about the benefice, please see the information on our website.

<https://www.farleighcandoverandwield.org.uk/>





OUR CHURCH LIFE

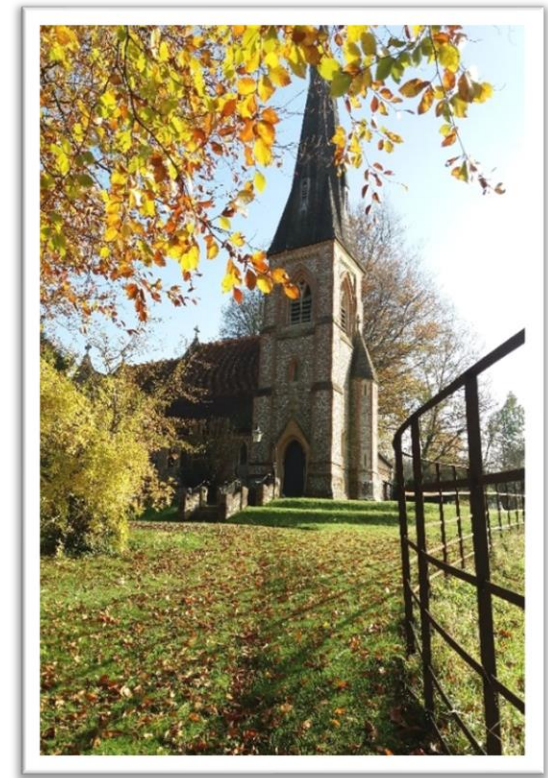
Being a welcoming Church to everyone is very important to us in the life and mission of our parishes and our services try to cater for a wide variety of preferences. We offer a range of worship style from BCP services to Parish Communions and All Age Worship services. Our sung worship includes traditional hymns with organ accompaniment, contemporary songs with keyboard, and also embraces the use of recorded music which permit a wide range of music genres.

For our current worship pattern across a month please see table below in the Appendix.

We are blessed with a team of volunteers supporting our ministry. The Rev. Ian Thacker, a retired Prison Chaplain (who is also leading us during our Interregnum), three people who hold the Bishop's Commission for Mission; one to lead worship and two for Pastoral work. We also have several lay people who are currently leading Morning Prayer services in their local church. The Benefice prayer diary is produced by lay members of the benefice.

We employ a part-time parish administrator Tricia Knight.

The Farleigh Parish at the northern end has a parish magazine, Hill and Dale, and the southern parishes have The Oxdrove parish magazine that is overseen by the Rector and Churchwardens.



The Parish of Farleigh

The parish consists of four small rural villages, each with its own church and individual character. The population is a balanced mix of all age groups. Most of the working adults commute to Basingstoke and further afield as far as London and Southampton.

There is a flourishing Amateur Dramatic Group in Cliddesden and an occasional village pantomime in Ellisfield. There is a golf club and a cricket coaching school at Dummer.

St Leonard's Church, Cliddesden

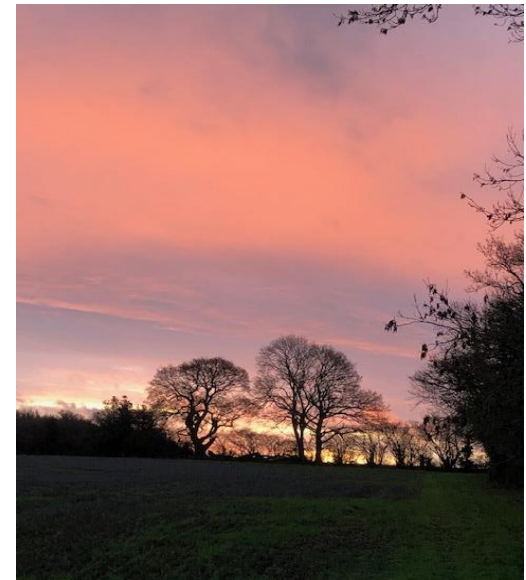
There are a number of barn conversions into offices and some local enterprises, including the Jolly Farmer public house, Car repair workshops and MOT testing stations. There is a weekly Parish Playgroup run in the village hall at Cliddesden, by church members.

A small development of low-cost (once) housing sits within the Hooper's Mead area, comprising mainly bungalows for older residents or families with a Cliddesden connection.

Near the church is the New Millennium Hall, which opened in June 1999. We have a very good relationship with the local primary school, which, although not a Church school, is pleased to invite the Rector in twice a month to lead assemblies with a Christian theme.

St Leonard's has a kitchenette and toilet, a good sound and projection system and an effective heating system. There are three services per month and our family service team are working hard to plan services that will enable small children and families to connect with Christian worship.

The churchyard is designated a Site of Importance for Nature Conservation (SINC) and is managed by volunteers.



All Saints', Dummer

All Saints' church is Grade 1 listed; the oldest, visible part of the present building dates from the 12th century, has a plethora of mediaeval graffiti and the oldest wooden pulpit in England, from which John Wesley and George Whitfield preached. There are strong connections with Jane Austen and All Saints is on the St. James' Way with many pilgrims stopping on their way to Santiago de Compostela. The church is open throughout the day to receive Pilgrims and visitors. The peal of 5 bells in the church's wooden bell tower dates from the 1590s and they are in regular use.

There is a small, modern and well-equipped meeting room with seating for 20 people, a toilet and a kitchenette. The room is mainly used as a venue for Council meetings and for preparing refreshments after certain services.

There are four services each month two of which are currently Lay led. One service is a 'Sunday Special' that aims to be attractive to non-regular visitors to church. There is an 0800 BCP service every month and Matins four times each year. The church supports local charities.



St Martin's, Ellisfield

There are three services each month, one of which is lay led. It has a regular and strong congregation, and all major Christian Festivals are very well supported. The church has good standing in the village. Many church members are involved in other ways in village life through parish council and social groups. There is a choir that use the church called The Belles of St Martins. There is a weekly prayer group based in Ellisfield that came into being in 2019.

St Andrew's, Farleigh

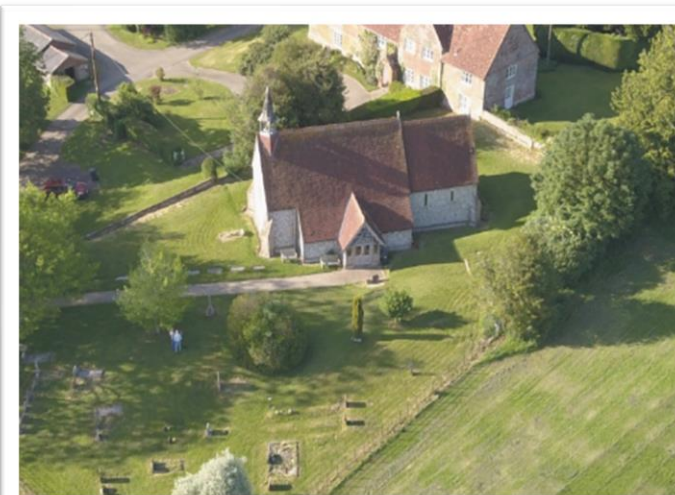
This church is sited on the Farleigh Estate, which is owned by trustees of the Portsmouth Estates, in the middle of a grazing field with public access to the church. It is used for a combined Farleigh Parish service every fifth Sunday, weddings and funerals and hosts a very well attended candlelit Nine Lessons and Carols at Christmas.



The Single Parish of the Candovers with Bradley

The three separate parishes of Bradley, Preston Candover and Brown Candover came together to form a single parish at the end of 2018. St. Mary the Virgin, Preston Candover, is the parish church and All Saints', Bradley, and St. Peter's, Brown and Chilton Candover, are Chapels of Ease licensed for funerals and weddings. Our churches although built around a similar period, differ widely. We have a small, dedicated PCC and all the churches are well maintained in line with the quinquennial reviews. We have however struggled to pay our CMF request in the past 2 years.

We also have the remains of the church of St. Nicholas, Chilton Candover, known locally as the Buried Church. On the first Sunday of June Evensong is held outdoors on top of the old crypt.



All Saints', Bradley

Bradley has a population of approximately 110. As there is no shop, pub, club or village hall in Bradley, the village has the church truly at the heart of the community. This means that there is considerable loyalty to All Saints across the village from churchgoers and non-churchgoers alike. The north facing roof was re-roofed recently. As well as worship, the building is used for Harvest Meals, Parish Council meetings and Concerts. There is currently one 8.30am Holy Communion Service (CW) per month at All Saints'. They also share the 5th Sunday service with St. Peter's, Brown Candover.

St. Mary the Virgin, Preston Candover

Sited at the centre of the village and opposite the village pub, the Purefoy Arms. This is the home of a small congregation who enjoy a variety of worship: contemporary worship music, projected services, robed Holy Communion with a small choir or recorded choral music. A new heating, lighting and Audio-visual system has been installed. There are currently 3 services a month. The church enjoys services which draw the village together especially families for Easter, Christingle, Crib services and Christmas Day. The annual British Legion Remembrance Service is shared by rotation with St. Peter's, Brown Candover, and St. John's,



Northington. There is also a wreath laying ceremony at the War Memorial next to the church at 11am on the 11th November at which members of the school attend if during the week.

There is a Church of England school in the village, a Pre-School, a Tennis Club, a Gardening Club and a Village Hall Committee which also organise village events. The thriving community store is a real hub for the village and has helped restore a sense of community where, apart from buying fruit and veg and other groceries, you can stop for a coffee and a chat. The hamlets of Axford and Nutley are part of the parish of The Candovers with Bradley.

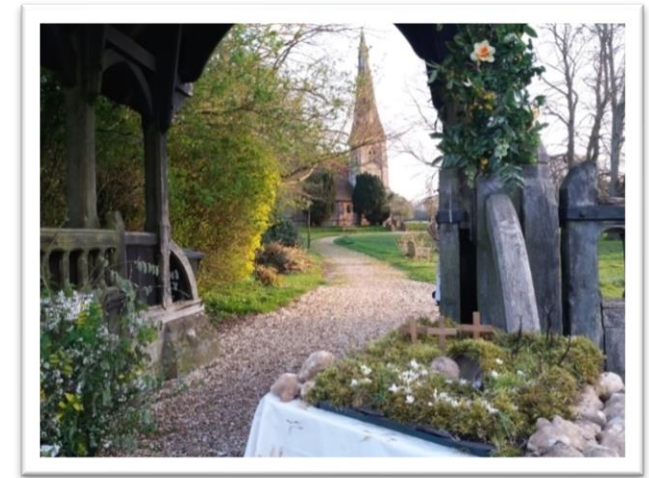
St. Peter's, Brown Candover

A large building that has had recent roofing and spire work, it is sited next to the Candover Valley Club and scenically overlooks the cricket pitch. The church is a large clear space and the proximity of the club enables it to host post church receptions. St Peter's has one service per month.

The village's Cricket Club is active across many ages, there is also a Cub and Beaver Scout group, who join in with Remembrance services.



In Chilton Candover there is the crypt of the "once lost" St. Nicholas Church. In June every year an outdoor Evensong is held on top of the "Buried Church" where the sermon competes with evening birdsong. The year 7 pupils from the school usually attend a service on St. Nicholas day in December. Next door is the popular ["The Yard" café.](#)

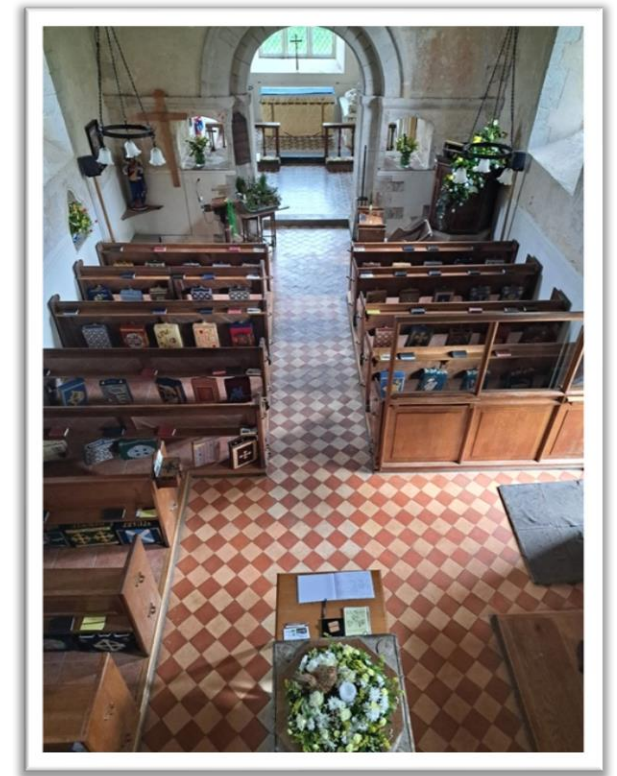


Parish of St James, Wield

St James' is a small and beautiful Norman church built somewhere between 1130 and 1150 , it is a Grade I listed building holds up to seventy persons in close fellowship. Its worship style is mainly Book of Common Prayer with sung Matins and Evensong.

St. James' is part of The St. James Way, a modern-day Camino in the South of England to follow the probable route taken by medieval pilgrims on their way to Santiago de Compostela from Reading Abbey.

Wield's population is around 240. Whilst some residents commute to work in London or locally, agriculture continues to flourish and there is a winery, a garage and light industries site. Meeting points are St James' Church, and the Village Hall in Upper Wield, Yew Tree pub and Cricket Club in Lower Wield. We currently have 3 services a month with a usual congregation of around dozen. This will swell to standing room only for the Carol service, Christmas, and Easter.



Parish of St John the Evangelist, Northington

The parish of Northington with Swarraton is small in population, having around 200 residents, but covers a geographical area of some 3.5 by 2 miles.

A focal point of the village of Northington, and with a new roof and 6 bells, St John's offers a wealth of interest. A Grade II* listed building, St John's is a fine example of late Victorian Gothic Architecture. It was designed entirely by Sir Thomas Graham Jackson and is an integrated architectural and musical whole of extraordinary heritage worth.

Located 9 miles from the centre of historic Winchester and within walking distance of English Heritage monument [The Grange](#) (which is also the home of opera company, [The Grange Festival](#), which hosts internationally acclaimed performances during the summer), Northington sits to the south west of the scenic Candover Valley with access to a network of footpaths, bridleways and ancient drovers paths.



As well as a monthly church service, the fine acoustics of St John's, the largest of the nine churches in the [Benefice](#), showcases a number of well-attended community choral and instrumental concerts. Comfortably seating up to 220, it is also popular for weddings, baptisms, funerals, and thanksgivings. The organ, made specifically for St John's in 1890, has recently undergone extensive restoration with grants from the National Lottery Heritage Fund and Hampshire and the Island Historic Churches Trust plus a range of other generous donors. [Young people](#) from local Secondary school, Perins School in Alresford, have created an [introductory film](#) about St John's, its cultural heritage and artefacts.

Do see our website for information about St John's, its organ, and its related community and education programme of work: <https://www.stjohnsnorthington.org/>. You will also find a guide to St. John's here: [St John's Guide](#).

There is also a choir ([Candover Valley Choir](#)) drawn from people across the whole area, which is based at St John's for their rehearsals, and which sings in a number of the churches for Remembrance and Christmas, occasional weddings, as well as gives concerts.

ACROSS THE BENEFICE - DISCIPLESHIP & SPIRITUAL DEVELOPMENT

Although our weekly church attendance is relatively small on average across the churches, festival services are very well attended. We have tried to ensure that every church has a service if possible over Easter and Christmas. We have previously had some small mid-week evening meetings, but these are not operating now. There was a ladies' daytime Bible Study group meeting weekly, led by our former LLM (previous Rector's wife).

There was a Saints Alive! course last year with another planned this year for the whole benefice. At Cliddesden, there is a small fellowship group which meets weekly for Bible study, There is also a weekly prayer group. In addition, there is a children's singing group, with eight regulars, who meet on a Friday afternoon after school. Children's activities/services also take place in the church at festival times (e.g. a pancake party, Palm Sunday activities, Christingle).

In Lent we have had a series of midweek meetings which has drawn people who attend church or wouldn't join a mid-week group otherwise. On Good Friday, we have a walk of witness carrying a cross the 12 miles of the southern churches from Northington to Wield via St. Peter's, Brown Candover, St. Mary's, Preston Candover, and All Saints', Bradley.

Church members are encouraged to read the Bible regularly using our own Prayer Diary and our website encourages people to explore a range of materials to use for daily devotions or further reading. It is desirable that we have more courses and events that provide opportunity for our villagers to explore the Christian faith. We are open to running Alpha, Christianity Explored, Pilgrim, Exploring Faith, and the Bible Course.

Young People

We are committed to the challenge of attracting young families: there is work to be done here. It is recognised that some forms of worship are not readily accessible to all.

Social

A wide range of social events occur across the parishes. Across the benefice we have Gardening Clubs, WI meetings in Wield and Northington, Film Club in Wield, and two Choirs. There are Cricket clubs at Wield and Brown Candover. The area is rich in country pubs.



Community Shop - Preston Candover

OUR TEAM

There is an active support team of the laity and churchwardens (see below), and a growing number willing to use their skills in ministry and church organisation.

- Rev. Ian Thacker – Retired former Prison Chaplain
- Julian Gibbons – BCM Worship Leading. Farmer at Bradley.
- Marina Avis BCM Pastoral Work. Former Primary school teacher.
- Anne Luneburg BCM - Pastoral Work. Retired nurse.
- Various church members who lead Morning Prayer to maintain the worship pattern across the churches whilst we await the appointment of the House for Duty priest.
- Tricia Grey-Knight – Benefice Administrator



OUR ORGANISATION

Governance

Governance is provided by the PCCs, which each meet four or five times a year

Each PCC has the responsibility of co-operating with the incumbent and ministry team in promoting the whole mission of the Church, pastoral, evangelistic and social. Each PCC has maintenance responsibilities for the church fabric, fund raising and churchyard.

The District Church Councils (DCCs)

Each church in the Parish of Farleigh has a District Church Council chaired by a Church Warden whose remit, in consultation with the Rector and PCC, is to maintain the fabric, the fund raising and the routine of each church.

Church Wardens

A list of the Church Wardens can be found on the Benefice website:

<https://www.farleighcandoverandwield.org.uk/who-we-are/churchwardens/>.

In addition, the Church Warden at Wield is Alwin Hutchison.

Administrator

Our administrator assists with all the admin work of which weddings matters make up a sizeable proportion.

Church Bells

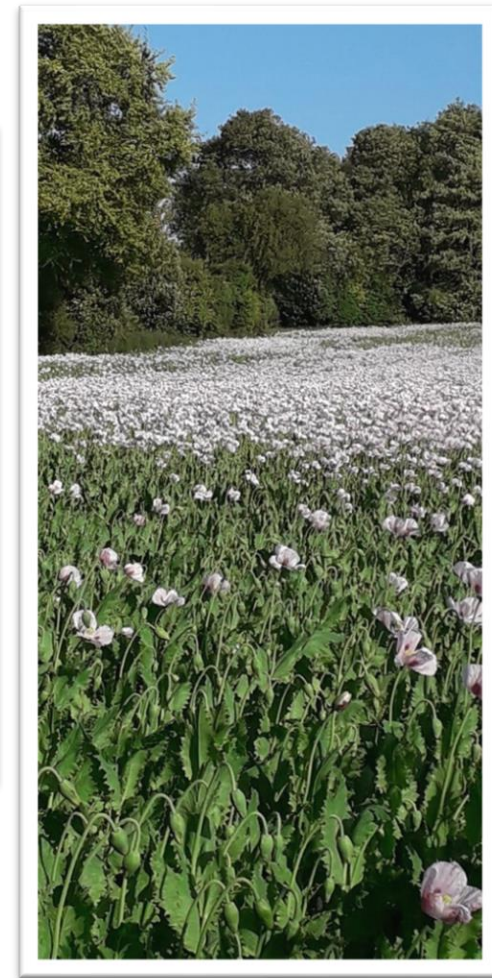
We have five church towers with bells and two bell ringing teams who ring for Sunday services, weddings and toll for funerals.



Community Shop - Preston Candover

Finances

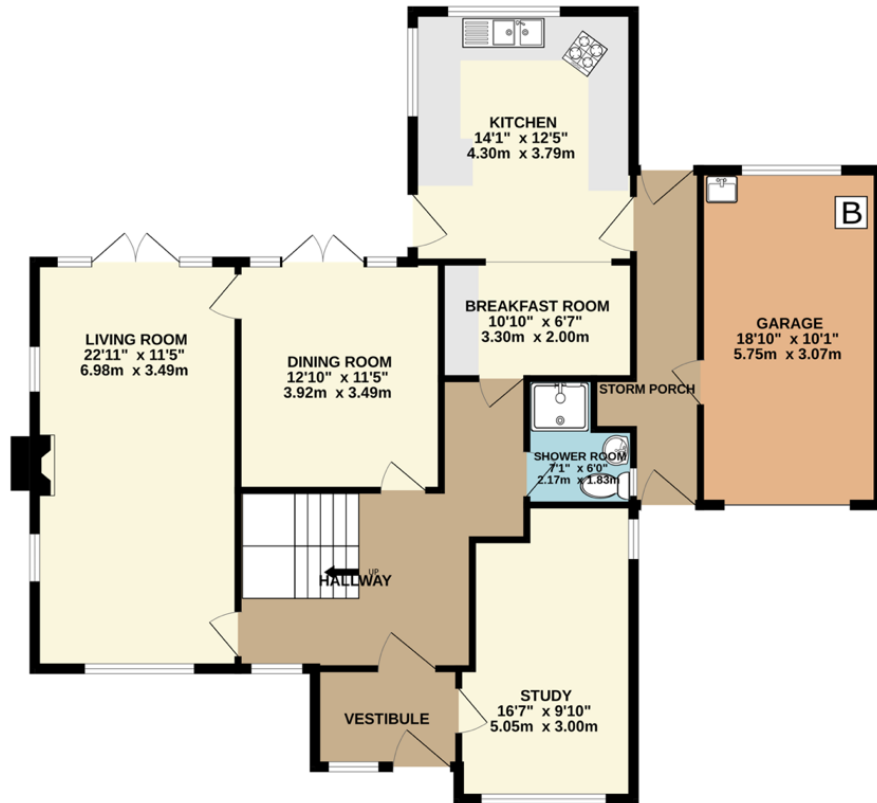
Our churches are all well resourced, however the 2 largest parishes have struggled to meet the Common Mission Fund requests



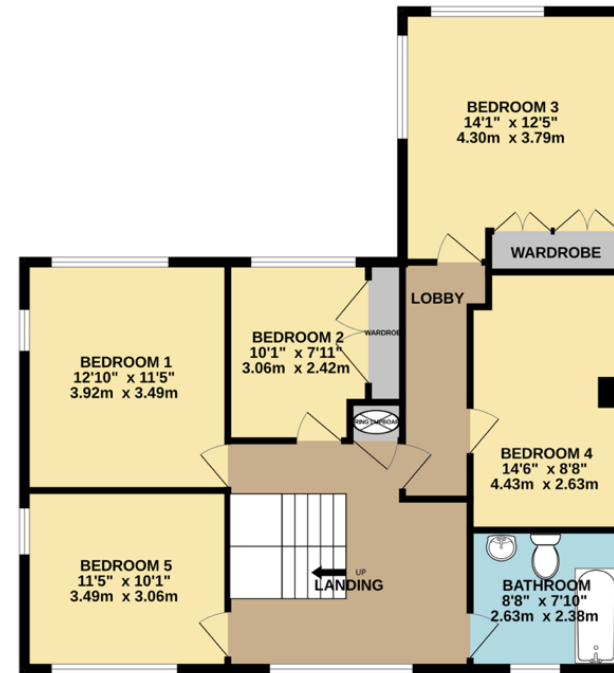
Remembrance display - St. James, Wield

THE HOUSE

GROUND FLOOR
1324 sq.ft. (123.0 sq.m.) approx.



1ST FLOOR
946 sq.ft. (87.9 sq.m.) approx.



TOTAL FLOOR AREA : 2270 sq.ft. (210.9 sq.m.) approx.

Whilst every attempt has been made to ensure the accuracy of the floorplan contained here, measurements of doors, windows, rooms and any other items are approximate and no responsibility is taken for any error, omission or mis-statement. This plan is for illustrative purposes only and should be used as such by any prospective purchaser. The services, systems and appliances shown have not been tested and no guarantee as to their operability or efficiency can be given.
Made with Metropix ©2024



The Rectory, Preston Candover, is sited in the centre of the village. It has a lovely back garden that opens onto fields at the back. It is in the centre of the village, by the village hall, community shop and tennis club.

The Primary School is opposite and is also where the Perin's school bus departs for Alresford.

ROLE DESCRIPTION

This Role Description should be read in conjunction with the vision, aims and priorities set out in this profile. The role is for a priest who will support and nurture the residents of these parishes and build on recent achievements to develop the mission of the Church in the community and ensure pastoral needs are met. As our Rector, we are seeking someone who will:

Spirituality

- Follow an ordered personal, spiritual life of daily prayer and Bible study and shares the fruits of their own discipleship with others.

Worship and Preaching

Lead worship and preach in a variety of services across the benefice.

- In preaching and other communication, present the Christian message in relevant and inspiring ways that encourage us to live and witness as Christians in the 21st century.
- Support and lead outreach initiatives to those outside the church family.
- Encourage individual reading of scripture.
- Support and encourage the ministry of lay people.

Leadership and Collaboration

- Understand 'servant leadership', be a proven team player and be committed to working collaboratively with the worship team and PCC's

Discipleship, Learning and Nurture

- Be open and creative in their approach to Christian discipleship and spiritual growth, strongly committed to seeing God's people grow and mature in faith and use their gifts in God's service.
- Actively encourage home groups and draw others in to begin or develop their discipleship.
- Be prepared to lead or co-lead outreach and discipleship courses and committed to the growth of small groups.
- Lead Collective Worship in school and fulfil the role of Ex-Officio Governor of Preston Candover Primary School

Evangelism and engagement with social justice

- Be proactive and persuasive in sharing their faith with others and can enable others to gain confidence to do the same.
- See that traditional services are helpful to many, and that God uses old and new.
- Reflect theologically and look to see where God is working.
- Have a missionary heart.

Pastoral Care

- Be approachable and sensitive to varied pastoral needs of our church family and wider community.
- Be able to talk to all parishioners with tact and discretion; it is expected that the person appointed will have a natural understanding of and empathy with all aspects of rural life.
- To be at the heart of our parishes and with a passion for rural ministry

Stewardship and Parish Organisation

- Exhibit and proactively encourage generosity in the discipleship of church members, in the giving of their time, talents and money.
- Fully participate in and contribute to the life of the deanery (including synod and chapter) and diocese.

The role description should always be read in conjunction with the [Guidelines for the Professional Conduct of the Clergy](#)

HOW TO APPLY

A full application pack, along with Terms & Conditions, is available from the Diocesan website: [here](#).

For an informal conversation about vacancies in the Winchester Archdeaconry please contact:

The Right Reverend David Williams (photo)

Bishop of Basingstoke 07889 547095

bishop.david@winchester.anglican.org

Jane Hammond

Clergy Appointments Assistant

clergy.appointments@winchester.anglican.org



Appendix

Pattern of services

Church	Week	1 st	2nd	3rd	4th	5th
Cliddesden		0945 Morning Prayer Lay Led	11.15 Family Holy communion	11 .15 Family Service	6pm BCPHCom on 4 th Saturday	
Dummer		1115 Sunday Special Lay led	0800 Holy Communion BCP	0945 Morning Prayer (Matins)LL	0945 Holy Communion CW	
Ellisfield		0800 Holy Communion BCP	0945 Morning Prayer Lay led		1115 Family Holy Communion	
Farleigh						1100 Holy Communion
Preston Candover		1000 Morning worship Lay led Recorded music	10 00 Holy Communion CW	1000 Family Service Recorded music/Other		
Brown Candover					1100 Morning Worship Lay led Organ	0930 Holy Communion Alt with Bradley Organ
Bradley					0830 Holy Communion CW (Said)	0930 Holy Communion Alternate with Brown Organ

Wield	0930 Matins Organ	1800 Evensong DC Organ	0900 Holy Communion BCP Organ		
Northington	1100 Holy Communion CW Organ				

‘From his fullness we have all received, grace upon grace.’
John 1:16

Diocesan Office, Wolvesey, Winchester SO23

9ND t: 01962 897082 w:

www.winchester.anglican.org



@CofEWinchester



www.facebook.com/CofEWinchester