

# Associate Priest

## For the Pastrow Family of Churches

*(with specific responsibility for the churches in Hurstbourne Tarrant, Vernham Dean, Facombe and Linkenholt)*

In the deanery of Andover



**Pastrow Family**

Churches sharing the love, grace and truth of Jesus Christ

# INDEX

Page	Title
3	Welcome
4	Andover Deanery
5	Introduction
6	Our Vision
7	About Pastrow
8	The journey to a Single Parish
10	About our Villages
15-16	Role Description
17	Pattern of Services
18	Finances
19	The Vicarage
20	How to Apply



## WELCOME TO WINCHESTER DIOCESE

Thank you for your interest in coming to minister here in this Diocese.

We serve a whole range of diverse communities, from the historic city of Winchester with our glorious Cathedral, to the great port city of Southampton, the burgeoning boroughs of Basingstoke, Bournemouth, and Christchurch, thriving market towns such as Andover, Alton, Alresford and Romsey, and innumerable picture-perfect Hampshire villages. In all that there is much wealth – but there is also significant deprivation too, especially in our large urban conurbations where our churches are supporting some of the diocese's poorest communities.

In every context, we are committed to the making the love and life of Jesus Christ known, through our churches, schools, and chaplaincies in a way that makes a tangible difference to those communities and their people.

In many ways the Diocese of Winchester is in transition, as is the world around us. In parish ministry we seek people who are aware of the challenges that we face, but who are motivated above all by faith, hope and love in addressing them. We welcome those who are committed to help God's church to be the very best it can be, in the power of the Spirit, releasing all God's people into the mission and ministry to which they are called. And we recognize, too, our need to develop in diversity.

We are excited by the opportunities before us, and warmly invite applications from those who want to join us in addressing them.

With the assurance of my prayers as you seek God's best next step for you,

*+ Philip*



*The Rt Revd Philip Mounstephen,  
The Bishop of Winchester*

# ANDOVER DEANERY

Andover Deanery has been through a period of significant transition. The urban churches in the town of Andover are now united into the Parish of Andover and, to the north, the Pastrow Family has similarly united into a single parish comprising eleven churches as part of the 'Benefice of the Future' initiative. They are joined by four multi-parish benefices to the west and south of the town.

We are now looking to the next phase of our common life in which, through Synod, Chapter and work between parishes, we can each bring our resources, experiences and gifts together in order to foster mutual flourishing and mission.



Revd Howard Jameson  
Area Dean



Nigel May  
Lay Chair



THE CHURCH  
OF ENGLAND



# Pastrow Family

Churches sharing the love, grace and truth of Jesus Christ

## INTRODUCTION

Welcome to the Parish of the Pastrow Family of Churches! This is a very exciting time to be joining us as we are now a single parish of eleven rural churches, each unique in shape, size and context, but binded together in sharing the love, grace and truth of our Lord Jesus Christ.

This is a significant leadership post. We are seeking an Associate Priest for the Pastrow Family of Churches in the deanery of Andover, with special responsibility for the communities of HurstbourneTarrant, Vernham Dean, Faccombe and Linkenholt.

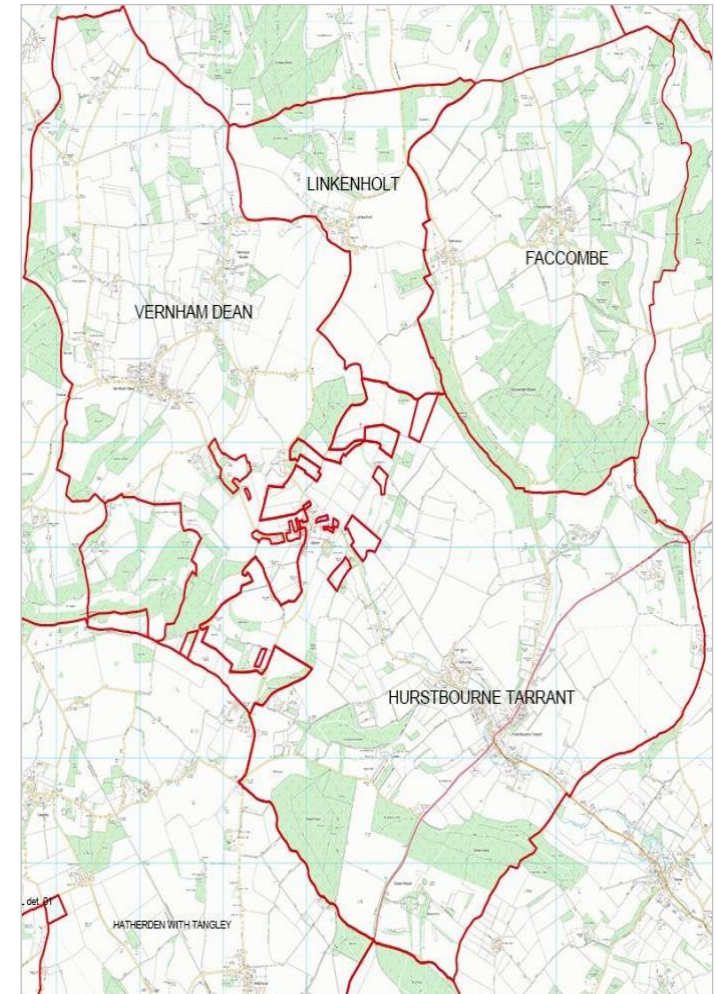
These communities are situated in the northwest corner of the Winchester Diocese, mainly to the west of the A343 which runs between Andover and Newbury. The four communities includes five villages and a number of outlying settlements and farms in four separate villages, with a total population of 1520. There are two Church of England primary schools and four churches.

A new Pastoral Scheme came in to being in June 2023 which saw the existing Pastrow Benefice of eleven churches join together as one single Parish of Pastrow. This was an evolutionary process for the existing benefice, borne out of a commitment to being a pilot for the 'Benefice of the Future' project which used SDF funding to explore new ways of being churches in a rural context.

This means that you will be licensed and be part of an experienced, strong and collegiate Ministry Team whilst retaining the responsibility for ministering to this group of churches. In total there will be a Rector, yourself as an Associate Minister, a Full-time stipendiary Curate, four LLM's, four retired ministers and a part-time administrator. For more information, please visit the Pastrow website at [www.pastrowfamily.org.uk](http://www.pastrowfamily.org.uk)

However, we have a 'you' shaped hole in the team and so we are very expectant and eager to for you to arrive and are looking forward to welcoming your fresh perspectives and ministry in a time of leading our churches in to a new and vibrant future.

We look forward to meeting and praying with you. You can meet the team [here!](#)



## OUR VISION

We love Jesus, and are passionate about sharing his love, grace and truth. We are a strong and united parish with a clergy and lay team that is mutually supportive, believing in unity without uniformity.

Our vision is to be a welcoming, thriving, and growing Christian family that is fully supported by and integrated in the wider community of which we are part, but evolving to reflect continuing demographic and social changes while fully supporting the deanery, diocese, and the needs of the wider world.



## LOOKING TO THE FUTURE, WE WISH TO...

- Grow our existing teams to build God's kingdom in our communities.
- Increase contact with all age groups across the entire parish.
- Make our churches more relevant to daily life through involvement with our wider village communities.
- Work together in our communities to make the new pastoral scheme work.
- Develop innovative ways and times when people can be reached to take part in the Christian community.
- Develop outstanding pastoral care and outreach in our community.
- Develop, encourage, and embrace the gifts that people can give – time, practical skills, money, expertise, lay ministry. Draw more of our gifted people into licensed and authorized ministry.
- Try new initiatives to encourage people on their Christian journey.



## About Pastrow...



# Pastrow Family

Churches sharing the love, grace and truth of Jesus Christ

The Pastrow Family of Churches has, since 2017, been one of three rural benefices in the Winchester Diocese which have run pilot programmes to see how new ideas and ways of doing ministry can reach out to the people in our rural communities.

There has been much prayer, discernment and activity since that time. The Ministry Team started as full-time Priest-in-Charge and a part-time HfD priest. When you arrive, there will be a large team which is committed to work together and support each other in ministry. We meet weekly on a Thursday for two hours to pray, study the Bible and discuss ministry across the parish.

We are also very blessed to have retired ministers and our own team of Lay Worship Leaders to support ministry and services across the parish on a Sunday and during the week. There are now many established teams, such as two Prayer Teams in the north and south of the parish, a Pastoral Visitors Team, a Families and Children Team who oversee Pop-in-and-Play at Hurstbourne Tarrant, Messy Church and Play and Praise at Charlton, A School's Ministry Team, a Healing Ministry Team, a Governance Group and a Finance Group.

Technology has played an important part of reaching out to the communities we serve, especially so during the pandemic, and we have been utilizing funding since 2019 to have wi-fi in some of our churches and two mobile broadcasting units so we can live-stream from churches when we need to.

As well as our vision of having prayer at the heart of everything we do, we are regularly exploring our ministries as individuals, as churches and as a collegiate parish. Yours is a significant role, not only as a valued and integral part of the Ministry Team, but as a major contributor to the next stage of our journey. There is much to do, not only scores of 'office' services and building and encouraging teams, but helping to establish our new PCC and the Local Church Groups who will continue to encourage their communities to know Jesus. Together, we look forward to welcoming you to help us establish a new vision for the future as we work with an established group of churches under your leadership.



# The Journey to a single Parish...

There has been a natural evolution towards becoming a single parish of eleven churches. Over the Benefice of the Future years, we have been working naturally towards being binded together to work more strategically and efficiently. This has taken much grace and insight, and the journey has been recorded with transparency and with a very real desire to learn from the process, to encourage and challenge ourselves and to help others along the journey.

At every step of the way, we have been mindful to be collaborative and transparent in our approach to decision making, and this continues to be the case. Over many meetings and across many groups we finally arrived at our Framework Document, which guides our journey towards being fully integrated.

The document can be read [here](#).

We embarked on a major review in 2023 after we became a single parish and found our strengths to be:

Prayer Groups	Strong Ministry Team	Excellent Administration	Schools' Ministry	Pastoral Visiting Group
Churches in good condition	Parish engagement with Children and Families	A commitment to working towards unity – PFG, single PCC, LYCiG, Days Away	Mix of church traditions	We identify as all being rural in context
Engagement with spirituality – retreat days, pilgrimage walk, Holy Spirit focus	We have funds & PCC & LCG's	Offices done to a very high standard	Transparency	We have a plan!





## Organization

The Parish of Pastrow now has one single PCC, made up of an elected representative of all churches, who each have their own 'Local Church Groups.'

What does an LCG do?

Live out the shared vision across our parish of sharing the love, grace and truth of Jesus Christ	Actively promotes the local church in the community it serves
Sets the annual missional priorities for the local church (LYCiG Plans)	Shares in the pastoral care of the local community
Has primary care of the local building & churchyard	Sets a budget for the year
Sets local worship patterns	Be representatives of Jesus Christ's Church

## Roles and Responsibilities

With the advent of a single parish, and with the widespread increase of ministry provision across the parish by more people offering themselves to serve in the church in numerous capacities (such as in prayer groups, FaCT, pastoral care teams etc.) we have greater clarity for our shared roles and responsibilities to provide focused oversight:

<p><b><u>The Rector of Pastrow</u></b></p> <p><i>Responsibility for:</i></p> <ul style="list-style-type: none"> <li>• Strategic oversight, vision setting &amp; planning</li> <li>• Main liaison with the Diocese &amp; Deanery</li> <li>• Leading on Spirituality, Prayer &amp; Discipleship</li> <li>• Training &amp; equipping Lay Leaders</li> <li>• Leading on succession planning</li> <li>• Supervising Vicar, Curate, Administrator &amp; Pastrow Churchwardens</li> <li>• Chair of PCC</li> </ul>	<p><b><u>The Associate Priest of Pastrow</u></b></p> <p><i>Responsibility for:</i></p> <ul style="list-style-type: none"> <li>• Pastoral oversight of the parish – Schools, Pastoral Care Team, LCGs</li> <li>• Implementing and monitoring local LCG plans</li> <li>• Leading on Safeguarding</li> <li>• Leading and implementing communications strategy</li> <li>• Chairing Liturgy Review Group</li> </ul>
<p><b><u>The Curate of Pastrow</u></b></p> <p><i>Responsibility for:</i></p> <ul style="list-style-type: none"> <li>• Training oversight of Smannell &amp; Enham Alamein Churches</li> <li>• Re-establishing a relationship with the Enham Trust</li> <li>• Developing a Chaplaincy at Smannell School</li> <li>• Reviewing Baptism Policies</li> <li>• Sharing in the leadership of Discipleship projects &amp; equipping Lay Leaders</li> </ul>	<p><b><u>The Administrator of Pastrow</u></b></p> <p><i>Responsibility for:</i></p> <ul style="list-style-type: none"> <li>• Being the Safeguarding Officer</li> <li>• All administration across the parish</li> <li>• Being the secretary of the PCC &amp; Bookkeeper</li> <li>• Being main liaison with the LCGs</li> <li>• Sharing in implementing communications strategy</li> </ul>

## CHURCH & VILLAGE LIFE

*In Hurstbourne Tarrant, Vernham Dean, Faccombe & Linkenholt.*

We have many brilliant activities in our villages, from the annual Hurstbourne Multi-Terrain Race to the Linkenholt cricket team. These and many more things make up the fabric of daily life in the parish, and they are widely supported by everyone including, of course, those who worship in our churches and hold them dear. They also are where people meet and exchange news and views.



Our four churches are at the very centre of their respective village lives, and they are a beacon and comfort to many in difficult times and provide a sense of community to church goers and non-church goers alike. Everyone is welcome and a spirit of inclusion is at the heart of all that we do. Across the four churches we offer a range of services, from BCP, through Parish Communion and All-Age Worship to Pop-in-and-Play for toddlers.

Our priorities are to ensure that we maintain and support our current worshipping communities whilst making sure that we do all we can to attract younger parishioners to connect spiritually with their local church.

There are differences in how our churches deliver to their parishioners in the new parish and so the following pages provide a digest and flavour of their individual activities.

## St Peter's – Hurstbourne Tarrant

Hurstbourne Tarrant lies in the Bourne Valley in a designated Area of Outstanding Natural Beauty that makes up part of the North Wessex Downs. The boundary comprises of Hurstbourne Tarrant, the village of Ibthorpe and half the village of Upton. The area contains beautiful scenery and offers many footpaths and bridleways including parts of the famous Test Way. Much of the area is designated as a conservation area containing a high proportion of listed buildings including several thatched barns and cottages dating from the early to mid-17th Century.

The Grade 1 listed St Peter's Church, originating from the 12C/13C, is nestled in the heart of the village opposite the Hurstbourne Tarrant Church of England Primary School (for 4–11-year-olds). The school frequently holds services in the church and has an 'Excellent' Ofsted Rating.



There are 50 people on the Electoral Roll and a weekly congregation at St Peter's of about 20 swelling to 150 for festival services. Regular attendees are of the older generation but there are many families with young children who attend the family and festival services. Approximately eight weddings are held a year and a similar number of baptisms.

There is a wonderful and strong Choir who sing at the festival services and weddings/funerals if requested, adding to the quality and popularity of services as well as performing several choral concerts a year.



A large recreation ground is situated behind the school, with a football pitch, cricket nets and children's playground. The recently built Community Centre overlooks the recreation ground and is frequently used for wedding receptions, birthday parties, Pop-in-and-Play, Harvest Festival lunches, Plough Sunday Ploughman's lunches, Pilates/Yoga Sessions, a 'SWIFTS' monthly coffee morning for the elderly within the community and many other events. The hall and grounds together offer a wonderful venue for many popular activities and events including the annual Village Flower and Produce Show, the School Fair, the HbT 5k charity run. A large celebration took place for the Queen's Diamond Jubilee and there is a dedicated committee who plan regular events on the recreation ground.

The George and Dragon pub in HbT is a recently renovated coaching inn offering great food as well as accommodation. Its private dining room can be booked for special occasions. At the north end of the village is a well-stocked village store, several small shops/businesses and a popular tea-room/café called the Tea Cosy.

There are 50 people on the Electoral Roll and a weekly congregation at St Peter's of about 20 swelling to 150 for festival services. Regular attendees are of the older

## St Mary's the Virgin – Vernham Dean



In the top left-hand corner of Hampshire, right on the Wiltshire border, Vernham Dean is four miles up the valley from Hurstbourne Tarrant. The parish of Vernham Dean is really a collection of seven dispersed settlements. There is what is known as the village, which is Vernham Dean, and then Vernham Street, Vernham Row, Littledown, Vernham Row and parts of Henley on the Wiltshire border, plus the other part of Upton.

Near the top of the Bourne Valley the village is in an exceptional landscape, and so is a base for walkers and cyclists. Each summer it hosts the Test Valley Tour, a cycle event with courses of differing lengths and difficulty.

The hall is where the Parish Council meets, the Church holds its Christmas Fair, the WI meets, the regular 'Film Night' shows current releases, the monthly Coffee Morning takes place, and much more happens. The WI has members from all of the villages for a long way down the Bourne Valley, and also those on the downs to the south of the village. 552 people live here. Those who work, which is a substantial proportion as we have many younger families, generally commute to the surrounding towns, with some to London, although there are one or two businesses operating from the village, including a retail design practice.

St Mary's sits on top of the hill to the north of Vernham Dean, with the Old Vicarage adjacent and Vernham Manor about a quarter of a mile away. It is much nearer to the settlement of Vernham Street than it is to Vernham Dean. There is said to be a tunnel connecting the church and the Manor, but only the Manor end has been seen in living memory. There has been a church on the site of St Mary's for over a thousand years, but in the middle of the nineteenth century the church was burned out. The rebuilding in the Victorian manner created what a previous Incumbent called a 'wonderfully quiet and peaceful place of worship', which is a truly perceptive description of our church.

St Mary's can hold about 130 people, including the pews on the gallery. We have about 20 people on average in the congregation, which has a not exclusive preponderance of older members, but this rises greatly at festivals and for the Remembrance Sunday service. We have an average of 2 - 3 marriages and 2 - 3 baptisms each year. There are 57 people on the electoral role and an LCG of seven.



## St Peter's - Linkenholt

St Peter's joined Vernham Dean parish in 2020 and is currently being used as a festival church. The beautiful downland village of Linkenholt is situated right at the heart of a 2000-acre estate, 425 acres of which are maintained as woodland - the remainder being very effectively farmed. The village, also, has its own very well-run shoot. This privately-owned and well-maintained 'estate village' has a long history and the Manor of Linkenholt can be traced back to just prior to the Domesday Survey.

Given all that history it is surprising that there are still only a total of twenty-two houses within the village – from the manor house to the tiniest of cottages. Things certainly move slowly in Linkenholt!

Once all the houses in the village were occupied by those working on the estate, but now most of the houses are occupied by a wide cross-section of residents, most of whom have no attachment to the agricultural way of life; but they do, all the same, appreciate the advantages of living somewhere so historic and picturesque.



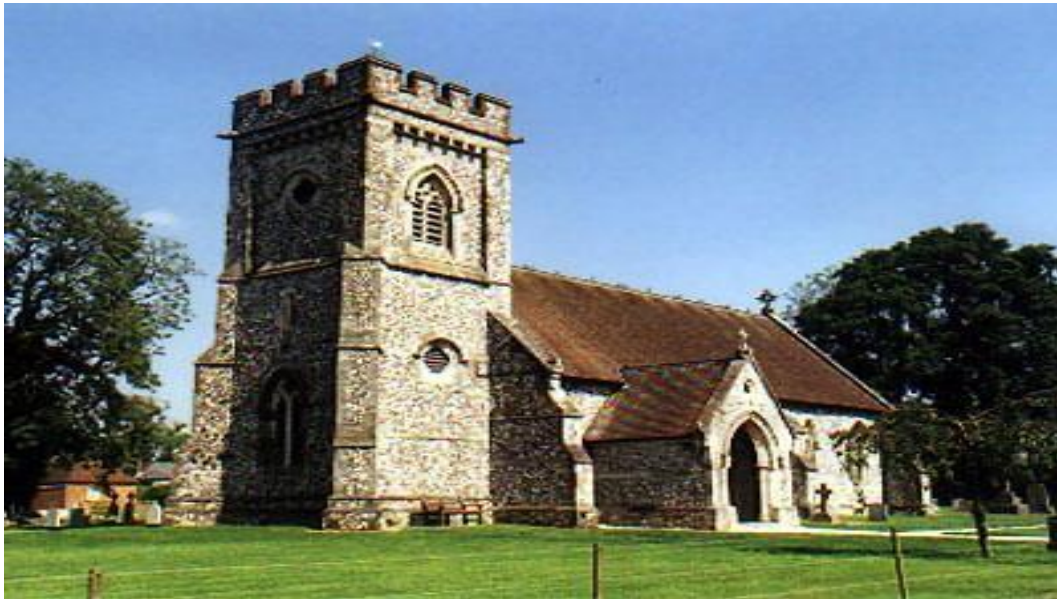
The cricket ground (which has been featured in films) and St. Peter's church are right at the heart of the village and are central to village life. Finally, a charitable trust runs a very popular camp site within the village which enables children of all ages to learn about farming and the countryside. All group visits are carefully organised and pre-booked; and are always well-supervised.

St. Peter's Church is Grade II Listed and a highly distinctive flint-built church built in 1871 by William White. The church is a rebuilding in Early English style of a Norman church incorporating an original doorway, one window, and a font. The Norman font with its beautiful chevron ornamentation is of particular interest. St. Peter's, one of the tiniest downland churches in Hampshire, can seat a congregation of 50 comfortably; and there are always extra chairs available, if needed. For the popular Carol Service, however, there is standing room only for many!

## St Barnabas' – Facombe

Facombe, at 800 feet, is the highest point in the district, affording splendid views across the North Wessex Downs. There is evidence of settlement dating back to the 9<sup>th</sup> century and remains of the 14<sup>th</sup> century manor house and crofts can still be seen. Mainly a working village with about 80 people, approximately half of the properties house people who work in the Manor and on the estate and the other half are rented out. Facombe is now part of a four-thousand-acre estate. The estate is mostly arable with a large flock of sheep and everyday life is centered on the farm. It has a large, wooded area.

Each winter the gamekeepers are kept busy with the pheasant shooting and for much of the year rearing and looking after the birds takes up a lot of their time. As with Linkenholt, despite the small population there is nevertheless a wide range of age groups, which is important to the survival of the community.



The village has a pub called The Jack Russell Inn which has undergone a major transformation, along with the village hall and pond. The main manor of Facombe was originally at Netherton, where the church was dedicated to St Michael, but little now remains. The present manor house is on the site of the old Facombe Upstreet manor.

The little church of St Barnabas, in the centre of the village, was built in 1866 of stone and flint in Gothic style. The 12th century font and several memorial tablets were brought to the new church from St Michael's.

The church is currently being used as a festival church and is popular for weddings and baptisms and seats 90-100. There is a small electric organ which used to be played, whenever possible, by visiting organists from other parts of the Parish.

# ROLE DESCRIPTION

This is a substantial role is for an Associate Priest who will lead, support and nurture the inhabitants of these diverse parishes and build on recent achievements to develop the mission of the Church in the community and ensure pastoral needs are met. It is for an experienced leader who will carry significant oversight and strategic development responsibilities and play a major role in shaping collaborative leadership across the Parish. As our Associate Priest we are seeking someone who will:

## Spirituality

- Be a creative and imaginative spiritual leader, pointing all towards Christ.
- Be able to discern prayerfully how to connect to congregations and in our communities in deep and meaningful ways

## Worship and Preaching

- Be able to express the Gospel through actions and words so allowing people to discover an experience of belonging, to consider the call of Christ upon their lives and to learn to become disciples of Christ.
- Have an aptitude to inspire and revitalize the Church family.
- Be willing to share the lead in worship with others and encourage others to contribute.

## Leadership and Collaboration

- Be a servant leader and proven team player, committed to working collaboratively with the Rector of Pastrow and the various teams in the parishes, and can lead or be a team member, as appropriate.
- Be an effective delegator and decision maker, able to manage their workload and capable of working under pressure.
- Be a capable chair of meetings who will ensure that voices are heard and valued and also clear decisions are reached and implemented.
- Work effectively with the Pastrow Family teams to further the mission of Jesus Christ to the communities we serve.



### **Discipleship, Learning and Nurture**

- Be creative in their approach to Christian discipleship and spiritual growth, strongly committed to seeing God's people grow and mature in faith and use their gifts in God's service.
- Actively encourage our home groups and others in their discipleship.
- Lead or co-lead discipleship, nurture courses and is committed to the growth of small groups.

### **Evangelism and engagement with social justice**

- Develop innovative ways and times when people can be reached to take part in the Christian community.
- Make our churches more relevant to daily life through involvement with our wider village communities.
- Be committed to working with and further developing our relationships with local schools and with young people beyond schools.



### **Pastoral Care**

- Develop further pastoral care and outreach in our communities.
- Model and attend to good care of self and, where relevant, family.

### **Stewardship and Parish Organization**

- Exhibit and proactively encourage generosity in the discipleship of church members, in the giving of their time, talents and money.
- Bring and display the proven ability to plan, organize, manage and chair meetings and communicate effectively with the clergy team, Churchwardens and Parish Office.
- Play a significant role in helping the Pastrow Ministry Team to re-shape the organization of the Pastrow Family to reflect a growing and sustainable parish.

### **Ecumenism and Links with other bodies**

- Be committed to working with local churches and building links with other organisations wherever possible.
- Play an active part in Deanery (through chapter and synod) and Diocesan life.



The role description should always be read in conjunction with the [Guidelines for the Professional Conduct of the Clergy](#).





# Finances

In becoming a single parish, we have a road map of integration into a single bank account and accounting system that will ensure transparency and efficiency as we move into a new future of governance, details of which can be found [here](#).

There can be little doubt that the COVID years have had a negative effect on income, but LCG's are working hard to regain the severity of the economic downturn. Several LCG's have successfully managed major fundraising challenges to maintain and upgrade their churches. Much of the income of each of our churches comes from parishioners who do not worship regularly but feel that the church is very much at the centre of village life. Many of these want to ensure that through their support of annual fetes, harvest lunches and suppers and attendance at so many other church functions that these places of worship that host so many significant life events will be there for future generations.



Agency transactions (i.e. not our money)	Opening Balance	Income		Expenditure		Current Balance
		Office Fees	Other	Office Fees	Other	
Collection for ...	£ —	£ —	£ 505.00	£ —	[£ 460.00]	£ 45.00
Gravedigging	£ —	£ 70.00	£ —	[£ 70.00]	£ —	£ —
Office Bellringing	£ —	£ 25.00	£ —	[£ 25.00]	£ —	£ —
Office Choir	£ —	£ 25.00	£ —	[£ 25.00]	£ —	£ —
Office Clergy Fee	£ —	£ 259.00	£ —	[£ 433.00]	£ —	[£ 174.00]
Office Organist	£ —	£ 140.00	£ —	[£ 70.00]	£ —	£ 70.00
Office Verger	£ —	£ 175.00	£ —	[£ 35.00]	£ —	£ 140.00
Office WDBF Fee	£ —	£ 1,352.00	£ —	[£ 497.00]	£ —	£ 855.00
Pass to LCG	£ —	£ 682.00	£ 1,491.40	[£ 217.00]	[£ 1,491.40]	£ 465.00
<b>Totals by Agency</b>	£ —	£ 2,728.00	£ 1,996.40	[£ 1,372.00]	[£ 1,951.40]	£ 1,401.00

## Account Balances

	Opening	07-Apr-24
Pastrow Cash in Hand	£ —	£ —
Pastrow Current	£ 14,197.66	£ 5,239.15
Pastrow Savings	£ —	£ 6,552.53
	£ 14,197.66	£ 11,791.68

## Fund Balances

	Opening	07-Apr-24	
Unrestricted	£ 7,758.12	£ 7,299.73	
Designated	£ —	£ 398.94	
Designated	£ —	£ —	Closed
Designated	£ 552.53	£ —	Closed
Designated	£ 30.01	£ 30.01	
Designated	[£ 140.00]	£ —	
Restricted	£ 5,997.00	£ 2,662.00	
Agency	£ —	£ 1,356.00	
Agency	£ —	£ 45.00	
	£ 14,197.66	£ 11,791.68	

# The Vicarage

The clergy house is named The Vicarage, and was built in 1986 at The Dene, Hurstbourne Tarrant. It is a four-bedroom, detached house with a double garage, on a plot about 15 metres wide by 53 metres deep and faces south-east onto the A343, the Andover to Newbury Road. It has liquefied gas central heating and all rooms have fitted carpets except the kitchen and utility room (which have cushion flooring). A burglar alarm and a TV surveillance system for the front entrance are installed. It is double-glazed throughout.



## **Downstairs**

The rooms comprise a fitted kitchen (3.55m x 4.4m) and utility room (2.98m x 1.42m); a sitting room (4.15m x 6.3m) with an open fire, glass doors at the rear leading to a small patio, glazed double doors to the front room (4.15m x 3.74m), and solid double doors to the hall. There is a downstairs cloakroom (1.4m x 1.45m) and a hall. The study/office has a good size fitted cupboard and glass doors to the rear garden. It leads off an outer hall so that visitors to the office need not disturb activities in the main house.

## **Upstairs**

There are two front bedrooms (one 4.17m x 3.08m with a fitted wardrobe, and the second 3.02m x 2.85m also with a fitted wardrobe); looking out over the rear garden the main bedroom (4.14m x 5.2m) has a large, fitted wardrobe and en-suite shower and lavatory (1.5m x 2.5m); a fourth bedroom (3.03m x 3.11m) has a fitted wardrobe. The family bathroom with fitted shower is 2.48m x 2.86m. The airing cupboard and utility cupboard are accessed from the landing.

## **Outside**

The area to the front of the house is about 15m x 16m and is half tarmac for parking and half lawn. Beneath the lawn is buried the tank for the liquefied gas to fuel the central heating. The double garage is about 6m x 6m.

The rear garden is about 15m x 24m with large lawn, mature shrubs and trees and a small patio area outside the sitting room. The soil is chalk and flint in this part of Hampshire (as can be seen from the vernacular buildings) but it will support a surprisingly wide variety of plants. The garden has been well maintained and is a quiet haven.

## **Miscellaneous**

Although not close to St Peter's church, which is at the edge of the village on the St Mary Bourne road, The Vicarage is only a short walk to the village shop. The shop, which is open seven days a week, takes in dry-cleaning and sells a wide range of groceries, meat, produce and newspapers. Bread and pies are baked in-house daily. Cash is available from the Post Office counter. A network of public footpaths criss-crosses the village (which is sited on the Test Way) and its surrounding fields.

‘From his fullness we have all received, grace  
upon grace.’  
John 1:16

## HOW TO APPLY

A full application pack, along with Terms & Conditions, is available from the Diocesan website, [here](#).

For an informal conversation about the post please contact:

Revd Alex Randle-Bissell  
Rector of Pastrow  
07717 778853  
[revalex@pastrowfamily.org.uk](mailto:revalex@pastrowfamily.org.uk)



The Rt Revd David Williams Bishop of Basingstoke  
01962 737343  
[Bishop.david@winchester.anglican.org](mailto:Bishop.david@winchester.anglican.org)



Diocesan Office, Wolvesey, Winchester SO23 9ND t: 01962 897082  
w: [www.winchester.anglican.org](http://www.winchester.anglican.org)

 @CofEWinchester

 [www.facebook.com/CofEWinchester](http://www.facebook.com/CofEWinchester)



# Pastrow Family

Churches sharing the love, grace and truth of Jesus Christ