



Rector

The Benefice of Compton, Hursley and Otterbourne

In the Deanery of Winchester



Parish Profile

Index

Welcome to Winchester Diocese	3
Winchester Deanery	4
Introduction	5
Our Vision	6
Our Church Life	7
The Parish of Compton and Shawford	8
The Parish of Hursley	9
The Parish of Otterbourne with Allbrook	10
Our Benefice Team	11
Our Organisation	12
The Rectory	13
Financial Information	15
Role Description	16
Appendix 1 Sample Rota	17



Welcome to Winchester Diocese

Thank you for your interest in coming to minister here in this Diocese.

We serve a whole range of diverse communities, from the historic city of Winchester with our glorious Cathedral, to the great port city of Southampton, the burgeoning boroughs of Basingstoke, Bournemouth, and Christchurch, thriving market towns such as Andover, Alton, Alresford and Romsey, and innumerable picture-perfect Hampshire villages. In all that there is much wealth – but there is also significant deprivation too, especially in our large urban conurbations where our churches are supporting some of the diocese’s poorest communities.

In every context, we are committed to making the love and life of Jesus Christ known, through our churches, schools, and chaplaincies in a way that makes a tangible difference to those communities and their people. We do that through our common commitment to ‘Walking the Wessex Way’: in Winchester’s past we find a rich heritage of serving, learning, growing and loving which inspires us for the future.

In many ways the Diocese of Winchester is in transition, as is the world around us. In parish ministry we seek people who are aware of the challenges that we face, but who are motivated above all by faith, hope and love in addressing them. We welcome those who are committed to help God’s church to be the very best it can be, in the power of the Spirit, releasing all God’s people into the mission and ministry to which they are called. And we recognise, too, our need to develop in diversity.

We are excited by the opportunities before us, and warmly invite applications from those who want to join us in addressing them.



The Rt Revd Philip Mounstephen
The Bishop of Winchester



Winchester Deanery

The Area Dean of Winchester writes:

Welcome to Winchester Deanery, home to some key civic institutions including the Royal Hampshire County Hospital, HMP Winchester, the University of Winchester and Hampshire County Council. This is a diverse and lively Deanery that has communities ranging from rural hamlets to urban post-war estates and new developments. This diversity is mirrored in a wide and wonderful range of ministerial contexts and authorised forms of ministry. Our Deanery includes the mother church of the diocese, Winchester Cathedral.

We seek to follow Jesus with passion and humility, committed to realising the diocesan vision to be a community of service, learning, growth and love.

As a Deanery we aspire to be community focused upon mutual care and support, prayer and learning, loving each other even when we might disagree.

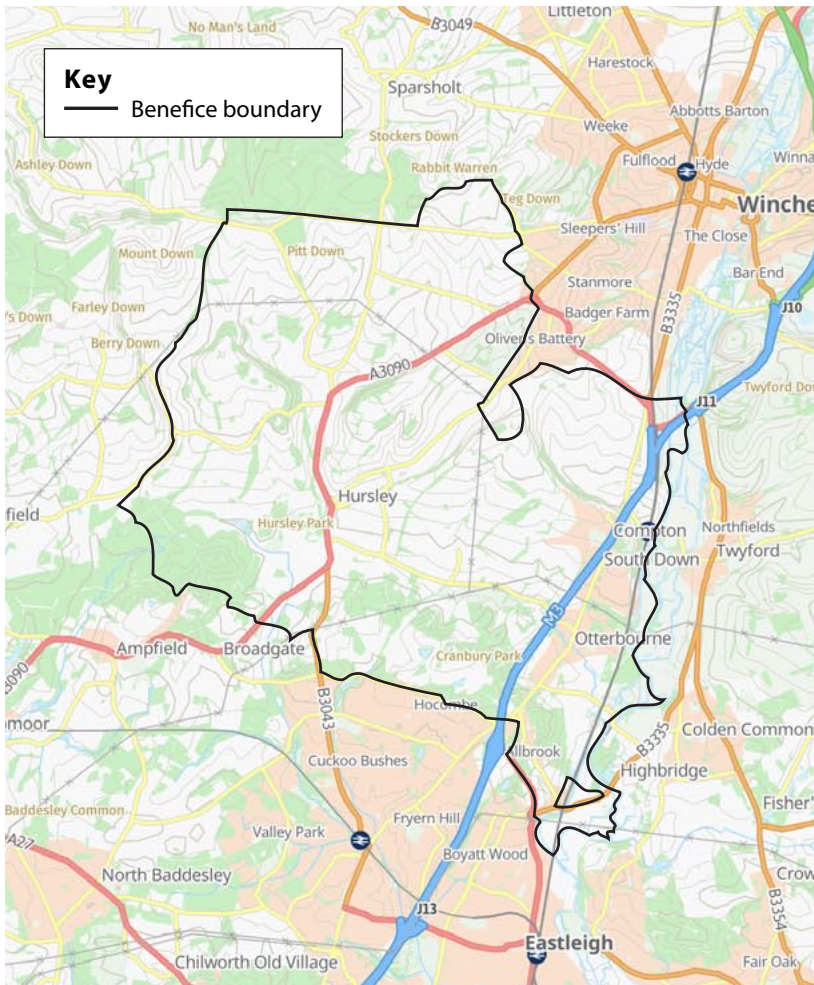
If God is calling you to live and work here you can be assured of a warm welcome, and in the meantime please be assured of our prayers for this time of discernment.



Liz Stuart
Area Dean of Winchester

Introduction

The benefice of Compton, Hursley and Otterbourne lies to the south west of the city of Winchester. Abutting the South Downs National Park on its eastern side and lying between the world-famous chalk streams of the Rivers Itchen and Test, it is an area of great natural beauty.



The benefice consists of **All Saints' Compton**, **All Saints' Hursley** and **St. Matthew's Otterbourne**. These three churches, ranging architecturally from medieval to Keble to Edwardian, each have their own Parochial Church Council: the three have worked closely and amicably together since the formation of the benefice some sixteen years ago.



All Saints' Compton

On a lighter note is the **Churchwardens' Challenge**, and over several years we have walked the benefice bounds, walked between the three parish war memorials, and walked the river, finishing at Winchester cathedral.



All Saints' Hursley



St. Matthew's Otterbourne

Our Vision

Our vision is to be a welcoming, progressive, and inclusive Christian family, where all feel welcomed and loved.

Looking to the future, particular areas we wish to focus on include:

- To nourish, encourage and increase contact with all age groups across the benefice to grow Christ's mission here.
- Develop further the pastoral care and outreach in our community.
- Continue building on our relationships with our three Church of England schools across the benefice.
- Be innovative in the ways and times when people can be reached to take part in the Christian community.
- Capitalise on the experience and skills of the new Rector to further our vision while ensuring that they are fully supported.



Our Church Life

Being a welcoming Church to everyone is very important to us in the life and mission of our parishes and our services as we try to cater for a wide variety of preferences. We offer a range of worship style from BCP services to Parish Communions and All Age Worship services. All three churches are open to the public every day and are used regularly as places of peace and reflection.



The service pattern over recent years has been Sunday service at 09:30 in Otterbourne, 11:00 in Compton with Hursley alternating between 09:30 and 11:00. One Sunday a month at each church is a predominantly lay-led family service with any fifth Sunday being celebrated as a whole Benefice service at one of the churches in rotation. There is a mid-week BCP Holy Communion service in Compton with a loyal and regular attendance. Led by a robed choir, Choral Evensong is celebrated on the first Sunday of the month at Otterbourne and at Christmas the service of Nine Lessons and Carols is currently rotated between Compton and Otterbourne. Our three-hour Good Friday devotion service of words, music and visual contemplation has thrived and grown over the years, as has the Memorial Service for All Souls which welcomes bereaved families to commemorate the lives of loved ones. (See appendix for more details)



CELEBRATE CHRISTMAS

We invite you to join us at All Saints' Church

24th December 4pm Crib Service
Family service, children welcome to wear their nativity costumes!

10.30pm Christmas Eve 'Midnight' Mass

25th December 10.30am Christmas Day Family Communion

WWW.CHOBENEFICE.CO.UK

The Parish of Compton and Shawford

A warm and friendly atmosphere is the hallmark of the parish of Compton and Shawford despite the fact that we are divided into four sections by a motorway and the Downs. We are semi-rural with the advantages of a railway station, a park and ride and an excellent bus service connecting us with Southampton and Winchester. We are also lucky enough to have farm shops, a popular pub, a convenience store with post office, a garden centre and other useful businesses. One of the joys of life in our villages is that wherever you live in the parish, walks through countryside, woodland, downland and along the chalk stream are on your doorstep.

Our Community:

A wealth of social and sporting activities, organised largely by volunteers, offer many opportunities. There is vibrant inter-generational tennis, football, cricket and a specific MUGA hard court for pickleball, netball, basketball etc. A well-equipped Pavilion is used as a social hub for talks, suppers, quizzes and folk music nights. We also benefit from a scout hut and a renovated Victorian village hall; the venue for the bi-annual pantomime written and performed by parishioners. Tickets are at a premium! We have a well-established WI. Coffee lovers and ice cream

connoisseurs can feast at Platform 1 café, which is also the home of the Bridge Club.

Church Life:

Our first Rector was appointed in 1188 and the coming of the railway, coupled with an increased population, led to an extension in 1905. We have continued to keep the church in good order, with subsequent additions of a south porch, toilet and a safe welcoming entrance with glass doors. The beauty of the church is enhanced by the music provided by our regular organists and robed choir. Compton C of E Primary School regularly hold their own services in church and perform enthusiastically at our key services, as do the Scouts on Remembrance Sunday. The donated church field provides parking for these larger services and school activities. We also have a weekly BCP Holy Communion service. Underpinning all these services is a skilled team of flower arrangers and dedicated volunteers who keep the church clean, the churchyard tidy, produce and distribute the parish magazine and provide much needed refreshments.



The community is very supportive of the church both financially and with their labour. Nevertheless, we are acutely aware that we are an ageing congregation and need to attract a younger demographic for the church to thrive in the future.



The Parish of Hursley

The parish of Hursley includes the villages of Hursley, Pitt, the hamlets of Bunstead and Ladwell and half the hamlet of Silkstead (the other half is in the parish of Compton). It is located on the A3090 between Winchester and Romsey and is joined to Otterbourne, Compton and Shawford by Poles Lane. Pitt village is on the A3090 just outside the Winchester boundary and includes the South Winchester golf course where there is the possibility of future housing development.

The church of All Saints sits in the middle of the village of Hursley, opposite a butcher's shop and the community shop and post office, run by volunteers. There are also two public houses. IBM's UK laboratories are situated behind the village in Hursley Park with their offices in Hursley Park House. Situated within the IBM complex is Incuhive, a hub for small independent businesses. The old estate of Hursley Park is now divided into three big farms.

The village of Hursley is small, with about 220 properties. It was originally an estate village and has older properties including a terrace of small Tudor cottages as well as late twentieth-century developments. There is social housing for the elderly in Pelican Close and Keble Close

as well as a couple of other individual properties. A village group organises transport to medical appointments for the elderly and infirm. The village has a parish hall which is currently occupied on weekdays by a day nursery and is available for hire on evenings and weekends. John Keble C of E Primary School is a feeder for King's School in Winchester and holds regular services in the church. There is an active village association which holds events regularly throughout the year, some of which are held in the church.

All Saints' Church, Hursley was rebuilt in 1846/7 by John Keble who became Rector of Hursley in 1836. John Keble and his wife are buried in the grounds next to the Heathcote Mausoleum, which is owned and maintained by the Monuments and Mausolea Trust. Richard Cromwell is buried in the crypt which is sealed off.

It is a large church for the size of the village and has been known to seat 250 people for a funeral. The roof has been extensively repaired and new fuse boards and wiring installed. A refurbishment plan has recently been agreed by the diocese and will be starting soon. This will be to install a toilet within the vestry and a hidden kitchenette in the rear north-west corner. A new boiler has



just been fitted in advance of the other work. Unusually, the church tower has a ring of twelve bells.

The church holds a Christmas Tree Festival every year, in which local groups each decorate a tree according to a theme. We also hold an occasional community café in the church.



Our bi-monthly parish magazine is sponsored by advertisers and is distributed free to all (or nearly all) properties in the parish.

The number on the electoral roll is 22. Our regular congregation is small but friendly and welcoming. On Christmas Eve the whole village turns out and we get a couple of hundred people in the church.

The Parish of Otterbourne with Allbrook

The Parish is in two parts divided by a ridge of managed woodland. The higher part of the village is centred around the village common and merges with Allbrook. Within the lower section, at the bottom of the hill, is St Matthew's Church with Otterbourne Church of England Primary School immediately behind it. Beyond that is the village hall. The Benefice Rectory is situated opposite the Church. There are houses and businesses to both sides of the main road with various housing estates behind them. The Parish has its own bi-monthly magazine which is delivered free to all the houses in the Parish with a current circulation of around 1000 properties. There are an estimated 1700 - 2000 people in the Parish.

The church worshipping community is around 60 with most Sunday Services having 30 to 40 attendees. The church is very child friendly and has started to attract a good number of young families. There is a children's club on each of the two monthly Parish Communion Sundays. The make-up of the congregation is a little unusual in that it attracts many people from outside the parish, who are looking for a friendly, cheerful village church. The church is left open to visitors every day and is used regularly by the local community as a place of peace and reflection.

The main church was dedicated in 1839 and is of a Victorian decorated style. There is an excellent sounding 1875 Lewis organ, and the church is the base for the Benefice's robed choir. There is an attached church-room of good size with kitchen and toilets making it suitable for choir practice, coffee mornings and benefice meetings.

Funding the upkeep of the church is a challenge but the introduction of the Parish Giving Scheme has ensured some much-needed predictability of income. Also, the introduction of a card reader within the church has helped improve donations. A social and fund-raising team organises various events with a Village Festival in the Summer, a Christmas Fair and Quiz night in the Autumn together with an Easter Fun Day and a recently introduced jigsaw Festival in the Spring. Whilst these events provide much needed funds, they also help cement the churches involvement with other village organisations and families. There is a monthly Monday coffee morning that attracts many of our retired community.

Otterbourne C of E Primary School holds

regular services within the church and the school has a close relationship with the



Rector and Foundation Governors who provide advice and give assistance within the school. There are two care homes in the village that very much appreciate regular visits from the Rector.

Immediately to the front of the church is the parish war memorial. Responsibility for the memorial lies with Otterbourne Parish Council but St Matthew's traditionally organises the Remembrance Sunday Act of Worship both at the memorial and within the church, attracting around 200 people.



Our Benefice Team

There is an active support team of the laity and churchwardens, and a growing number willing to use their skills in ministry and church organisation.



Keith Whale
Licensed Lay Reader



Eleanor Blachford
BCM Worship Leader (Takes Family Services)



Gillian Macdonald
Bishop's Permission to Preach



Dawn Morris
Benefice Administrator

Our Organisation

Governance

Governance is provided by the PCCs, which each meet four or five times a year.

Each PCC has the responsibility of co-operating with the incumbent and ministry team in promoting the whole mission of the Church, pastoral, evangelistic and social.

Each PCC has maintenance responsibilities for their own church fabric, fund raising and churchyard.

Coordination

The Rector, Churchwardens and Benefice Administrator meet regularly to plan and coordinate services across the Benefice three months in advance.

The Rector is supported by the Churchwardens and Deanery Synod Representatives.

There is a part-time Benefice Administrator who assists the Rector with Benefice wide matters, including funerals and marriages.

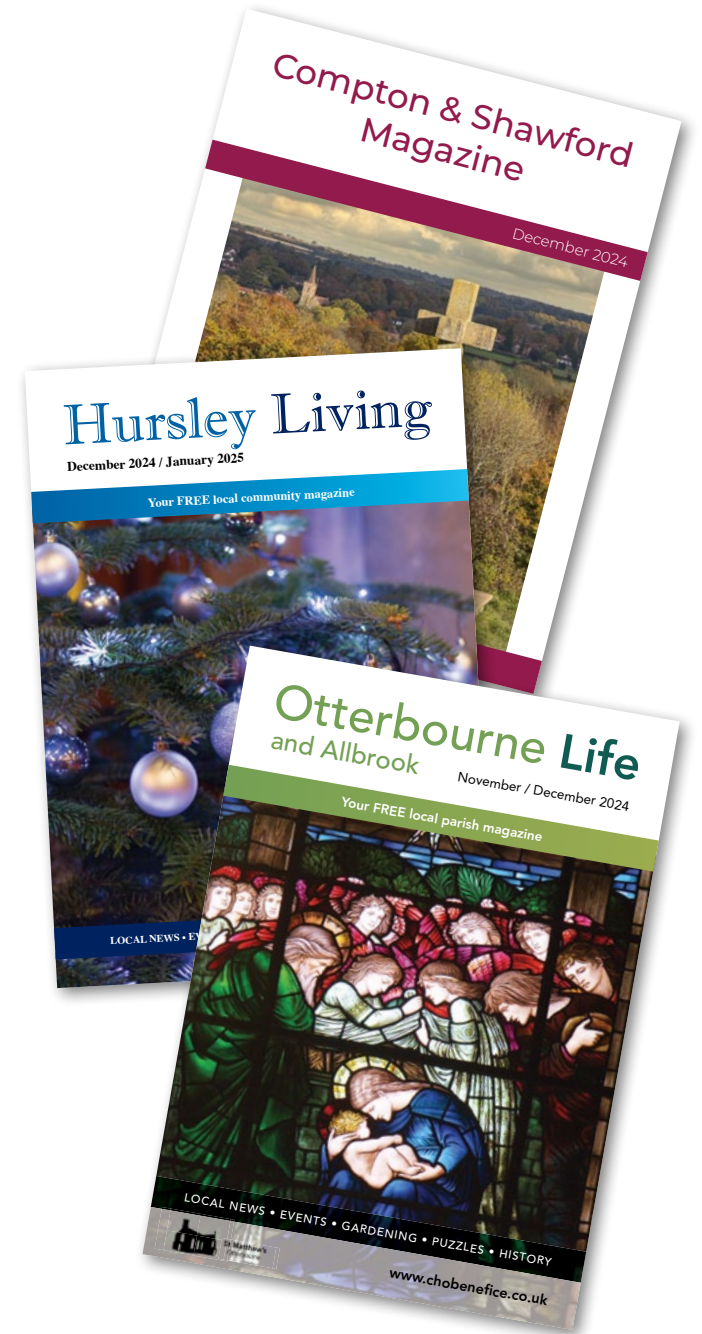
Communication

Each Parish has its own Parish Magazine published either monthly or bi-monthly.

There is lay managed Benefice website and local social media input of church events and activities.

www.chobenefice.co.uk

A monthly benefice pew sheet is provided in each church detailing services and current community events.



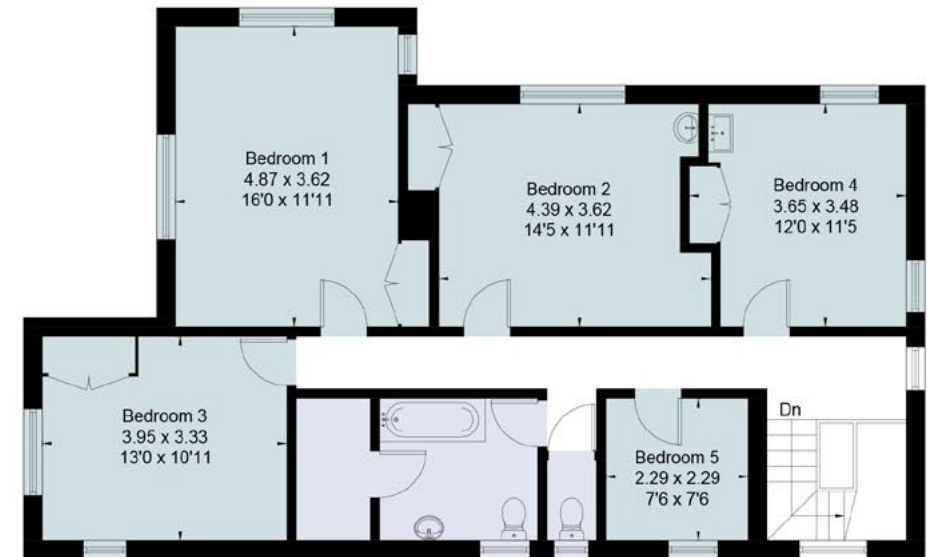
The Rectory

The Benefice Rectory is located opposite St Matthew's Otterbourne and is of a good size with 5 bedrooms, a study just inside the front door and large grounds mostly set to lawn.

(See Floor Plan on next page)



Approximate Floor Area = 217.2 sq m / 2338 sq ft
 Store = 5.7 sq m / 61 sq ft
 Total = 222.9 sq m / 2399 sq ft



Ground Floor

First Floor



This floor plan has been drawn in accordance with RICS Property Measurement 2nd edition.
 All measurements, including the floor area, are approximate and for illustrative purposes only. @fourwalls-group.com #81065

Financial Information

Compton

Regular and ad hoc donations, along with the associated Gift Aid, normally total around £40,000. When combined with statutory parochial fees, there are usually sufficient funds to cover our annual contribution to the Common Mission Fund, plus the cost of running the church, such as utility and insurance bills, the Benefice Administrator, organists and sundry clergy expenses. However, this is a fragile equilibrium, with costs on an upward trend and regular giving in decline.

We also incur significant costs in maintaining the churchyard, so we're currently looking at ways to manage the area more cost effectively, along with the help of a recently formed merry band of volunteers. There is usually sufficient income from the monthly parish magazine to cover the churchyard costs.

Additionally, the cost of repairing and maintaining the church is a constant and unpredictable challenge which often results in an annual overspend, although ad hoc fundraising (such as sponsored events and a well-supported open gardens day) can help to balance the books. When asked for funds

for major projects, people usually respond generously.

For the past few years, reserves have totalled around £60,000, including roughly £26,000 in the unrestricted General Fund.

Hursley

With regular income and outgoings including the Common Mission Fund we just about break even. We have been able to pay our full share of the Common Mission Fund for the last few years. In 2023 we received £11,526 from 10 regular givers. The General Fund balance at 31 December 2023 was £492 for current ac plus £83,661 deposit ac. Plus we had £94,559 in designated and restricted funds. We are in the process of having building work done – toilet, kitchen and a completely new heating system (heating hasn't worked since Christmas last year). Since the beginning of 2024 we have already paid large invoices for architectural services and expecting more large outgoings for the building and materials in the coming year. We should have enough funds to complete this work with our existing funds plus a legacy donation.

Otterbourne

We have been able to meet our Common Mission Fund quota in total over the last few years. Our General Fund is usually close to breakeven each year, depending on the level of repair expenditure required. This is only possible due to significant fundraising activity as income from giving only meets 60% of our annual costs. At the end of 2023 the General Fund balance stood at £7,400 with £17,000 in other Restricted or Designated Funds. In addition, a Reserve of £30,000 is held on our behalf by the Dioceses as a loan, which is due to be paid before the end of 2024.

Role Description

This Role Description should be read in conjunction with the vision, aims and priorities set out in this profile. We are seeking an enthusiastic priest who will encourage and challenge us to grow in our personal faith and inspire others in the community to do the same.

We are looking for a Rector who:-

Spirituality

- Nurtures their own spiritual development and practices good self-care.
- Inspires and encourages others in their faith.

Worship and Preaching

- Has effective communication skills that respect traditional forms of worship while appealing to the younger demographic.
- Encourages and grows the continued involvement of children in church service and church life.
- Embraces modern technology and other audio/visual aids to preach and teach.
- Recognises the importance of music and humour within worship.

Leadership and Collaboration

- Continues to build closer benefice fellowship

both within the parish and benefice.

- Will lead effective, focussed meetings which value everyone's opinion to reach a consensus.
- Will be encouraging and enthusiastic in taking on new challenges.

Discipleship, Learning and Nurture

- Is open and creative in their approach to Christian discipleship and spiritual growth.
- Discerns and develops the gifts of others to encourage their ministry and involvement with church.
- Leads collective worship in all three benefice Church of England Schools and encourages their involvement in their local church.
- Will develop outreach and discipleship courses and encourage the formation of small home groups.

Evangelism and engagement with social justice:

- Is energetic in exploring ways of making ministry meet the needs of a village community (i.e the full range of ages, genders, levels of faith, and availability to worship).
- Ensures the church is, and is seen to be,

open and welcoming to all.

- Discovers ways of engaging with the youth of the community.

Pastoral Care

- Will be at the heart of our parishes - understanding the challenges surrounding a rural community.
- Further develops empathetic pastoral care and outreach in our communities.
- Continues pastoral support in various residential homes.

Stewardship and Parish Life

- Proactively supports and respects the wider community and the generosity of parishioners' time, talents and money.
- Fully participates in and contributes to the life of the deanery (including Synod & Chapter) and Diocese.
- Actively participates and contributes to the wider social community.

Ecumenical

- Would welcome opportunities to share resources and ideas with other worshipping communities in the area.

Appendix 1 Sample Rota for Monthly Services

Benefice of Compton, Hursley & Otterbourne, January 2025 Services

(1st) Sunday 5th January - Epiphany

9.30am Family Communion with Holy Baptism
@ Otterbourne
9.30am Parish Communion @ Hursley
11.00am Family Communion @ Compton
6.00pm Choral Evensong @ Otterbourne

Wednesday 8th January

11.00am Holy Communion @ Compton

(2nd) Sunday 12th January

- First Sunday of Epiphany

9.30am Parish Communion @ Otterbourne
11.00am Family Communion with Holy Baptism
@ Hursley
11.00am Morning Worship @ Compton

Wednesday 15th January

11.00am Holy Communion @ Compton

(3rd) Sunday 19th January

- Second Sunday of Epiphany

9.30am Family Service @ Otterbourne
9.30am Parish Communion @ Hursley
11.00am Shorter Communion @ Compton

Wednesday 22nd January

11.00am Holy Communion @ Compton

(4th) Sunday 26th January

- Third Sunday of Epiphany

9.30am Parish Communion @ Otterbourne
11.00am Family Service @ Hursley
11.00am Parish Communion @ Compton

Wednesday 29th January

11.00am Holy Communion @ Compton

Special Services

Festival of 9 Lessons and Carols by Candlelight alternating between Compton and Otterbourne. Traditionally there has been a **“Midnight Mass”** at 10.30pm at Compton and a **Midnight Mass** at Otterbourne at 11.30pm.

Ash Wednesday - “Ashing” is traditionally at Hursley.

Maundy Thursday - “Washing of Feet” and vigil at Compton.

Good Friday - 3 Hour Devotion of the Cross at Otterbourne.

A fifth Sunday in the month is a Benefice Service in each of the churches in turn.

Choral Evensong has always traditionally been at Otterbourne on the 1st Sunday of the month.