

MILTON PARISH



MILTON PARISH

Index

Contents

.....	1
Index	2
Welcome	3
Deanery	4
Introduction.....	5
Our Vision	7
Our Church Life.....	9
Our Team	12
The House	15
Role Description	16
Appendix.....	19
Back Cover	Error! Bookmark not defined.



MILTON PARISH

Welcome

Thank you for your interest in coming to minister here in this Diocese.

We serve a whole range of diverse communities, from the historic city of Winchester with our glorious Cathedral, to the great port city of Southampton, the burgeoning boroughs of Basingstoke, Bournemouth, and Christchurch, thriving market towns such as Andover, Alton, Alresford and Romsey, and innumerable picture-perfect Hampshire villages. In all that there is much wealth – but there is also significant deprivation too, especially in our large urban conurbations where our churches are supporting some of the diocese’s poorest communities.

In every context, we are committed to the making the love and life of Jesus Christ known, through our churches, schools, and chaplaincies in a way that makes a tangible difference to those communities and their people. We do that through our common commitment to ‘Walking the Wessex Way’: in Winchester’s past we find a rich heritage of serving, learning, growing and loving which inspires us for the future.

In many ways the Diocese of Winchester is in transition, as is the world around us. In parish ministry we seek people who are aware of the challenges that we face, but who are motivated above all by faith, hope and love in addressing them. We welcome those who are committed to help God’s church to be the very best it can be, in the power of the Spirit, releasing all God’s people into the mission and ministry to which they are called. And we recognise, too, our need to develop in diversity.

We are excited by the opportunities before us, and warmly invite applications from those who want to join us in addressing them.

With the assurance of my prayers as you seek God’s best next step for you,

+ *Philip*



*The Rt Revd Philip Mounstephen,
The Bishop of Winchester*

MILTON PARISH

Deanery

We are a very mixed deanery with 7 benefices and 26 churches. These range from suburban, through small town and large village to tiny hamlets. There is a variety of theology, spirituality and ways of being Church and we value and respect this. Our Deanery is characterised by a supportive and collaborative environment, where clergy are encouraged to share ideas and resources, fostering a sense of belonging and teamwork. The Synod is active and focussed on supporting the mission of the Parishes. And the Chapter is friendly and supportive. A Deanery Mission Action Plan is in place and we will shortly review and enhance it. We encourage all of our clergy to play an active role in the life of the Deanery. We know that Christchurch Deanery is a great place to live and minister as together we seek to join with our Bishop in 'Living the mission of Jesus'.

Area Dean

Revd Canon Charles Stewart
Assistant Area Dean

Susan Lyonette
Lay Chair

Currently Vacant



MILTON PARISH

Introduction

New Milton is a charming market town in southwest Hampshire. The town offers a unique blend of rural tranquility and urban convenience. With beautiful landscapes, coastal access, and a rich history, it is an ideal place for both personal and spiritual growth. To the north is the New Forest and to the south the coast at Barton-on-Sea, to the west is Highcliffe and to the east are a number of small villages and the New Forest. The village of Milton dates back to Anglo-Saxon times. In March 1888 the railway arrived. A new town expanded rapidly following the arrival of the railway station. The name New Milton was used for the first time in 1895. New Milton encompasses Old Milton, Barton on Sea, Ashley and Bashley.

The town is a mixture of rural and urban environments with the villages of Milton, Ashley and Barton having expanded, over the years, to create the town of New Milton. The town has much owner occupied property. There is also a variety of small blocks of flats where a large proportion of the flats is rented accommodation and there are a number of social housing estates around the town.



Milton Parish serves a population of over 27,000. There are three churches in the Parish;

1. The parish church, St Mary Magdelene, is located in Old Milton. This church covers most of New Milton and all of Barton. The area covered ranges from social housing to retirement bungalows. It has a regular congregation of around 55 people.
2. St. Peter's church is located in Ashley. The area covered is generally housing from the last 40 years. There is some social housing. The congregation is small but active.
3. St John the Baptist is located in Bashley village just inside the New Forest boundary. It is a very country area. The small congregation is generally made up of people from the Parish Church with others from the village.



There is one PCC with trustees of the charity responsible for all legal and financial obligations.

MILTON PARISH

The town (according to the 2011 census data) had quite a large retired population with just over 34% over 65. The population of under 18s is about 15%. People between 45 and 65 make up 26% of the population. There has been significant change in the years since then. With a diverse population, including a significant number of families and retirees, our community is vibrant and engaged, offering numerous opportunities for outreach and connection.

There are 2 Infant schools, 2 Junior schools, 2 Secondary schools, one for mainstream students and one is an Alternative Provision Free School, 2 private schools covering primary to secondary ages.

Our churches are not just places of worship; we want to grow them as a hub of community engagement, from where we actively participate in local events and initiatives that foster connection and support.



MILTON PARISH

Our Vision

We believe God is calling us to be more visible as a beacon of hope and love in our community, actively sharing His message and transforming lives through our collective efforts.

We aim:

Worshipping

1. Our Worship

To proclaim the good news of Jesus Christ.

To honour our current styles of worship and doctrine.

To worship with reverence and awe.

To be flexible, creative and innovative in exploring other expressions of worship.

Growing

2. Spiritual Growth

To encourage discipleship and spiritual growth, for individuals and the church community as a whole, through worship, teaching and opportunities for refreshment.

To encourage every member's ministry, discovering and exercising the gifts and abilities of all.

Serving

3. Pastoral Care

To value, nurture and support each church member where they are.

To expand lay involvement in pastoral care we aim to develop and equip people to offer a wider ministry to the community, including home communion.



MILTON PARISH

Growing

4. Being more outward looking

To make our churches better known in their local communities.

To provide a living witness to the love of God in demonstrating the practical sharing of our faith.

To maximise the use of our churches by groups and individuals in the community.

To build bridges with all those who live and work in our parish.

To develop joint working with neighbouring parishes and other Christian communities.

Serving

5. Work with Children

To respond to and develop our work with children, young people and their families.

To continue making the churches a welcoming place for schools to visit.

To explore ways of meeting these needs through joint working with other clergy across the town, the wider Deanery and with other Christian communities.

Belonging

6. Ethical and Environmental work

To make sure our churches are always looking for ways to lower our carbon footprint.

To regularly include care for God's earth in our weekly intercessions.

To achieve these aims we will look to our incumbent to join with us in discerning the best ways forward.

MILTON PARISH

Our Church Life

The Parish has a rich life with each church providing it's own unique format outlines below.

St Mary Magdalene

Eucharist service every Sunday at 9:30, followed by coffee at the back of the church.

Since the start of our vacancy the Parish Church is open every Friday from 10am until 12am for private prayer.



Messy Church after school on the second Tuesday of every month except July and August.

MILTON PARISH

The Parish Church hosts Local Junior and Secondary schools services for Easter, Harvest and Christmas Carols.

A number of Civic services are held throughout the year including Christmas Carols. The rector was for many years involved in the Town Remembrance Day services.

Annual Patronal Songs of Praise festival.

Lent lunches in weeks of Lent open to all raising money for a defined charity.

Pop in Coffee morning last Thursday of every month except August attended by both church and non church people.

Members of the congregation are involved in the team leading “Open The Book” at a local infant school and some are also involved in a town wide prayer group.

Monday group meets on the afternoon of the second Monday of the month to hear speakers and have a general chat.

Our church life is enriched by a variety of activities that bring people together, from community meals and social events to collaborative outreach programs, creating a strong sense of fellowship.

Tri-annual quilt festival and various concerts throughout the year.

The Occasional Offices figures for 2024 were:

Baptisms 11 (one family at a time); Banns 7; Weddings 3; Funerals 14; Burials of Ashes 2.



MILTON PARISH

St Peter's

Since the start of our vacancy a Eucharist every Sunday at 11:15 with coffee in church once a month.

On a Wednesday at 10am the church is open for private prayer 10 – 10:30 with coffee available.

Two Parish wide services are held during the year.

There were no occasional offices held at St Peter's during 2024.

A community choir rehearses in the church each week.

A thriving nursery runs in the hall on weekdays.

St John the Baptist

Since the start of our vacancy there has been an evensong every third Sunday led by one of our Lay ministers.

There was one funeral held at St John the Baptist in 2024.

MILTON PARISH

Our Team

The main team consists of the following people who cover all three churches:

Alan Beal – Churchwarden

I and my family have been regular worshippers at St. Mary Magdalene since 1994 after we moved to the area and having first tried St Mark's in Highcliffe. During this time, I have taught Sunday school, visited baptism families, helped organise and run a family service, helped organise and run Messy Church, taken on the role of Parish Administrator and served on the PCC before becoming a churchwarden 6 years ago.



Marion Brehaut – Deputy Churchwarden

I have lived and worshiped in the parish of Milton for over 50 years. During this time I attended Sunday school. Then joined the church choir after my confirmation in 1969, where I stayed until 2020. I also became a server, and became the trainer for any new servers. I took over the role of Sacristan, in the 80's, and assisted my father who was the verger for 30 years. I am currently organising fundraising events, coordinating Shoeboxes, and plan and organise the food for Messy church. I became Deputy Churchwarden 6 years ago.



Liz Lock – Churchwarden

I have been a regular worshipper at St. Mary Magdalene since 1986 when I first brought my four year old daughter to the Sunday school, having also been married here in 1976. During this time, I have taught Sunday school, visited baptism families, cleaned the church, helped organise a family service and served on the PCC before becoming a churchwarden 6 years ago, a role of which I am extremely proud.



MILTON PARISH

Ruth Waller – Bishops Commission for Ministry - Lay Minister

After moving to the area I began worshipping at St. Mary's. My faith journey with Jesus has taken me to many places, involved in different areas of mission and ministry. As a primary school teacher, I led children's clubs and church camps in UK and France. I was headteacher of a church primary school also involved in Family services, Home groups, Worship singing and Prayer ministry. Whilst in East Sussex I cared for parents; trained for Lay Ministry, Prison Chaplain and Street Pastor Co-ordinator. Now I am enjoying serving in Milton Parish.



MILTON PARISH

Our Organisation

The Parish of Milton has one PCC for the whole Parish and separate committees for each of the churches. At present the only ones still running which are the St Mary Magdalene committee and the St John committee.

Formal accounts are only presented for the whole Parish. The finances of each church are handled by the PCC treasurer and are accounted for separately. The Parish finances are made up of the three churches plus those items that are Parish wide. We are running at a slight deficit but maintain our CMF contribution at present.

The Parish Church is within walking distance of the centre of the town. The other churches cover spread out areas and are not geographically central in those areas.

We have a Parish Office in St Mary Magdalene Church Hall which is manned by volunteers for 2 hours every weekday. We are trying to use the iKnow program to support our admin. At present it is used for handling Rotas and email communications every week with the service sheet for that week, once a month the Parish News is emailed out. Other Parish wide emails may be sent as required. Hard copies of the Parish News are available in the churches and service sheets are sent out to those who do not have emails.

There is a Milton Parish Facebook page (see <https://www.facebook.com/profile.php?id=100067507694250>).

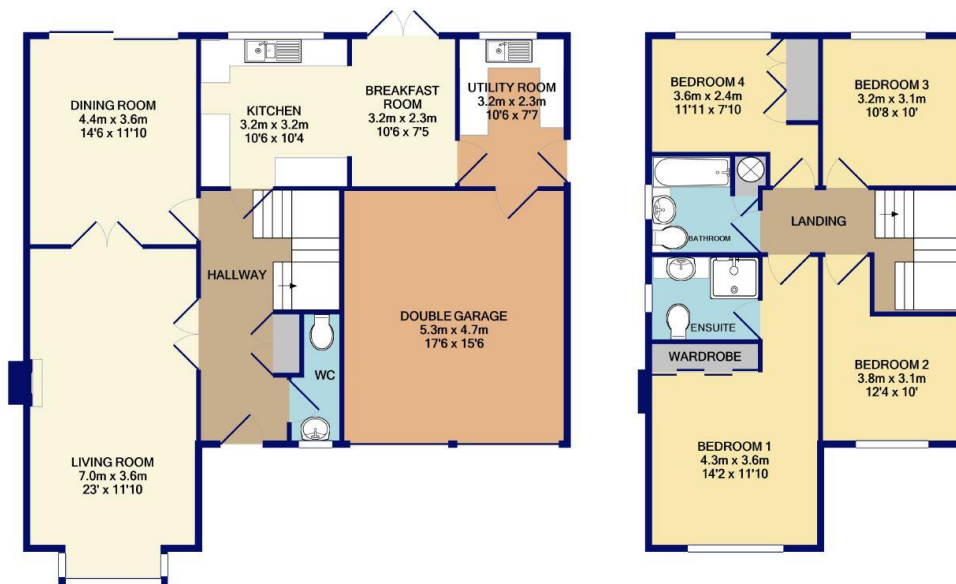
There is a Milton Parish website at <https://www.miltonparish.org>.

MILTON PARISH

The House

10 Spinacre is a detached, four bedroom dwelling in the seaside town of Barton on Sea. Located within a small close in the centre of Barton on Sea, the property is within walking distance of the seafront whilst still being within close proximity to local shops, amenities and a train station with direct lines to London.

The property offers accommodation over two floors. On the ground floor, the hall provides access to the living room, dining room, kitchen/breakfast room, utility and WC. The first floor consists of a large primary bedroom with ensuite, three additional good-sized bedrooms, and the property's main bathroom. Externally, the property benefits from a double garage and rear garden.



GROUND FLOOR
APPROX. FLOOR
AREA 106.0 SQ.M.
(1141 SQ.FT.)

1ST FLOOR
APPROX. FLOOR
AREA 64.2 SQ.M.
(691 SQ.FT.)

TOTAL APPROX. FLOOR AREA 170.2 SQ.M. (1832 SQ.FT.)
Whilst every attempt has been made to ensure the accuracy of the floor plan contained here, measurements of doors, windows, rooms and any other items are approximate and no responsibility is taken for any error, omission, or mis-statement. This plan is for illustrative purposes only and should be used as such by any prospective purchaser. The services, systems and appliances shown have not been tested and no guarantee as to their operability or efficiency can be given.
Made with Metropix ©2020



MILTON PARISH

Role Description

The role is for a priest who will lead, support and nurture the inhabitants of this town, building on the development already achieved and meeting its pastoral needs. We look for an experienced leader with good communication skills, and with a friendly personality who can communicate and build relations across all age groups. We are seeking a dynamic and compassionate leader who is passionate about fostering a welcoming environment for all, regardless of background or experience. We are committed to supporting our Rector's professional development and spiritual growth, providing opportunities for training, mentorship, and collaboration with other clergy.

As our Rector we are seeking someone who:

Spirituality:

- Leads a spiritual and ordered life of daily prayer and Bible study; who can share these gifts.
- Seeks to follow the model given us by Jesus Christ of active ministry
- Has a good balance of time with family and friends while meeting the demands of parish life.

Worship and Preaching:

- Is comfortable leading and participating in the diversity of parish services and will enrich them.
- Supports and encourages the ministry of lay people leading services.
- In preaching and other communications presents and interprets the Christian message in relevant ways, to encourage us to live and witness as Christians in modern Britain.

Leadership and Collaboration:

- Is a team player, working collaboratively with all the members of committees, the Diocese, Deanery and local group leaders.
- Is an effective delegator, good at creating teams and managing their workload under pressure.
 - Is an effective chair of meetings, allowing all to contribute, to arrive at consensus decisions and implement them effectively.

MILTON PARISH

Ecumenism and links with other bodies:

- Maintains good relations and co-operation with all the other Christian Churches in the town.
- Builds up and welcomes new members to the congregation.

Discipleship, learning and nurture:

- Open and creative and strongly committed to seeing people grow and mature in faith, using their gifts in God's service.
- Actively encourages home groups and nurtures courses such as BCMs.
- Is prepared to lead or facilitate discipleship, nurture courses and is committed to the growth of small groups.

Evangelism and Social Justice:

- Is proactive and persuasive in sharing their faith with others and can enable others to gain confidence to do the same.
- Understands the imperative of parish outreach and mission.
- Will work creatively with schools, building on current connections and services in our church.

Pastoral care:

- Is approachable and sensitive to the varied needs of our church family and the wider community; sharing pastoral care with our own team.

Stewardship and Parish organisation:

- Exhibits and proactively encourages church members in the giving of their time, talents and money.
- Brings the ability to manage meetings and communicate effectively with all involved in the day to day organisation of the Parish.
- Is open to wider involvement with our community in developing goodwill and a sense of togetherness in the value of our churches.
- Is prepared to see our churches as open for community use for a wide variety of activities during the week.

MILTON PARISH

If you are looking for a fulfilling role where you can make a real difference in the lives of others, we invite you to apply and join us in our mission to live out the love of Christ in our community.

The role description should always be read in conjunction with the [Guidelines for the Professional Conduct of the Clergy](#).

HOW TO APPLY



A full application pack, along with Terms & Conditions, is available from the Diocesan website, [here](#).

For an informal conversation about vacancies in the Bournemouth Archdeaconry please contact:

The Ven Jean Burgess

Archdeacon of Bournemouth on 01962 710962 email, jean.burgess@winchester.anglican.org

or

Jane Hammond

Clergy Appointments Assistant 01962 737310 email, Clergy.appointments@winchester.anglican.org

MILTON PARISH

Appendix

Our primary vision is that while maintaining our current style of services we grow the Parish by adding more services of varied types. We would like to continue our traditional style Eucharist service at the two churches every Sunday and have a more relaxed service at a different time. We would like to restart a Eucharist service at the third church on the third Sunday of each month with the possibility of adding more services.

We wish to restart house groups.

We wish to grow our Messy Church.

We wish to restart Sunday School.

We would like all three churches to remain with more use being made of both St Peter's and St John the Baptist's.

We would like to improve the visibility of the Parish church within the town. As it sits outside the centre of the town down a little lane it is not well known by many people. None of the churches are close to the centres of their areas.

The Parish regularly supports the Basics Bank at Lymington.

We have an active Christian Aid group in the Parish which in 2023 raised just under £15000. This was match funded by the EU to give a total of £48000. They are active every year in raising money.

The Parish Church has a number of famous graves in the churchyard and some war graves.

The Parish Church has beehives in the churchyard.

The Parish Church has recently fitted some Swift boxes to try to encourage Swifts to nest in St Mary Magdalene Church tower.

There are some bird boxes in the Parish Church churchyard.

MILTON PARISH

There are two State Infant Schools, two State Junior schools and a State Secondary school in the Parish, none of them are church schools. One of each of the Infant and Junior schools is involved with Ashley Baptist church.

St Peter's church has a thriving Nursery group using the Church Hall.

A community choir rehearses regularly in St Mary Magdalene church.

St Mary Church Hall is used for community groups.

St Peter's church is used for local groups.

St John's church hall is rented out to a business which seeks to support children and young adults with disabilities.

We have an active Parish Action Group and a recent PMAP. This group has already introduced the iKnow Church admin software, started a Messy Church service, installed a servery at the back of the church, installed a cashless giving system and updated the Parish website.

Planned renovations are taking place in the Parish Church with the help of some legacies from past members of the congregation.

The Parish Church has achieved a Bronze Eco Church award.

The Parish supports the Deanery Mission to Kinkizii.

MILTON PARISH

'From his fullness we have all received, grace upon grace.'
John 1:16

Diocesan Office, Wolvesey, Winchester SO23 9ND t:

01962 737310

w: www.winchester.anglican.org



@CofEWinchester



www.facebook.com/CofEWinchester