



Priest in Charge (3 year post)

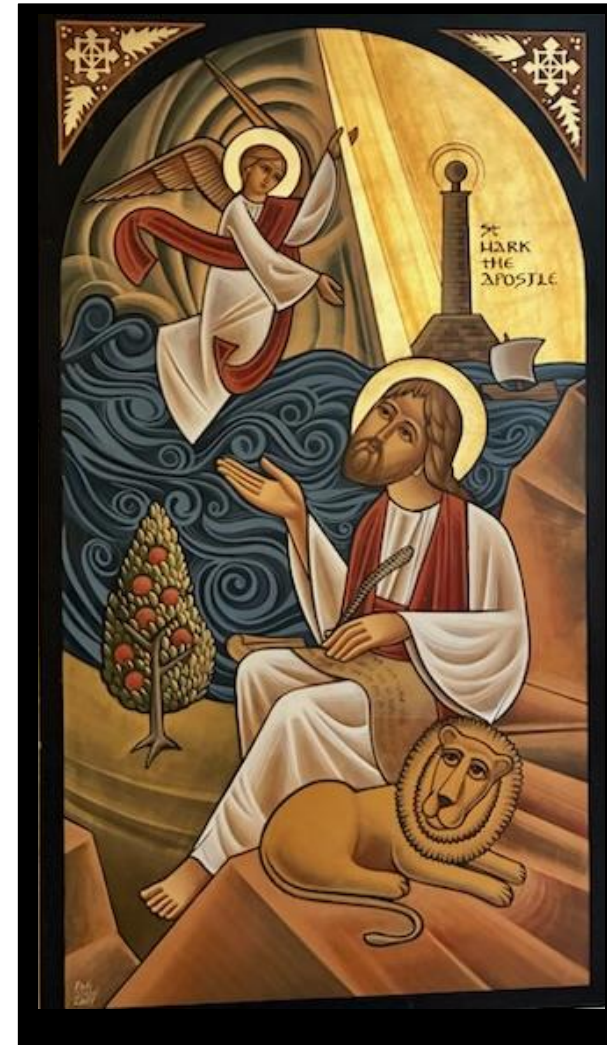
Highcliffe Benefice

Christchurch deanery



INDEX

Page	Title
3-4	Welcome
5	Introduction
6	Our Vision
7-10	Our Church Life
11	Our Team
13	Our Organisation
15	The House
16	How to apply
17	Appendix



WELCOME TO WINCHESTER DIOCESE

Thank you for your interest in coming to minister here in this Diocese.

We serve a whole range of diverse communities, from the historic city of Winchester with our glorious Cathedral, to the great port city of Southampton, the burgeoning boroughs of Basingstoke, Bournemouth, and Christchurch, thriving market towns such as Andover, Alton, Alresford and Romsey, and innumerable picture-perfect Hampshire villages. In all that there is much wealth – but there is also significant deprivation too, especially in our large urban conurbations where our churches are supporting some of the diocese's poorest communities.

In every context, we are committed to the making the love and life of Jesus Christ known, through our churches, schools, and chaplaincies in a way that makes a tangible difference to those communities and their people. We do that through our common commitment to 'Walking the Wessex Way': in Winchester's past we find a rich heritage of serving, learning, growing and loving which inspires us for the future.

In many ways the Diocese of Winchester is in transition, as is the world around us. In parish ministry we seek people who are aware of the challenges that we face, but who are motivated above all by faith, hope and love in addressing them. We welcome those who are committed to help God's church to be the very best it can be, in the power of the Spirit, releasing all God's people into the mission and ministry to which they are called. And we recognise, too, our need to develop in diversity.

We are excited by the opportunities before us, and warmly invite applications from those who want to join us in addressing them.

With the assurance of my prayers as you seek God's best next step for you,

+ *Philip*



*The Rt Revd Philip Mounstephen,
The Bishop of Winchester*

CHRISTCHURCH DEANERY

Welcome to Christchurch Deanery

Our Deanery covers an area that includes parts of the New Forest to the sea. We are grouped into 7 benefices with 26 churches. Our Benefices range from single parishes with one church to Benefices with multiple parishes and churches. These range from suburban, through small towns and large villages to tiny hamlets.

Our Deanery is characterised by a supportive and collaborative environment, where clergy are encouraged to share ideas and resources, fostering a sense of belonging and teamwork. We value and respect the variety of theology, spirituality and ways of being Church which is evolving and growing as we work together to live and serve the mission of Jesus.

The Deanery Synod meets three times a year and is another great opportunity for you to be part of a lively community, sharing in the mission of Jesus in our wonderful area. We are focussed on supporting the mission of the Parishes, and building cooperation between our parishes. We have a link with Kinkiizi and share a Lent project across the Deanery each year to support a shared project with Kinkiizi.

The Chapter is friendly and supportive, bringing an emphasis on prayer, and practical support and encouragement of one another, we encourage all of our clergy to play an active role in the life of the Deanery. Although we've had a number of changes to our deanery Clergy and continue to build our Chapter we have a strong willingness to support our clergy and their families in the demands of ministry.

We know that Christchurch Deanery is a great place to live and minister as together we seek to join with our Bishop in 'Walking the Wessex Way.

We look forward to meeting and talking with you, as you consider joining our Deanery.



Susan Lyonette
Lay Chair

INTRODUCTION

St Mark's church is situated close to the centre of Highcliffe on Sea. Bordering the New Forest to the east and north, and with the historic town of Christchurch and the resort of Bournemouth to the west, Highcliffe is a popular place to live as well as a holiday choice for many. New housing is offering both retirement apartments and family accommodation. Highcliffe St Mark Primary and Highcliffe School 11-18 are both within our Parish.

Dating from 1842, the church building saw extensive remodelling in the 20th and 21st centuries. It, together with our hall and library, is much appreciated and used by both the church fellowship and local community groups - links which are invaluable in matters of mission as well as finance.

St Mark's offers a variety of styles of worship and throughout the fellowship there is a prayerful sense of care and support for one another. The majority of our Church members are retired. Whilst St Mark's is keen to nurture its existing congregation, we are keen to grow our connections with our local schools and develop our work with families, creating a worshipping community that spans the generations.

As the body of Christ here - ***Serving God, each other and the Community*** - we seek to use the gifts and skills which God has given us. We are looking for a Vicar who feels called by God to encourage faith, spiritual development and growth in discipleship to lead us further in our life of faith and witness; one who celebrates the variety in our Church services, sees unity in our diversity and possibilities in our outreach. We are praying for someone who will teach us faithfully, with a heart for local mission and the imagination and creativity to discern God's kingdom here in Highcliffe.



OUR VISION

Serving God, each other and the Community

Our aim at St Mark's is to make church accessible, enjoyable and open to all.

We seek to be a church which partners with Jesus in sharing the Good News; being sent out into the world, both locally and globally. Our Christian faith is at the heart of our mission and we meet together to pray, to worship, and to share our love of God.

Our mission "Serving God, each other and the community" - we are keen to find ways this can be made a reality. We seek to build one another up in faith and discipleship through pastoral support, midweek prayer group, social events and Bible study. As a church that looks outwards – not just to our local community but to the wider world through our support of charities, at home and abroad. We are conscious of the very real issues of climate change, poverty, modern day slavery and natural disasters.

Although proud of our history and traditions, we are excited to work alongside an encouraging and prayerful Vicar to discover what God purposes for us and to explore new ways of worship.

As a relatively small group of people, we know that working with others is important in order to meet the needs of our community. We are eager to move forward and to look to the future.

Our vision for Breakfast @ 9 is that by learning about Jesus in a familiar and welcoming environment, the children will, as they grow up, have positive feelings about 'church' which may develop into a sustaining and sustainable faith in their adult lives.

Through the development of our website, Facebook pages, Highcliffe Dorset local website and more traditional communications we demonstrate an eagerness to engage with our local community that both proclaims the Good News of the Kingdom and responds to people through loving service.



OUR CHURCH LIFE

Serving God, each other and the Community

We believe that St Mark's is a place of fellowship offering a warm welcome to all. More than being the focus of our Sunday services our buildings offer space for a range of activities for the Church and community. We offer comfort during difficult and challenging times and a place for joyfully marking key events. We recognise there is more we could do and would like to extend our work in the community.

Regular Services	
8am Sunday mornings	Holy Communion
9am Sunday mornings	Breakfast @ 9 family worship (Lay led)
10am Sunday mornings	Parish Communion
11am Wednesdays	Communion
6pm every 3 rd Sunday	TAIZE inspired worship (LLM led)

BREAKFAST @ 9

Our all-age service of informal worship, held every Sunday at 9am in the church hall – bacon rolls, coffee, pastries – with fellowship and a Service of the Word with songs, prayers and activities.



REGULAR:

- Quarterly Quiet Days
- Lent course
- *Open the Book* team lead weekly school assemblies in the Primary School, in our Parish, as part of their overall worship rota; the children get involved wherever practicable
- Weekly one of our team goes into the Primary School for singing Christian songs with Foundation and KS1
- Monthly Services led by a small team in 2 care homes: Silverways and Highcliffe Nursing Home
- Pastoral Care team keep in touch with those who are unwell, take Home Communion, visit in care homes and make Home Social visits
- *Thy Kingdom Come* – an open Church with prayer stations
- Deanery Link with Kinkizii including our 40p for 40days Lent appeal each year
- Christian Aid and Shoe Boxes as part of our Charitable Support
- Christchurch Food Bank+ donations are collected weekly and taken to the Food Bank

Throughout the year we celebrate the major festivals with our Ecumenical partners and Community including:

- Remembrance Day service including at the war memorial
- *All Souls, Loved Ones Remembered* service
- Palm Sunday cliff top Walk of Witness
- Cliff top Easter Sunrise service
- World Day of Prayer

Other activities and charitable support are listed in the Appendix.



BAPTISMS

We are looking to further develop our Baptism ministry. We give our baptism children a book, card and a candle - and our baptism families are sent invitations to the Crib Service and the Good Friday Craft Workshop.

PRAYERS and HOME GROUP

Our weekly informal prayer group meets every Tuesday at 7pm in the church for fellowship, prayer and discussion led by a group member. A Home Group meets regularly to share in Bible Study, discussion and prayer enjoying hospitality and friendship.

SCHOOLS

We enjoy an active and friendly relationship with Highcliffe St Mark Primary School. Our team lead an *Open the Book* assembly every week, they are warmly welcomed by staff and pupils and the team have been greeted by some of the children while walking through the village. This ministry was recently highlighted in the Diocesan news.

Each year we host five services for the pupils and funded by the Church give the Foundation stage pupils a Bible Society Christmas story booklet, Years 1 and 2 a Bible Society Easter story booklet and Year 6 Leavers a copy of the Lion Graphic Bible. The church is packed with children on each of these occasions, their singing and enthusiasm is enjoyed by all. We aim to build closer relations with Highcliffe School.

We Invite:

The school, and families of those Baptised, are invited to our **Christmas Crib Service**, this is also advertised on our website and Facebook page. It is held in church with the children enjoy taking an active part in the service followed by festive refreshments. Typically around 40 children and 70 adults attend.

Our Easter Craft Workshop: is advertised in school, on our website and Facebook page as well as local community websites. It is held on Good Friday morning and is very popular as families and children enjoy taking part in a variety of craft activities. Refreshments are served and typically we have 120-130 taking part.

ECO CHURCH

In February 2024 we gained the Eco Church Silver Award and are now working towards achieving the Gold Award. Community activities such as a Green Fayre, Environmental Talks, Churchyard Biodiversity Surveys alongside the careful stewardship of our resources is moving our church towards a CNZ target; all part of our Eco Church profile.

SOCIAL

Throughout the year we hold a number of events giving opportunities for us to come together. The Harvest Supper plus Quiz, Mission to Seafarers Fish and Chip Supper and Quiz, Charity Players concerts and Sing your favourite Hymns are all popular events. Our weekly Friday morning coffee is open to all offering friendship and fellowship. The Ladies Group meets monthly for fellowship and has a programme of visiting speakers.



OUR TEAM

Ann Nash – Church Warden

I come from an education background, moving to Highcliffe 28 years ago on retirement. I joined the Church to do flowers initially, was then elected to PCC, taking on the PCC Secretary role. I have been Church Warden once before.



Sandra Channon – Church Warden

From pastoral work in secondary education, with R.E. as my main subject, on retirement I had a God-given opportunity to develop skills in papercraft as a teacher/demonstrator. The ministry of encouragement is important to me, in the fellowship and in outreach.



Susan Lyonette – Safeguarding & Deanery Lay Chair

I am the Parish Safeguarding Officer, a member of PCC and Standing Committee. I am one of the Parish Deanery Synod representatives. I also represent Christchurch Deanery as a member of Diocesan Synod



Colin Chatten – Licenced Lay Minister

Licensed in 1979 I was a Reader in Southwark Diocese until retiring from managing a busy Lloyd's Syndicate Legal Department in 1999. Upon retirement my wife Maggie and I moved to Highcliffe and I became a LLM. I have developed my interest in IT and communications.



Maureen Stringer – Licenced Lay Worker

I taught in the UK and abroad before working for an Exam Board where I managed a Professional Development and Training team. In retirement I again worked with a mission. I moved to Highcliffe in 2015, joined St Mark's and was licensed as a Lay Worker in 2018.



Sally Russell - LLM in training

Originally my vocation was in education, first in schools and later in South Sudan and Sri Lanka in an advisory role. I am now interested in mission involvement within, and beyond, the church. Due to be licensed as an LLM in October, I currently lead services in care homes.



OUR ORGANISATION

Serving God, each other and the Community

We are a diverse group of people each with different skills. As the PCC, together with the Vicar, we offer our gifts and talents to do the work of God in St Mark's, sharing the Good News of Jesus Christ. We come together to ***serve God, each other and the Community.***

We look forward to working with our Vicar to increase our focus on mission, teaching and discipleship. We are committed to enabling as many people as possible to worship in our church and to be part of our community at St Mark's.

There are a number of groups led by PCC members who oversee different aspects of our mission such as Worship Planning, Pastoral Care and Eco Church, each reporting to the PCC which meets regularly and as required during the year. We have designated Officers for Safeguarding, GDPR, Health and Safety and a PCC Secretary.

Lay Ministry support is provided by 1 LLM (and 1 in training) 1 LLW, 6 BCMs (Worship 3 and Pastoral Care 3) and Sacristans. Our singers and musicians help lead our worship.

The pastoral, social and evangelical mission of St Mark's is supported by the PCC. We work together ecumenically throughout the year with Highcliffe Methodist and Holy Redeemer Catholic Church.

Up-to-date news, plans and information about us is available on our monthly newsletter, which is emailed to members, as well as on our website www.stmarkshighcliffe.org.uk. We live stream our 10am service which can be accessed on our Facebook page and via a link on our website. Our PCC and Breakfast @ 9 have WhatsApp groups.



Finances

Serving God, each other and the Community

We consider the Common Mission Fund request as a priority and have managed to donate the full amount for many years.

We encourage everyone to use the Parish Giving Scheme to give more regular receipts, and hold an annual stewardship/giving morning as well as other fundraising events. We distribute individual thank-you letters to donors for their giving in the previous tax year.

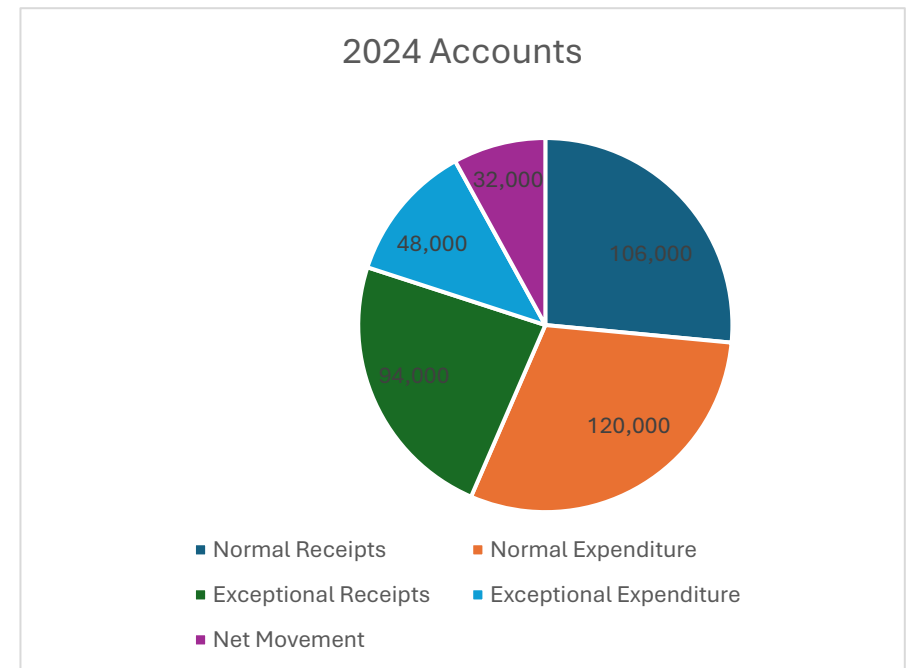
We are fortunate to be able to fund a part-time Parish Administrator, who deals with occasional service enquiries, management of hall bookings and all general public enquiries plus the day to day office tasks such as printing, ordering, handling deliveries etc.

Our Church Hall is hired to the community, with regular hirers such as Slimming World, Zumba and Highcliffe Charity Players, and private functions from birthday parties to wakes. This provides an additional income stream.

There is a smaller room (known as the Library) used by groups such as Workbox and Ladies Group.

We are a registered charity (1150249) and file Annual Reports and Accounts with the Charity Commission. These may also be found on our website.

<https://www.stmarkshighcliffe.org.uk/uploads/library/Children/St%20Marks%202024%20reports.pdf>



THE HOUSE

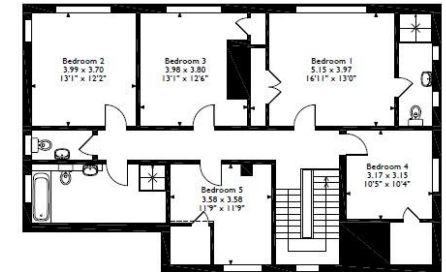
The property is a detached five-bedroom dwelling located in the town of Highcliffe-on-Sea. The property is situated in the centre of the town, within walking distance of St Mark's Church, Highcliffe School, and closely located to Highcliffe Beach. The town of Highcliffe boasts a variety of local amenities, with many shops, cafes, and restaurants closely located to the property. Highcliffe is a picturesque seaside town in Dorset with award-winning beaches, stunning views of the Isle of Wight, and a historic clifftop castle.

The property offers accommodation over two floors. The hall provides access to the study, snug, living room, dining room, and kitchen with the utility and downstairs toilet accessible from the kitchen. The first floor consists of four well-sized bedrooms, with one larger master bedroom accompanied by an en-suite with a further family bathroom and separate toilet off the landing. The property also benefits from a large garage and a fair-sized garden with mature borders and shrubs.

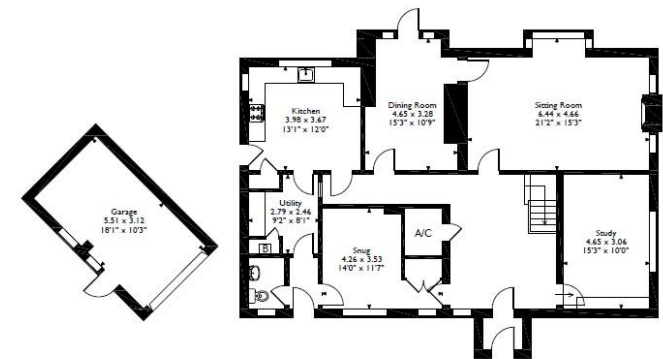
The property is visited on an annual basis to ensure it remains suitable for clergy occupation and is also part of a quinquennial inspection programme. This allows us to assess the longer term requirements of the property and schedule larger works. Day to day repairs can be reported either directly to one of the Savills team or via the Fixflo app, details of which are on the Diocese website. Annual servicing will be booked in during your occupation in order to ensure the property remains compliant from a health and safety perspective during your occupation. The property has been subject to minor works in recent years and some additional cosmetic redecoration is being carried out in advance of any future occupation.



33, Nea Road, Christchurch
Approximate Gross Internal Area
Main House = 244 Sq M/2617 Sq Ft
Garage = 17 Sq M/185 Sq Ft
Total = 261 Sq M/2799 Sq Ft



First Floor



Ground Floor

Please note that the location of doors, windows and other items are approximate and this floorplan is to be used for illustrative purposes only. Unauthorized reproduction is prohibited.

ROLE DESCRIPTION

The role description is a separate document and should always be read in conjunction with the [Guidelines for the Professional Conduct of the Clergy](#).

This post is a three year turnaround post to give the church more time to work on some of the challenges raised in the recent archdeacon's review. Interested candidates can request this from the Archdeacon.

HOW TO APPLY

A full application pack, along with Terms & Conditions, is available from the Diocesan website, [here](#).

For an informal conversation about vacancies in the Bournemouth Archdeaconry please contact:

The Ven Jean Burgess
Archdeacon of Bournemouth on 01962 710962
jean.burgess@winchester.anglican.org

Jane Hammond
Clergy Appointments Assistant 01962 737310
Clergy.appointments@winchester.anglican.org



The Ven Jean Burgess, Archdeacon of Bournemouth

Appendix

Other Charitable Activities we support:

- Eve's Project – a group at St Mark's making hygiene kits for girls in Kinkiizi
- Soup and Roll lunches – food prepared and hosted by a team between December - February
- Children's Society collection boxes
- Salvation Army – items made for Mary's Men Christmas appeal for homeless in the area
- Shoe boxes – Samaritan's Purse and Rotary
- DEC – voluntary contributions responding to needs
- Gift to visiting Priest supporting a mission trip to Myanmar



Other Activities

- Christmas Tree Festival held at Highcliffe Castle – we dressed a tree showing the various aspects of St Mark's work and ministry
- We gratefully host fundraising concerts given by Highcliffe Charity Players and Swing Unlimited and are thankful for their generosity
- We often have visitors to our churchyards to see Mr Selfridge's grave, Commonwealth War Graves and some Napoleonic graves
- St Mark's hosts speakers for evenings of talks on Environmental themes which attract members of church and the local community

Advertising our activities:

St Mark's website and Facebook page, FB also accessed via the website, Local Community website, Ecumenical Partners News, Next Door
Link to Open the Book article: <https://winchester.anglican.org/open-the-book-storytellers-help-school-children-in-highcliffe-hear-gods-word>

Link to website: www.stmarkshighcliffe.org.uk where also the link to our 10am service, which is live streamed, can be found.

Link to Eco Church/Green Fayre article: <https://winchester.anglican.org/st-marks-highcliffe-engages-with-local-community-through-creation-care-events/>

St Mark's Quiet Morning for Thy Kingdom Come on Saturday 7th June 2025 was covered in an article published on the Diocesan newsletter.

<https://winchester.anglican.org/celebrating-pentecost-and-ten-years-of-thy-kingdom-come/>

Statistics

- Our current Electoral Roll membership is 103.
- At the October count the average weekly attendance at our services, was calculated as 91 adults and 8 children, but this number significantly increases at festivals.
- The worshipping community figure is 113.
- Currently weekly overall attendance at all services is between 130 -150 adults and children.
- The B@9 service is growing with between 30 – 45 adults and children attending weekly.
- The monthly Taizé service regularly has 20 – 25 people attending.
- As well as our regular services, we enable our community to celebrate and thank God at the milestones of the journey through life. In 2024 we had 5 Baptisms, 2 Weddings and 26 funerals and burial of ashes supported by our vergers.

St Mark's Organisation during vacancy:

- PCC
- Standing
- Teams: led by members of the PCC, reporting to the PCC
 - Welcomers, Sides People
 - Worship Rotas, Chalice Assistants, Vergers
 - Pastoral Care
 - Children and Families

- Prayer
- Charitable Support
- Eco Church
- Health and Safety officer
- GDPR officer

We are developing our welcome team and training those supporting our worship.

Credits: Photograph of the Food Festival – Adam McVey



Christmas Tree Festival at the Castle

‘From his fullness we have all received, grace upon grace.’
John 1:16

Diocesan Office, Wolvesey, Winchester SO23 9ND

t: 01962 737310

w: www.winchester.anglican.org



@CofEWinchester



www.facebook.com/CofEWinchester