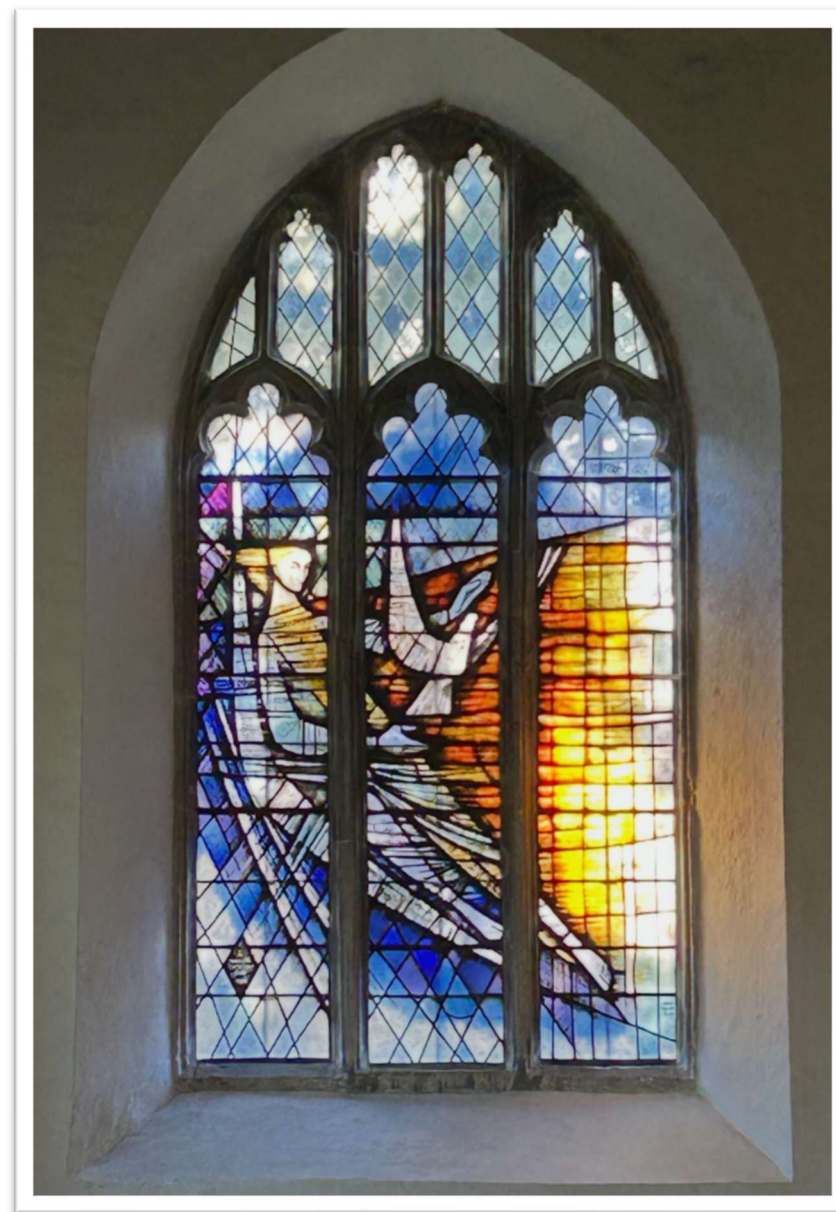


A Vicar for St Mary's Parish Church,  
Old Basing & Lychpit  
In the Deanery of Basingstoke



# Contents

<b>Welcome</b>	3
<b>Basingstoke Deanery</b>	4
<b>Introduction</b>	5
<b>Our Vision</b>	6
<b>Parish and Church Life - Our Church and Schools</b>	8
<b>Life at St Mary's</b>	9
<b>Linked Groups</b>	10
<b>Meet Key Members of the Team</b>	11
<b>The Church</b>	12
<b>Living Here</b>	14
<b>The Vicarage</b>	15
<b>APPENDICES</b>	
<b>1. Location Maps</b>	17
<b>2. Church Finances</b>	18
<b>3. Assets</b>	19
<b>4. Statistics</b>	19
<b>5. Regular Service Details</b>	20
<b>6. Useful Links</b>	21





# Welcome to Winchester Diocese

**Thank you for your interest in coming to minister here in this Diocese.**

We serve a whole range of diverse communities, from the historic city of Winchester with our glorious Cathedral, to the great port city of Southampton, the burgeoning boroughs of Basingstoke, Bournemouth, and Christchurch, thriving market towns such as Andover, Alton, Alresford and Romsey, and innumerable picture-perfect Hampshire villages. In all that there is much wealth – but there is also significant deprivation too, especially in our large urban conurbations where our churches are supporting some of the diocese's poorest communities.

In every context, we are committed to making the love and life of Jesus Christ known, through our churches, schools, and chaplaincies in a way that makes a tangible difference to those communities and their people. We do that through our common commitment to 'Walking the Wessex Way': in Winchester's past we find a rich heritage of serving, learning, growing and loving which inspires us for the future.

In many ways the Diocese of Winchester is in transition, as is the world around us. In parish ministry we seek people who are aware of the challenges that we face, but who are motivated above all by faith, hope and love in addressing them. We welcome those who are committed to help God's church to be the very best it can be, in the power of the Spirit, releasing all God's people into the mission and ministry to which they are called. And we recognise, too, our need to develop in diversity.

We are excited by the opportunities before us, and warmly invite applications from those who want to join us in addressing them.

With the assurance of my prayers as you seek God's best next step for you,

+ Philip





## The Basingstoke Deanery

St Mary's Church is part of the Basingstoke Deanery, one of the largest and most active deaneries in the Diocese of Winchester.

Basingstoke is ranked amongst the best places to live in the country. The major town of Basingstoke has a population of 115k and around it lies some of the most beautiful villages and countryside in Hampshire. The town is planning to continue increasing its population in the next 15 years. Employment is amongst the highest in the country. Different communities get on well together. Basingstoke & its environs is a good place to live.

The Deanery chapter is amongst the largest in the Diocese with 17 parishes and chaplains from the hospital and hospice. We are focussed on supporting our clergy and building cooperation between our parishes for the sake of mission. We have great ecumenical networks, and growing partnerships with other churches in mission.

We want enterprising clergy, who are team players, to join our chapter. We offer a rich depth of experienced leaders, great lay-leadership, ecumenical prayer networks and a generous and diverse spiritual life. We have challenging times ahead, but a strong willingness to support our clergy and their families in the demands of ministry.



**Revd Dr Ben Kautzer**  
Area Dean



**Dr Philip Hiorns**  
Lay Chair



## Introduction

The parish of **St Mary's, Old Basing and Lychpit**, lies at the heart of a thriving village community with deep historic roots. Once home to the great Tudor palace of Basing House, Old Basing and Lychpit retains a strong sense of identity whilst being just a mile from Basingstoke, with its excellent transport links. Here you'll find a parish that combines the warmth of village life with the opportunities of a modern town.



We are seeking a Vicar who will help us build on **strong Eucharistic foundations of worship, extending welcome, and community engagement**, guiding us as we grow in faith and spread God's love more widely. At St Mary's, inclusiveness is central to our vision. Our variety of worship creates space for people of every background and stage of faith to feel truly at home. Our commitment is to be a church where everyone is valued, encouraged to belong, and supported in discovering faith at their own pace.

Our **dedicated ministry and volunteer teams** sustain a wide range of activities, study groups, and social gatherings that nurture friendship, deepen faith, and strengthen community bonds. Rooted in a rich history yet looking ahead with hope, St Mary's seeks to be a place where faith is lived out through hospitality, compassion, and openness to all.



## Our Vision



### WELCOMING

The heart of St Mary's mission



### ENGAGING

with the wider community to bring worship beyond the confines of the building



### INSPIRING

Develop and share our faith in word and in practice



### SUSTAINING

Christian Faith and worship in the Parish and beyond. Caring for God's world.

**ONE PARISH**   **ONE CHURCH**   **ONE FAMILY**





## WELCOME

*Is at the heart of  
St Mary's mission.*

*We seek to be a place  
where faith is lived out  
through hospitality,  
compassion, and  
openness to all.*

Welcome Tearoom  
Ploughman's Lunch  
Men's Breakfast  
Local Schools  
Nursery Groups  
Youth Hub  
Church Network  
Parish Room Groups

**Our aspirations:**  
Beyond Christening/  
Wedding/  
Confirmation -  
extended welcome

## INSPIRING

*Make St Mary's  
more relevant to  
daily life through  
involvement in, and  
with, our wider  
community and  
explore innovative  
ways and times  
when people can  
be reached to take  
part in the Christian  
community.*

Pilgrims Group  
Living Word Group  
Visiting Clergy  
Inclusive to all  
Music

**Our aspirations:**  
Growing the Choir  
Engaging more  
effectively with young  
families

## ENGAGING

*We seek to reflect the  
hospitality of Christ in  
our worship, our  
welcome, and our  
community life.*

Church Festivals  
Historic focus tours  
AoW in schools  
Nativity Services  
Pet Service  
Foodbanks  
Ecumenical  
relationships  
Care Home visits  
'Gift of Time'

**Our aspirations:**  
Growing Youth Hub  
engagement working  
with local Methodist  
Chapel  
Reinvigorate Global  
Links

## SUSTAINING

*Develop further the  
pastoral care and  
outreach in our  
community.*

Home Visits  
Eco-Church  
PIOCC  
Parish Energy  
Scheme  
Parish Giving  
Scheme

**Our aspirations:**  
Uplift of the Church  
heating with  
environmental  
considered options for  
renewable and  
sustainable future

## Parish & Church Life - Our Church and Schools

The Parish of Old Basing and Lychpit is served by two excellent primary-phase schools:

- **Old Basing Infant School** – a County Maintained school (ages 4–7)
- **St Mary's Church of England (Voluntary Aided) Junior School** – (ages 7–11)

Together, they provide a seamless journey through the **Primary Key Stages** of the National Curriculum and are central to the life of our parish.

### A Long-Standing Partnership

Our relationship with **St Mary's CE Junior School** stretches back to the 19th century, when the original parish school was founded in the **Bolton Chapel** of St Mary's Church itself. That historic link continues to flourish today, grounded in shared Christian values, pastoral care and collective worship.

The **incumbent** serves as an **ex officio Foundation Governor**, alongside Foundation Governors nominated to the Diocese by the PCC. There is a strong and active partnership between church and school leadership.



### Worship and Spiritual Life

- The incumbent regularly leads an **Act of Worship** at the **Junior School**. The church also hosts **class-led worship**, **year-group services**, and **whole-school celebrations** each term.
- A special highlight is the **Year 6 Leavers Service**, hosted by the church each summer, giving pupils a space to reflect, pray, and prepare for their transition to secondary school.

At the **Infant School**, we enjoy a **warm and growing relationship** with staff and pupils and lead seasonal assemblies.

### Curriculum and Church Visits

St Mary's Church plays an active role in supporting the **RE and history curriculum** of both schools. Pupils from nursery, infant and junior classes visit the church throughout the year to:

- Explore Christian festivals and traditions
- Learn about the church's history and architecture
- Experience the church as a place of peace, wonder, and belonging

We greatly value the presence of children and young people in the church and look forward to deepening these vital partnerships.





## Life at St Mary's

### REMEMBRANCE



### ALL SOULS



### BLUE CHRISTMAS



### WEDDINGS



### BAPTISMS



### FUNERALS



### NATIVITY SERVICES



### OUTREACH COMMUNION – MONTHLY



### PET SERVICE



Linked Groups





## Meet Key Members of the Team

St Mary's Church is supported by a committed team of lay and ordained leaders who serve the parish in various roles.



**Assistant Curate: Rev'd Helen Holley** has worshipped at St Mary's for many years and was ordained in June 2024 bringing fresh enthusiasm and dedication to supporting the worship, pastoral care, and mission of the parish.

**Licensed Lay Minister: Colin Bezant** brings valuable experience in leading worship, preaching, and pastoral care. Together with Rev Helen, the churchwardens and the wider team, he helps sustain and enrich the ministry at St Mary's.



### **Administrator: Debbie Filer**

We are blessed with a dedicated and highly capable Parish Administrator, Debbie, who plays a vital role in the smooth running of our church life. As the first point of contact for many, Debbie provides a warm and welcoming presence, supporting families through key life events by liaising sensitively around weddings, baptisms, and funerals. She produces our weekly bulletin with care and clarity, ensuring everyone is informed and included. In addition, she assists the Treasurer with administrative tasks, acts as our Safeguarding Administrator to uphold the highest standards of care, and helps manage the practical needs of our churchyard and buildings. Her quiet efficiency and deep commitment provides essential behind-the-scenes support that enables the ministry and mission of the parish to flourish.



### **Churchwardens: Jeanette Edwards & Robert Jackson**

Together they work closely with the PCC and clergy to support the worship, pastoral care, and mission of the parish. They are providing continuity and encouragement during the vacancy and are dedicated to welcoming and supporting our new incumbent.

**Treasurer: Nicky Jackson** oversees the church's finances, ensuring that our resources are managed responsibly and transparently, supporting the mission and ministry of St Mary's



# The Church

St Mary's Church, Old Basing is a Grade I Listed building with a rich and fascinating history stretching back all but a thousand years.



## Historical Overview



Although a church has likely stood on this site since before the 11th century, the oldest surviving parts of the building are found in the crossing beneath the tower. The north and south crossing arches date from the early 12th century, but most of the visible structure today was built during the 16th century, when the church was significantly extended.

During the English Civil War, St Mary's suffered damage when it was used as stables by soldiers besieging the nearby royalist stronghold of Basing House. Following the Restoration, a successful national appeal funded the church's restoration to its former glory, ensuring that the fabric and spirit of the building endured.

## Maintenance and Support

The ongoing care of the church's fabric is supported by the Friends of St Mary's Church, a dedicated charity in its own right committed to preserving this historic building for future generations.



The most recent Quinquennial Inspection took place on 24<sup>th</sup> March 2022, leading to some drainage repair works, which have now been completed.

We have been awarded an Eco-Church Silver Award and are currently investigating sustainable heating systems for the church, and are looking to meet the Church of England's Net Zero commitment by 2030.





## Facilities

St Mary's offers a range of facilities that support its mission to serve the wider community:

- A Parish Room that seats approximately 60, with kitchen facilities, is used by local groups, study classes, and for private events.
- The Church is used by local groups, for example the Indian Orthodox Church for their monthly 'Divine Liturgy' Service, as well as being used by choirs for concerts etc.
- Two lavatories, one equipped with disabled access and nappy-changing facilities

## Churchyard

The churchyard surrounding St Mary's has been closed for burials for many years and for the interment of ashes due to limited space. However, these now take place in the newly opened cremated remains area within the old churchyard, which is maintained by the local council. Burials and some internments take place in the village cemetery, managed by the Parish Council.

A portion of the original churchyard has been set aside as a nature conservation area, and is lovingly cared for by PIOCC. The remaining churchyard is cared for by other parish volunteers.





# Living Here

## The Community of Old Basing & Lychpit in 2025

**Old Basing and Lychpit** is a parish that blends rural heritage with modern living. On the eastern edge of Basingstoke, the historic village of Old Basing sits alongside post-war housing, the 1970s–80s Lychpit development, and new estates still being built.

Today, the parish has around **3,500 homes** and a varied population of families, working adults, and older residents. A recently updated **Neighbourhood Plan** reflects strong local commitment to preserving character while meeting future needs.

## Local Facilities & Amenities

- GP surgery, dental clinic, and private healthcare.
- Community spaces including the Village Hall and Lychpit Hall.
- Local shops in Old Basing and Lychpit, including the well-loved **Street Bakeshops**.
- Basingstoke town centre nearby, offering extensive shopping, leisure, sports, and cultural venues.

## Education:

Church links with schools are central to parish life.

- **Old Basing Infant School** and **St Mary's CE (Aided) Junior School** within the village.
- Several secondary schools in Basingstoke.
- Post-16 education at **QMC** and **BCoT**.

## Transport & Connectivity

- Excellent road access via **Junction 6, M3**.
- Fast rail services from Basingstoke to **London Waterloo (50 mins)**, the gateway to the rest of the UK.

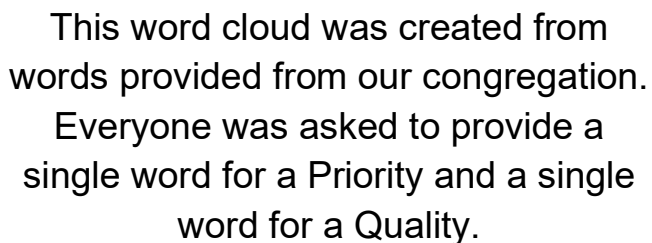


Despite being so well connected, **Old Basing and Lychpit retains its strong village identity and community spirit**, offering the best of both rural charm and urban opportunity.







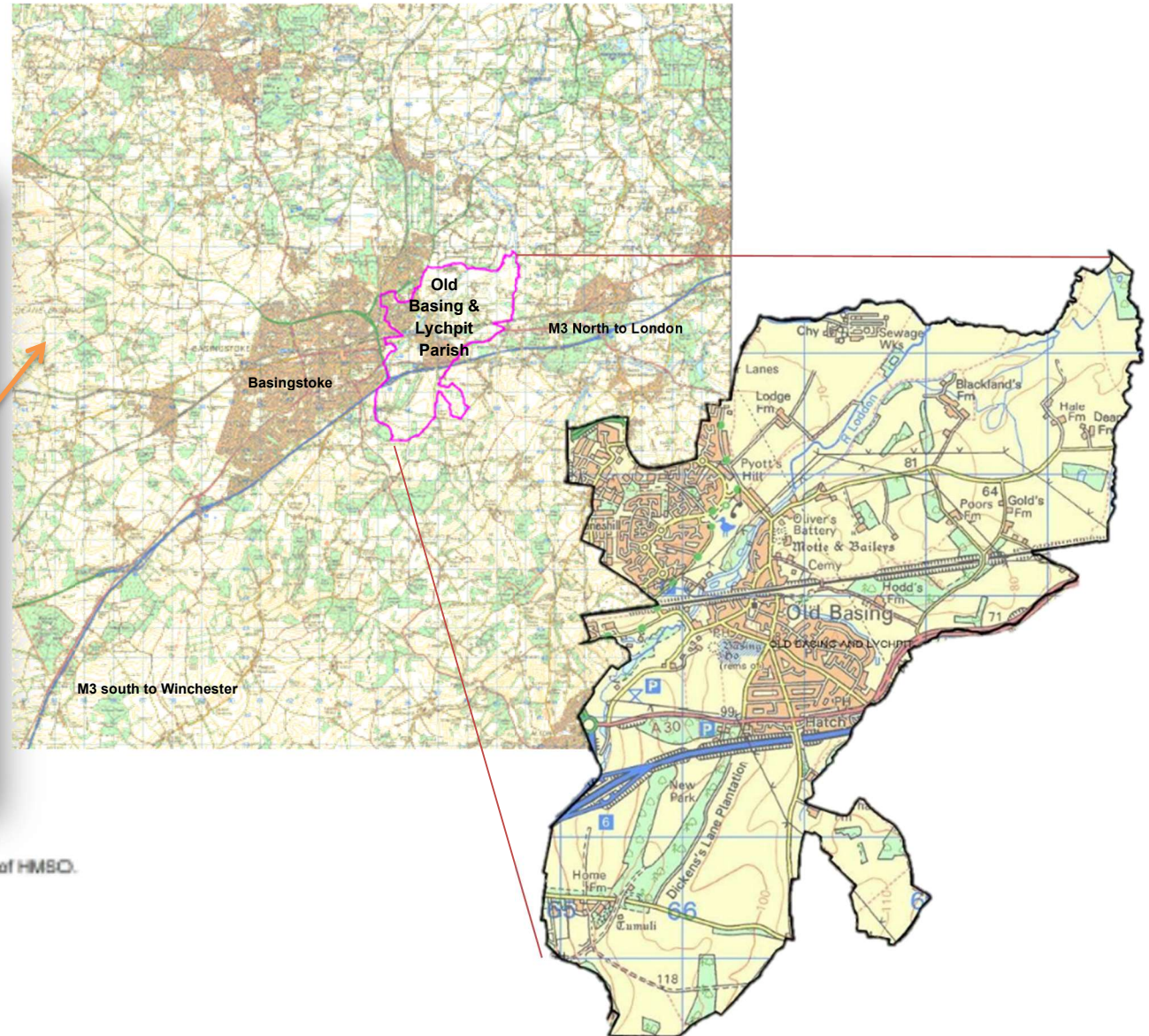




# Appendices

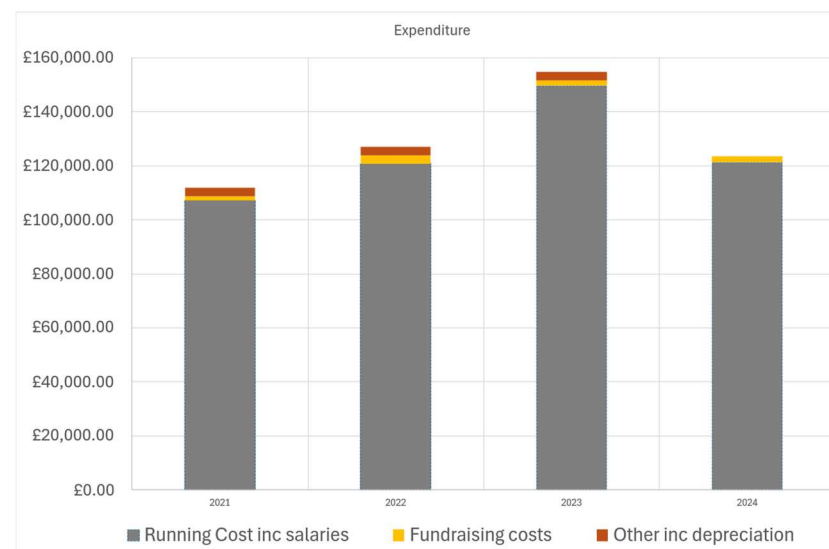
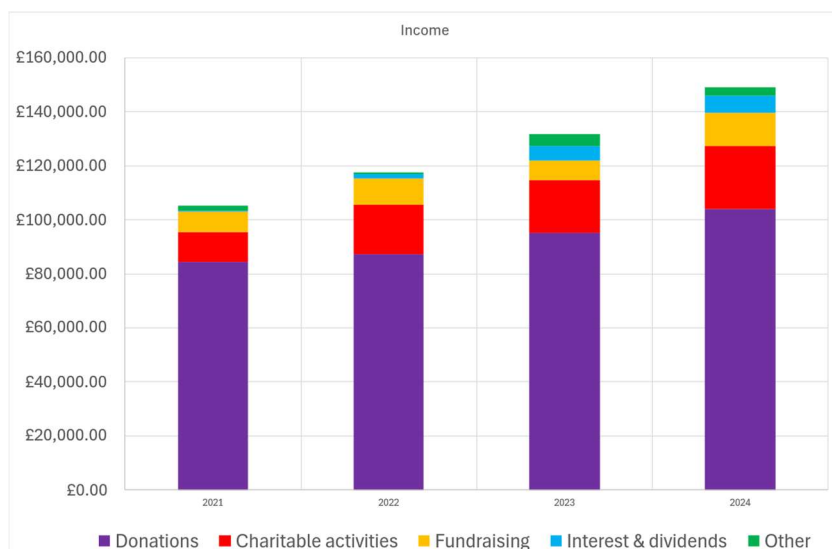
## 1. LOCATION MAPS

Old Basing and Lychpit parish lies to the east of Basingstoke in north-east Hampshire, England



Digital map from Dotted Eyes. Reproduced by permission of Ordnance Survey on behalf of HMSO.  
© Crown copyright and database right 2018.  
All rights reserved. Ordnance Survey licence number 100040148.

## 2. CHURCH FINANCES



The figures show the movement in all funds (restricted, designated and general). We have large sums in restricted funds that can be used to cover building works and significant projects of 'religious purpose' if necessary and are also able to call upon the Friends of St Mary's to support us with building and conservation work when required.



Following the Covid19 pandemic, like most churches, we saw a deficit in 2021 & 2022 due largely to both increased utilities costs and reduced donations.

The use of money from a restricted fund to cover the costs of re-opening an area of the churchyard for the internment of cremated remains led to the 2023 deficit.

In 2024 we saw a surplus following successful fundraising events, introducing more visible digital giving devices resulting in increased donations, and reduced utilities costs.

During 2025 our finances remain in a strong position. To the end of July, we had accrued a deficit (around £1400), as a result of several expenses in preparation for future projects (notably the installation of a sustainable heating system) that will be recouped through fundraising, grants etc. in due course.

We as a community strive to continue to pay our Parish Share to the Common Mission Fund, in full, whilst improving our finances going forward, balancing our budget, and continuing to grow in order to support our mission.



3. ASSETS

Total income in the year ending 31 December 2024 was £149,127.56.

Over the same period total expenditure was £123,612.71.

Our total funds as of 31 December 2024 were £212,482.37, represented by the following:

Total unrestricted funds	£107,906.97	51%
Total designated funds	£12,751.70	6%
Total restricted funds	£91,823.70	43%
Total funds	£212,482.37	100%

Full details of the accounts are available on the Charities Commission website for Charity 1136606.

4. STATISTICS

PARISH STATISTICS FOR 2024

Baptisms	20	Christmas Communicants	136
Marriages	3	Easter Communicants inc Vigil	122
Funerals (Total)	23	Average Attendance	
Church Service	18	- Sunday 8.00 am	18
Crematorium	15	- Sunday 9.30 am	45
Internment of ashes	11	- Wednesday 10.00 am	9

## 5. REGULAR SERVICE DETAILS



### **John 10:10 Love; Courage; Creativity**

We value our spiritual life and our worship is varied, centred on the Eucharist.

We have a robed choir to lead us in our hymn-singing and on special occasions and we are anxious to involve new and younger members in the choir. Music in Worship is important to us at St Mary's and we are very fortunate to have a splendid pipe organ

Volunteers from the congregation join residents in monthly services held:

- at Oakfields (sheltered accommodation) - inc Holy Communion
- and Basingfield Court (residential care)

### **Sunday**

8am Holy Communion

*A quiet early morning said service (Common Worship Order Two Traditional Language.).*

9.30am Parish Sung Eucharist (Common Worship Order One)

*A service of Holy Communion with Hymns, combining warm informality with solemn reverence. This service is live streamed.*

### **Wednesday**

10am Holy Communion (Common Worship Order One)

*This service is held once a term in St Mary's CE(VA) Junior School.*

### **Other**

8:45am Morning Offices are said publicly Monday, Thursday & Friday in the Bolton Chapel. Tuesday online.





## 6. USEFUL LINKS

St. Mary's Church Website: <https://stmarysoldbasing.org.uk/>

St Mary's Church of England (VA) Junior School: <https://www.st-marys-jun.hants.sch.uk/>

Old Basing Infant School: <https://www.oldbasinginfants.co.uk/>

Basinga Parish Magazine: <https://basinga.org.uk/wp/>

Charity Commission Website for Registered Charity 1136606: <https://www.gov.uk/government/organisations/charity-commission>

