

Vicar

The Bright Waters Benefice



Page	Title
3-4	<u>WELCOME</u>
5	<u>INTRODUCTION</u>
6	<u>BRIGHT WATERS AT A GLANCE</u>
7-8	<u>OUR TEAM</u>
9	<u>OUR VISION</u>
10	<u>OUR ORGANISATION</u>
11-12	<u>OUR CHURCH LIFE ACROSS THE BENEFICE</u>
13-21	<u>OUR CHURCHES</u>
22-23	<u>THE VICARAGE</u>
24	<u>PATTERN OF SERVICES</u>



.... And God said 'let there be light.'

Genesis 1:3

WELCOME

Thank you for your interest in coming to minister here in this Diocese.

We serve a whole range of diverse communities, from the historic city of Winchester with our glorious Cathedral, to the great port city of Southampton, the burgeoning boroughs of Basingstoke, Bournemouth, and Christchurch, thriving market towns such as Andover, Alton, Alresford and Romsey, and innumerable picture-perfect Hampshire villages. In all that there is much wealth – but there is also significant deprivation too, especially in our large urban conurbations where our churches are supporting some of the diocese's poorest communities.

In every context, we are committed to making the love and life of Jesus Christ known, through our churches, schools, and chaplaincies in a way that makes a tangible difference to those communities and their people. We do that through our common commitment to 'Walking the Wessex Way': in Winchester's past we find a rich heritage of serving, learning, growing and loving which inspires us for the future.

In many ways the Diocese of Winchester is in transition, as is the world around us. In parish ministry we seek people who are aware of the challenges that we face, but who are motivated above all by faith, hope and love in addressing them. We welcome those who are committed to help God's church to be the very best it can be, in the power of the Spirit, releasing all God's people into the mission and ministry to which they are called. And we recognise, too, our need to develop in diversity.



We are excited by the opportunities before us and warmly invite applications from those who want to join us in addressing them.

With the assurance of my prayers as you seek God's best next step for you,

+ Philip

As the Father sent me so I send you ... Receive the Spirit.'
John 20:21



WHITCHURCH DEANERY

Whitchurch Deanery is as beautiful as any other part of Hampshire, an area of rolling downland in the north together with the upper Test valley, bounded by the Berkshire border and the A303. Our 25 churches serve a population of some 25,000 many of whom take advantage of our excellent transport links to work in London or the large towns that surround us.

As a deanery we seek to enable our seven benefices to respond to the diocesan vision, and in particular we are developing our capacity to support each other and to engage with new forms of ministry.

Some of our benefices have been encouraged and strengthened by being part of the Growing Rural Parishes Programme run by the diocese. We have seen a steady increase in children and families attending church and have invested in administration and communications thanks to the GRPP.

Our clergy chapter offers encouragement to its members and the space for reflection on our shared ministry. A notable feature of the deanery is the dynamism and warmth of our links with the Diocese of Mityana in Uganda and many visits in each direction have been undertaken over recent years.



Revd James Russell
Area Dean and Rector of
the Overton Benefice



Revd Russell Smart
Assistant Area Dean and
Associate Priest of Bright
Waters Benefice



Peter Hull
Deanery Lay Chair



INTRODUCTION

The Bright Waters Benefice came into existence through parish reorganisation in 2022. It includes nine churches in a rural setting around the town of Whitchurch.

We are looking for a leader who will build on the early foundations of our new benefice, recognise and respect the distinctiveness of each church, and develop a stronger unified church family across our single benefice which brings growth and better serves each community.



Our vision is to see each of our churches thriving and growing as Christian families in their own local communities, reaching out with the Good News of Jesus in creative ways.

This post is a wonderful opportunity for someone to come and minister in this rural setting. We pray that as you read this profile you may begin to feel God's calling to lead and to share with us in the ministry in this outstandingly beautiful part of North Hampshire.

BRIGHT WATERS AT A GLANCE

Extensive ministry team including an



Associate Priest

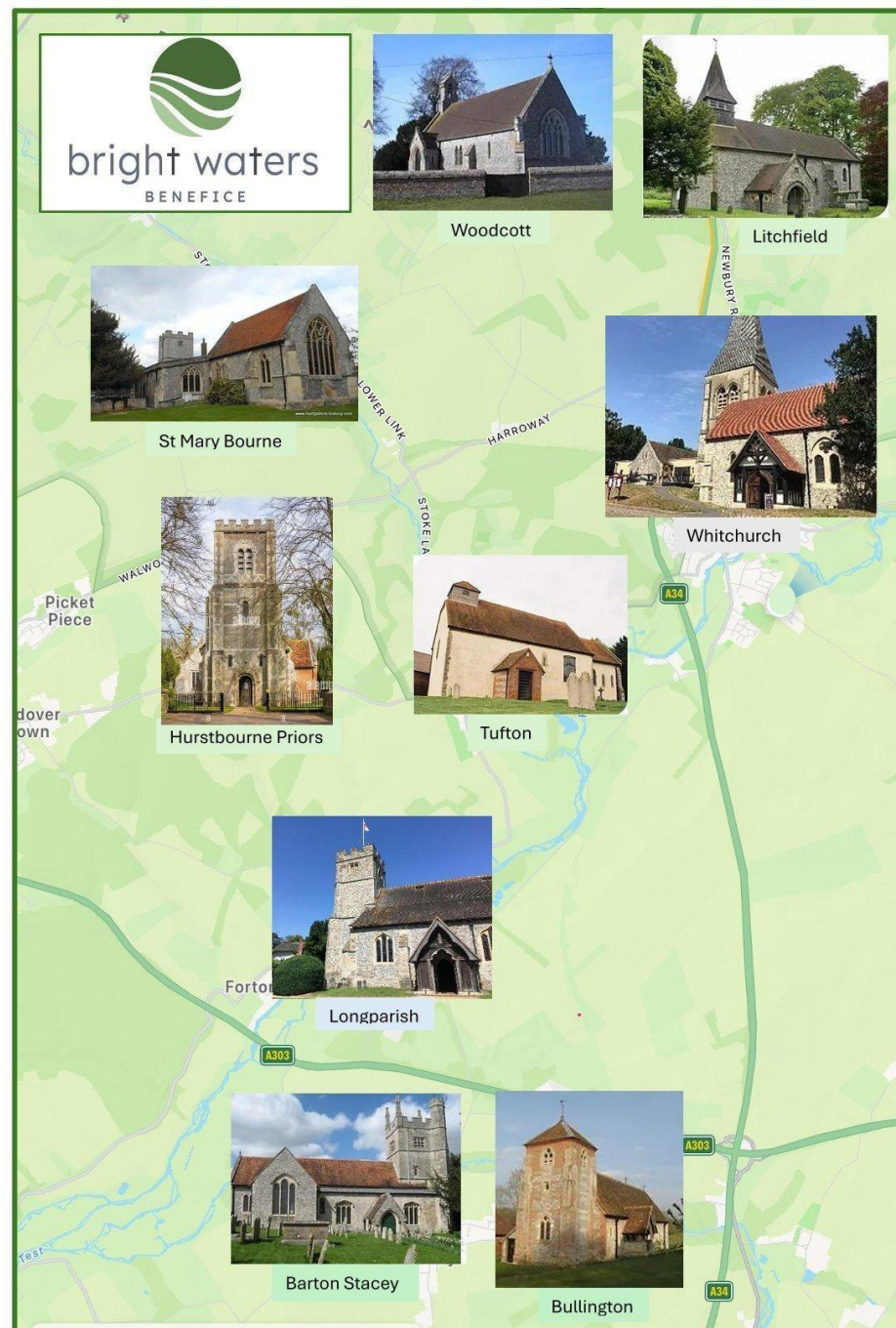
7 self-supporting clergy and

5 lay leaders

Active
Choirs and
Bell teams



Private,
detached
Vicarage in
town location with
good schools



Supportive,
flexible and
collaborative

PCCs



Seeking to
grow, learn,
serve and **love**
in the name of
Christ



2
excellent
benefice
administrators



OUR TEAM



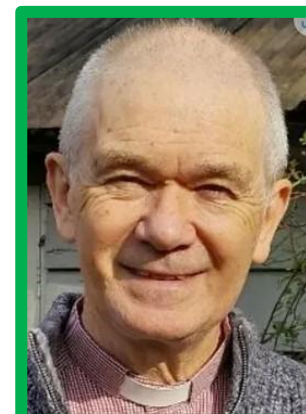
The Revd Russell Smart
Associate Priest
(full-time, stipendiary)



Rev Mark Christian
Part-time Assistant Priest



The Revd Canon Dodie Marsden
Assistant Priest (self-supporting)



The Revd Gordon Randall
Assistant Priest (self-supporting)



The Revd Nicky Smallwood
Assistant Priest (self-supporting)
Chaplain at Naomi House &
Jacksplace Hospices



The Revd Richard Sutcliffe
Assistant Priest (self-supporting)
Benefice Office Manager



The Revd Chris Theobald
Assistant Priest (self-supporting)



The Revd Georgi Thompson Leask
Assistant Priest (self-supporting)



Vicky Jennings
Benefice Administrator and
Safeguarding Administrator



Philip Geddes
Lay Minister exploring
ordination



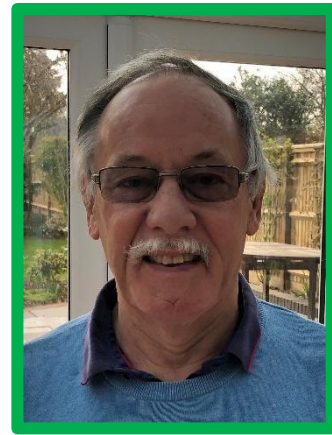
Carolyn Jay
Lay Minister



Andrew Ricketts
BCM Worship



Sarah Smart
Licensed Lay Worker



John Young
Bishop's Permission
to Preach

OUR VISION

Our vision is to see each of our churches thriving and growing as Christian families in their own local communities, as well as discovering the many ways in which we can be stronger together: sharing gifts and skills, learning from each other, and worshipping together. Over the last few years, we have begun to pray and work towards this vision with shared services, a new service rota, and flexible worship booklets.

Our new season of ministry across our communities will focus on:

- ✦ **Developing** a network to deliver excellent pastoral care.
- ✦ **Growing** churches spiritually and numerically by telling others about the good news of Jesus.
- ✦ **Encouraging** and releasing financial generosity to enable our vision.
- ✦ **Nurturing** our ministry to families, children and young people.
- ✦ **Building** on successful Lent and Advent courses to develop home groups and nurture faith, discipleship and service within our congregations.
- ✦ **Maintaining** traditional worship along with contemporary and creative forms of worship.

The new vicar will provide strategic leadership and valuable insights based on their experience and skills. The vicar will play a crucial role in supporting the development of our ministry across the generations. We are seeking someone who is passionate about creative ministry and capable of working with sensitivity and respect within both traditional and contemporary church settings. This role offers exciting opportunities in rural ministry as we work to reimagine sustainable ministry for the future, ensuring it is adaptable and relevant to our communities' needs.

We are a supportive and caring team committed to maintaining a healthy balance between ministry and sabbath, work and family, and it is expected that the vicar will take their day off each week, as well as their full annual leave entitlement, and an annual retreat.

We want to **grow, learn, love** and **serve** always pointing to **Jesus - The Way, The Truth and The Life.**



OUR ORGANISATION

The Associate Priest is a full-time, paid post. Rev Russell Smart currently has responsibility for four strategic areas of oversight to support the Vicar and Ministry Team: organising and leading short courses across the benefice; shaping ministry to children and families including term-time collective worship and being governor of two of the three CofE Primary schools; supporting the Benefice Safeguarding Officer; pioneering and reimagining fresh expressions of church in new activities and forms of worship.

Rev Mark Christian holds a part time, paid post with special responsibility for two of the rural churches, St James the Less, Litchfield, and St James the Great, Woodcott.

Governance



Our nine churches are organised into six parishes each with its own PCC with chairmanship shared between and clergy and laity. We have gifted churchwardens who are very supportive and encouraging of the ministry team.

Financially our churches are well resourced however some have struggled to pay the full CMF request. Of our nine churchyards, three are closed to burials although two of these still accept burials of ashes in their memorial gardens. The other six are still open.

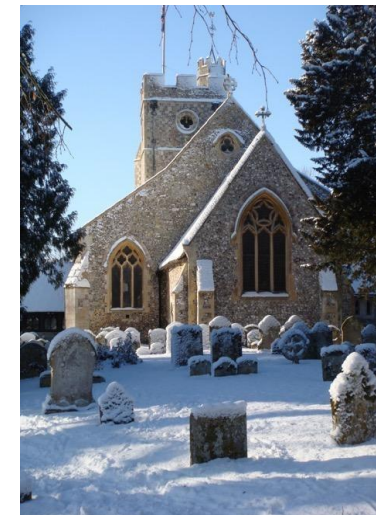
Administration and Communication



We have two excellent part-time benefice administrators in Revd Richard Sutcliffe and Vicky Jennings who oversee all the invoicing for occasional offices, diocesan returns, room booking for All Hallows, and routine benefice administration. Vicky is our Benefice Safeguarding Administrator who takes on responsibility for managing DBS checks for each parish and safeguarding training across the benefice.

The Benefice has input into three local parish magazines, Whitchurch, Hill & Valley, and West Dever News. These magazines are a primary way of communicating with and promoting church activity across our local villages and town, as well as supporting local businesses and all aspects of community life. Whitchurch parish magazine also generates income for the church through selling advertising space and subscriptions. Current and past editions are available on the website.

<https://allhallowswitchurch.org.uk/the-latest/parish-magazine/>
www.stmarybourne-pc.gov.uk/community/st-mary-bourne-parish-council-12760/hill--valley/
brightwatersbenefice.org.uk



OUR CHURCH LIFE ACROSS THE BENEFICE

Our churches are lively and vibrant communities with a great mix of people of all ages and backgrounds. Our congregations are well integrated within their local communities, eg hosting civic services such as remembrance and local concerts. We believe it is an essential part of each church's life and mission to be warm and welcoming, open and inclusive in serving our parishes and proclaiming the gospel.



Services

Each church is proud of, and inspired by, its own distinctive Christian heritage and tradition, thus we aim to serve a wide variety of worship traditions and preferences where possible. In leading services our clergy and LLMs are flexible in wearing robes depending on the style of service. We offer Zoom services for those unable to attend church in person. These have a regular, faithful online congregation.



Mission and Discipleship

We encourage our churches to be places of generous hospitality across the generations. We have previously led enquirers courses with follow up, and we are keen to continue this. We want to deepen the faith and knowledge of our regular congregations by continuing to run our popular Lent and Advent Courses. We have had successful men's and women's retreats. We offer visits and services across the year to two care homes in Whitchurch as well as visits to residential care homes in the surrounding area.





Children and Young People

We have good relationships with all our local primary schools. There is a desire to both support and reinvigorate existing children's work in our churches and to explore new opportunities especially in relation to our three C of E primary schools (Whitchurch, Longparish and Barton Stacey) where we have strong links already. The vicar will be a governor at Whitchurch Primary School, while the Associate Priest remains a governor at Longparish, Barton Stacey, and Micheldever primary schools. The well-established youth group (YOG) based at All Hallows is open to teenagers from across the benefice. The group meet fortnightly and lead services once a term.



Social

Our churches host social events across the Benefice providing a great opportunity to build relationships, invite friends and share in fellowship and care. With all the legal responsibilities, hard work and due diligence that comes with leading our benefice, we are keen that our PCCs and ministry team also place priority on fun and fellowship within the church family; finding opportunities to gather to eat and celebrate who we are and what God is doing amongst us.



Mityana The link between Whitchurch Deanery and Mityana Diocese in Uganda began in the late 1970s, primarily led by Revd Canon Dodie Marsden. Since 2005 over 150 young people and various groups of adults from the Deanery have visited Mityana, and many teachers, students, priests and bishops from Mityana have visited us. Since 2007 all the deanery primary schools have been linked with primary schools in Mityana, and Testbourne Secondary School with Mityana Secondary.



I was glad when they said to me, 'Let us go to the house of the Lord'

Psalm 122:1



THE NINE CHURCHES OF BRIGHT WATERS BENEFICE (IN ALPHABETICAL ORDER OF LOCATION)

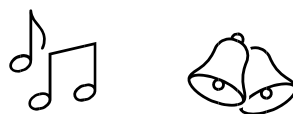
All Saints, Barton Stacey



The Church of All Saints stands on one of the oldest continuous sites of Christian worship in England and is the spiritual hub of the thriving village community.

Barton Stacey has a good number of families with young children and is one of the churches where there is an excellent opportunity to develop the children's and family's ministry.

The village chamber choir sings at special occasions and there is a committed team of bellringers and flower arrangers. The churchyard is closed to burials although there is a memorial garden for the burial of ashes.



The church has strong links with the wider community and school, with an ongoing military connection which makes the marking of civic and national events very important. The church is strongly encouraged to be part of village life. All Saints, our church school, and fantastic community stand at the heart of this diverse, warm, welcoming and loving village. We look forward to meeting our new vicar who has a vision to help grow church attendance, and in particular young people, to help our church thrive. We hope the new vicar will lead our community into a Christ centred future to fulfil God's purpose, and for our church to become a trusted and central hub of prayer and hope for families as it has been in the past.



St Michael and All Angels, Bullington



A small, but faithful, congregation worship at St Michael and All Angels, a picturesque church, with a rich history, located on the south bank of the River Dever in Bullington. The Grade II* listed church occupies an idyllic setting, which has changed little for a thousand years. Originally assigned to Wherwell Abbey in the 11th Century, it was given its independence in the 19th Century but is now a chapel-at-ease to All Saints, Barton Stacey, within the Bright Waters Benefice.



The peaceful backdrop, with its closeness to nature makes St Michael's a popular location for weddings, baptisms and funerals. The congregation that is drawn from the rural community enjoys a traditional, Book of Common Prayer service on the first and third Sundays of the month. We are committed to providing a respectful and safe environment for everyone and a warm welcome to newcomers.

The main event of the year is the fete, held in the churchyard during the afternoon of the second Sunday in September. This is incorporated within England's largest festival of history and culture, *Heritage Open Days* and is a day when the normal tranquillity of the Dever is replaced with inspiring energy and community spirit.



St Andrew's, Hurstbourne Priors



Hurstbourne Priors is a small, picturesque village with a beautiful church first consecrated in 902AD. The community is close knit and gathers for social events such as the annual Safari Supper and generates a huge effort for the extraordinary May Fair to raise funds for the Church, Village Hall and Recreation Ground. The PCC is committed to welcoming as many as possible to worship at St Andrews and offers a wide range of services and other events designed to appeal to both committed worshippers and those exploring faith.



Attendance is high at the Christmas, Easter and Remembrance services with a smaller number of regular churchgoers throughout the year. In recent years there has been an influx of young families and family services have been introduced at their request.



The PCC is made up of a variety of people from the village and three members have young families. A good number of baptisms, weddings and blessings are held each year. Locals enjoy the well maintained and peaceful churchyard which is still open for burials. Villagers run a Lent Course and a regular Bible study course.

With generous contributions from Planned Giving, the PCC has paid the full CMF for many years and, having been blessed with a bequest from a villager, should have sufficient funds to maintain St Andrew's Church in a reasonable state of repair.

We hope the new Vicar will help us reach out to two areas of the village which are less connected to the community and the church.



St James the Less, Litchfield

St James the Less is set in the hamlet of Litchfield which comprises 30 houses and about 70 people within Litchfield Down Farm, some four miles north of Whitchurch. There has been a church on this site since the 12th Century. Parts of the present church are Norman, Transitional, 16th Century with restoration in 1874. The wooden screen is dated 1655 and the north aisle and the south porch were added in 1875. The lychgate was built in 1962. There was a time when the A34 ran through the village and past the church. Now, however, the church is in a peaceful cul-de-sac.



St James the Less has a single manual organ and two bells which are still used.

Sunday attendances are around 20 people with larger congregations for festivals. Services for Harvest, Mothering Sunday, Remembrance, Good Friday reflection Service and Easter Day, a pet service, Crib/Christingle, Midnight Mass and Christmas Day Services are well attended.

There is a charitable trust which largely covers the cost of repairs, and the fabric is in good condition. The church has an open churchyard with about 5 funerals a year with a few internments. The average number of weddings is 3 per annum with the same number of baptisms.

Provision for worship is from the Book of Common Prayer and Hymns Ancient & Modern New Standard. Holy Communion is on the first Sunday of the month, Matins on the third Sunday, and Choral Evensong when there is a fifth Sunday. The Church is a member of the Prayer Book Society.



St Nicholas, Longparish

St. Nicholas Parish Church enjoys a beautiful setting and is situated on the 'Test Way'. Christians have been meeting and worshipping here since the early 13th century. It is well maintained through programmes of work following each quinquennial inspection and report. The churchyard has been closed to burials since the turn of the 20th Century, so burials are now made at the nearby Longparish cemetery. However, a few years ago, we opened a memorial garden in the churchyard for burial of ashes beneath a commemorative plaque. The church is open daily for visitors and for prayer.



The relationship between church and village is strong and the annual Church and Village Fete draws villagers together in a most wonderful way. Although attendance at the regular services is around 15 to 20 people, a significant number of villagers attend the church at some time during the year, none more so than at the major festivals of Christmas, Easter, Harvest, and Remembrance Sunday which, both as a church and village, we do very well.



The link between the church and the school has become stronger in recent years and goes from strength to strength. On the back of this relationship, we launched a new-style family service just over a year ago; this is a monthly 'fresh expression' informal service, specifically geared to the growing number of families with young children in Longparish, and also attracts families from other villages, whose children attend Longparish School. On average we see around 40 adults and 30 children, and growing, at each service. The village choir plays an important part in the musical activities of both church and village with regular concerts and by helping to lead the worship, singing at all the major festivals.



There are two flourishing pubs in the village, one of which was recently acquired, renovated and re-opened by the community, a refurbished village hall, a C of E aided primary school, and a village shop and post office. Longparish (C of E) School has an excellent reputation and attracts a significant number of pupils from outside the villages, as well as serving Hurstbourne Priors. State secondary education is available in Whitchurch, Stockbridge, Andover and Winchester.

We would like the vicar to build us to be a loving family church with an outward looking, mission led congregation.



St Peter's, St Mary Bourne

St Peter's is situated on the main road through the village. It is a Grade 1 listed 12th – 14th Century building of stone, flint and brick with some unique features. It holds a range of weekly services which have a small but faithful attendance.

The major celebrations throughout the year are very well attended, the church being full to overflowing. However, we are very much aware that we do need to attract more people to our regular services. We are constantly trying to improve our image especially for young families, endeavouring to offer a friendly, welcoming atmosphere and appropriate services.

Midweek Communion has a small, but faithful congregation and each of the other services has its own regular attendees. Home Communion is administered where there is a request as are home and hospital visits. Our growing family services are coordinated by one of our SSM

Assistant Priests. There is also a strong bell ringing team which rings every Sunday before morning services and for weddings.



St Mary Bourne is situated in the beautiful Conservation Area of the Bourne Valley and consists of two substantial communities, St Mary Bourne and Stoke, together with several other hamlets and outlying farms. These are all essentially rural. The Parish has a lively community with several active clubs and societies. There are two well supported public houses, a thriving community owned shop and café, and there is an excellent Village Hall which is in great demand for functions, a recreation ground and various play areas. We are fortunate to have a Doctor's Surgery with its own dispensary. Our popular County Primary School, although not a church school, has a long-established relationship with St Peter's.

Most notable events, amongst others are the summer cricket, bowling club matches, the monthly lunch, the annual Fete and Flower Show, and the recently introduced Bourne Fest.



St Mary's, Tufton

St Mary's Church is a Grade I listed building, a small, simple church dating back in parts to the 13th century. It is situated on a rise by the beautiful River Test in the centre of the village of Tufton which comprises about eighteen households.

Inside the church there is a painting, on the north wall, of St Christopher holding Jesus. There are also some remnants of other old paintwork above the chancel arch. The church has recently undergone significant restoration and redecoration internally.



Two services of Holy Communion are held each month; there is a faithful, regular congregation averaging fifteen. Everyone who comes into the church comments on the peaceful atmosphere within; the church is open for visitors at all times. The well-kept churchyard is a peaceful place to come and sit quietly to reflect.

Occasional funerals take place with very occasional baptisms and weddings.



All Hallows, Whitchurch



All Hallows is located at the edge of the town but provides a constant reminder of God's presence and welcome by the ringing of the bells and the open door. There is a regular Sunday school and an all-age service each month. Forest Church occasionally gathers in the Millennium Meadow and a well-established youth group meets fortnightly. Advent and Lent, and more regular bible study and prayer groups provide a focus for deepening relationships and growing faith. On Friday mornings a group meets to pray for the community, and a service of contemplative prayer is held monthly.



Each school holiday a community café provides drinks, food, games and craft activities for all ages. Chatter Café takes place monthly in a local pub, providing support and friendship for older members of the community. Other outreach and fundraising events include the charity shop and the annual church and primary school fete. The church supports three charities financially and in prayer. The church foyer is a Foodbank collection point.



The housing developments planned for Whitchurch are not large scale, but they will grow the town from its current population. Like most churches, our building is fullest at Remembrance, Christmas and Easter. All Hallows is blessed with an excellent choirmaster, a loyal choir affiliated to the RSCM, a talented organist, assistant organists, and a contemporary worship band from time to time. The bellringers ring every Sunday as well as for weddings, funerals and special occasions. We hope the new vicar will help us to share the light of Christ throughout our community. We would like to:

- see more people moving from occasional attendance to deeper faith and regular worship
- increase the use of the church building and hall to host small groups and bible studies, outreach activities and community events
- improve our communication through social media



St James, Woodcott

St James Woodcott is a simple, rural, and much-loved church located in the parish of Upper Woodcott. Records indicate that there has been a church on the site since 1297 and according to local archives it has enjoyed the oversight of over 50 Clergy until the present day.

The current church was built in the 1850's using materials from the previous church which was erected in 1704. It can accommodate a congregation of eighty people, and we see this tested at Christmas, Easter, Remembrance Sunday and of course weddings, baptisms, funerals and concerts.

Surrounding the church is a lovely graveyard with the traditional yew trees and a view over the agricultural fields beyond.



All routine care (cleaning, grass cutting, flowers) of the church is voluntary and funds for the common mission fund are raised through our twice monthly service collections, various community initiatives and through the Parish Giving scheme. That said, funding, particularly for the upkeep of the fabric of the church, is an enduring challenge.

St James is attended by a faithful community of regular worshippers twice per month at a 9am service.

Our community is very close, and our church provides a focus for that.

The church is kept unlocked at all times, ready to welcome both itinerant churchgoers, cyclists or walkers in need of rest and reflection.

St. James's is special for its simplicity and remoteness and much loved by its congregation.

Church Online

During the Pandemic, we learned how powerful and convenient Zoom can be for those who find it difficult to get to church. We have continued our Zoom services, run by one of our SSM priests and now offer half an hour of online worship for three out of four Sundays in the month. There is a faithful community of regular participants who enjoy the opportunity to gather in this way. Others occasionally join when sickness prevents them getting to church. We have even had people dial in from overseas holidays - including from a cruise off the China coast!

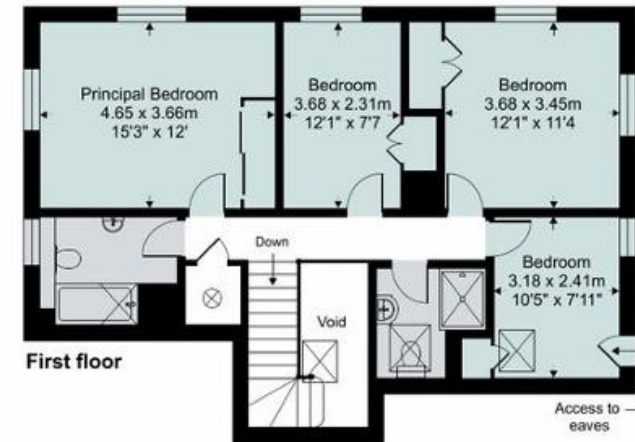




THE VICARAGE



The vicarage is spacious and presented in good order. It is located opposite All Hallows Church in Whitchurch, next to the town's cricket field. It is approached through a wooded drive and has a rural outlook across fields to the River Test beyond. The diocese is responsible for upkeep of the house and for payment of council tax and water rates. With the A34 and A303 nearby, mainline railway stations are available at Whitchurch, Andover, Basingstoke and Winchester. It is an ideal location for easy access all over the country.

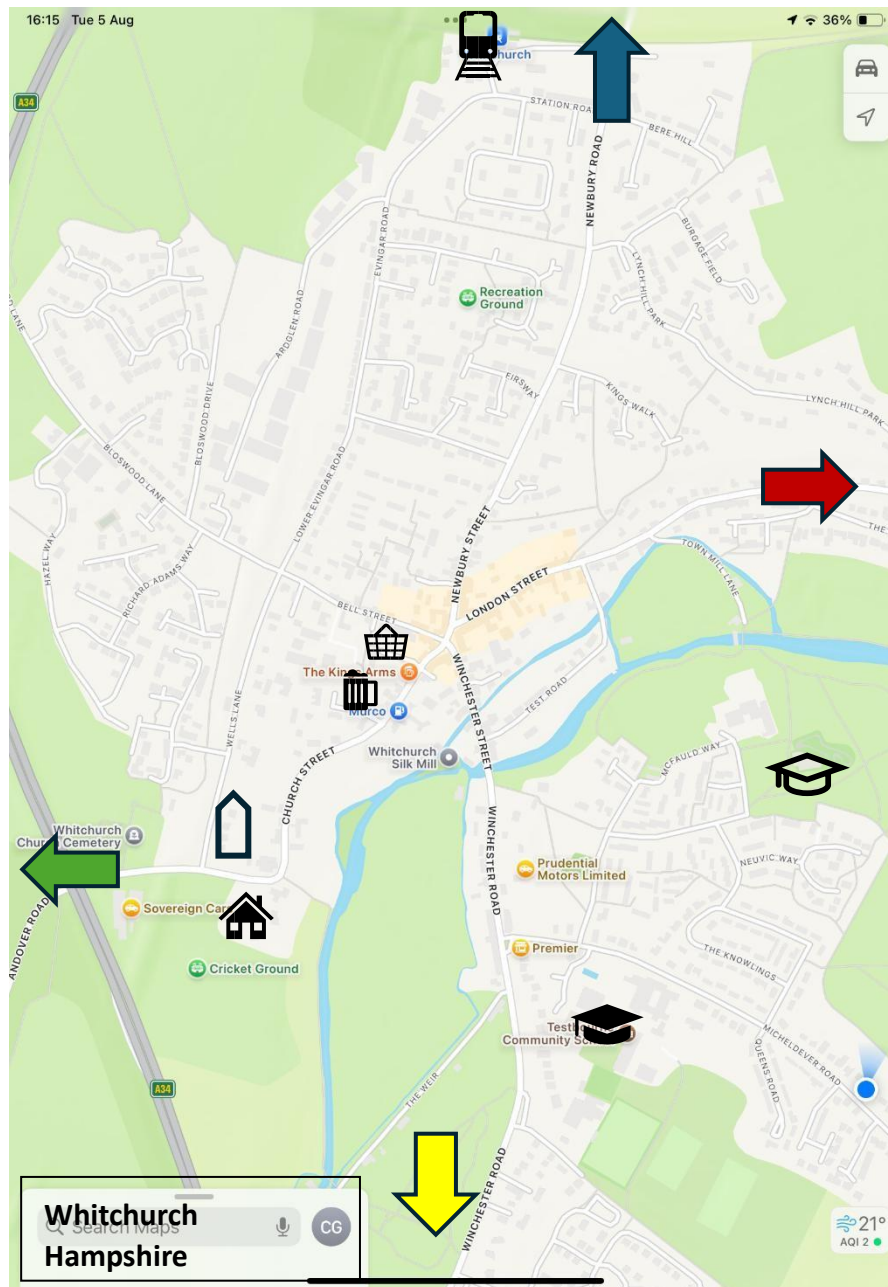


WHITCHURCH TOWN



Andover 8 mins

Basingstoke 13 mins



Driving Distances



PATTERN OF SERVICES

2026 January - Bright Waters Worship Rota VERSION 2

	04 Jan Epiphany Sunday	07 Jan Wednesday	11 Jan Baptism of Christ	18 Jan Epiphany 2	21 Jan Wednesday	25 Jan Epiphany 3
First Reading	Isaiah 60:1-6	9:30am Holy Communion	Isaiah 42:1-9	1 Corinthians 1:1-9	9:30am Holy Communion	Isaiah 9:1-4
Gospel Reading	Matthew 2:1-12	St Peter's Church	Matthew 3:13-17	John 1:29-42	All Hallows Church	Matthew 4:12-23
All Hallows WCH	10:30 Holy Communion	St Mary Bourne	10:30 All Age Service	10:30 Holy Communion	Whitchurch	10:30 Holy Communion
Service Leader	Revd Chris	Revd Chris	Revd Russ & Sarah	Revd Nicky	Revd Chris	Churches Together
Sermon	LLM Philip			LLM Carolyn		Revd Russ + Others
St Andrews HBP	10.30am Holy Communion			9am Holy Communion		10:30 Family Service
Service Leader	Revd Nicky			Revd Georgi		Revd Chris
Sermon						
All Saints BS	10:30 Family Service		10:30 Holy Communion	10:30 Holy Communion		10:30 Holy Communion
Service Leader	Revd Russ		Revd Nicky	Revd Chris		Revd Nicky
Sermon			LLM Philip			
St James Woodcott	9am Holy Communion			9am Matins		
Service Leader	Revd Mark			Revd Mark		
St James the Less LF	10:30 Holy Communion			10:30am Matins		
Service Leader	Revd Mark			Revd Mark		
St Mary's Tufton			9am Holy Communion			9am Holy Communion
Service Leader			Revd Nicky			Revd Russ
Sermon			LLM Philip			BPP John Y
St Michael's BTN	9:30 Holy Communion			9:30am Matins		
Service Leader	Revd Georgi			BCM Andrew		
St Nicholas LP	10:30 Holy Communion		10:30 Holy Communion	10:30 Family Service		10:30 Holy Communion
Service Leader	Revd Terry		Revd Georgi	Revd Russ & Gill		Revd Terry
Sermon						
St Peters SMB	10:30 Family Service		10:30 Holy Communion	10:30 Holy Communion		10:30 Holy Communion
Service Leader	Canon Dodie		Revd Chris	Revd Georgi		Revd Georgi
Sermon						
Benefice Evensong	5pm All Hallows		Benefice Evensong			Benefice Evensong
Service Leader	Contemplative Prayer		6pm St Andrew's HBP			6pm St Peter's SMB
1st Reading	Julian - Christian Meditation		Revd Chris			BCM Andrew
2nd Reading	Andrew & Alison Ricketts					
Zoom Live	Winchester Cathedral Online		10.30am Revd Richard	10:30am Revd Richard		10:30am Revd Richard
NOTES:						

'From his fullness we have all received, grace upon grace.'
John 1:16

Diocesan Office, Old Alresford Place, Old Alresford, SO24 9DH 01962

01962 737310

www.winchester.anglican.org



@CofEWinchester



www.facebook.com/CofEWinchester